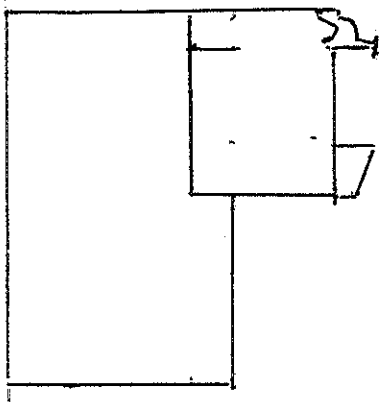


Samantha Glaysher
Red House
Thorpe lane
Fylingthorpe
Whitby
North Yorkshire
YO22 4TH

Please find enclosed plans for windows to be installed in new extension at St
Stephen's Church Rooms, Thorpe Lane, Robin Hoods Bay application No.
NYM/2012/0124/FL.

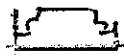
NYMNPA
31 AUG 2012
WS



JAMB 100mm x 60mm

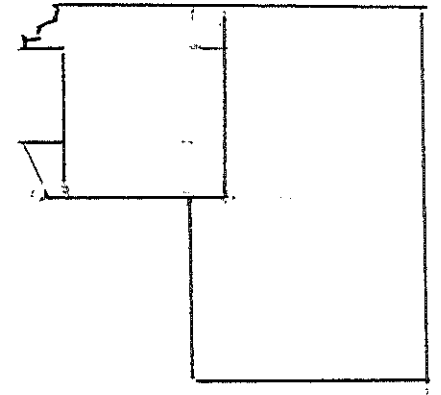
SASH RAIL

50mm x 50mm



GLAZING BEAD
25mm x 14mm

31 AUG 2012
 RIPA



JAMB
100mm x 60mm

SASH RAIL
50mm x 50mm

HEAD 100mm x 60mm

OPEN

SASH TOP RAIL 50mm x 50mm

GLAZING BEAD 25mm x 14mm

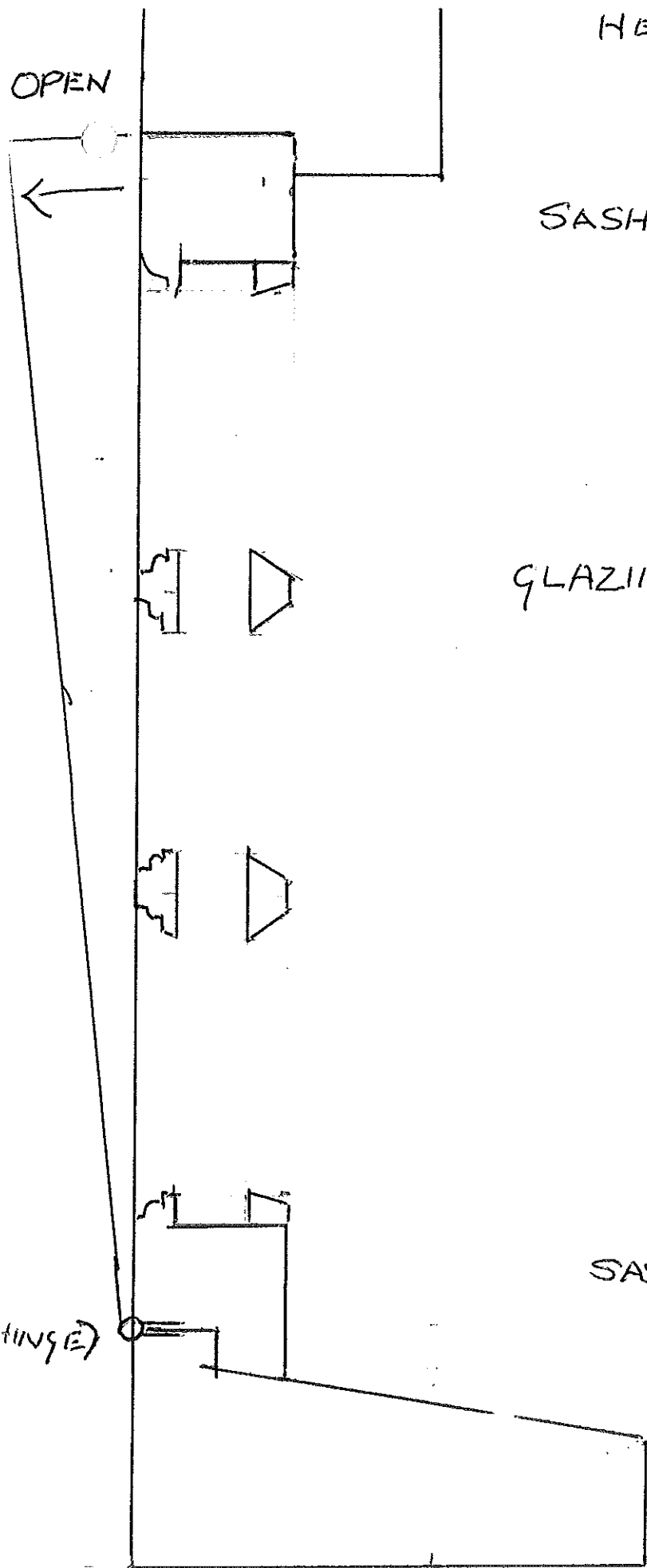
NYMNPA

31 AUG 2012

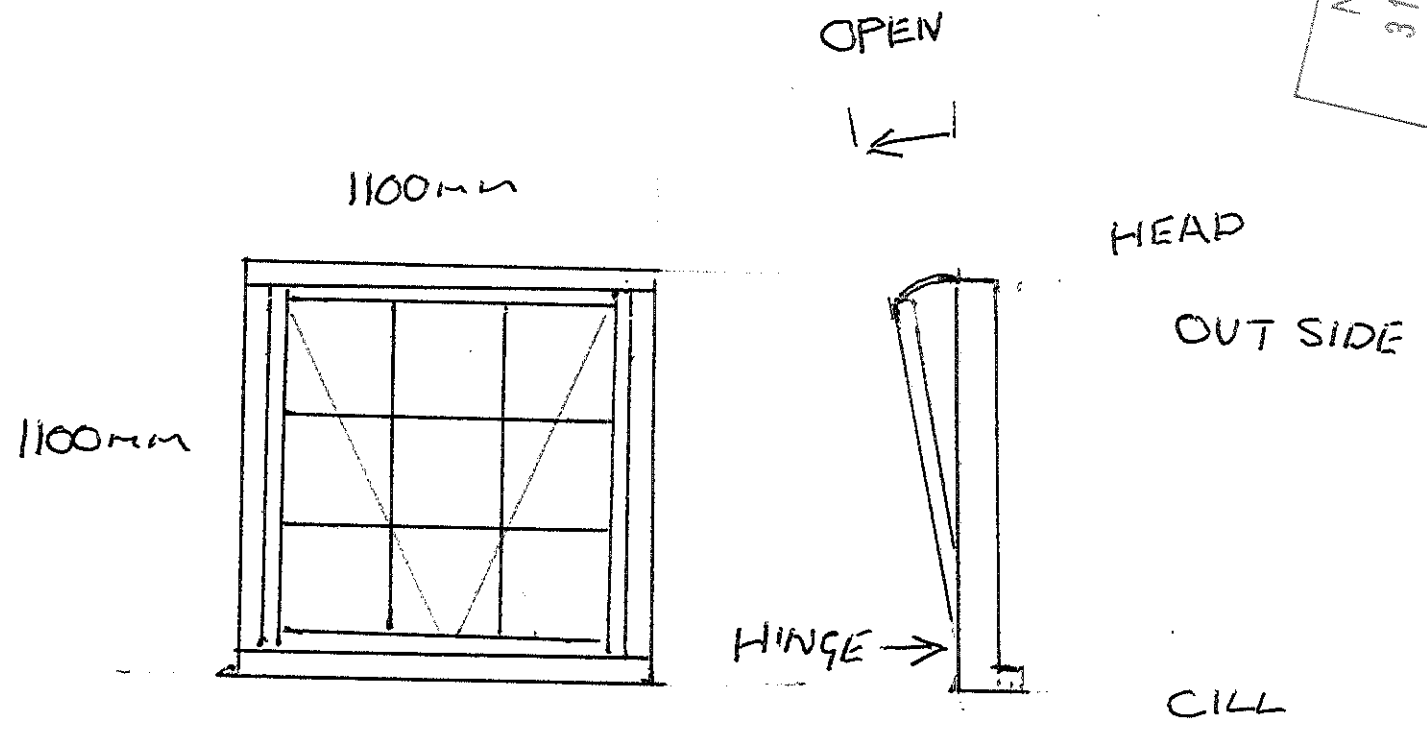
SASH BOT RAIL 50mm x 60mm

CILL 150mm x 80mm

HINGE



NYMNPFA
31 AUG 2012



SCALE 1:20