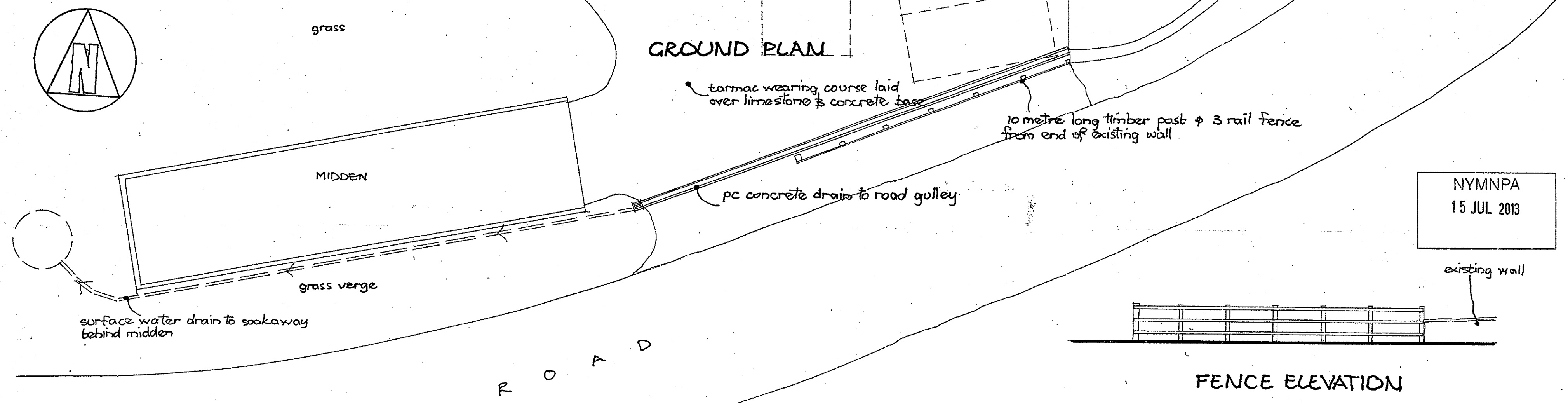
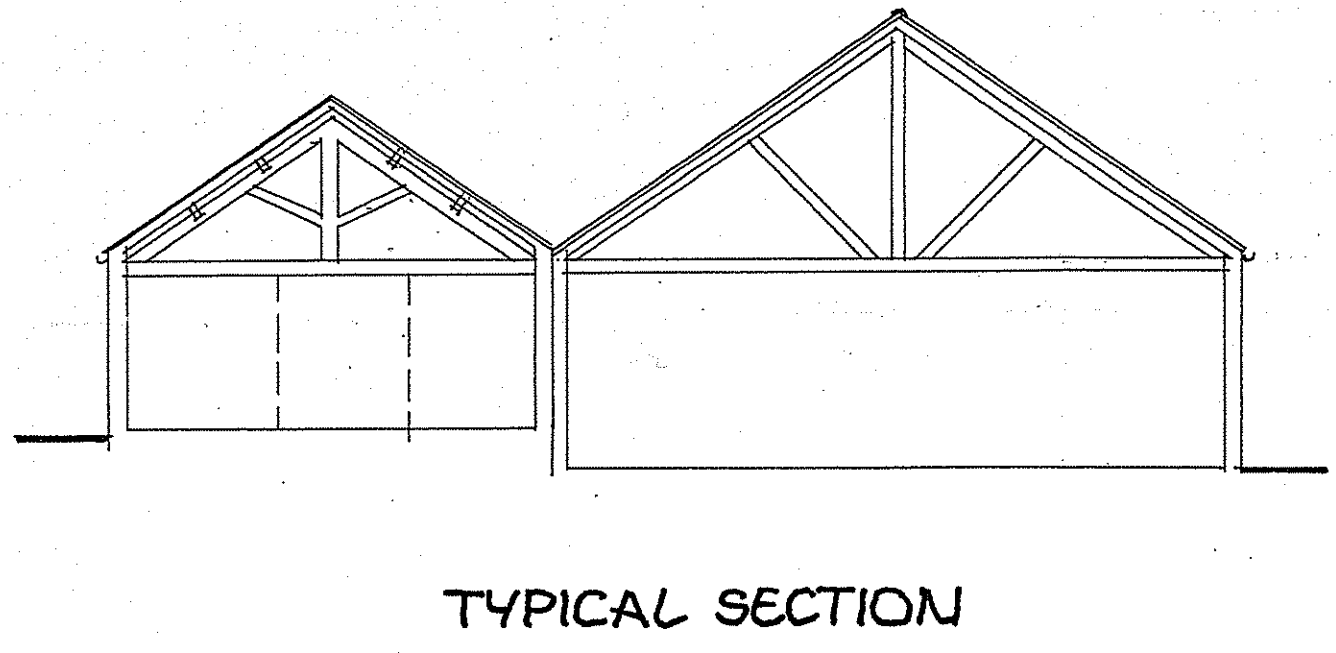
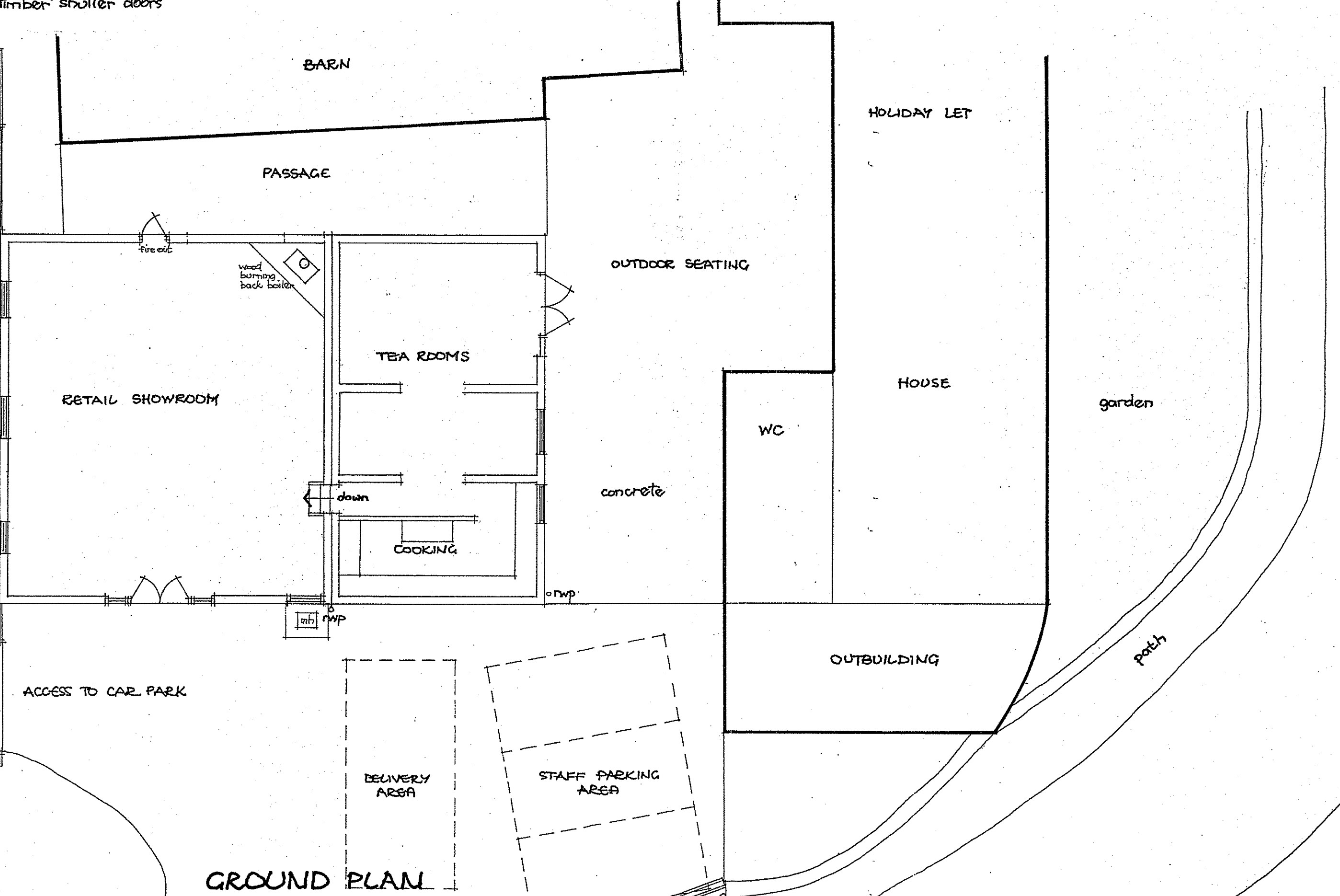
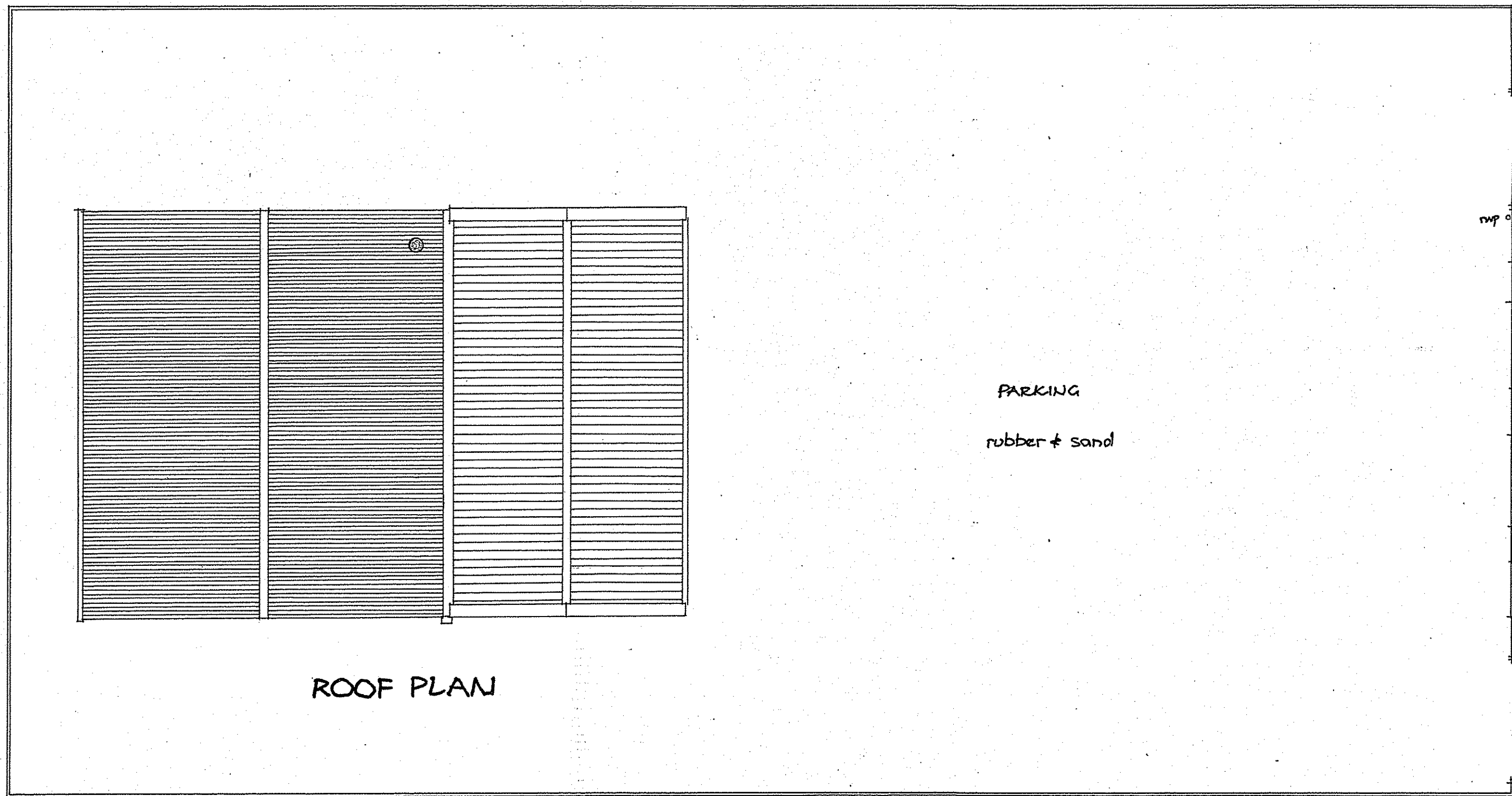
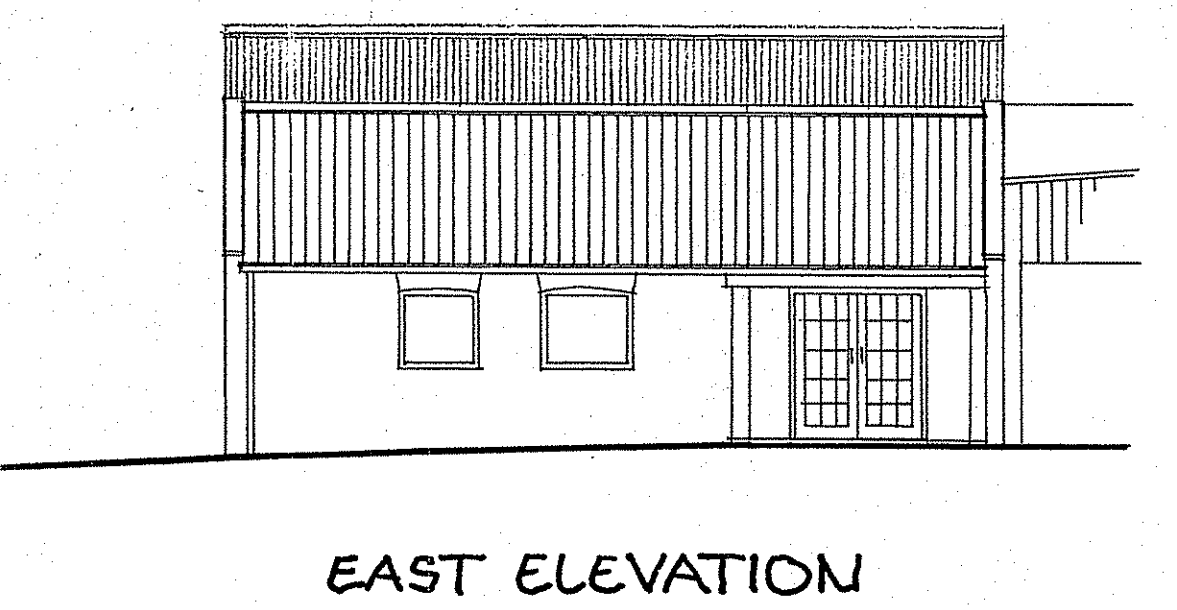
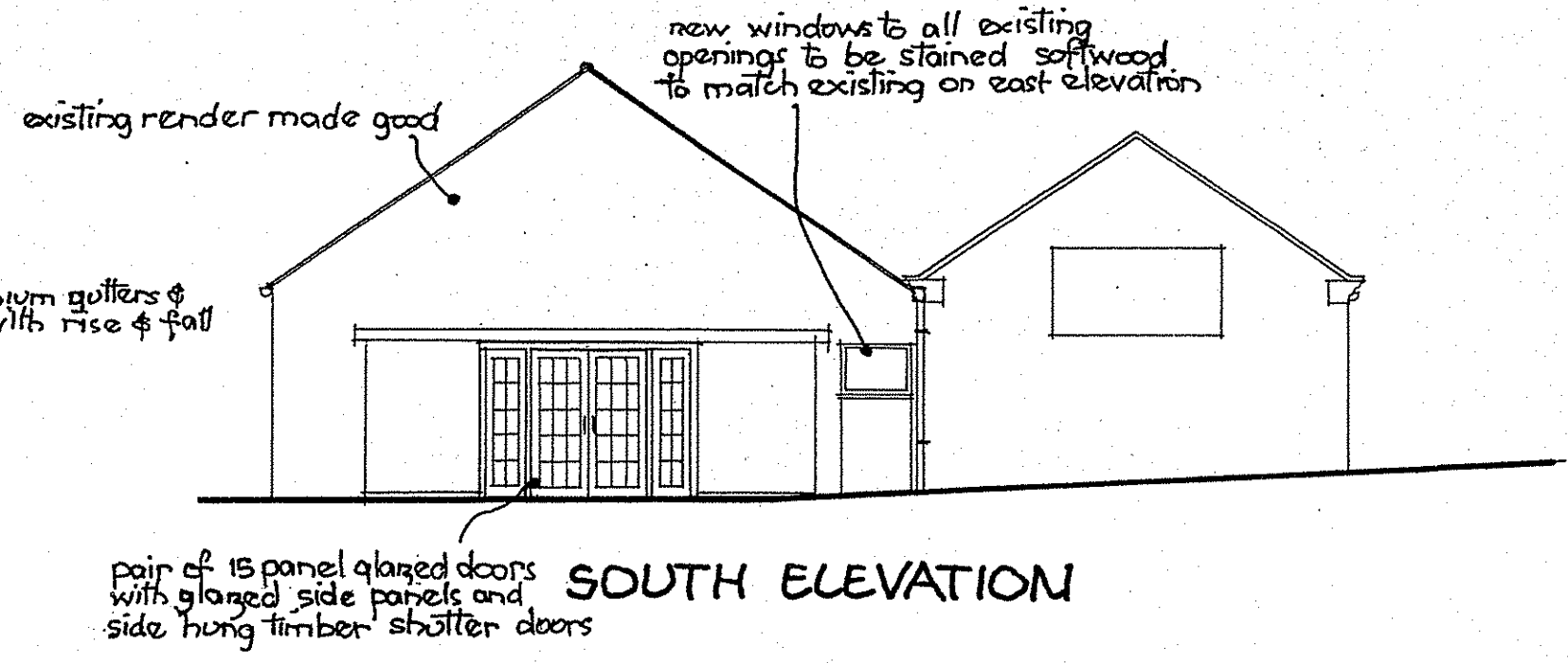
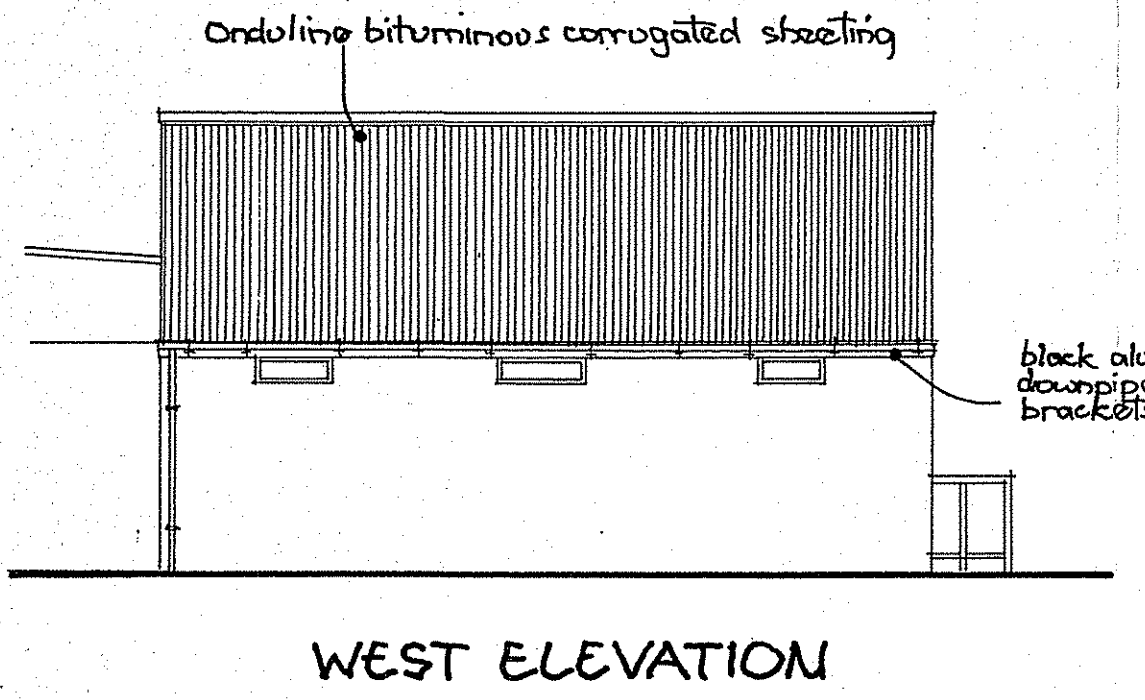
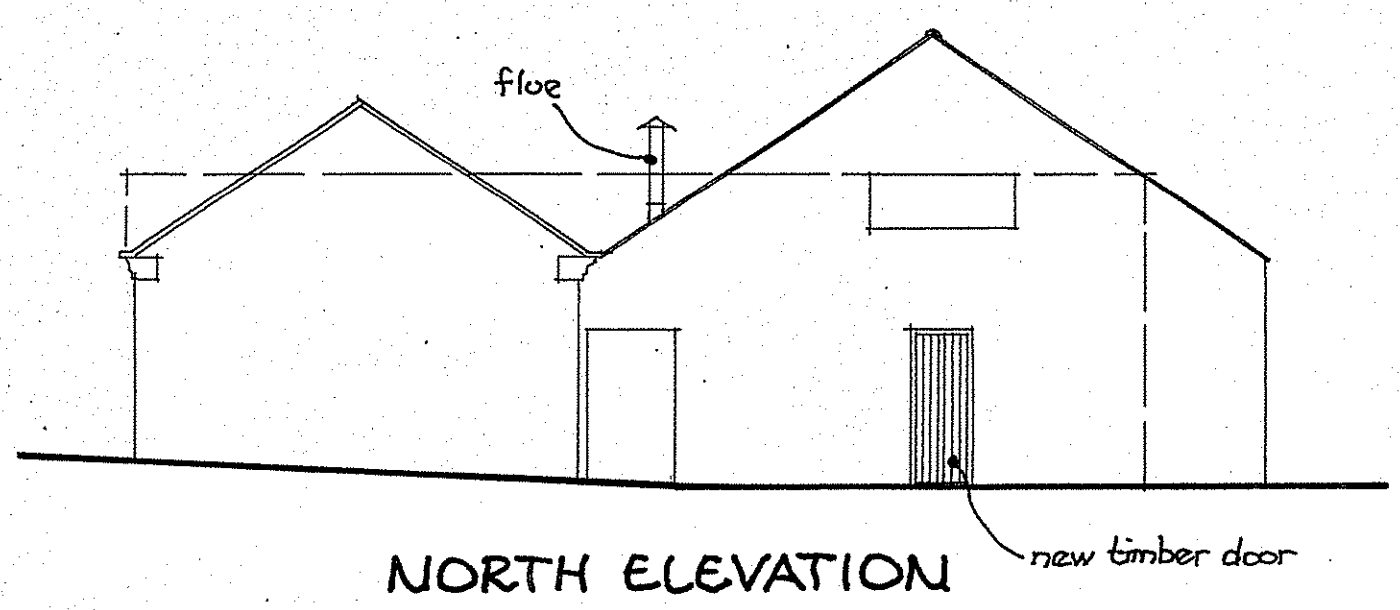


AMENDED

Notes



Revision A. April 13. Ref, entrance, cooking & access altered.
 Revision B July 13. Entrance changed & fence added.

Change of Use of farm buildings to retail craft sales area & tea rooms at High Farm, Newholm, Whitby. Drg.12127.03.B
 Scheme plans elevations & section. Scale 1:100 at A1.
 Mike Swinglehurst, Architect. The Stables, Wigman Hall, Crockey Hill, York YO19 4SQ.

NYMNP
 15 JUL 2013