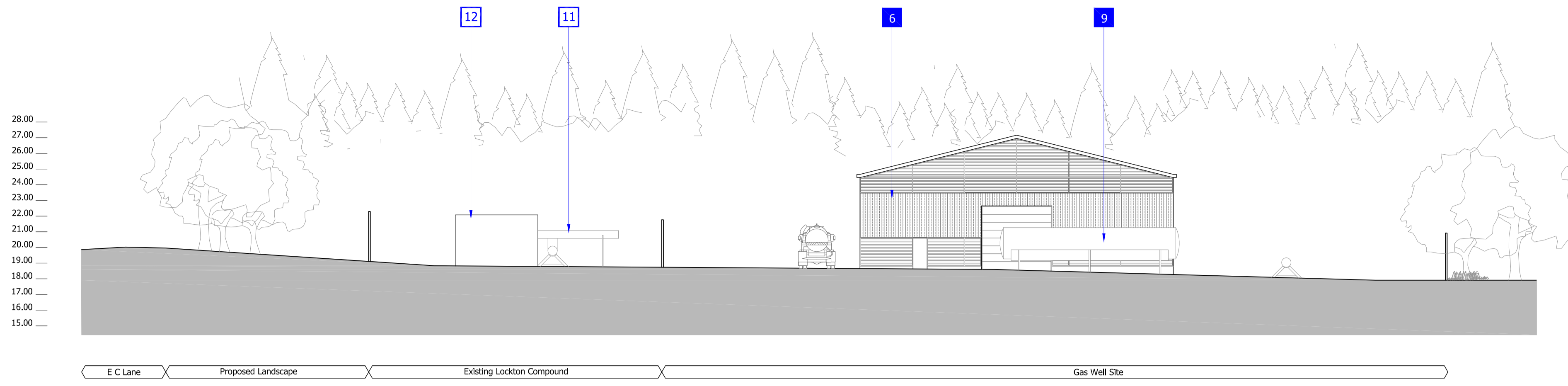
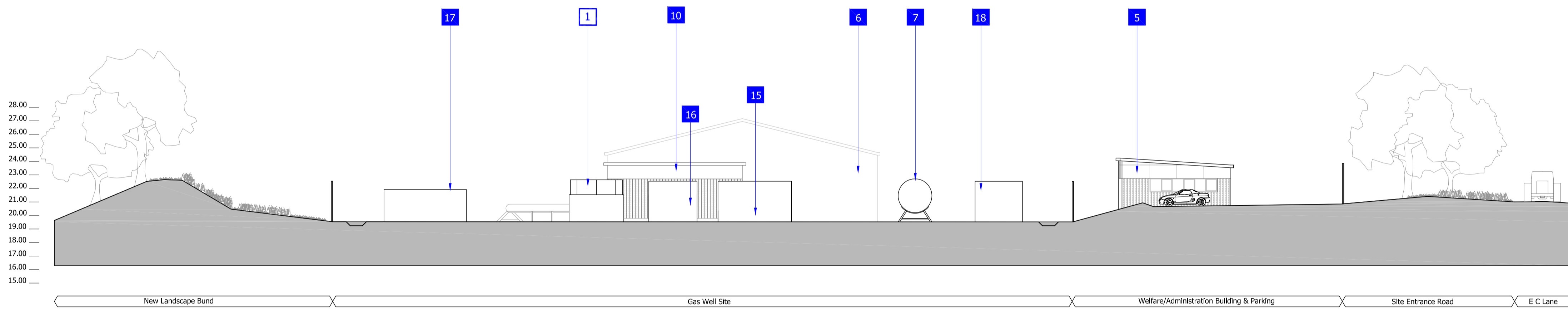


Indicative Proposed Materials

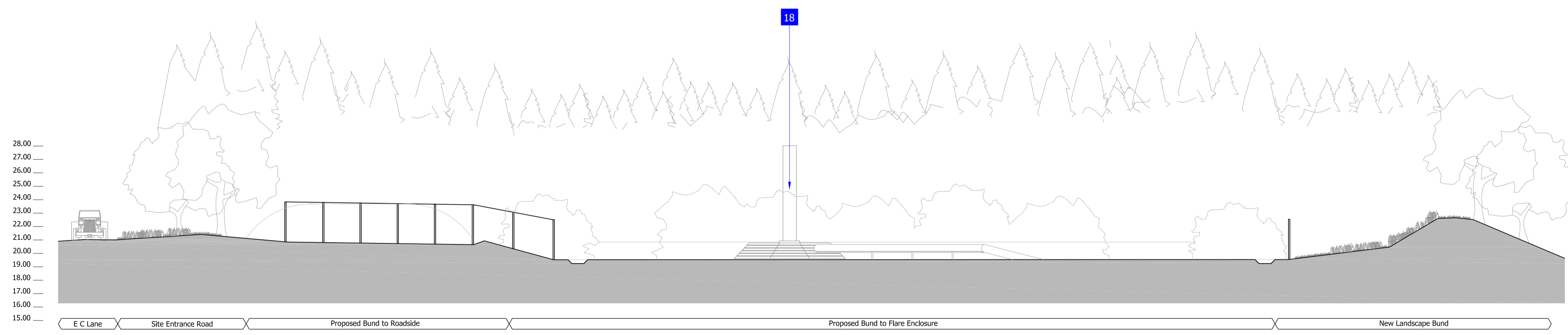
- Welfare/Administration Building**  
 Brick/Stone base plinth at least 4 brick courses high. Inner block/brick skin with cavity. Outer timber weather boarding layer - vertical joints to reflect Yorkshire Boarding. Roofs comprised of profiled cladding system in dark grey. Proposed windows and doors in aluminium system finished in grey. Construction details - downpipes etc. low profile gutters and downpipes.
- Gas Conditioning Building**  
 Brick/Stone base plinth at least 4 brick courses high. Inner skin with liner tray or composite panel. Outer timber weather boarding layer - vertical joints to reflect Yorkshire Boarding. Low and high level Louvre systems in dark grey. Roofs comprised of profiled cladding system in dark grey. GRP roof lights within system arranged to at least 30% of total roof area. Proposed service doors finished in grey. Construction details - downpipes etc. low profile gutters and downpipes.
- Enclosed Metering Skid**  
 Brick/Stone base plinth at least 4 brick courses high. Inner block/brick skin with cavity. Outer timber weather boarding layer - vertical joints to reflect Yorkshire Boarding Construction. Roofs comprised of profiled cladding system in dark grey. Proposed windows and doors in aluminium system finished in grey. Construction details - downpipes etc. low profile gutters and downpipes.
- Water Separator Building**  
 Finish GRP (Glass Reinforced Plastic - Pre-assembled) Enclosure - Dark Grey or brown.
- Gas Fired Heater**  
 Finish: Galvanised base coat with a grey or dark brown finish to enclosure.
- Gas Generator**  
 Finish: Galvanised base coat with a grey or dark brown finish to enclosure.



1 Sectional Elevation C-C  
 Site Section through Lockton Compound SCALE 1:200



2 Sectional Elevation D-D  
 Site Section through Gas Well site SCALE 1:200

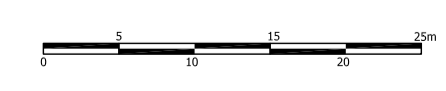


3 Sectional Elevation E-E  
 Site Section through Gas Well site to Bunds SCALE 1:200

- 1 Indicative location of Gas Well
- 2 Water Disposal Well
- 3 Drainage Interceptor Pit
- 4 Drainage Soakaway
- 5 Welfare/Administration Building: Toilets, meeting space for 6 +, kitchen, Motor Control Centre, Office.
- 6 Gas Conditioning Building (20m x 34m x 8.5 m): Separation and Water Handling Unit, Amine and Glycol Contactors, Auxillary Equipment, Produced Liquid Drum, Dew Point Control Unit, Pig Launcher.
- 7 Fire Water Tank: 50 Cubic Meters
- 8 Pipeline Pig Trap Area
- 9 Lean Rich Amine and Glycol Storage
- 10 Metering Skid (10m x 5m)
- 11 Indicative location of existing LTZ Pipe Manifold
- 12 Indicative location of existing NGN Building
- 13 Flare (footprint 225 sqm)
- 14 Loading Area
- 15 Water Separator Building
- 16 Gas Fired Heater
- 17 Water Storage Tank
- 18 Gas Generator

Project  
**EBBERSTON EDS**

Drawing Title  
**PROPOSED SITE  
 ELEVATIONAL SECTIONS - SHEET 2**  
 Date June 2013 Scale 1:200@A1 Drawn by SJ/RP NC  
 Project No 19819 Drawing No P\_15 Revision A



**BARTON WILLMORE**  
 Planning • Master Planning & Urban Design  
 Architecture • Landscape Planning & Design • Project Services  
 Environmental & Sustainability Assessment • Graphic Design  
 bartonwillmore.co.uk