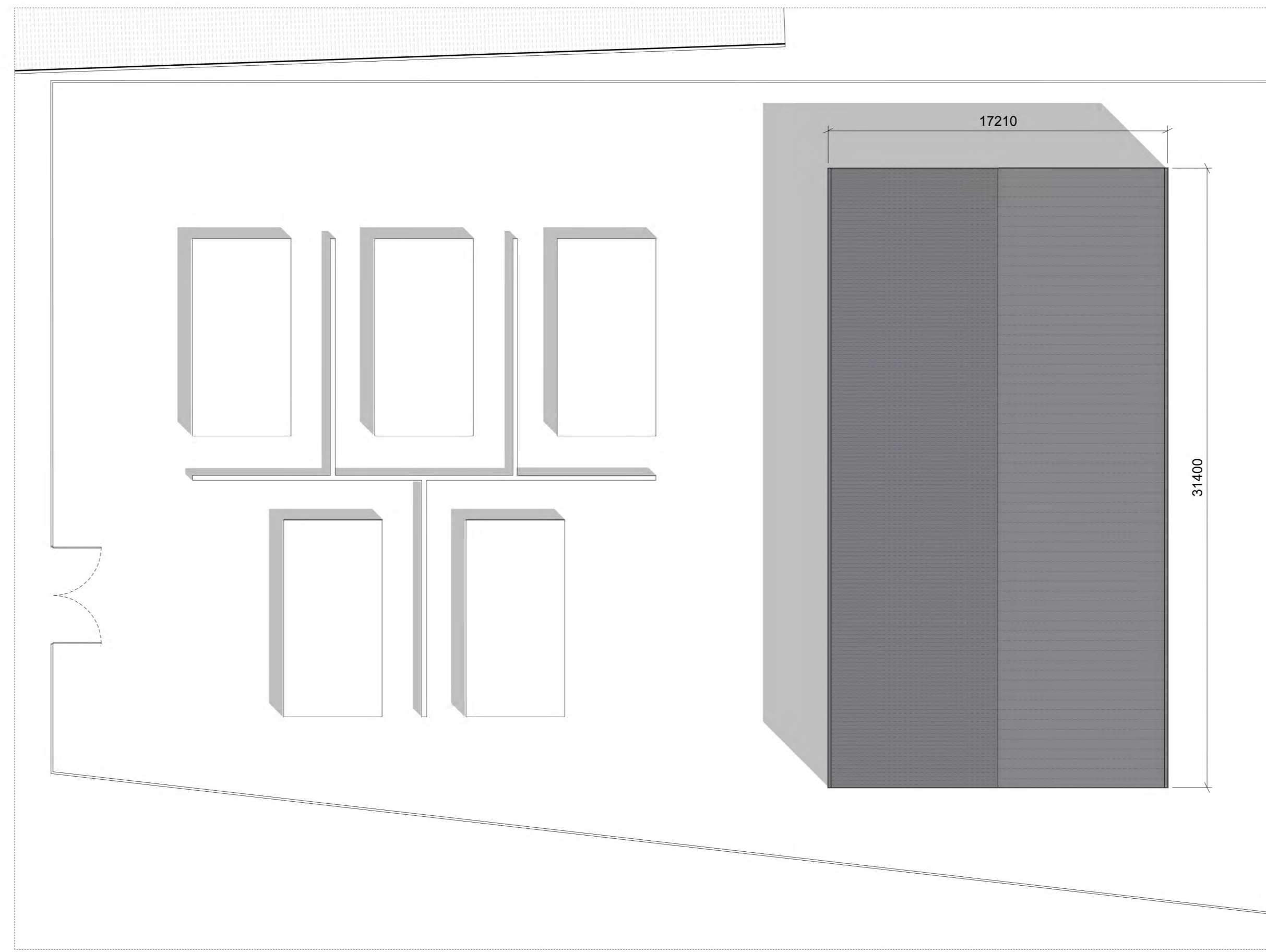


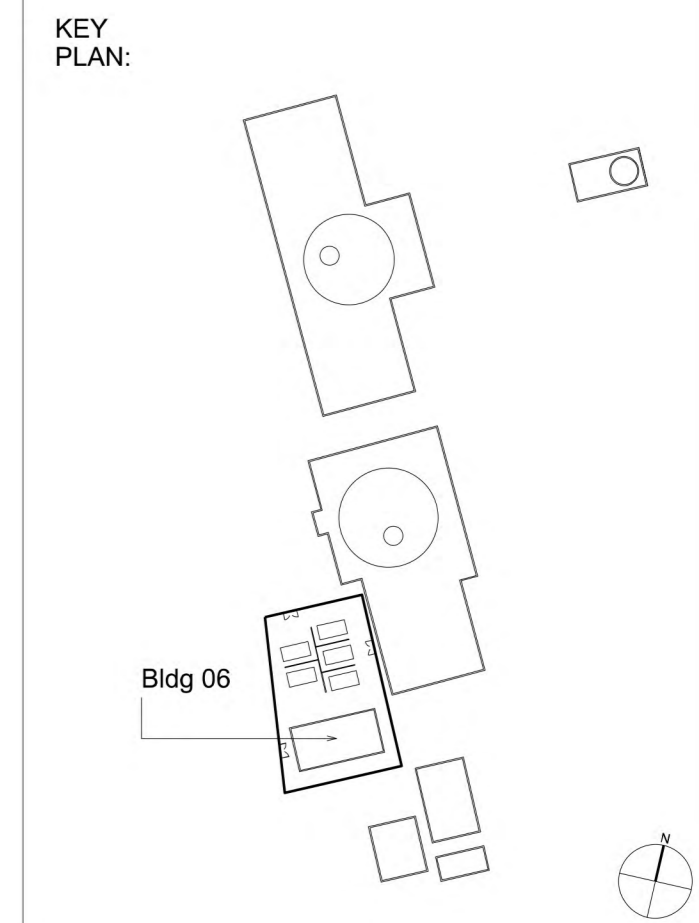
01 Building 06 | Floor Plan
1:200



02 Building 06 | Roof Plan
1:200

Notes:
Unless indicated, this drawing is for information only. Do not scale from this drawing for purposes other than planning application ref: Woodsmith Mine Section 73 Application June 2017. All dimensions to be checked on site.

- MATERIAL KEY**
- (M-01) Timber wall cladding (varied board widths)
 - (M-02) Pre-cast textured concrete panel cladding
 - (M-03) Dark Grey non-reflective coated profiled sheet metal roof cladding
 - (M-04) Grey non-reflective coated metal industrial access door
 - (M-05) Grey non-reflective coated metal door
 - (M-06) Miss board timber wall cladding with varying surface finishes behind (varied board widths)
- Refer to Estell Warren's information for defined site levels and max ridge heights.



Revisions:

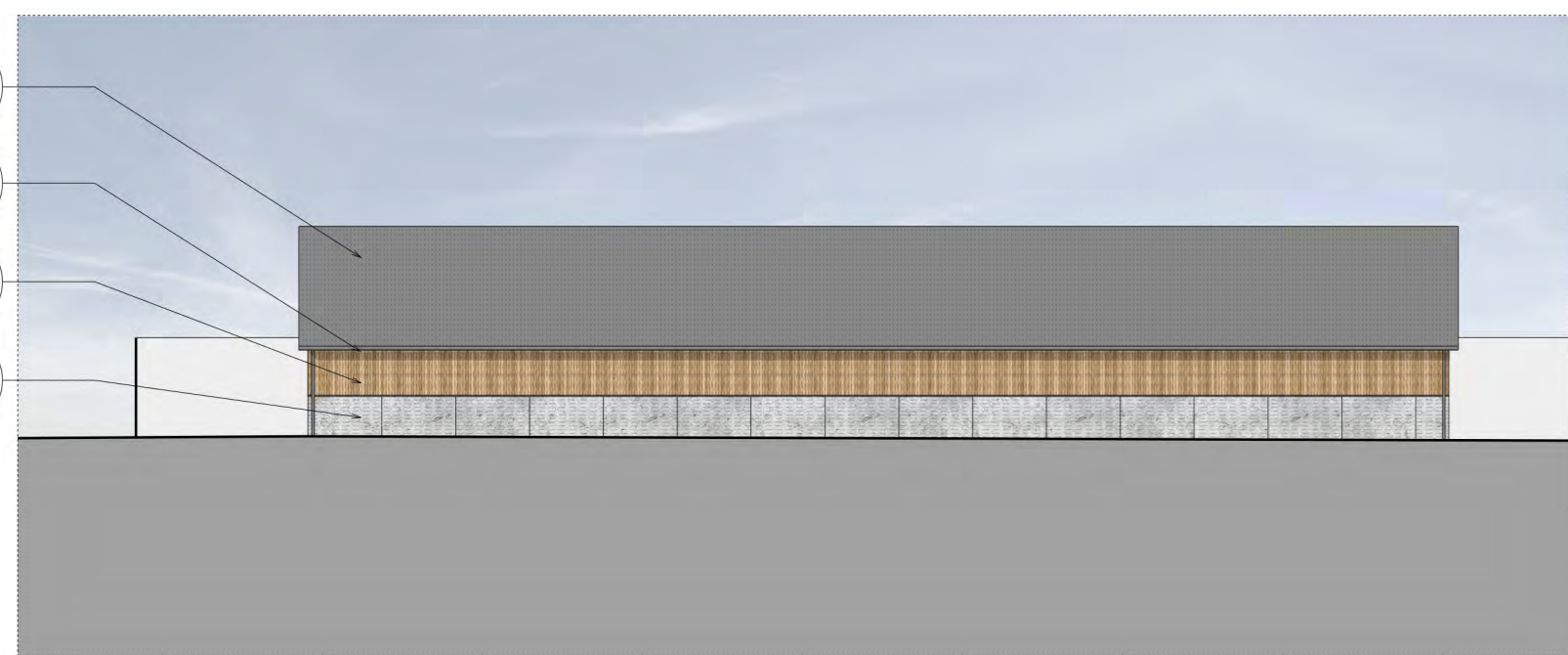
Date:	Rev:	Note:	Check:
25.09.14	0	Planning Issue	PC
11.02.15	1	Updated in accordance with NLP's Schedule of Changes for the SEI submission.	IWa
21.08.15	2	Updated cladding material following planning review.	IWa
25.09.15	3	Updated cladding material following planning review.	IWa
06.06.17	4	Updated for Section 73 Application June 2017, in accordance with Planning Review dated 26.05.17	IWa
29.06.17	5	Updated for Section 73 Application June 2017, following comments received 27.06.17	JS

Copyright Cartwright Pickard Architects Ltd.

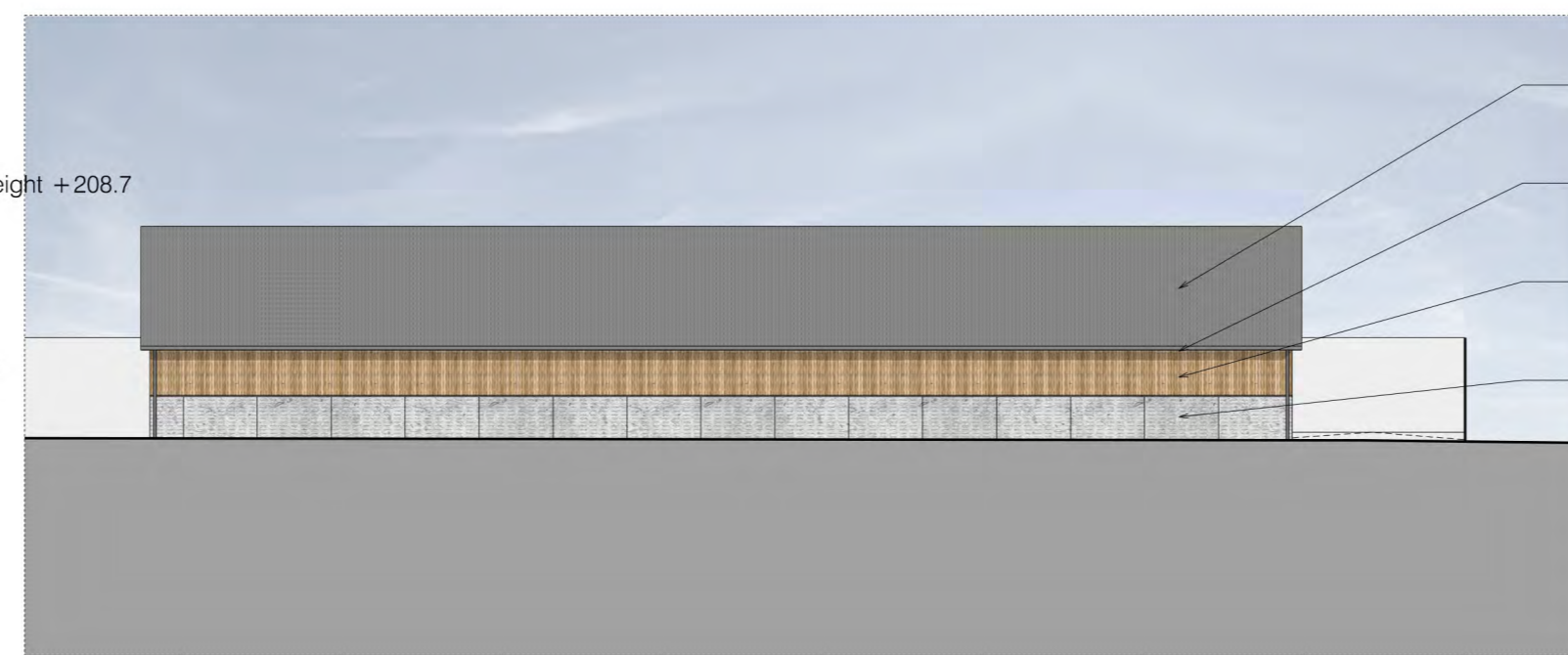
cartwright pickard architects
 Round Foundry Media Centre
 Foundry Street
 Leeds
 LS11 5QP
 tel 0113 394 4380
 e-mail mail@cartwrightpickard.com

Project: 653 York Potash Mine Building 06 Substation
Drawing Title: Plan, Section and Elevations - Colour
Scale: 1:200 @ A1
Drwg. Created: June 2014

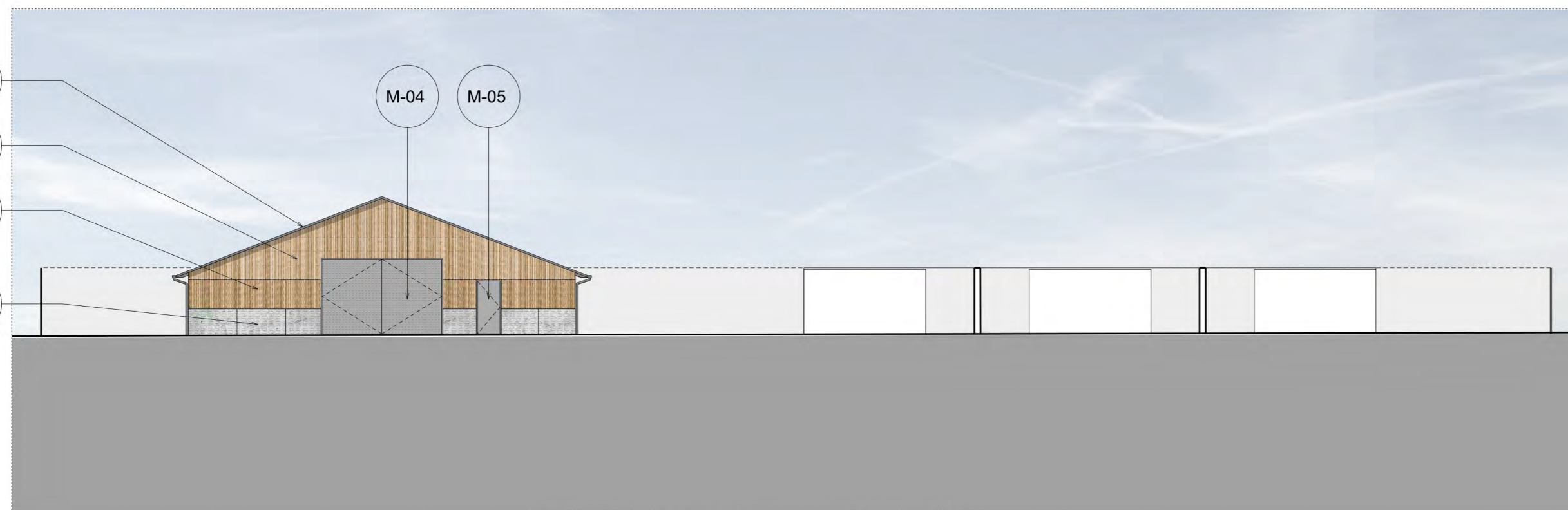
Drwg. No:	653-AP-0053
Status:	Issue (Not for Construction)
Revision:	5



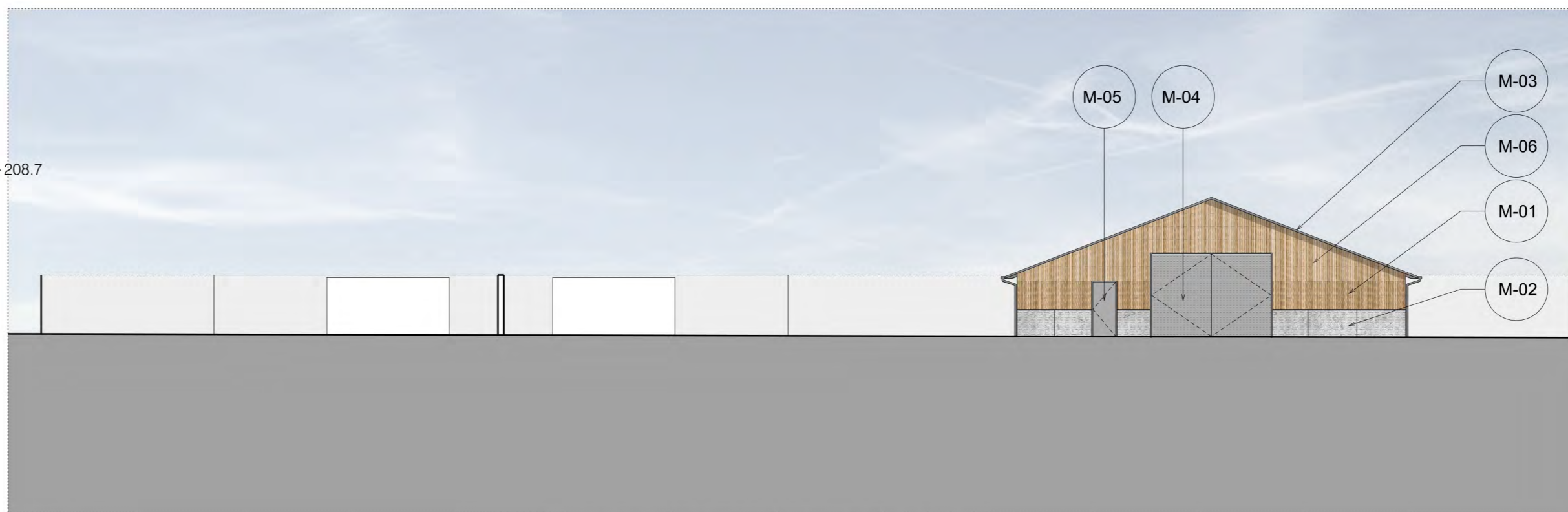
03 Building 06 | North Elevation
1:200



04 Building 06 | South Elevation
1:200



05 Building 06 | East Elevation
1:200



06 Building 06 | West Elevation
1:200