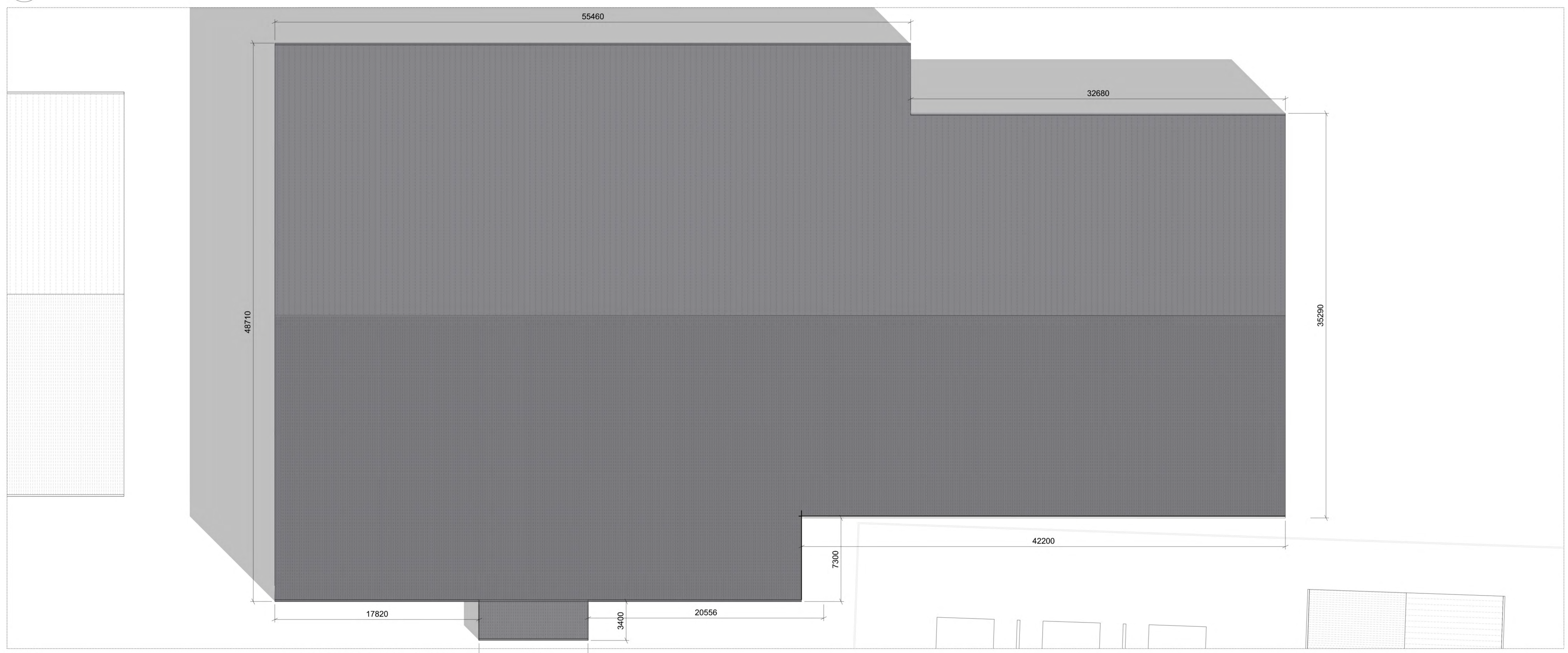


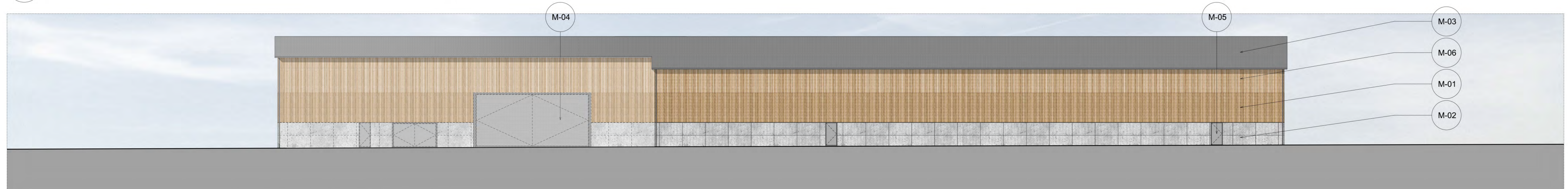
01 Building 07 | Floor Plan  
1:200



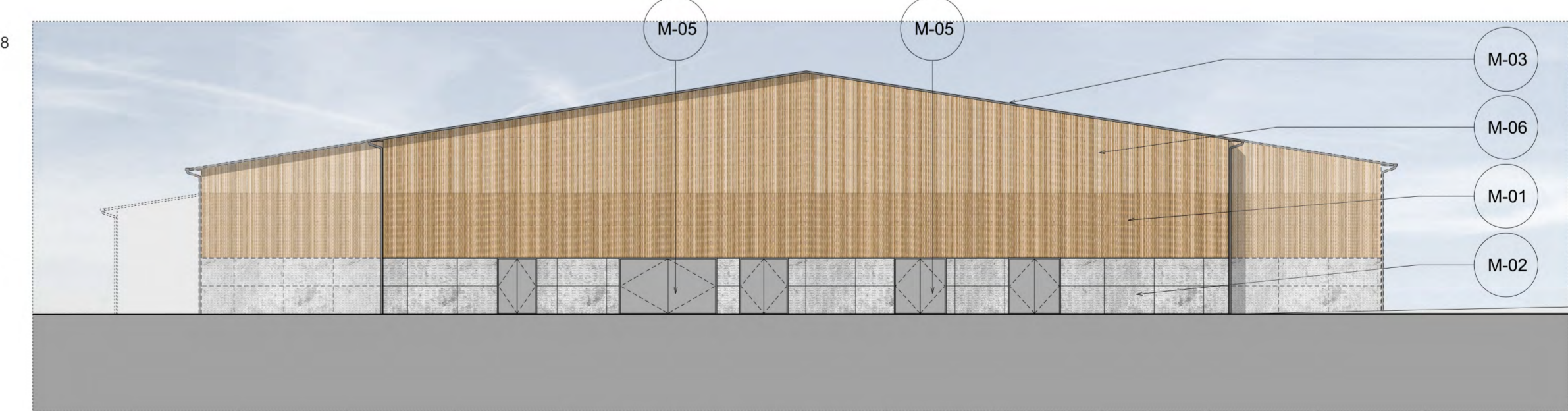
02 Building 07 | Roof Plan  
1:200



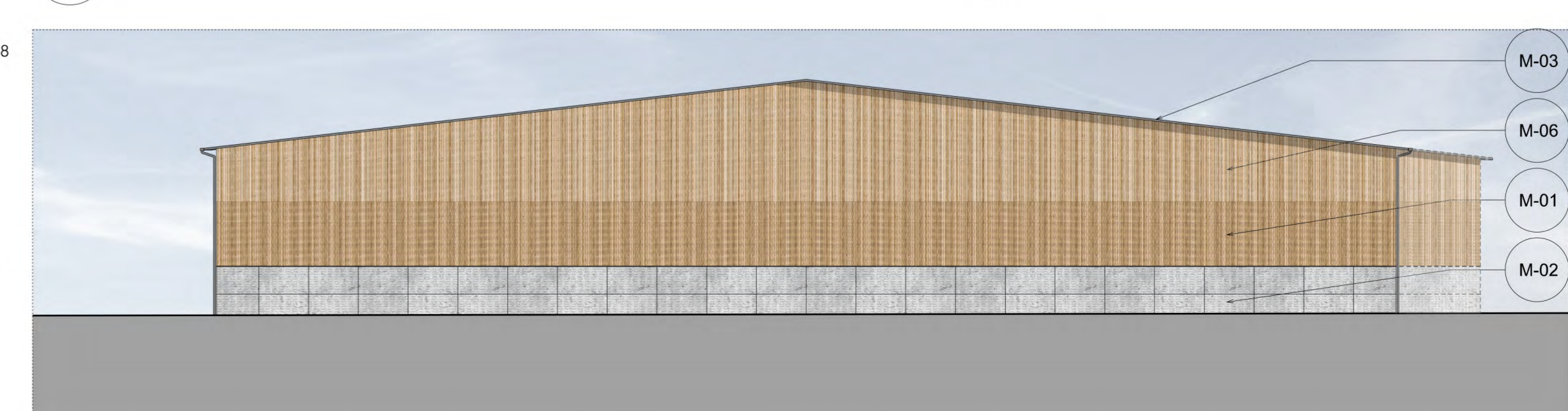
03 Building 07 | West Elevation  
1:200



05 Building 07 | East Elevation  
1:200



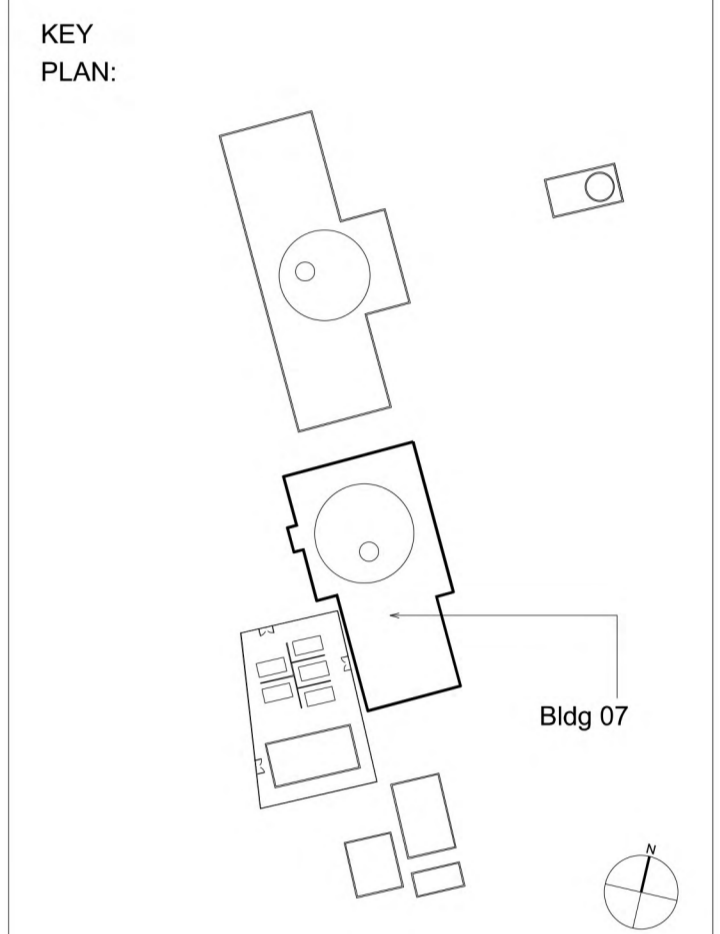
04 Building 07 | South Elevation  
1:200



06 Building 07 | North Elevation  
1:200

Notes:  
Unless indicated, this drawing is for information only. Do not scale from this drawing for purposes other than planning application ref: Woodsmith Mine Section 73 Application June 2017.  
All dimensions to be checked on site.

- MATERIAL KEY
- (M-01) Timber wall cladding (varied board widths)
  - (M-02) Pre-cast textured concrete panel cladding
  - (M-03) Dark Grey non-reflective coated profiled sheet metal roof cladding
  - (M-04) Grey non-reflective coated metal industrial access door
  - (M-05) Grey non-reflective coated metal door
  - (M-06) Mes board timber wall cladding with varying surface finishes behind (varied board widths)
- Refer to Estall Warren's information for defined site levels and max ridge heights.



Revisions:

Date:	Rev:	Note:	Check:
25.09.14	0	Planning Issue	PC
11.02.15	1	Updated in accordance with NLP's Schedule of Changes for the SEI submission.	IWA
21.08.15	2	Updated cladding material following planning review.	IWA
25.09.15	3	Updated cladding detail following planning review.	IWA
06.06.17	4	Updated for Section 73 Application June 2017, in accordance with Planning Review dated 26.05.17	IWA
29.06.17	5	Updated for Section 73 Application June 2017, following comments received 27.06.17	JS

Copyright Cartwright Pickard Architects Ltd.

**cartwright pickard** architects

Round Foundry Media Centre  
Foundry Street  
Leeds  
LS11 5QP

tel: 0113 394 4380  
e-mail: mail@cartwrightpickard.com

Project: 653 York Potash  
Mine Building 07  
Men and Material Shaft Winder  
Plan, Section and Elevations -  
Colour

Drawing Title: 1:200 @ A0  
Scale: 1:200 @ A0  
Drwg. Created: June 2014

Drwg. No: 653-AP-0054  
Status: Issue  
(Not for Construction)

Revision: **5**