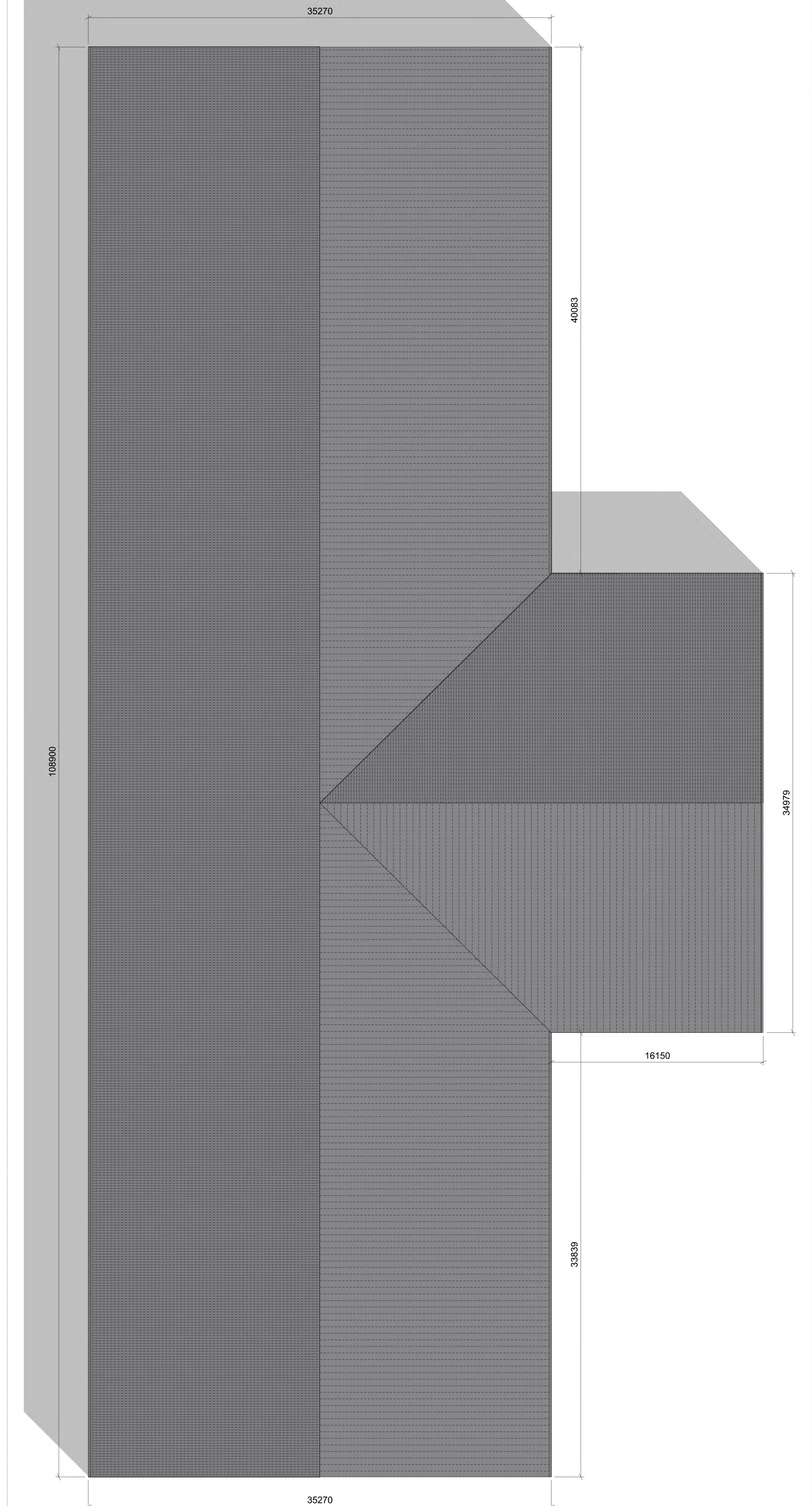


01 Building 08 | Floor Plan
1 : 200



02 Building 08 | Roof Plan
1 : 200



03 Building 08 | West Elevation
1 : 200



05 Building 08 | East Elevation
1 : 200



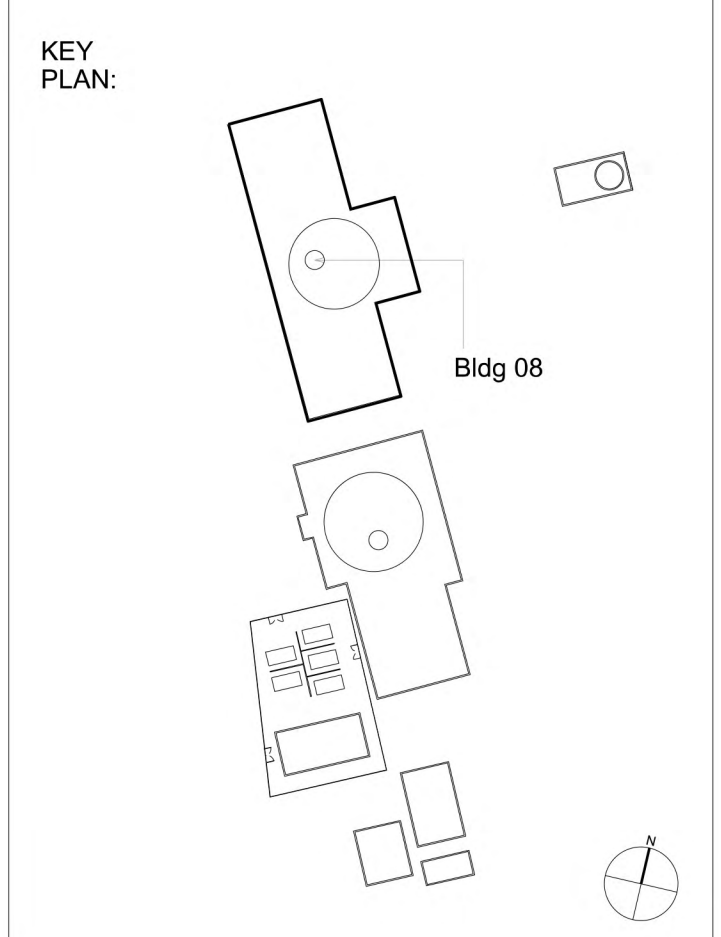
04 Building 08 | North Elevation
1 : 200



06 Building 08 | South Elevation
1 : 200

Notes:
Unless indicated, this drawing is for information only.
Do not scale from this drawing for purposes other than
planning application ref: Woodsmith Mine Section 73
Application June 2017.
All dimensions to be checked on site.

- MATERIAL KEY
- (M-01) Timber wall cladding (varied board widths)
 - (M-02) Pre-cast textured concrete panel cladding
 - (M-03) Dark Grey non-reflective coated profiled sheet metal roof cladding
 - (M-04) Grey non-reflective coated metal industrial access door
 - (M-05) Grey non-reflective coated metal door
 - (M-06) Miss board timber wall cladding with varying surface finishes behind (varied board widths)
- Refer to Estell Warren's information for defined site levels and max ridge heights.



Revisions:

Date:	Rev:	Note:	Check:
25.09.14	0	Planning Issue	PC
11.02.15	1	Updated in accordance with NLP's Schedule of Changes for the SEI submission.	IWA
21.08.15	2	Updated cladding material following planning review.	IWA
25.09.15	3	Updated cladding detail following planning review.	IWA
06.06.17	4	Updated for Section 73 Application June 2017, in accordance with Planning Review dated 28.05.17	IWA
29.06.17	5	Drawing Sheet changed from A1 to A0 Updated for Section 73 Application June 2017, following comments received 27.06.17	JS
10.07.17	6	Updated floor plan to co-ordinate with elevations	IWA

Copyright Cartwright Pickard Architects Ltd.

cartwright pickard architects
 Round Foundry Media Centre
 Foundry Street
 Leeds
 LS11 5QP
 tel 0113 394 4380
 e-mail mail@cartwrightpickard.com

Project: 653 York Potash
 Mine Building 08
 Mineral ShaR Winder Building
 Plan, Section and Elevations -
 Colour

Scale: 1:200 @ A0
 Drwg. Created: June 2014

Drwg. No: 653-AP-0055
 Status: Issue
 (Not for Construction)
 Revision: **6**