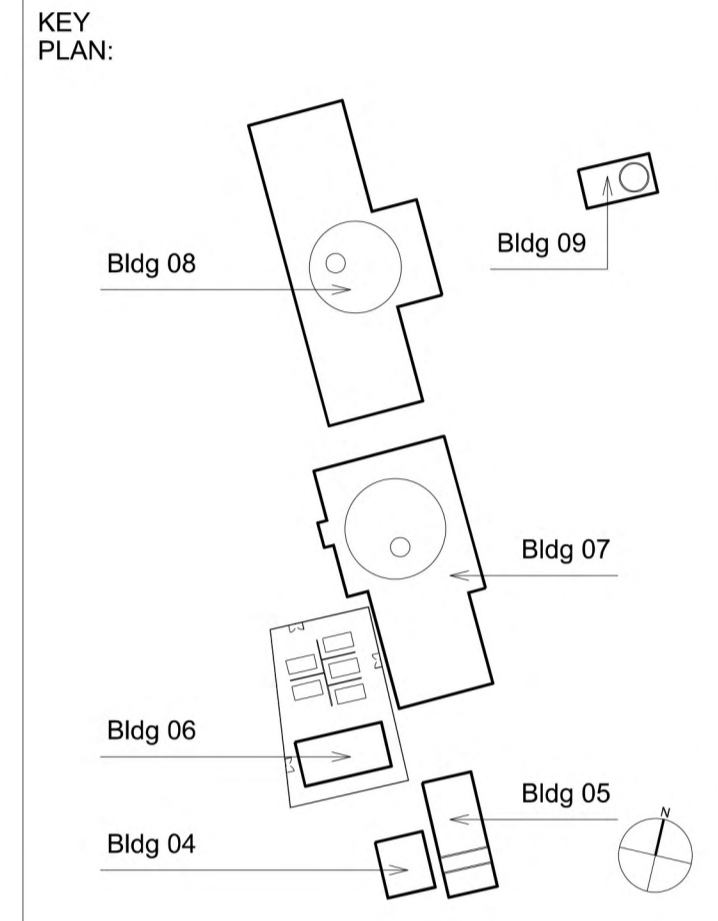


**Notes:**  
 Unless indicated, this drawing is for information only. Do not scale from this drawing for purposes other than planning application ref: Woodsmith Mine Section 73 Application June 2017. All dimensions to be checked on site.

- MATERIAL KEY**
- (M-01) Timber wall cladding (varied board widths)
  - (M-02) Pre-cast textured concrete panel cladding
  - (M-03) Dark Grey non-reflective coated profiled sheet metal roof cladding
  - (M-04) Grey non-reflective coated metal industrial access door
  - (M-05) Grey non-reflective coated metal door
  - (M-06) Miss board timber wall cladding with varying surface finishes behind (varied board widths)
- Refer to Estell Warren's information for defined site levels and max ridge heights.



**Revisions:**

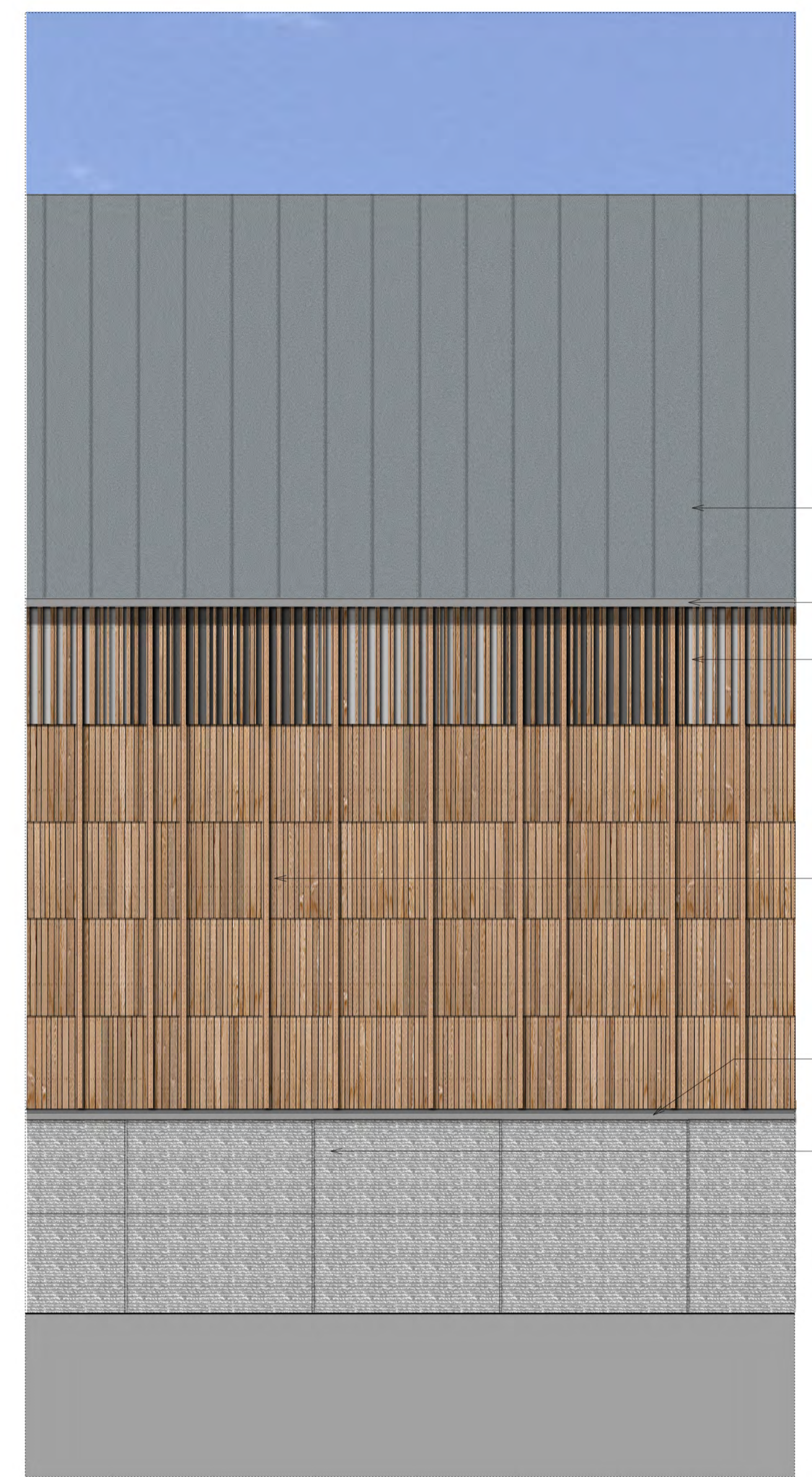
Date:	Rev:	Note:	Check:
25.09.14	0	Planning Issue	PC
11.02.15	1	Updated in accordance with NLP's Schedule of Changes for the SEI submission.	IWa
21.08.15	2	Updated cladding material following planning review.	IWa
25.09.15	3	Updated cladding detail following planning review.	IWa
06.06.17	4	Updated for Section 73 Application June 2017, in accordance with Planning Review dated 26.05.17	IWa



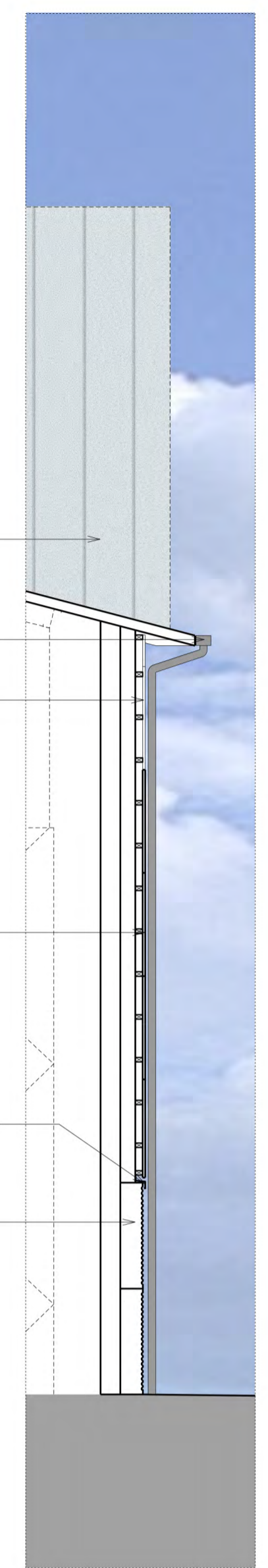
01 Building 04/05/06/09  
 Typical Elevation  
 1: 50 @ A1



02 Building 04/05/06/09  
 Typical Section  
 1: 50 @ A1



03 Building 07/08  
 Typical Elevation  
 1: 50 @ A1



04 Building 07/08  
 Typical Section  
 1: 50 @ A1

Copyright Cartwright Pickard Architects Ltd.

**cartwright pickard** architects  
 Round Foundry Media Centre  
 Foundry Street  
 Leeds  
 LS11 5QP  
 tel 0113 394 4380  
 e-mail mail@cartwrightpickard.com

Project: 653 York Potash  
 Drawing Title: Mining Buildings Elevation Study - Colour  
 Scale: 1: 50 @ A1  
 Drwg. Created: June 2014

Drwg. No:	653-AP-0058
Status:	Issue (Not for Construction)
Revision:	4