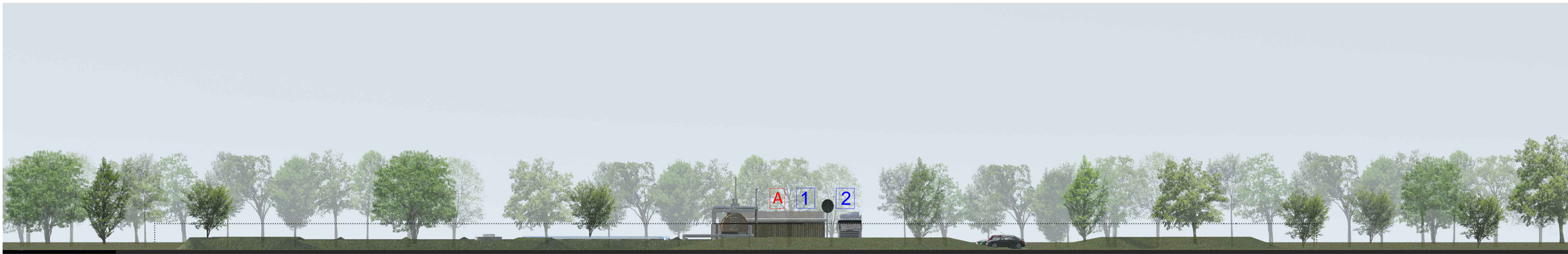


INDICATIVE PROPOSED MATERIALS

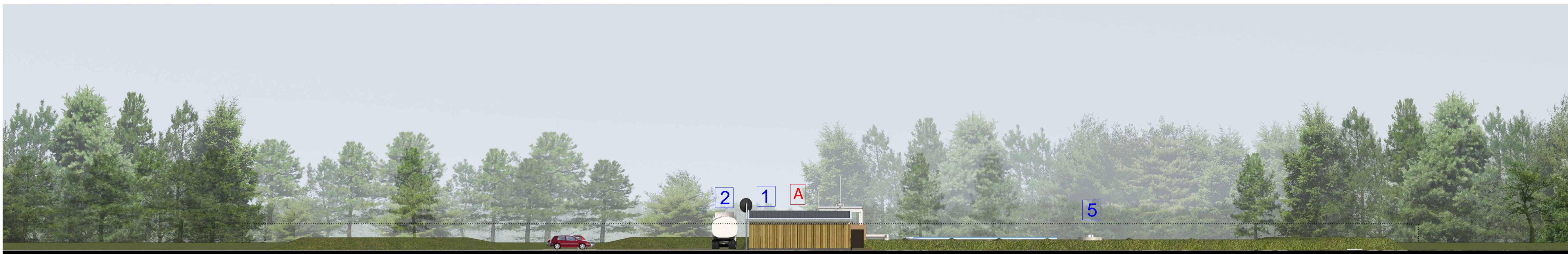
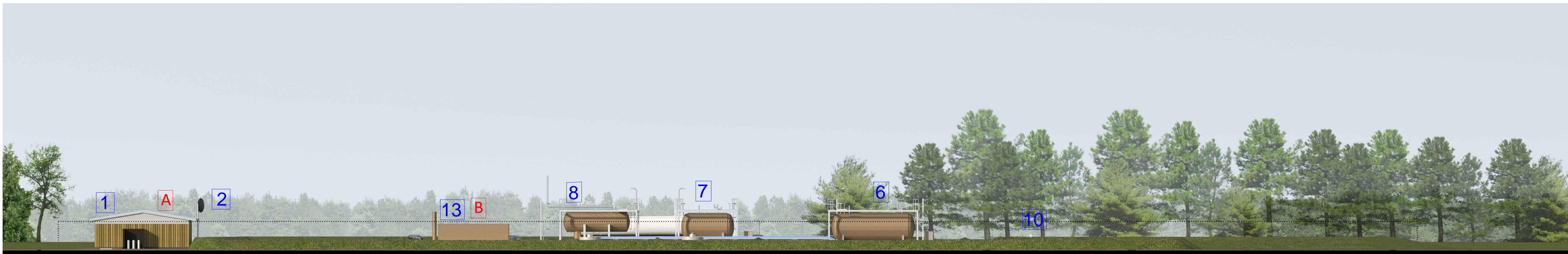
A LOCAL EQUIPMENT ROOM
 Brick/Stone base plinth at least 4 brick courses high. Inner block/brick skin with cavity. Outer timber weather boarding layer - vertical joints to reflect Yorkshire Boarding. Roofs comprised of profiled cladding system in dark grey. Proposed windows and doors in aluminium system finished in grey. Construction details - downpipes etc. low profile gutters and downpipes.

B DIESEL GENERATOR
 Finish: Galvanised base coat with a grey or dark brown finish to enclosure.

C All Equipment Generally, Tanks Etc to be finished in galvanised base coat with a grey or dark brown finish



- 1 LOCAL EQUIPMENT ROOM
- 2 SATELLITE DISH
- 3 NITROGEN CYLINDERS
- 4 INSTRUMENT AIR COMPRESSOR
- 5 EB-1 WELLHEAD (Existing)
- 6 HYDRATE INHIBITOR PACKAGE
- 7 CORROSION / SCALE INHIBITOR PACKAGE
- 8 WELLHEAD WATER SEPARATOR
- 9 WATER PRODUCTION & RE-INJECTION WELL
- 10 12" GAS PIPELINE PIG LAUNCHER
- 11 CCTV TOWER
- 12 SURFACE WATER INTERCEPTOR PIT
- 13 DIESEL GENERATOR



Project
KGS GAS PIPELINE

Drawing Title
Proposed Illustrative Elevations

Date	Scale	Drawn by	Check by
July 2014	NTS	MD	RP
Project No	Drawing No	Revision	
23428	P_10	A	



Planning • Master Planning & Urban Design
 Architecture • Landscape Planning & Design • Project Services
 Environmental & Sustainability Assessment • Graphic Design

bartonwillmore.co.uk



Offices at Reading London Bristol Cambridge Cardiff Ebbw Vale Edinburgh Leeds Manchester Solihull