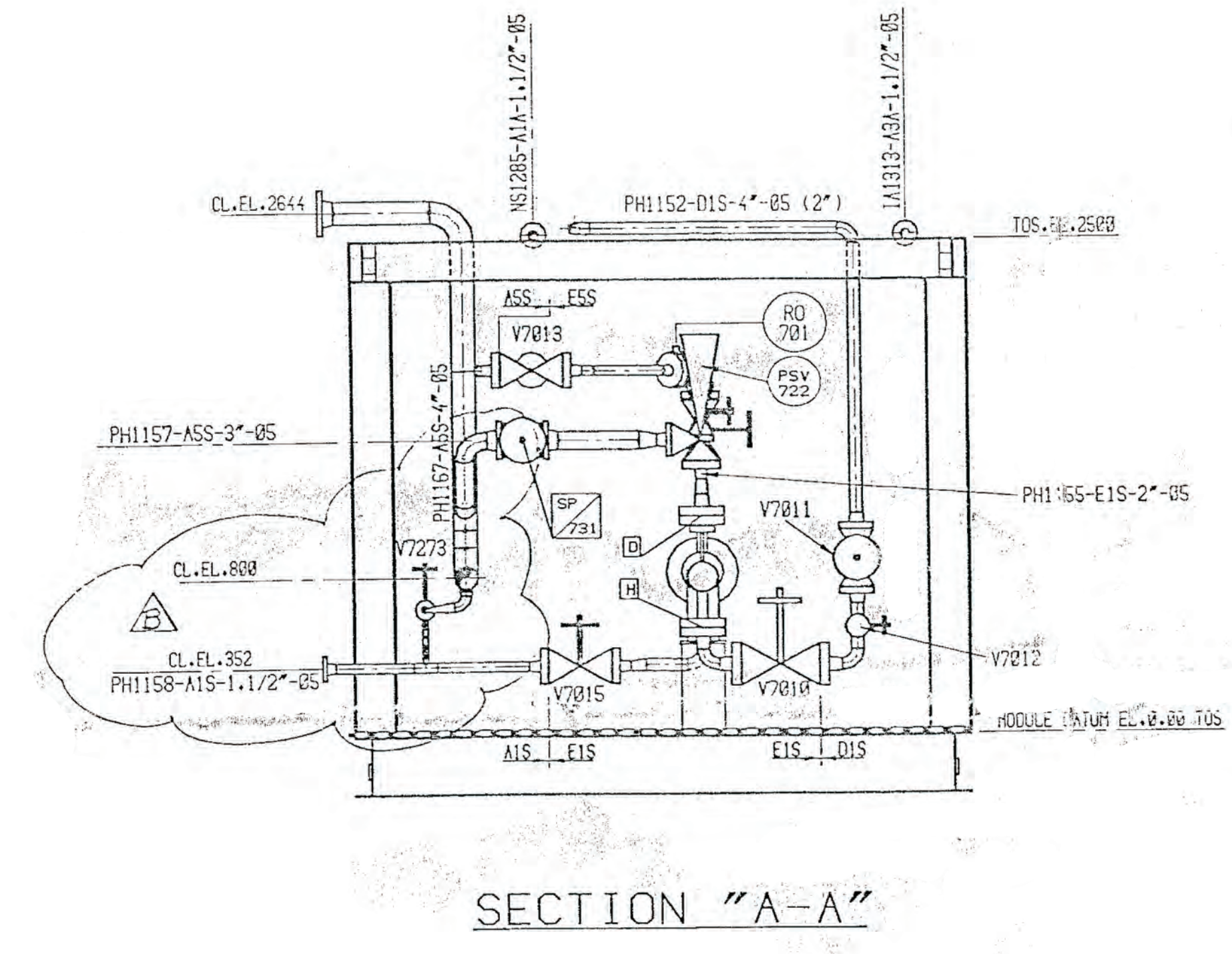
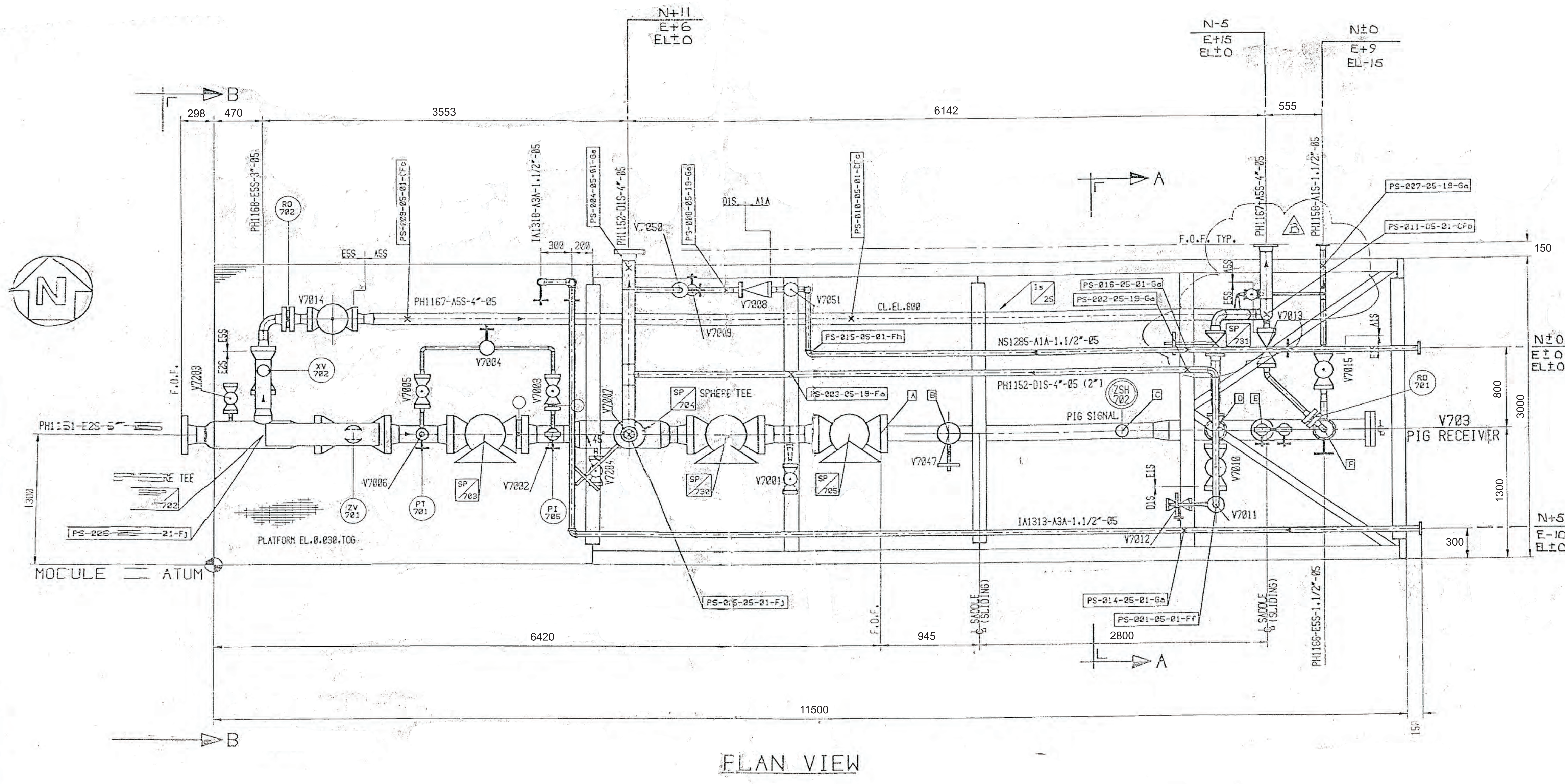


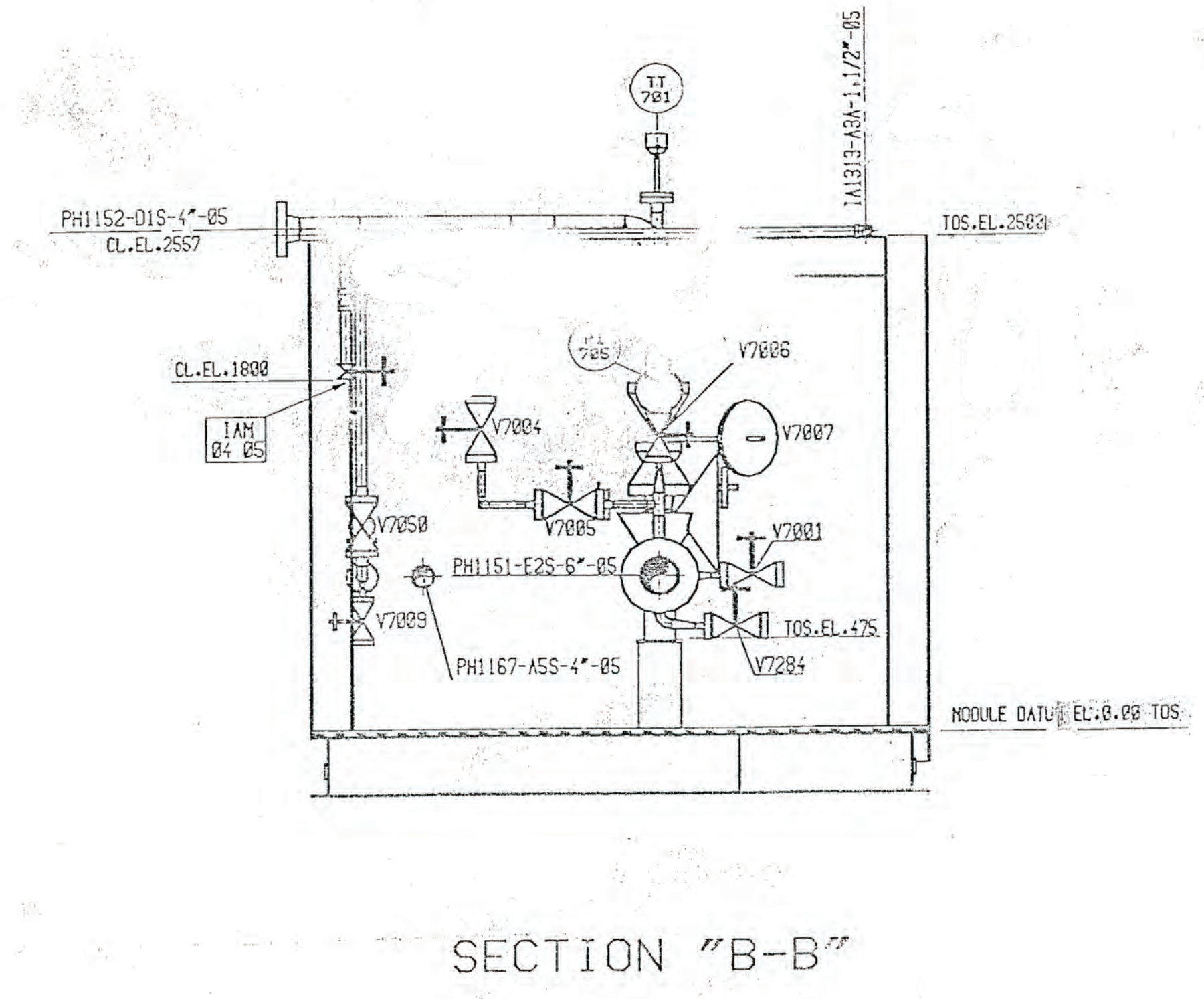
ELEVATION LOOKING NORTH



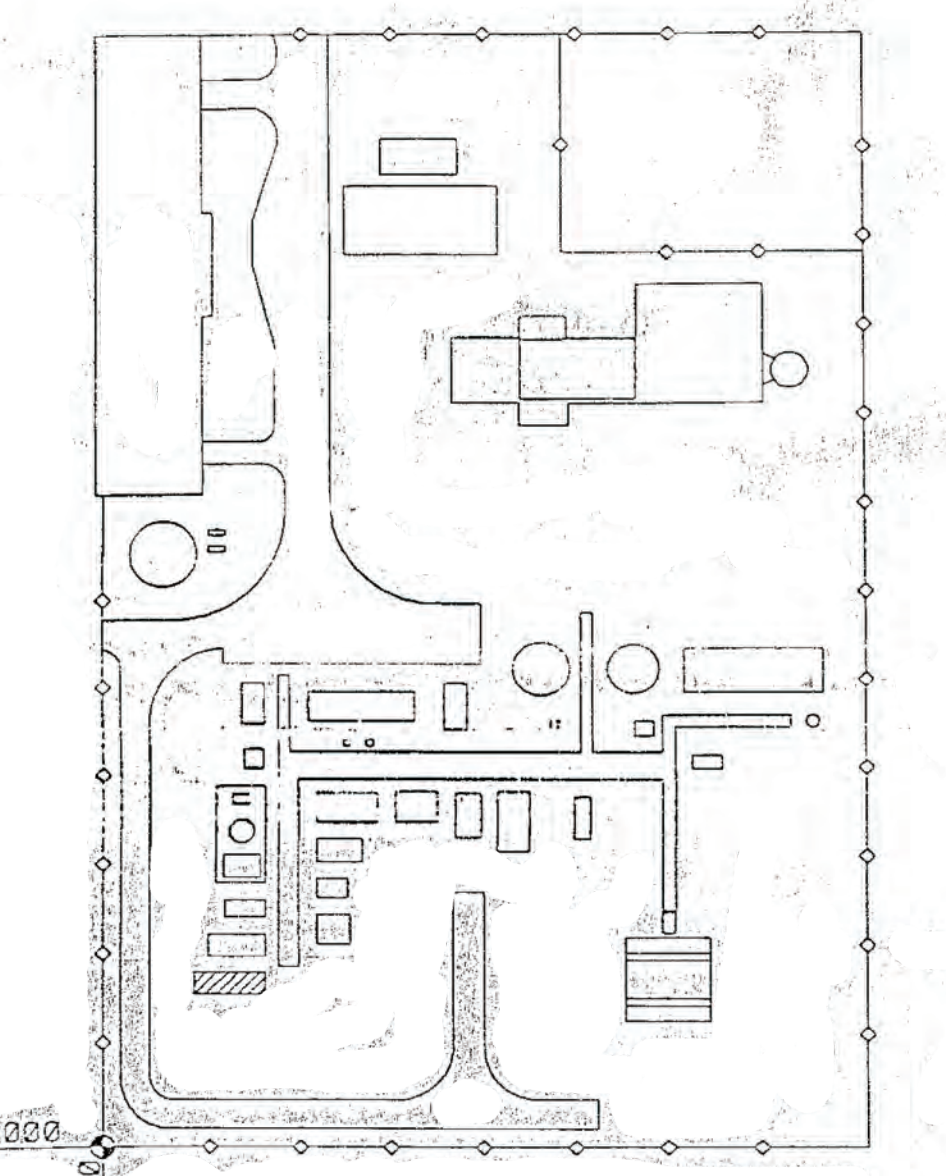
SECTION "A-A"



PLAN VIEW



SECTION "B-B"



THIS DRAWING
PLOT PLAN SCALE 1:100
SLP CROWN
REVIEWED
A.F.C.
14 MAR 1994

COSTAIN
ENGINEERING & CONSTRUCTION
COSTAIN OIL, GAS & PROCESS LIMITED
PROCESS CONTRACTING DIVISION
Costain House
Styal Road
Manchester M22 5AN

ENGINEER APPROVAL		ENGINEER APPROVAL		ENGINEER APPROVAL		ENGINEER APPROVAL		ENGINEER APPROVAL	
REV	DATE	REV	DATE	REV	DATE	REV	DATE	REV	DATE
A	10/02/94	B	14/03/94	C	14/03/94	D	14/03/94	E	14/03/94
DRYAN		DRYAN		DRYAN		DRYAN		DRYAN	
DRYAN		DRYAN		DRYAN		DRYAN		DRYAN	

THIS DRAWING AND THE INFORMATION CONTAINED THEREIN IS THE PROPERTY OF COSTAIN OIL GAS & PROCESS LIMITED AND IS LENT ON CONDITION THAT IT WILL NOT BE REPRODUCED, COPIED, OR DISCLOSED, DIRECTLY OR INDIRECTLY, FOR ANY PURPOSE OTHER THAN THAT SPECIFICALLY FURNISHED.

CLIENT: SCOTTISH POWER
TITLE: KWAITON GENERATING STATION, PIPING & V/A - MODULE 1712, (V703).
SCALE: 1/25
DRAWING NUMBER: 3250-4005
REV B