

NYM / 2013 / 0424 / FL



NYM
29 OCT 2013

2000 lts 1830 x1120 x1220

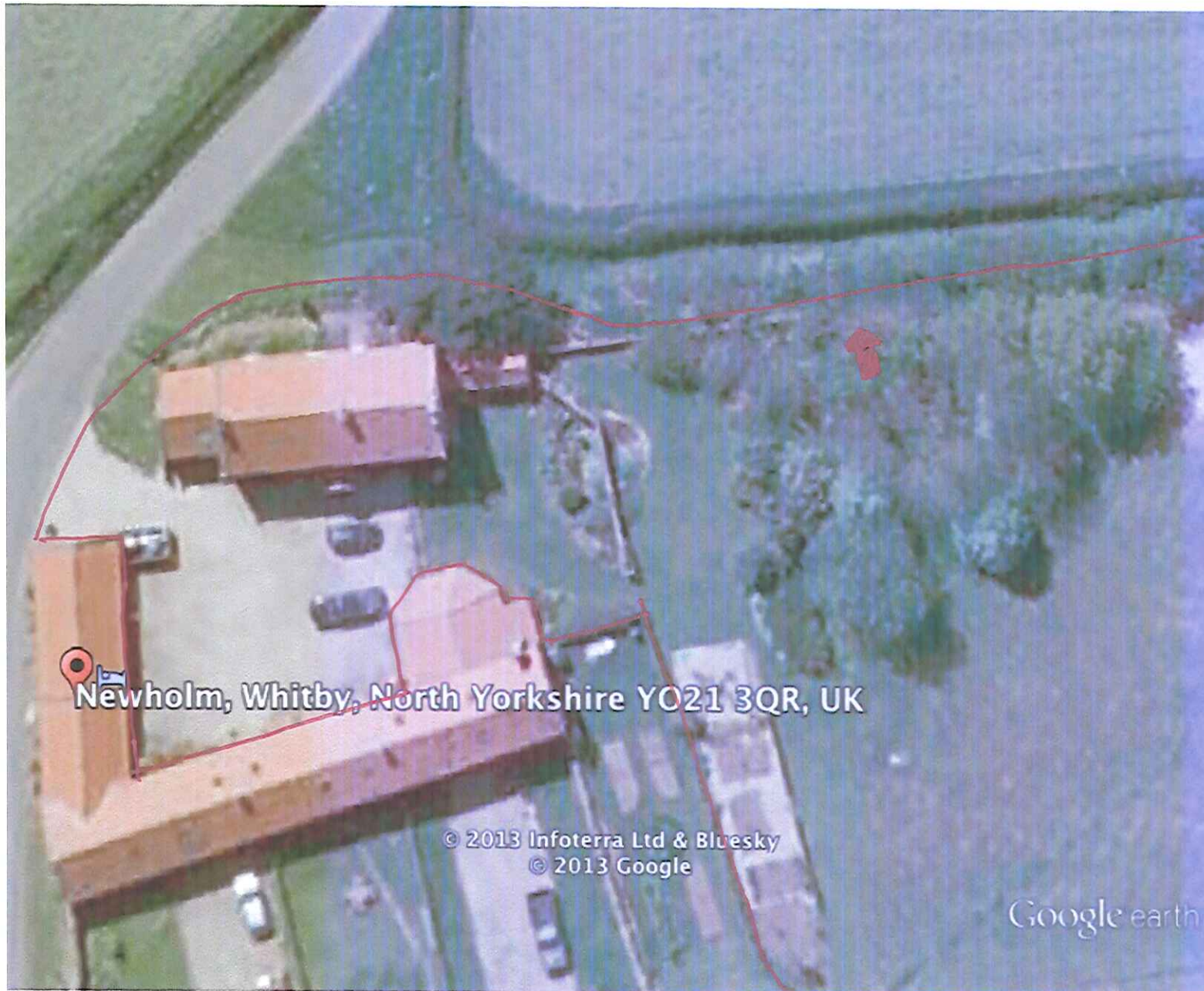
the pillars only need be 300mm high as we will use a flow and return system to get oil in and out of tank . the tanks come painted green

Location of shed



NYMNP
17 OCT 2013

Location of oil tank
will be minimum of 10cm under top of wall



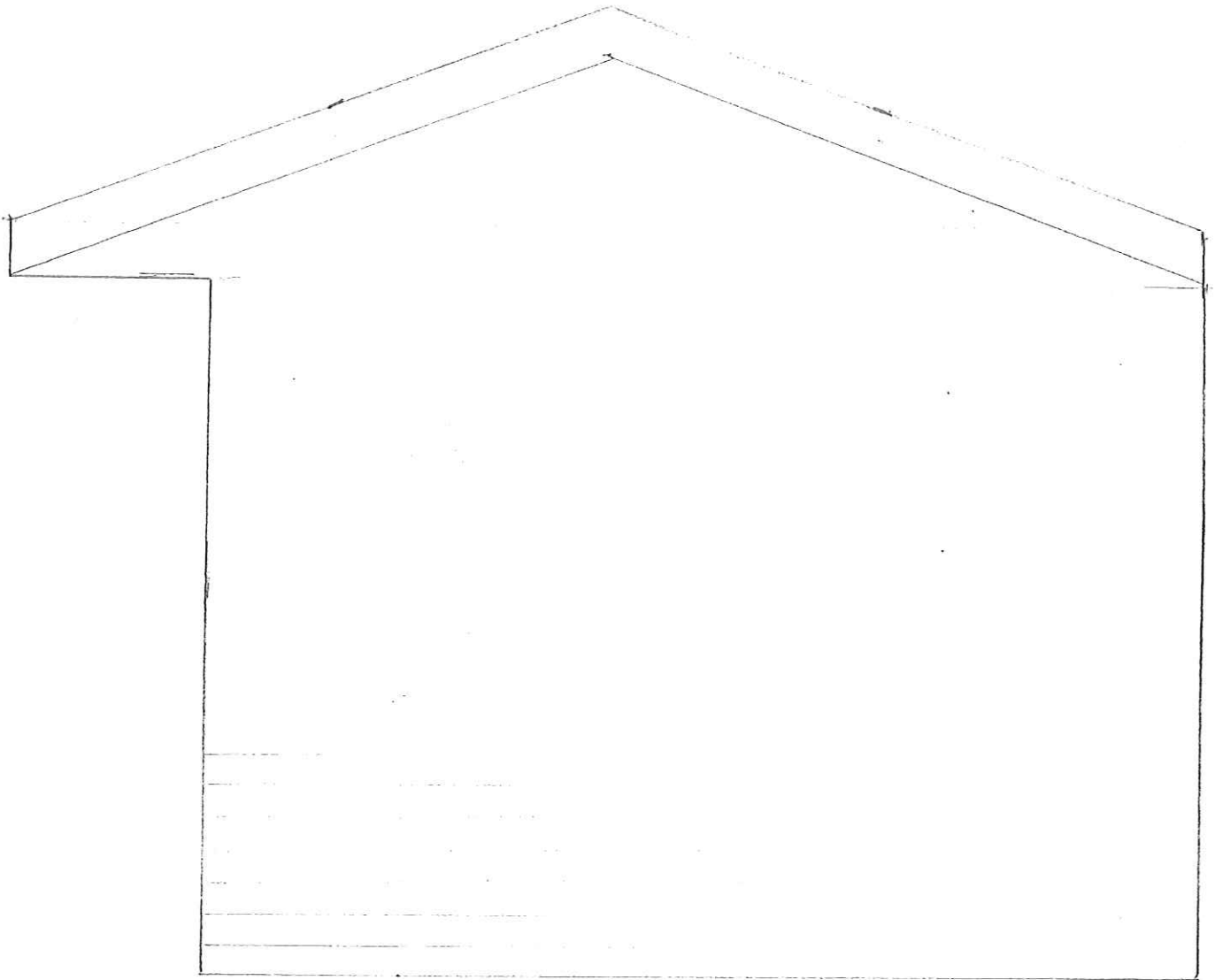
NYM/PA
29 OCT 2013

NYM / 2013 / 0 4 2 4 / F L

Aerial photo of site from google earth before we owned the property. Location of shed within the trees as show by arrow and boundary line shown.

NYM / 2013 / 0 4 2 4 / FL

NYMNDAS
29 OCT 2013



1:20

both sides the same

Graystone Farmhouse / Garden Shed.

Agar Joinery

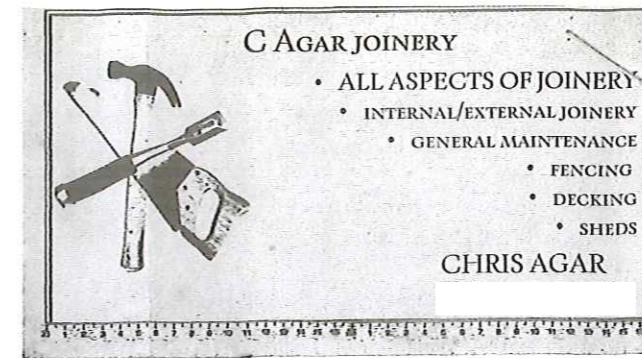
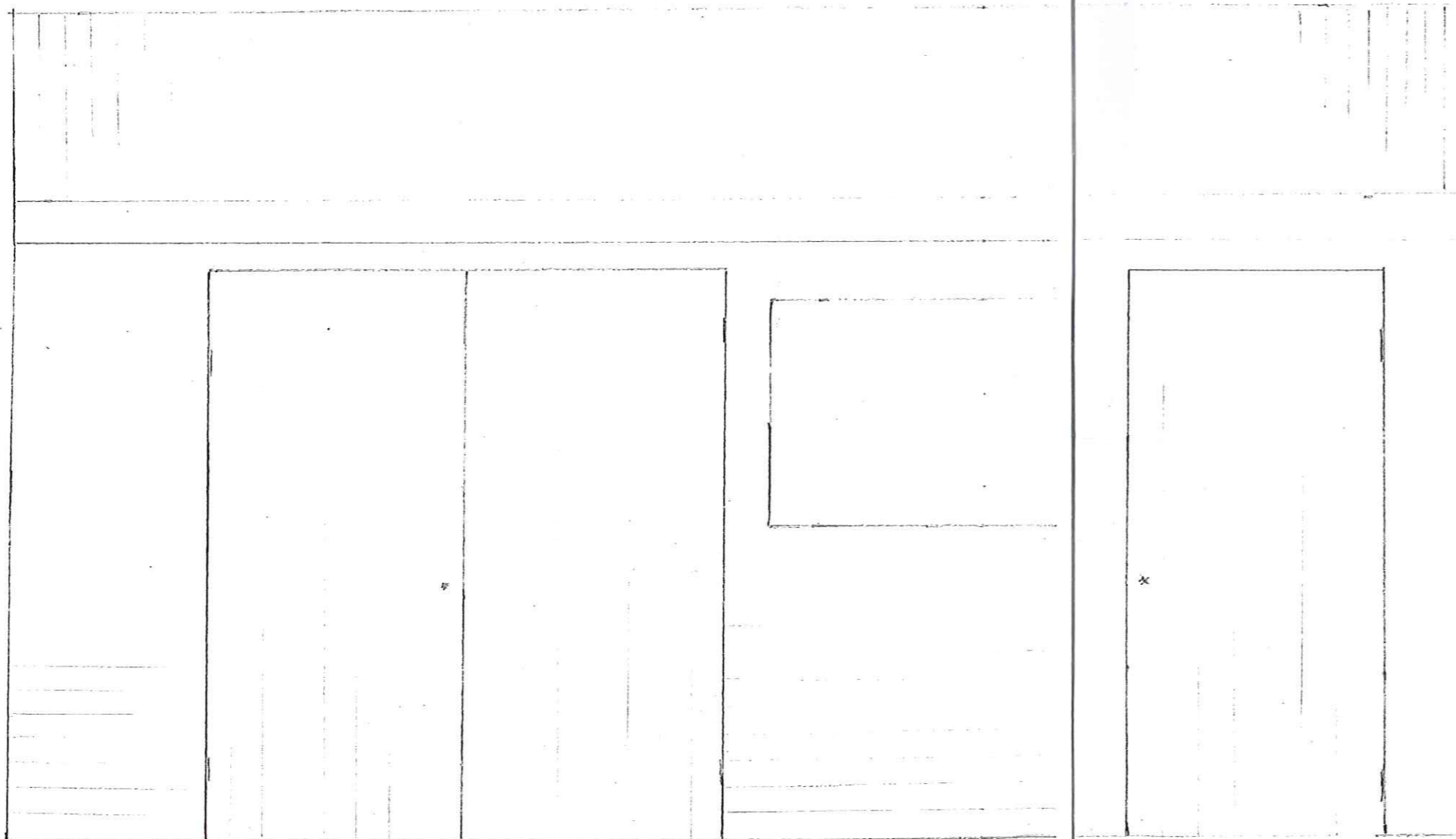
1:20

Ext Materials.

- Brown treated Shiplap 19mm
- Onduline Roof Sheets (black 3mm)
- Onduline Ridge and trims.
- Pine doors
- Perspex window.

NYMNPA
29 OCT 2013

NYM / 2013 / 0424 / FL *



NYMNPA
29 OCT 2013