



**Ebberston Moor - Knapton
Gas Pipeline,
Ebberston,
North Yorkshire**

**STATEMENT OF COMMUNITY
INVOLVEMENT**

August 2013

**BARTON
WILLMORE**
PLANNING/DESIGN/DELIVERY

Final

Statement of Community Involvement

Ebberston Moor A Well Site to Knapton Gas Pipeline,
North Yorkshire

August 2013

Final

Statement of Community Involvement

**Ebberston Moor A Well Site to Knapton Gas Pipeline,
North Yorkshire**

Project Ref:	19819/A5/P5/JB/SO	19819/A5/P5/JB/SO	
Status:	Draft	Final	
Issue/Rev:	6	7	
Date:	August 2013	August 2013	
Prepared by:	Justine Bailey	Justine Bailey	
Checked by:	Paul Foster	Paul Foster	

Barton Willmore
Elizabeth House
1 High Street
Chesterton
Cambridge
CB4 1WB

Tel:
Fax:

Ref: 19819/A5/P5/JB/SO
File Ref: 19819.P5.SOC12.JB
Date: August 2013

COPYRIGHT

The contents of this document must not be copied or reproduced in whole or in part without the written consent of Barton Willmore Planning LLP.

All Barton Willmore stationery is produced using recycled or FSC paper and vegetable oil based inks.

CONTENTS

- 1.0 Introduction
- 2.0 Legislative Background
- 3.0 Pre-Application Stakeholder Consultation
- 4.0 Pre-Application Public Consultation
- 5.0 Conclusion

Appendix 1: Invitations

Appendix 2: Newspaper Advert

Appendix 3: A-Board Sign

Appendix 4: Information Brochure

1.0 INTRODUCTION

1.1 This Statement of Community (SCI) has been prepared by Barton Willmore LLP on behalf of Viking UK Gas Limited (hereby referred to as “the Applicant”) to accompany a planning application submitted to both the North York Moors National Park Authority (NYMNP) and North Yorkshire County Council (NYCC) under the Town and Country Planning Act 1990 as amended by the Planning and Compulsory Purchase Act 2004. The application seeks full planning permission for the exploitation of conventional hydrocarbon resources only for the production of energy, including: gas production from the existing Ebberston Moor ‘A’ Well Site; and construction of a 15.3 km long 8” diameter steel underground pipeline from Ebberston Moor ‘A’ Wellsite to Knapton Generating Station (KGS) for the purpose of delivering natural gas and condensate from Ebberston Moor ‘A’ Wellsite to KGS where it will be used as a fuel-gas to generate power. These activities are collectively referred to hereafter as the “Proposed Development”.

1.2 In summary the Proposed Development which is the second phase of development of the Ebberston Moor gas field aims to carry out the following activities:

- Gas production at the Ebberston Moor ‘A’ Well Site; and
- Construction of an 8” (200 mm) diameter steel underground pipeline from the existing Ebberston Moor ‘A’ Well Site to deliver natural gas and condensate to the KGS at East Knapton where the natural gas will be used as a fuel-gas to generate power.

1.3 Full details of the proposals are set out in the application documentation and accompanying Environmental Statement (ES). This SCI describes the level and nature of community engagement and participation undertaken to date in the preparation of the planning application.

2.0 LEGISLATIVE BACKGROUND

2.1 On the 27 March 2012 the National Planning Policy Framework (NPPF) was published which with the exception of PPS 10 'Planning for Sustainable Waste Management' replaces the majority of Planning Policy Statements. The NPPF states that:

“early engagement has significant potential to improve the efficiency and effectiveness of the planning application system for all parties. Good quality pre-application discussion enables better coordination between public and private resources and improved outcomes for the community”.

2.2 “Planning practice guidance for onshore oil and gas”, published in July 2013, states that pre-application engagement between the operator and other interested parties offers significant potential to improve the efficiency and effectiveness of the planning application system. Working collaboratively and openly with interested parties at an early stage can help identify, understand and seek to resolve issues associated with hydrocarbon development.

2.3 North York Moors National Park Authority (NYMNPA) Statement of Community Involvement (SCI) was adopted in August 2006. The SCI sets out NYMNPA's plans for effective community consultation and how the community should be involved in the process of a planning application. It states:

Pre-Application Discussions:

“For certain schemes which are likely to be contentious or have wider community impacts, the applicant will be expected to undertake more formal pre-application consultation with the local community and stakeholders and submit a supporting statement with any formal application setting out the issues relating to the development, the methods used to consult local people and how the issues raised have been addressed in the proposals. Applicants should hold discussions with the Authority to establish what method and scale of consultation would be appropriate. Such community

consultation is expected for the following types of applications:

- **Development requiring Environmental Impact Assessment which are accompanied by an Environmental Statement;**
- **Proposals which depart from the Development Plan; and**
- **Any development proposals which the Authority thinks will have significant implications for planning policy.**

Where such consultation takes place it should be based on the following methods:

- **Contact with the Parish Council(s);**
- **Public meeting/ display/ exhibition;**
- **Distribution of leaflets to residents; and**
- **Local press coverage”.**

2.4 North Yorkshire County Council (NYCC) Minerals and Waste Plan Statement of Community Involvement (SCI) was adopted in July 2006 and updated in 2013. The SCI sets out the plans of NYCC for effective community involvement in minerals and waste planning across the County. NYCC aims to encourage more people to get involved in the process so that decisions may be balanced and take into account the views of the whole community. It states:

“Early community engagement can help identify new issues, help allay concerns, and allow for amendments to the proposals before formal submissions which can speed up the planning application process.

The Council will encourage prospective applications for major or sensitive development to carry out pre-submission publicity and consultation with the local community. While the methods to be used will be at the discretion of the applicant, the Council will encourage the use of such methods as public meetings, public exhibitions

and presentations, presentations to Parish Councils, leaflet drops and publicity in local media. Applicants are encouraged to take into account any feedback received when finalising their proposals”.

- 2.5 The Applicant undertook public engagement in line with the recommendations outlined above, the detail of which is described in the following section. In summary, invitations were distributed to publicise the date, time and venue of the public exhibition; a private viewing was scheduled for key stakeholders prior to the event opening; and an information brochure was produced summarising the proposals.

3.0 PRE-APPLICATION STAKEHOLDER CONSULTATION

- 3.1 The Applicant is a subsidiary of Third Energy Holdings Limited, an energy company with a comprehensive approach to the development and production of its existing portfolio of gas reserves in the UK. Third Energy Holdings Limited has several wholly owned subsidiaries, Third Energy Limited, and UK Energy Systems. UK Energy Systems Ltd is the owner of the Applicant and RGS Energy Limited (RGS). The Applicant is the 100% licence holder of production, development and exploration licences in North Yorkshire. RGS is the owner of the Knapton Generating Station (KGS) in North Yorkshire.
- 3.2 The Proposed Development is part of a phased approach to the development of Ebberston Moor gas field. The initial phase of development or Ebberston Moor EDS forms a separate planning application (for which planning permission is currently being sought from NYMNPAs) and involves the exploitation of conventional hydrocarbon resources only, for an operational period of up to five years.
- 3.3 This planning application seeks permission for the second phase of the Ebberston Moor gas field development which is anticipated to be carried out after the Ebberston Moor EDS on the condition that planning permission is granted and that reservoir volumes are assessed to be sufficient to support investment in future development of Ebberston Moor gas field, or instead if planning permission is not granted. The details of the Proposed Development are set out in Chapter 1 of this Statement.
- 3.4 The Proposed Development falls within Schedule 2e of the Town and Country Planning (Environmental Impact Assessment) Regulations 2011 as it involves a surface industrial installation for the extraction of natural gas where the area of the development exceeds 0.5 ha. Consequently, it has the potential to have environmental effects and is considered to be Environmental Impact Assessment (EIA) development. The Applicant has therefore prepared an Environmental Statement (ES) which accompanies the application and provide a detailed description of the project and its environmental impacts.
- 3.5 A request for an EIA scoping opinion was submitted to NYCC on 6th February 2012 and the NYMNPAs on 21st March 2012 as per the EIA Regulations and Planning Policy Guidance of Onshore Oil and Gas (DCLG, July 2013). The scoping requests considered that the following environmental issues should be addressed in detail in the ES:
- Ecology;

- Landscape and Views;
- Air Quality;
- Noise and Vibration;
- Transport;
- Flood Risk, Hydrology and Drainage;
- Archaeology and Cultural Heritage;
- Socio Economics; and
- Ground Conditions and Contamination.

3.6 NYCC adopted a scoping opinion on 2nd July 2012; and NYMNPA adopted a scoping opinion on 13th April 2012, both of which generally agreed with the scope set out above.

3.7 In addition, the following organisations were approached as part of the EIA process to identify baseline information to enable the Proposed Development to be refined in relation to environmental issues raised, where appropriate:

- NYCC (various departments);
- NYMNPA (various departments);
- English Heritage;
- Ryedale District Council (RDC) Environmental Health Officers;
- Environment Agency;
- Natural England;
- Forestry Commission;
- Northern Gas Networks;
- Yorkshire Wildlife Trust; and
- Yorkshire Water.

3.8 A key element of the pre-application stakeholder consultation was meeting and engaging with the landowners and tenants on whose land the pipeline is proposed to cross. Bell Ingram was appointed as land agent, on behalf of the Applicant, to identify a potential pipeline route which avoided sensitive landscape, ecological and archaeological areas on land whose owners and tenants were willing in principle to allow access for surveys to determine a route for the gas pipeline to be constructed in return for compensation. An initial route was identified by Bell Ingram in April 2013, and following agreement by the Applicant, access agreements were secured from each of the agents representing the various landowners and tenants.

3.9 As part of the pre-application consultation process, key meetings were held with the Director of Planning and the Head of Development Management at the NYMNPAs on a number of occasions, notably in December 2012, March and July 2013. A meeting was also held in July with the County Councillor for Thornton Dale and the Wolds and the Environmental Health Officer of Ryedale DC. These meetings greatly assisted the Applicant in addressing relevant policies in the supporting planning documentation. Alongside, the pre-application discussions with stakeholders, arrangements were made for a public consultation exercise involving the local community within the vicinity of the Proposed Development. Chapter 4 summarises how the Applicant has engaged with the local community and residents of the area in order to fully explain what is being proposed and to seek their views.

4.0 PRE-APPLICATION PUBLIC CONSULTATION

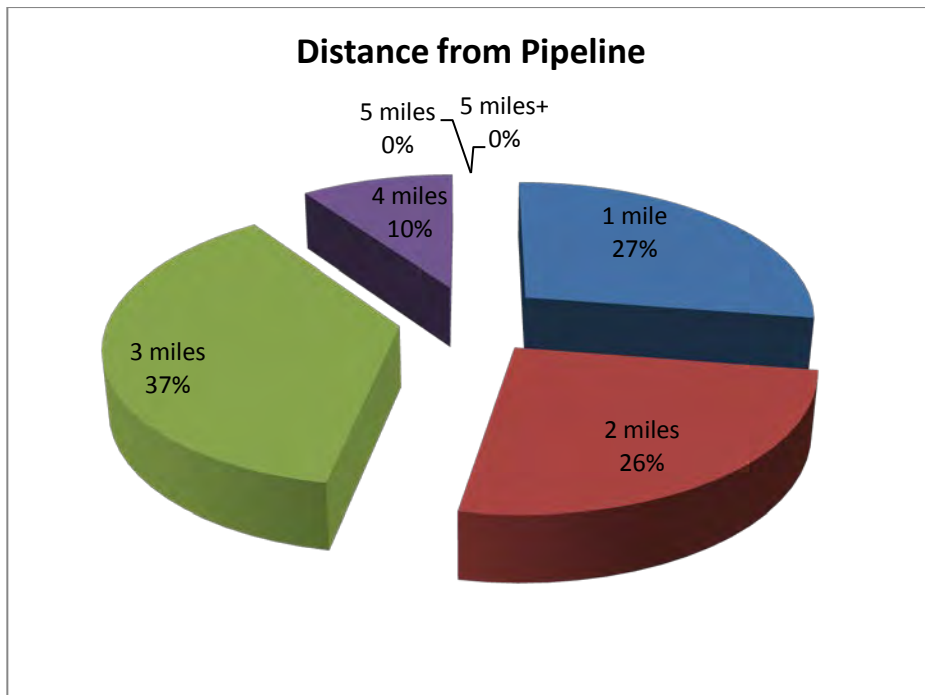
- 4.1 The Applicant undertook a programme of pre-application public consultation in order to inform the local community about the Proposed Development and provide an opportunity for those affected by the proposal to express their concerns and engage directly with company officials.
- 4.2 Two public exhibition events took place, held over two consecutive days, to provide information to the public about the project. The exhibition events were promoted locally through the distribution of invitations (**see Appendix 1**) to some 4060 residents within a 5km radius of the pipeline route. The Applicant also promoted the public exhibition events locally by placing a prominent advert in three newspapers – the Scarborough News, the Malton and Pickering Mercury and the Malton Gazette and Herald (**Appendix 2**). Signs were erected on lamp posts in villages within 5km of the pipeline to promote the public exhibition events, and A-board signs (**Appendix 3**) were placed in prominent positions in the villages where the exhibitions were taking place.
- 4.3 The Applicant also publicised the exhibition events by contacting key local stakeholders via email or phone call which included the local MP, local ward councillors, neighbouring ward councillors, National Park Authority Planning Officers, portfolio holders, the local parish council and all neighbouring parish councils.
- 4.4 The public exhibition events were held at Allerston Village Hall on Thursday 18 July 2013 and at Rillington Church Room on Friday 19 July, both opening at 1.00pm with a private viewing for key stakeholders and opening at 2.00pm to the general public. An information brochure was produced (**see Appendix 4**), to accompany the exhibition events. The brochure was made available for everyone to take away.
- 4.5 In order to make the exhibition events more accessible to the local community, locations were chosen that were the nearest public halls to the northern and southern ends of the pipeline, subject to availability, and were also on a public transport route.
- 4.6 The Applicant provided a number of different forms of information at the exhibition events which included:
- **Exhibition Display** - A display comprising 12 panels outlining the background to the company, details of the Proposed Development and what residents could expect to see during construction and operation;

- **A summary booklet** - containing all the information from the exhibition panels which residents could take away them;
- **Illustrative Photomontages** - detailing the Proposed Development;
- **Maps of the area** - indicating the proposed site and access routes; and
- **Viking UK Gas Ltd Staff** – Viking staff and the planning and EIA consultants were available to answer any questions and expand on information displayed on the panels.

4.7 A total of 62 people registered their attendance at the event in Allerston and 13 people at the Rillington event. Owing to the high footfall at the Allerston event, it was not possible to capture all the attendees' names and, therefore, the actual attendance at Allerston may have been higher. The events were attended by representatives of local parish councils and the County Councillor for the Thornton Dale and the Wolds constituency in which part of the pipeline route falls.

4.8 Those attending the exhibition events were asked to place dots on the chart to give an indication of how far they lived from the Proposed Development site. A map with distance circles at 1 mile intervals was provided to assist attendees in locating where they lived in relation to the proposed pipeline. **Figure 1** below illustrates the results which show that the majority of the attendees at the exhibition events (37%) live 2-3 miles from the Application Site. Figure 1 also shows that 27% of the attendees lived within 1 mile of the site and 26% within 1 and 2 miles. There were no attendees that lived more than 4 miles from the Application Site.

Figure 1 – Distance from the Pipeline



4.9 Photographs of the exhibition are set out below.





4.10 Attendees were also asked to give an indication of the age category they fitted into in order to understand the demographics of those attending the exhibition. Male visitors were given a blue dot and female visitors a red dot. Sticky dots were used in order to make the process of data collection anonymous and fully accessible to those who attended.

4.11 **Figures 2 and 3** show the results of the information collected about the local community at the exhibition events. **Figure 2** illustrates the gender of the exhibition attendees which shows that the majority of attendees were male (65%). **Figure 3** illustrates the age of the attendees which shows that the majority of the attendees (39%) were aged 65+, followed by 56-65 year olds (25%) and 46-55 year olds (24%). **Figure 3** also shows that very few under 26's attended the event (5%), despite the fact that the Allerston event remained open until after 6.30pm in the evening. This may reflect the age profile of residents within the villages.

Figure 2 – Gender

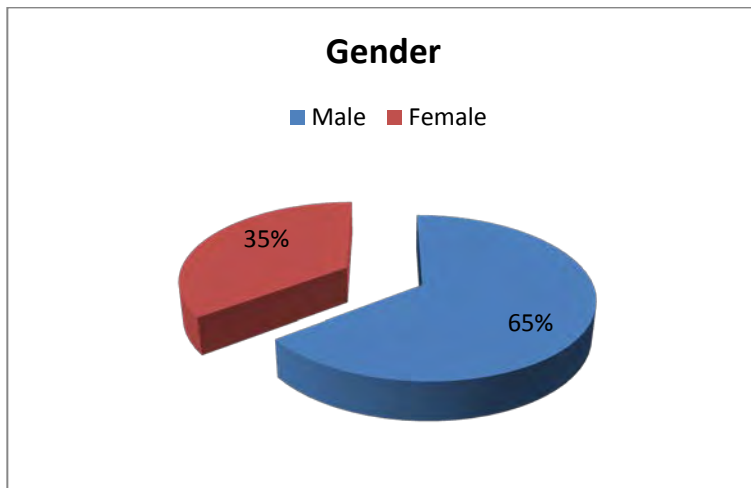
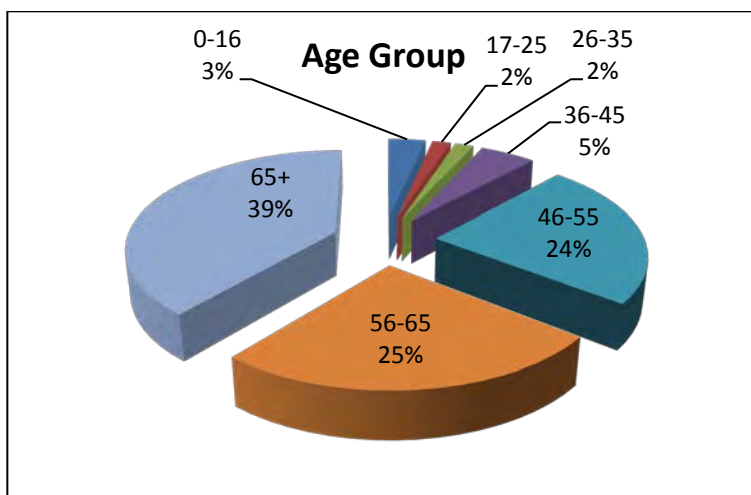


Figure 3 – Age



4.12 During the exhibition events feedback was obtained from the attendees on their views of the exhibition and the proposal itself. Feedback obtained from the residents was largely positive in that they found the exhibition helpful. The vast majority of people attending were supportive of the scheme and attended out of curiosity in order to see how close the proposed pipeline would be to their properties. Very few people expressed any real concerns and only two people said they did not agree with the scheme. However, these objections were that the Applicant should be developing renewable energy instead of carbon-based energy, rather than any objection to the detail of the scheme and the proposed route of the pipeline.

4.13 The specific issues raised during the exhibition were:

- Traffic on Eberston Common Lane and the unsurfaced road near Givendale Head Farm and the recycling centre;

- The potential problems associated with the shortage of passing places along Ebberston Common Lane and the road near Givendale Head Farm;
- The volume of traffic on Ebberston Common Lane which is used for leisure purposes by residents and tourists;
- Increased traffic on the A170; and
- The potential impacts on wildlife during construction.

4.14 Other issues raised by the residents were:

- What is the benefit of the Proposed Development to local communities?
- Whether the local communities could be connected to the mains gas network and whether this is something Viking would undertake as part of the scheme?
- Questions regarding why the development is developing gas and not renewable energy;
- The implications of the Viking UK Gas scheme on the Moorland Energy scheme; and
- The proposed pipeline route and its proximity to local communities.

4.15 The main likes about the project proposals are:

- Safeguarding of up to 30 jobs at the Knapton Generating Station; and
- Energy Security.

4.16 Following the public consultation events in July, the proposed route of the pipeline has been revised slightly as a result of further discussions with landowners.

4.17 From the feedback received at the exhibition the majority stated that they felt they were fully informed about the proposals and appreciated the consultative approach undertaken by the Applicant. The events allowed the attendees to browse the display panels, technical documents and maps, ask questions, as well as take information away to browse.

4.18 In accordance with the key principles outlined in the North Yorkshire County Council and the North York Moors National Park Authority Statements of Community Involvement, the proposal has taken into account the relevant comments in order to finalise the planning application.

4.19 In addition, the Applicant has provided an email address (info@third-energy.com) for the members of the public affected by the Proposed Development to request any further information or to express an opinion.

5.0 CONCLUSION

5.1 This Statement of Community Involvement summarises the background and programme which has been undertaken by the Applicant in connection with the Proposed Development. A comprehensive range of activities has been carried out including:

- Liaison meetings with NYMNPA, the local County Councillor for Thornton Dale and the Wolds, the EHO for Ryedale DC and other statutory consultees;
- Two public exhibition events;
- Media advertising in the local newspapers; and
- Pre-application consultation draft documentation.

5.2 The Applicant has undertaken consultation in which discussions have helped formed the planning application. Once the final application is submitted the Applicant has a statutory to publicise the details of the project and the planning application documentation which will be available for public inspection and comment. The Applicant will also be responding to matters raised by the statutory agencies, the non-statutory bodies, and the public on the details of the Proposed Development planning application as may be necessary.

5.3 In addition to the public consultation that has been undertaken to date, it is anticipated that there will be some continued public interest in the progress of the application.

APPENDIX 1

Invitation

ADVANCE NOTICE PUBLIC INFORMATION DAY



Viking UK Gas Ltd has plans to reappraise the old Ebberston Moor gas field.

Up to the 1970s, Ebberston Moor had a producing gas field known as Lockton (later renamed 'The Ebberston Moor Gas Field'). For the last 40 years, the site has remained dormant. Viking UK Gas Ltd, a local energy company and subsidiary of Third Energy Ltd, now plans to reappraise the gas field in the most appropriate and environmentally sound manner.

Upon development, if the site is proven to have productive potential, it would have an economic benefit to both North Yorkshire and more widely across the UK.

In order to give the local community the chance to comment on and help shape these plans, we are holding a public consultation event prior to submitting a planning application.

The public information day will be held at:

**Allerston Village Hall on
Friday 7th June 2013
between 2pm and 6.30pm**

Management and technical specialists from Viking UK Gas Ltd will be on hand to explain what the work will involve and answer any questions you may have.

Further information is available at
www.third-energy.com/yorkshire-home



APPENDIX 2

Newspaper Advert

ADVANCE NOTICE PUBLIC INFORMATION DAY



Viking UK Gas Ltd has plans to reappraise the old Ebberston Moor gas field.

Up to the 1970s, Ebberston Moor had a producing gas field known as Lockton (later renamed 'The Ebberston Moor Gas Field'). For the last 40 years, the site has remained dormant. Viking UK Gas Ltd, a local energy company and subsidiary of Third Energy Ltd, now plans to reappraise the gas field in the most appropriate and environmentally sound manner.

Upon development, if the site is proven to have productive potential, it would have an economic benefit to both North Yorkshire and more widely across the UK.

In order to give the local community the chance to comment on and help shape these plans, we are holding a public consultation event prior to submitting a planning application.

The public information day will be held at:

**Allerston Village Hall on
Friday 7th June 2013
between 2pm and 6.30pm**

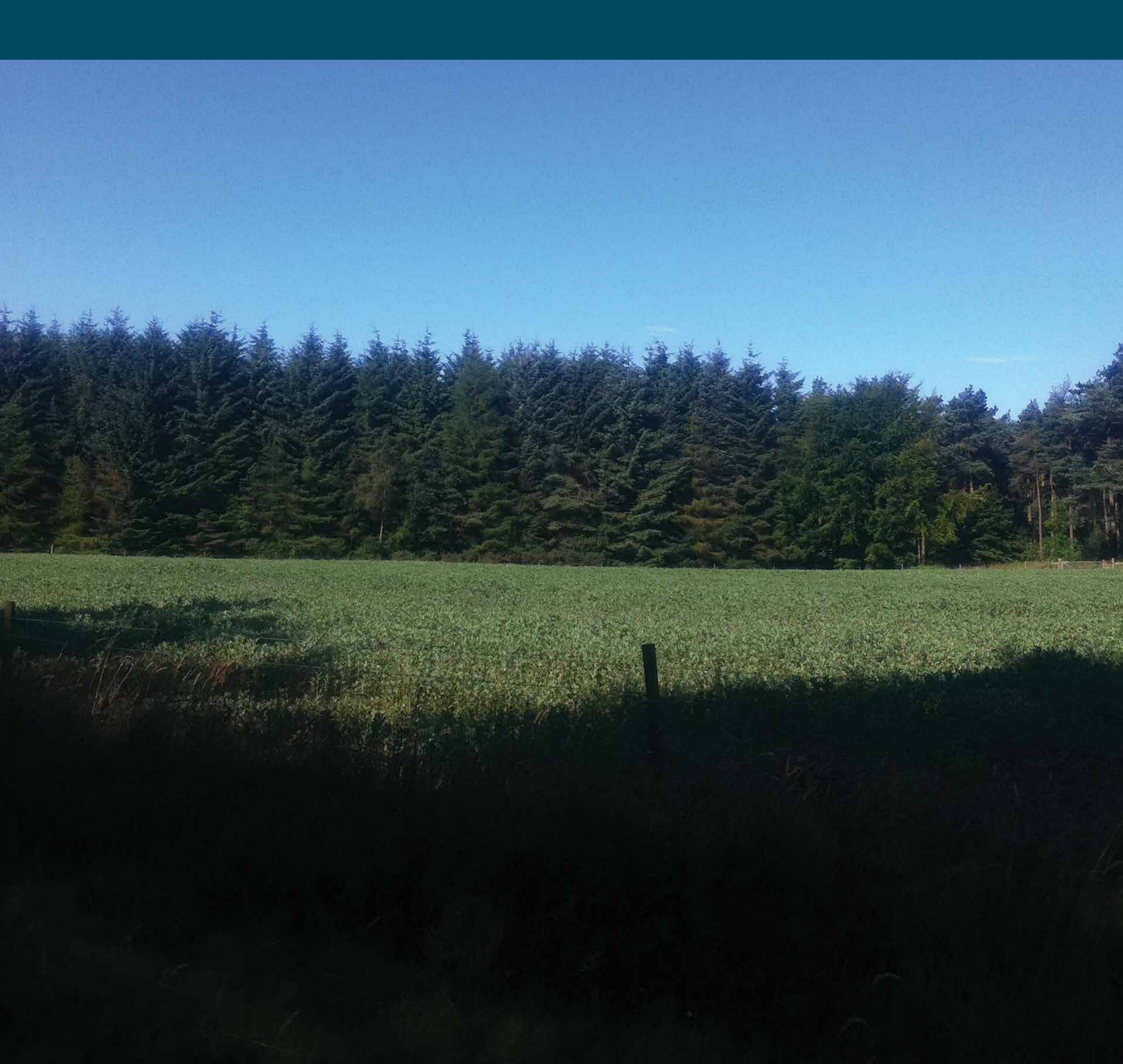
Management and technical specialists from Viking UK Gas Ltd will be on hand to explain what the work will involve and answer any questions you may have.

Further information is available at
www.third-energy.com/yorkshire-home



APPENDIX 3

A-Board Sign



PUBLIC EXHIBITION
HERE TODAY 2PM - 6.30PM



APPENDIX 4

Information Brochure



PUBLIC INFORMATION DAY

Allerston Village Hall
Friday 7th June 2013



WELCOME

Welcome to the Viking UK Gas Ltd consultation event. This exhibition outlines our plans and proposals to install an early development scheme (EDS) to appraise the Ebberston Moor gas field.

This is the second exhibition we have held this year; the first being in Wykeham about our appraisal drilling on Ebberston Moor.

The EDS will have a lifetime of between 3-5 years, and if the field is proven to be economically viable, the EDS will be removed and replaced with a pipeline to the Knapton Generating Station. The EDS will be designed to have minimal environmental impact in the area. This exhibition is aimed at giving local people a better understanding of what we are doing, why we are doing it and what you can expect to see.

We hope you find the exhibition informative, but if you have any questions, or comments please feel free to ask or speak with one of our team members.

ABOUT VIKING UK GAS

Viking UK Gas Ltd has been operating in North Yorkshire for some 20 years and has worked hard to ensure it does so with minimal impact on the local community. It has significant licence acreage in North Yorkshire, including producing fields.

Our assets in North Yorkshire include licences and gas fields in the Vale of Pickering that have been producing gas for a long time. The gas is transferred through underground pipes to the Knapton Generating Station (KGS), which was opened on 22 May 1995. KGS is located near East Knapton on a secluded site which is sheltered by trees on all sides.

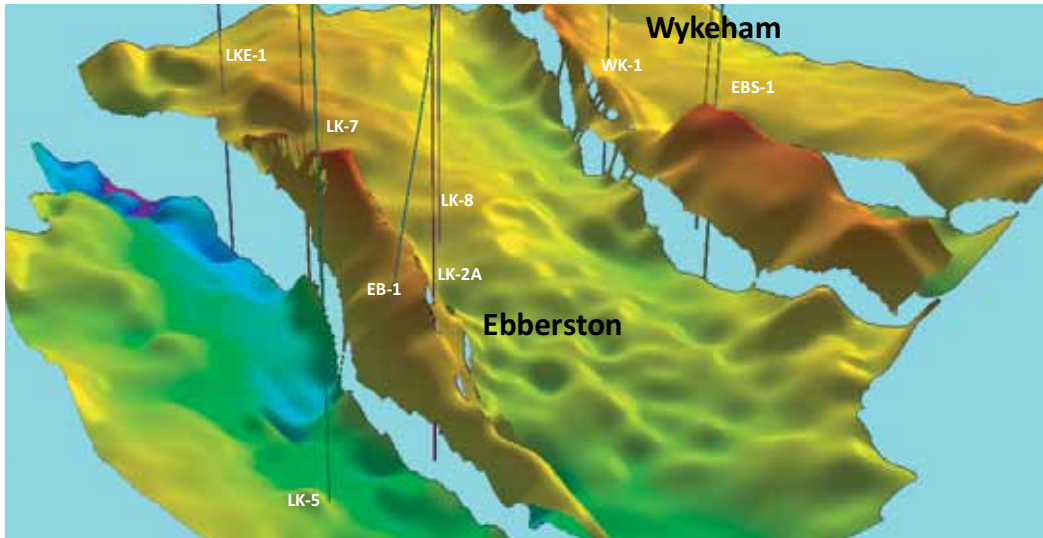
The site passes largely unnoticed by the local community. Viking UK Gas Ltd has an excellent safety and environment record, having operated in the local area without any significant incidents for the last 20 years.

Viking UK Gas Ltd is owned by Third Energy - an energy company with a comprehensive approach to the development and production of existing portfolios.



THE NEED FOR GAS

- Demand for gas in the UK is predicted to continue to rise to meet the greater demand from business and consumers as the economy recovers
- Natural gas is a far cleaner burning and more efficient fuel than coal or oil. Natural gas emits only two thirds as much nitrogen oxides as coal, 57 per cent of the carbon emissions of coal and 70 per cent of the emissions of oil.
- Currently more than two-thirds of the energy used to heat our homes and for cooking comes from gas distributed through the National Grid, and this is unlikely to change for the foreseeable future.
- Britain currently sources just half of its gas supplies from the North Sea and is becoming increasingly reliant on overseas supplies from places like Norway, the Middle East and Russia
- In 2004 the UK became a net importer of oil and gas for the first time. Since then demand has continued to rise with the UK currently importing around one third of its gas. It is anticipated that by 2020 this could increase to 70 per cent or more.
- Energy regulator Ofgem's recently-published Project Discovery report states that while supplies are thought to be secure for the next three years, it has concerns regarding supplies for 2015 onwards
- The report calls for action to deliver secure supplies and environmental objectives at affordable prices, warning that unprecedented levels of investment will need to be sustained over many years
- It is now more important than ever to extract reserves from new sites to ensure that a range of new energy supplies are brought online as soon as possible
- The cost of transporting gas long distances increases the gas price charged to consumers. The greater the quantities imported, the more impact this will have on increased gas prices.



HISTORY OF GAS PRODUCTION IN THE AREA

This area of North Yorkshire has a long history of gas development and production, originally going back to the early 1970s. From the mid-1980s onwards, gas has been produced from the Ryedale Gas Fields. Many of the Ryedale Gas Fields were originally discovered by Taylor Woodrow Exploration Limited and subsequently developed by Kelt UK Limited. Kelt sold its interest in the Ryedale Gas Fields to Tullow Oil. Viking UK Gas Ltd acquired the interests of the Ryedale Gas Fields from Tullow Oil in 2003 and has subsequently undertaken an active drilling and workover programme to enhance gas production from the fields located at Kirby Misperton, Pickering, Marishes and Malton.

In July 2011 Viking UK Gas Limited was acquired by Third Energy. Since acquiring the company, Third Energy has continued to undertake work on the existing wellsites and evaluate the gas fields in the northern part of its licenced acreage, known as Ebberston Moor.

Third Energy is using the latest technology to unlock the potential of these gas fields, creating a boost to the local economy and helping to secure indigenous UK gas supplies.

THE EBBERSTON MOOR GAS FIELD

The Ebberston Moor gas field (originally called Lockton) was discovered in 1966 and produced gas between May 1971 and 1974. Since the 1970s further discoveries of gas have been made in the area.

The interpretation of 3D seismic data acquired over the fields in 2007 was re-interpreted in 2012 which has improved the understanding of the reservoirs' structure. In addition further sub-surface studies have improved the understanding of the reservoirs' behaviour.



EBBERSTON MOOR 'A' WELLSITE AND LOCKTON COMPOUND

The Ebberston Moor 'A' Well site and Lockton Compound are located within the North York Moors National Park, on the eastern edge of Dalby Forest. The site is surrounded to the north, west and south by mature forestry plantation. The eastern boundary of the site is defined by Ebberston Common Lane. To the east of the site and Ebberston Common Lane the land comprises farmland with hedge and fence lined fields used for grazing.

The adjacent 0.25 hectares of the Lockton Compound comprises an area of flat bare ground with a perimeter fencing of approximately 2m high capped with barbed wire. There is also an existing Above Ground Installation (AGI) connection to a Northern Gas Networks (NGN) pipeline that runs between Pickering and Whitby within the Lockton Compound.

This area is separated from Ebberston Common Lane by a corridor of vegetation.



EBBERSTON EARLY DEVELOPMENT SCHEME (EDS) PROPOSAL

In keeping with all prudent development schemes, it is important to monitor the long term production of a field (in case there are any major surprises) to prevent the unnecessary installation of a future pipeline to the Knapton Generating Station.

The EDS will enable an appraisal of the Ebberston Moor reservoir, with the aim of proving reservoir volumes sufficient to support further investment in the field's future development by:

- Re-using the existing well at the Ebberston Moor 'A' wellsite; and
- Connecting to the nearby NGN gas pipeline and facilities for the storage and transport of associated liquids from the existing Ebberston Moor 'A' Wellsite.

The EDS facilities will condition up to 15 million cubic feet per day of produced natural gas and associated hydrocarbon liquids and water. The project will use the existing gas production well on the site as well as other wells that will be tied in. The site will also have the capacity for water injection and production wells to improve reservoir performance. It should be noted that the EDS is a temporary facility (3-5 years) whereupon a pipeline will be installed if the project is still economically viable. Fluids used to condition the gas to achieve the NGN entry specification will be transported and recycled offsite.



RESPECTING THE ENVIRONMENT

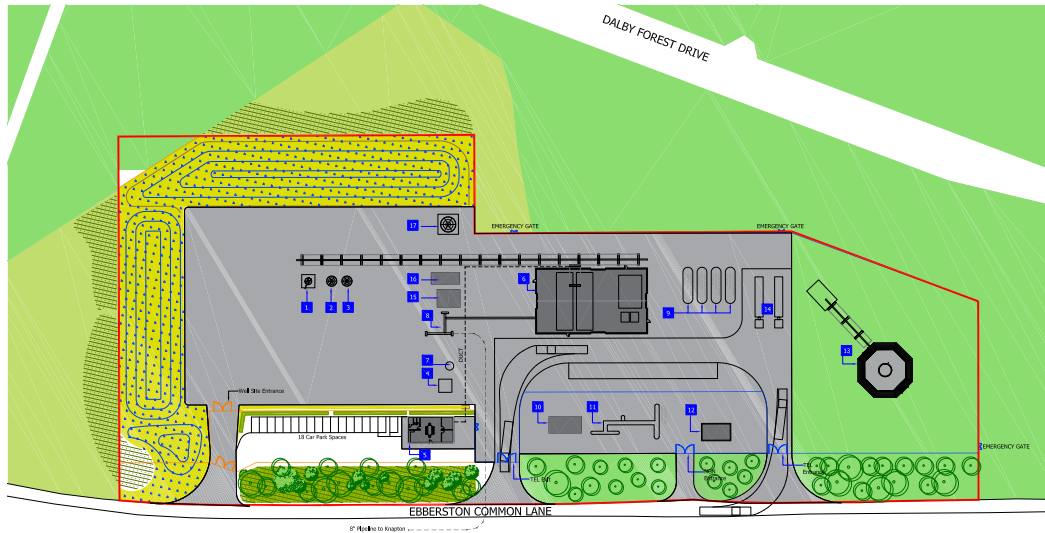
All developments in the North York Moors National Park are strictly controlled by the North York Moors National Park Authority. In addition, the field development plan has to be approved by the Department for Energy and Climate Change. The Environment Agency also plays an important role in providing advice and acceptance to both the North York Moors National Park Authority and the Department for Energy and Climate Change.

An Environmental Statement and an Environmental Risk Assessment have to be conducted prior to the planning submission which requires individual studies on:

- Ecology;
- Landscape and Visual Amenity;
- Air Quality;
- Noise;
- Transport and Traffic;
- Flood Risk, Hydrology and Drainage;
- Archaeology and Cultural Heritage;
- Economics; and
- Ground Conditions and Contamination.

It will also highlight where our proposals will provide potential benefits to the area.

In addition to all of the above, one of the most important parts of the planning process is you – the public. We have invited you here today to listen to your views and help us shape the project. It is your Park, and we want to be good neighbours.



SITE CONSTRUCTION

Site Preparation

Most of the works are temporary and will be removed once the site is completed:

- Site clearance including removal of vegetation surrounding the Wellsite and Lockton Compound where required;
- Construction of a temporary camp for the site workers;
- Construction of a temporary area for equipment storage during the building phase;
- Careful removal and storage of topsoil for later re-instatement;
- Installation of temporary surface water management facilities;
- Creation of a parking area; and
- Workshop facilities for maintaining the construction equipment.

Construction Phase

The construction phase of the EDS will involve the following:

- Foundation excavation and construction;
- Installation of below and above ground services and pipelines;
- Installation of the pre-fabricated modules and buildings
- Landscaping works including soil preparation, tree and vegetation planting and seeding.

Site Access

All construction traffic entering and leaving the Assessment Site will be closely controlled and will enter from the A170 via Eberston Lane and then Eberston Common Lane. Vehicles making deliveries to the Assessment Site or removing spoil material etc. will travel via designated routes, which will have been previously agreed with NYMNPA and other relevant authorities and bodies.

OPERATIONS

Once the site has been constructed and the plant installed, the certified facility will be handed over to the competent staff at the Knapton Generating Station (KGS).

The site will be operated by remote control from the KGS. The staff will be available to respond to alarms and to carry out routine inspection and maintenance on a regular basis. On average, it is anticipated that 2-3 road tankers will arrive every day to deliver new gas fluid treatment and to remove spent fluid for recycling at the providers offsite facility. The most likely location for these sites will be the major generating facilities at Hull and Teesside.

The gas will be delivered to the NGN's pipeline from the connection point on the Lockton Compound. A flare stack will be required on site for emergency operations and to eliminate any minor emissions associated with fluid storage and loading /unloading.

Future Pipeline

The construction of a pipeline from the Eberston Moor 'A' Wellsite to the KGS is in the planning stage. It is being dealt with under a separate planning application for which there will be a separate public consultation. The pipeline will deliver gas directly from Eberston Moor 'A' Wellsite to the Knapton Generating Station.



FREQUENTLY ASKED QUESTIONS:

Q. Why was this location selected?

A. As with any other mineral, gas can only be produced where it is found. The North York Moors contains a gas reserve which could make a significant contribution to the region's energy needs. This exact location was selected due to its proximity to the existing Ebberston Moor A well and the LTZ pipeline.

Q. Moorland Energy has obtained planning permission for gas production at Ebberston and a pipeline to a new processing facility near Thornton-le-Dale. Why can't Third Energy use this instead? Are you duplicating the same infrastructure?

A. Although Moorland has planning permission, there is no certainty that their pipeline and the processing facility will be built. Viking UK Gas Ltd intends to have the EDS producing by mid-2014 and the pipeline between the Ebberston Moor A wellsite and the Knapton Generating Station (KGS) sometime between 2015 and 2017, depending on success of the initial EDS phase. In the future it is hoped to have a pipeline that could transport gas from the Ebberston Moor field and other fields (e.g. Ebberston South) to the Knapton Generating Station for processing and onward shipping to the National Transmission System (NTS).

Q. How has Viking UK Gas Ltd considered the possible environmental impacts?

A. Viking UK Gas Ltd has commissioned the production of an Environmental Statement which includes assessments on ecology, noise, transport, landscape and visual impact, archaeology and cultural heritage, flood risk, hydrology and drainage, ground conditions and contamination and economics.

Q. Does Viking UK Gas Ltd require planning permission to carry out its operations?

A. Viking UK Gas Ltd is required to secure planning permission from the North York Moors National Park Authority under the Town and Country Planning Act 1990. It also requires the Department for Energy and Climate Change to approve the field development plan.

Q. When does Viking UK Gas Ltd expect to be ready to submit a planning application?

A. Viking UK Gas Ltd intends to submit a planning application to the North York Moors National Park Authority in mid-July 2013. The application will be accompanied by an Environmental Statement which describes the proposed development in detail and outlines the likely environmental, social and economic impact upon the National Park and the surrounding area. The Park Authority has a target to determine the planning application within 16 weeks.

Q. How will Viking UK Gas Ltd manage vehicle movements?

A. Viking UK Gas Ltd will implement a traffic management plan during all phases of the development and subsequent operations. This will require all vehicles associated with the proposals to follow specified routes.

Q. What noise will be generated from this development?

A. Noise levels at the nearest sensitive receptors are predicted to be very low so that the impact upon visitors and users of the National Park as well as residents will be negligible and well within approved limits. This will be covered in the Environmental Statement.

Q. What about future developments?

A. Any future development of the site will require a new planning application.

NEXT STEPS

Thank you for attending today's exhibition. We hope you found it informative and helpful.

If you think of anything later on that you wish you had asked us, please email us at:

info@third-energy.com

or write to us at:

General Manager,
Knapton Generating Station,
East Knapton,
N Yorks
YO17 8JF

It would help us log who has attended today if you could place a sticker on each of the charts below:

Male	
Female	
0 - 16	
17 - 25	
26 - 35	
36 - 45	
46 - 55	
56 - 65	
65 +	

Please indicate your home location:

