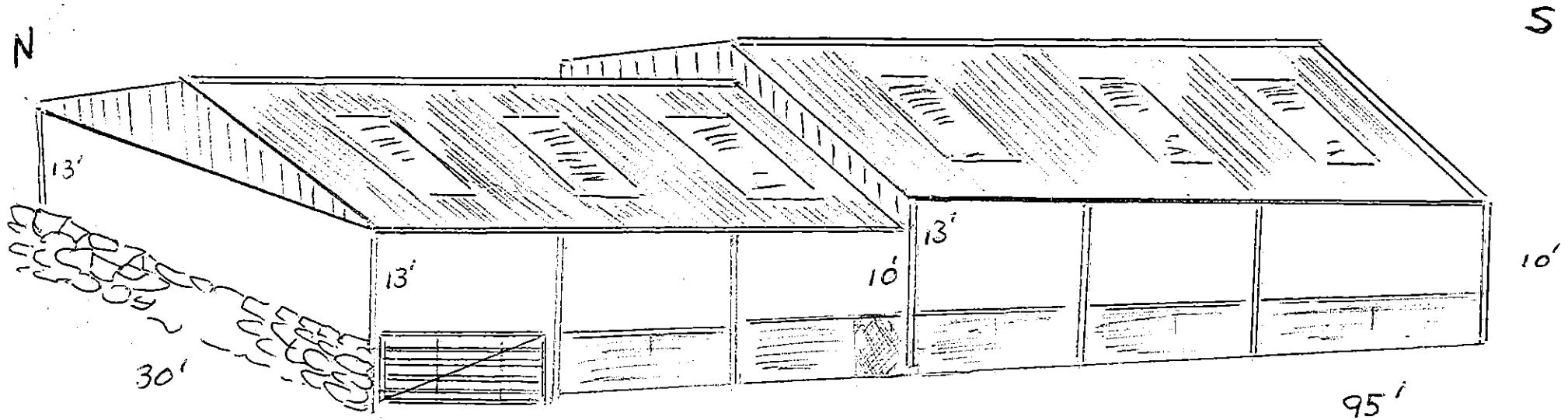


BOTTOM HOUSE FARM

2013

CSF  
GRANT  
APPLICATION



NYMIPA  
24 OCT 2013

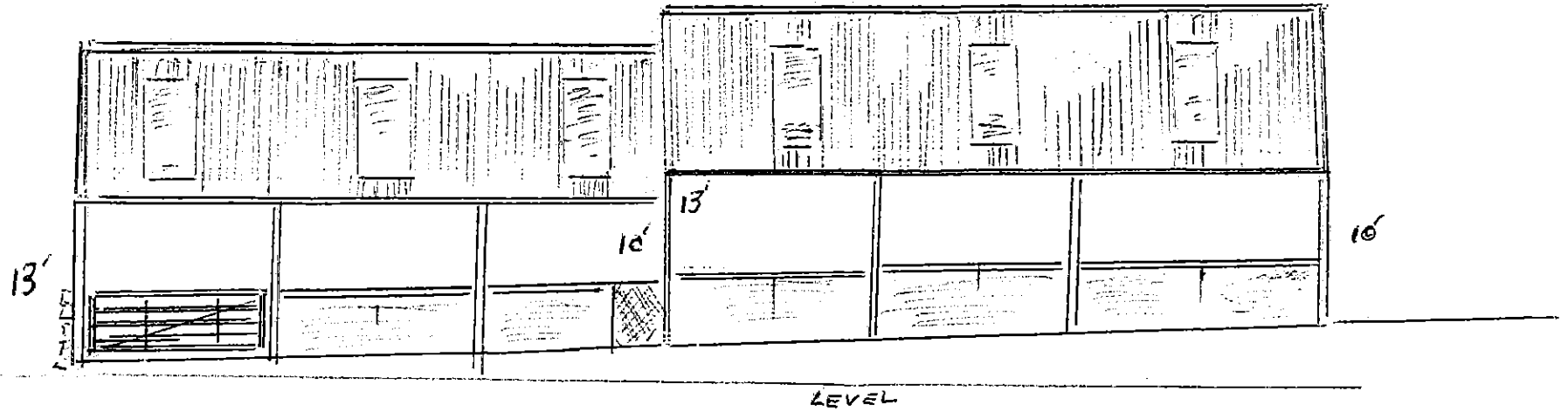
PROPOSED COVERING  
OF EXISTING SHEEP  
HANDLING SYSTEM.

STEEL PORTAL FRAME 95' x 30'  
CEMENT FIBRE ROOF, CLADDING TO EYES - YORKSHIRE BOARDS  
WITH ROOF LIGHTS.

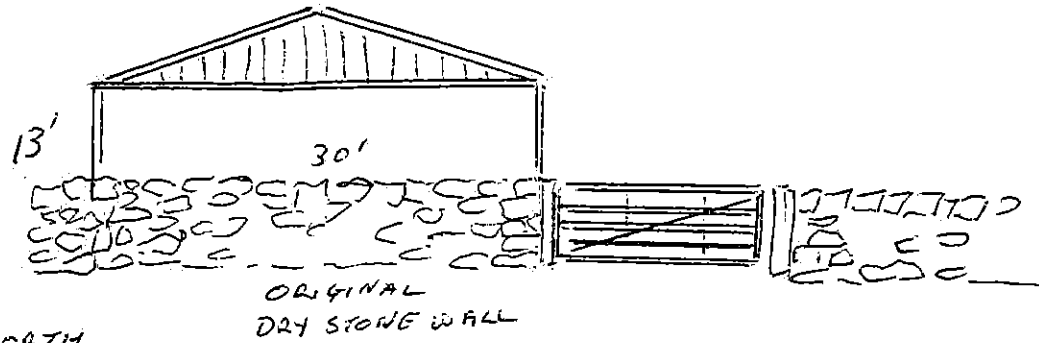
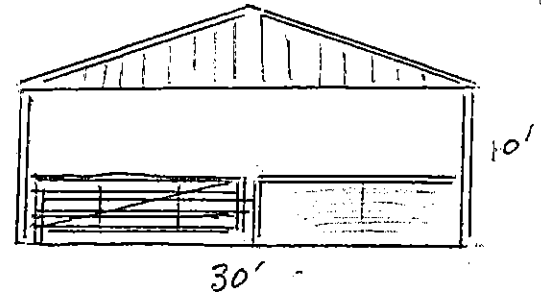
SKETCH (NOT TO SCALE)

N

S



SOUTH ELEVATION



NORTH ELEVATION

NYMANIPA  
24 OCT 2013

(SKETCH NOT TO SCALE)