





Station Lane Condition (98)



Station Lane Condition (99)



Station Lane Condition (100)



Station Lane Condition (101)



Station Lane Condition (102)



Station Lane Condition (103)



Station Lane Condition (104)



Station Lane Condition (105)



Station Lane Condition (106)



Station Lane Condition (107)



Station Lane Condition (108)



Station Lane Condition (109)



Station Lane Condition (110)



Station Lane Condition (111)



Station Lane Condition (112)



Station Lane Condition (113)



Station Lane Condition (114)



Station Lane Condition (115)



Station Lane Condition (116)



Station Lane Condition (117)



Station Lane Condition (118)



Station Lane Condition (119)



Station Lane Condition (120)



Station Lane Condition (121)



Station Lane Condition (122)



Station Lane Condition (123)



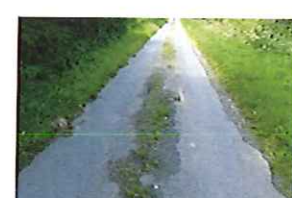
Station Lane Condition (124)



Station Lane Condition (125)



Station Lane Condition (126)



Station Lane Condition (127)



Station Lane Condition (128)



Station Lane Condition (129)



Station Lane Condition (130)



Station Lane Condition (131)



Station Lane Condition (132)

NYM / 0538 / CVC

NYM / 2014 / 0538 / CVC



Station Lane Condition (335)



Station Lane Condition (336)



Station Lane Condition (337)



Station Lane Condition (338)



Station Lane Condition (339)



Station Lane Condition (340)



Station Lane Condition (341)



Station Lane Condition (342)



Station Lane Condition (1)



Station Lane Condition (2)



Station Lane Condition (3)



Station Lane Condition (4)



Station Lane Condition (5)



Station Lane Condition (6)



Station Lane Condition (7)



Station Lane Condition (8)



Station Lane Condition (9)



Station Lane Condition (10)



Station Lane Condition (11)



Station Lane Condition (12)



Station Lane Condition (13)



Station Lane Condition (14)



Station Lane Condition (15)



Station Lane Condition (16)



Station Lane Condition (17)



Station Lane Condition (18)



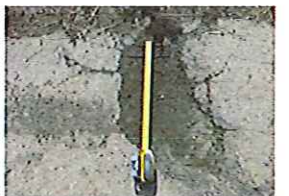
Station Lane Condition (19)



Station Lane Condition (20)



Station Lane Condition (21)



Station Lane Condition (22)



Station Lane Condition (23)



Station Lane Condition (24)



Station Lane Condition (25)



Station Lane Condition (26)



Station Lane Condition (27)



Station Lane Condition (28)



Station Lane Condition (29)



Station Lane Condition (30)



Station Lane Condition (31)



Station Lane Condition (32)



Station Lane Condition (33)



Station Lane Condition (34)



Station Lane Condition (35)



Station Lane Condition (36)



Station Lane Condition (37)



Station Lane Condition (38)



Station Lane Condition (39)



Station Lane Condition (40)



Station Lane Condition (41)



Station Lane Condition (42)



Station Lane Condition (43)



Station Lane Condition (44)



Station Lane Condition (45)



Station Lane Condition (46)



Station Lane Condition (47)



Station Lane Condition (48)



Station Lane Condition (49)



Station Lane Condition (50)



Station Lane Condition (51)



Station Lane Condition (52)



Station Lane Condition (53)



Station Lane Condition (54)



Station Lane Condition (55)



Station Lane Condition (56)



Station Lane Condition (57)



Station Lane Condition (58)



Station Lane Condition (59)



Station Lane Condition (60)



Station Lane Condition (61)



Station Lane Condition (62)

NYM / 2014 / 0538 / CVC





Station Lane Condition (168)



Station Lane Condition (169)



Station Lane Condition (170)



Station Lane Condition (171)



Station Lane Condition (172)



Station Lane Condition (173)



Station Lane Condition (174)



Station Lane Condition (175)



Station Lane Condition (176)



Station Lane Condition (177)



Station Lane Condition (178)



Station Lane Condition (179)



Station Lane Condition (180)



Station Lane Condition (181)



Station Lane Condition (182)



Station Lane Condition (183)



Station Lane Condition (184)



Station Lane Condition (185)



Station Lane Condition (186)



Station Lane Condition (187)



Station Lane Condition (188)



Station Lane Condition (189)



Station Lane Condition (190)



Station Lane Condition (191)



Station Lane Condition (192)



Station Lane Condition (193)



Station Lane Condition (194)



Station Lane Condition (195)



Station Lane Condition (196)



Station Lane Condition (197)



Station Lane Condition (198)



Station Lane Condition (199)



Station Lane Condition (200)



Station Lane Condition (201)



Station Lane Condition (202)

NYM / 2014 / 0538 / CVR

NYM / 2014 / n 538 / CVC



Station Lane Condition (203)



Station Lane Condition (204)



Station Lane Condition (205)



Station Lane Condition (206)



Station Lane Condition (207)



Station Lane Condition (208)



Station Lane Condition (209)



Station Lane Condition (210)



Station Lane Condition (211)



Station Lane Condition (212)



Station Lane Condition (213)



Station Lane Condition (214)



Station Lane Condition (215)



Station Lane Condition (216)



Station Lane Condition (217)



Station Lane Condition (218)



Station Lane Condition (219)



Station Lane Condition (220)



Station Lane Condition (221)



Station Lane Condition (222)



Station Lane Condition (223)



Station Lane Condition (224)



Station Lane Condition (225)



Station Lane Condition (226)



Station Lane Condition (227)



Station Lane Condition (228)



Station Lane Condition (229)



Station Lane Condition (230)



Station Lane Condition (231)



Station Lane Condition (232)



Station Lane Condition (233)



Station Lane Condition (234)



Station Lane Condition (235)



Station Lane Condition (236)



Station Lane Condition (237)







