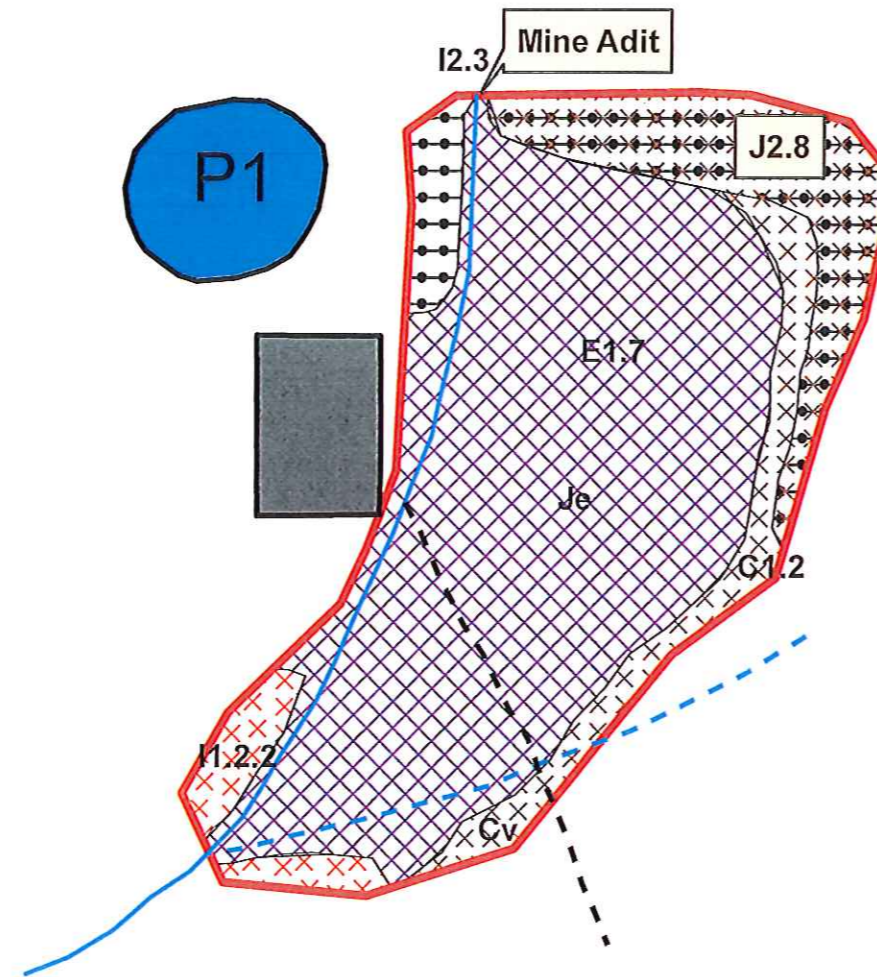


Proposed Remediation Wetland
Silhowe, Goathland, North Yorkshire



19 DEC 2014

Legend

Site Boundary

Phase 1 habitat type

Bracken - scattered

Earth bank

Wet modified bog

Scree - basic

Pond

Linear features

Dry ditch

Running water

Path

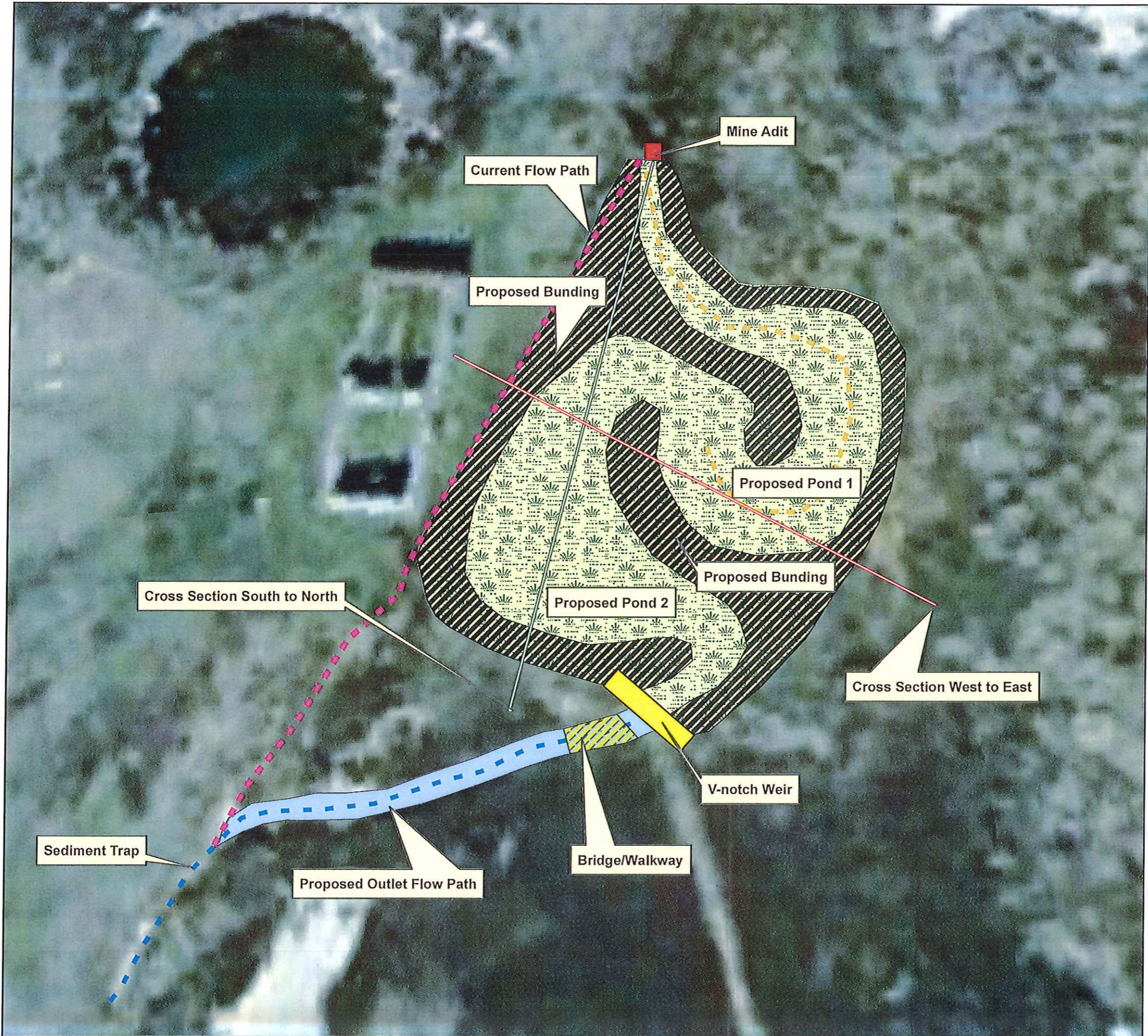
Building

PHASE 1 PLAN



Figure 3

**Proposed Mine Remediation Wetland
Silhowe, Goathland, North Yorkshire**



Legend

-  Proposed wetland area
-  Mine adit
-  V-notch weir
-  Topography South to North
-  Topography Section West to East
-  Drainage (Present)
-  Proposed Flow path
-  Proposed Outflow from Wetland
-  Existing Drainage Channel
-  Bridge/Walkway
-  Bunding

11/5
 19 DEC 2014

WETLAND PROPOSALS PLAN

06/12/2014



Figure 4