

NYM / 2014 / U 8 5 6 7 LB

# Mowthorpe Bridge, Everley near Scarborough

## Core Sampling

For Ringway

May 2014

NYM 05  
22 DEC 2014



**RAM Services Limited**  
Structural Survey, Investigation and Repair  
[www.ramservices.co.uk](http://www.ramservices.co.uk)



**Mowthorpe Bridge  
Core Sampling Works**

**Table of contents**

**CORE SAMPLE DETAILS .....4**

**PHOTOGRAPHS.....5**

**BRIDGE PHOTOGRAPHS SHOWING CORE LOCATIONS.....12**

Report compiled by

N K Dymott

Report date - 13 May 2014

Ram Services Limited  
 Holyoake House  
 240-244 Lowerhouse Lane  
 Burnley, Lancashire BB12 6NG

NYM/14/0856  
 22 DEC 2014





**MOWTHORP BRIDGE, EVERLEY, NEAR SCARBOROUGH  
EXPLORATORY CORES & TRIAL PITS  
SCHEDULE OF EXPLORATORY CORES (Rev. A dated  
12.2.14)**

Core Ref No.	Location of Core	Reference Photograph Number	Diameter of Core (mm)	Estimated Length of Core (mm)	Cumulative Total Core Lengths
1	Northern Span West Elevation Northern Spandrel Wall	3	50	450 (Was 600)	Super-structure = <b>4.8m</b>  (Was 9.6m)
2	Northern Span West Elevation Northern Section of Arch Ring	3	50	600 (Was 2000)	
3	Northern Span West Elevation Southern Spandrel Wall	3	50	450 (Was 600)	
4	West Elevation Column over Pier Cutwater	3	50	450 (Was 1000)	
5	Southern Span West Elevation Northern Spandrel Wall	3	50	450 (Was 600)	
6	Southern Span West Elevation Southern Spandrel Wall	3	50	450 (Was 600)	
7	Southern Span East Elevation Southern Spandrel Wall	4	50	450 (Was 600)	
8	Southern Span East Elevation Southern Section of Arch Ring	4	50	600 (Was 2000)	
9	Southern Span East Elevation Northern Spandrel Wall	4	50	450 (Was 600)	
10	Northern Span West Elevation Column over Pier Cutwater	4	50	450 (Was 1000)	
11	South West Wing Wall Top	5	50	450 (Was 900)	Wing Walls = <b>4.2m</b>  (Was 9.6m)
12	South West Wing Wall Bottom	5	50	600 (Was 1500)	
13	North West Wing Wall Top	6	50	450 (Was 900)	
14	North West Wing Wall Bottom	6	50	600 (Was 1500)	
15	North East Wing Wall Top	7	50	450 (Was 900)	
16	North East Wing Wall Bottom	7	50	600 (Was 1500)	
17	South East Wing Wall Top	8	50	450 (Was 900)	
18	South East Wing Wall Bottom	8	50	600 (Was 1500)	

Original Schedule prepared by Phil Clark, Project Manager Structures, Jacobs UK Ltd on 4 November 2013.



**Core sample details**

Core ref	Description	Cumulative length
4953/01	Fine aggregate concrete well compacted	200mm
4953/02	Fine aggregate concrete well compacted	600mm
4953/03	Fine aggregate concrete well compacted	300mm
4953/04	Fine aggregate concrete well compacted	250mm
4953/05	Fine aggregate concrete well compacted	200mm
4953/06	Fine aggregate concrete well compacted	250mm
4953/07	Mixed aggregate size concrete well compacted	600mm
4953/08	Mixed aggregate size concrete well compacted	500mm
4953/09	Fine aggregate concrete well compacted	550mm
4953/10	Fine aggregate concrete well compacted	350mm
4953/11	Coarse aggregate concrete well compacted	550mm
4953/12	?? aggregate concrete well compacted. Clay beyond 350mm	350mm
4953/13	Fine aggregate concrete to 100mm. Coarse aggregate concrete, voided / fragmented 100 – 300mm	300mm
4953/14	Fine aggregate concrete well compacted towards ends with extensive small voids in centre	450mm
4953/15	Coarse aggregate concrete with variable compaction	500mm
4953/16	Core sample missing	
4953/17	Solid sandstone to 300mm deep, coarse aggregate concrete well compacted beyond	550mm
4953/18	Coarse aggregate concrete well compacted	600mm

See photographs appended below.

Additional details of core sampling recorded by Jacobs staff on site.

NYMNP  
 22 DEC 2014





**Mowthorpe Bridge  
Core Sampling Works**

---

**Photographs**



NYM/14  
22 DEC 2014





Photo 1 - Core samples 1 - 4

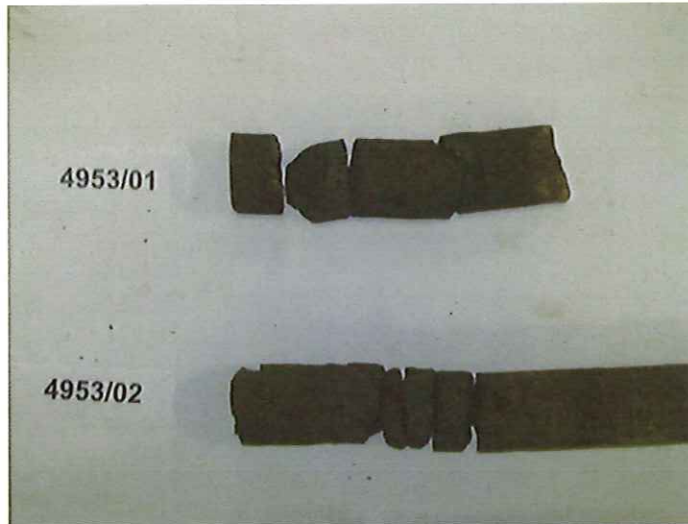


Photo 2 - Detail of core samples 1 - 2



Photo 3 - Detail of core samples 4 - 4

NYM/NIPA  
22 DEC 2014





Photo 4 - Core samples 5 – 9



Photo 5 - Detail of core samples 5 - 6



Photo 6 - Detail of core samples 7 - 8







Photo 7 - Detail of core samples 7 - 8



Photo 8 - Detail of core samples 8 - 9



Photo 9 - Detail of core samples 8 - 9

NYMIRA  
22 DEC 2014







Photo 10 - Core samples 10 - 13

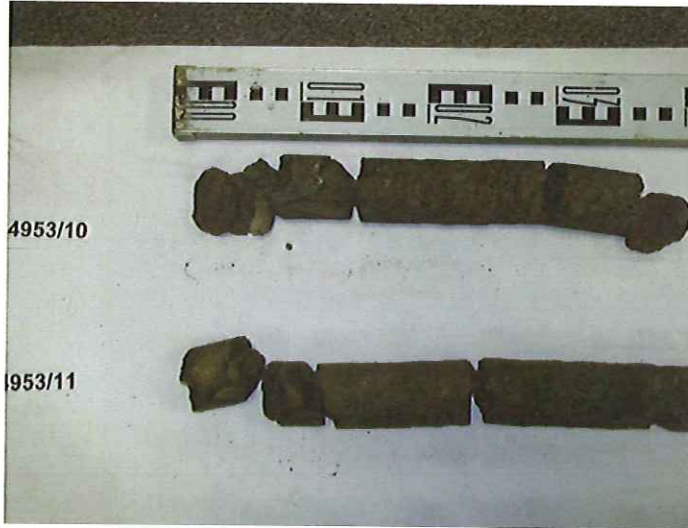


Photo 11 - Detail of core samples 10 - 11



Photo 12 - Detail of core samples 12 - 13



Mowthorpe Bridge  
Core Sampling Works



Photo 13 - Core samples 14 - 17



Photo 14 - Detail of core samples 14 - 15 (core 16 missing)



Photo 15 - Detail of core samples 14 - 15

NYM/NPA  
22 DEC 2014







NYM/2014  
22 DEC 2014

Photo 16 - Core samples 17 - 18 (core 16 missing)



Photo 17 - Detail of core samples 17 - 18

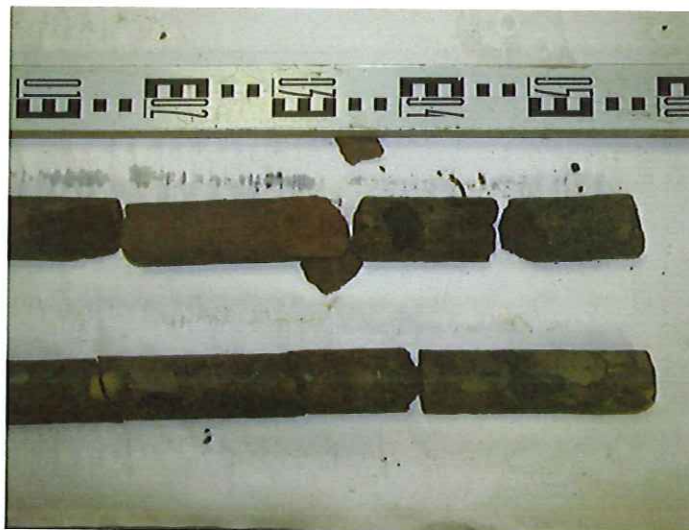


Photo 18 - Detail of core samples 17 - 18



**Mowthorpe Bridge  
Core Sampling Works**

---

NYM / 2014 / 0856 / LB

**Bridge photographs showing core locations**



NYM/NPA  
22 DEC 2014





1943 Mowthorp Bridge, Everley, near Scarborough  
Proposed Advanced Exploratory Works - Photographs



Photograph 1: View across bridge from south. Note narrow carriageway width at centre of bridge (4.6m approx.) and poor alignment.



Photograph 2: View across bridge from north. Note narrow carriageway width at centre of bridge (4.6m approx.) and poor alignment.





Photograph 3: West upstream elevation. Vegetation clearance from NW corner and from pier. Cores required in indicative locations as shown.



Photograph 4: East downstream elevation. Vegetation clearance required from NE corner. Cores required in indicative locations as shown.

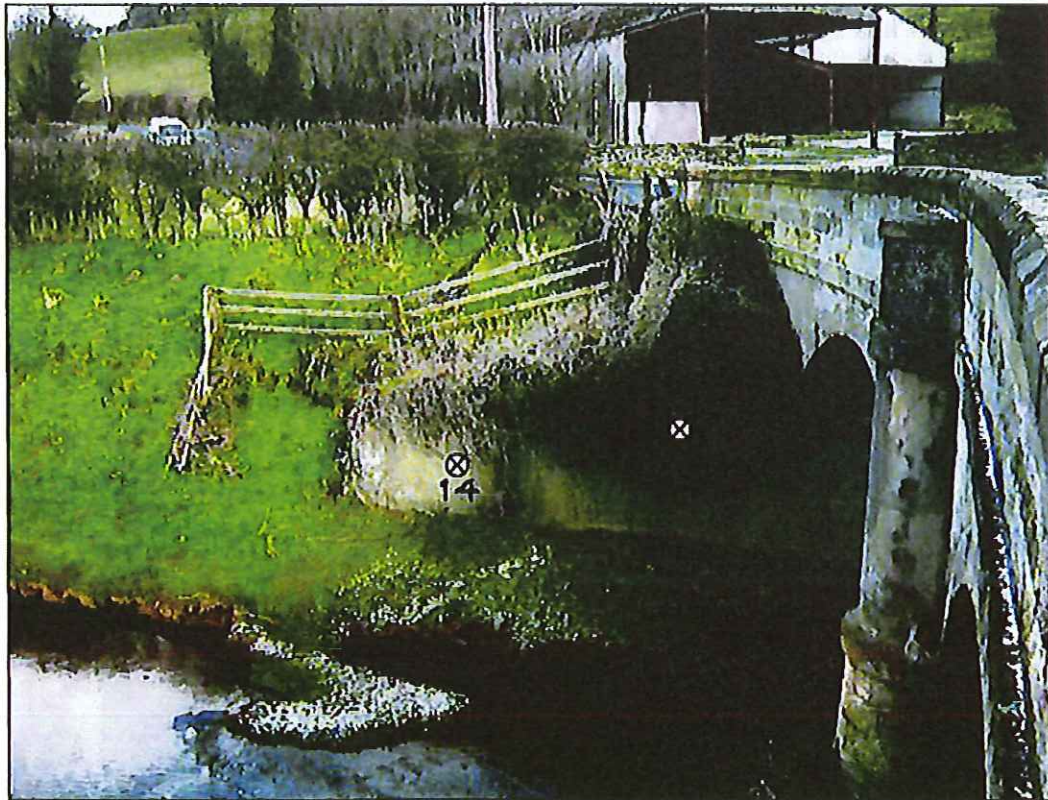
NVMNPA  
22 DEC 2014





NYM/14/0856/LB/7  
22 DEC 2014

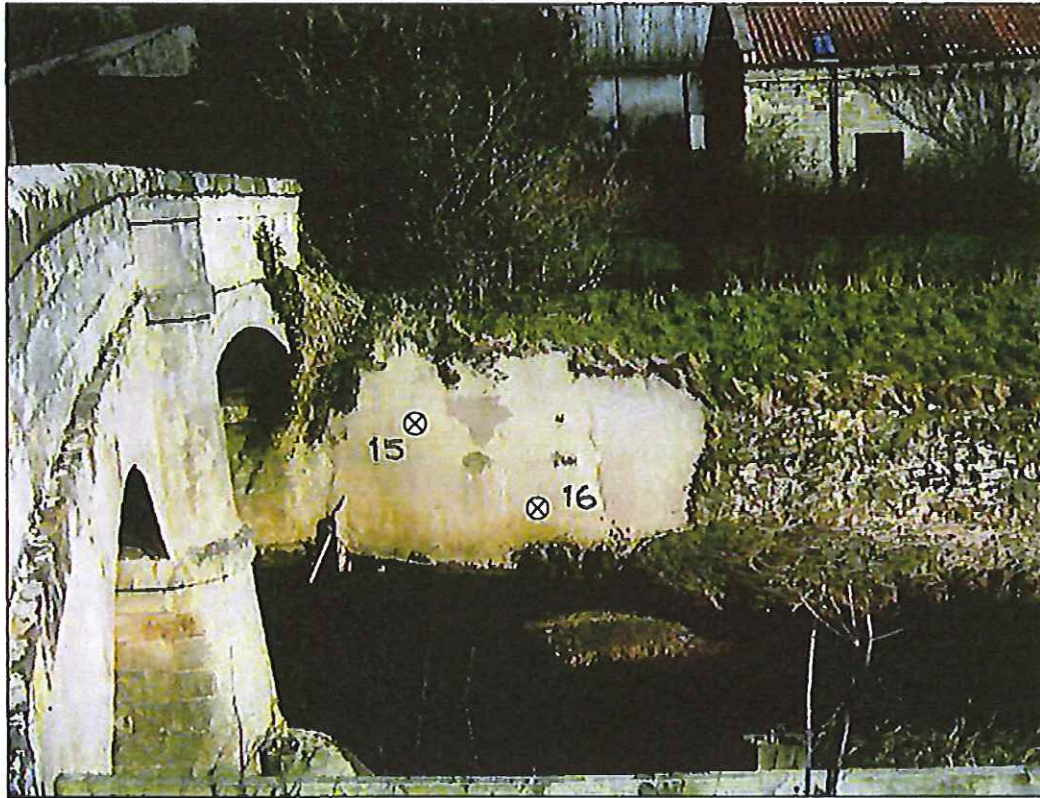
Photograph 5:	South west wing wall. Cores required in indicative locations as shown.
---------------	--



Photograph 6:	North west wing wall. Vegetation clearance required from above wall. Cores required in indicative locations as shown.
---------------	---



1943 Mowthorp Bridge, Everley, near Scarborough  
Proposed Advanced Exploratory Works - Photographs



Photograph 7: North east wing wall. Vegetation clearance required from above wall. Cores required in indicative locations as shown.



Photograph 8: South east wing wall. Cores required in indicative locations as shown.

NYM/PA  
22 DEC 2014