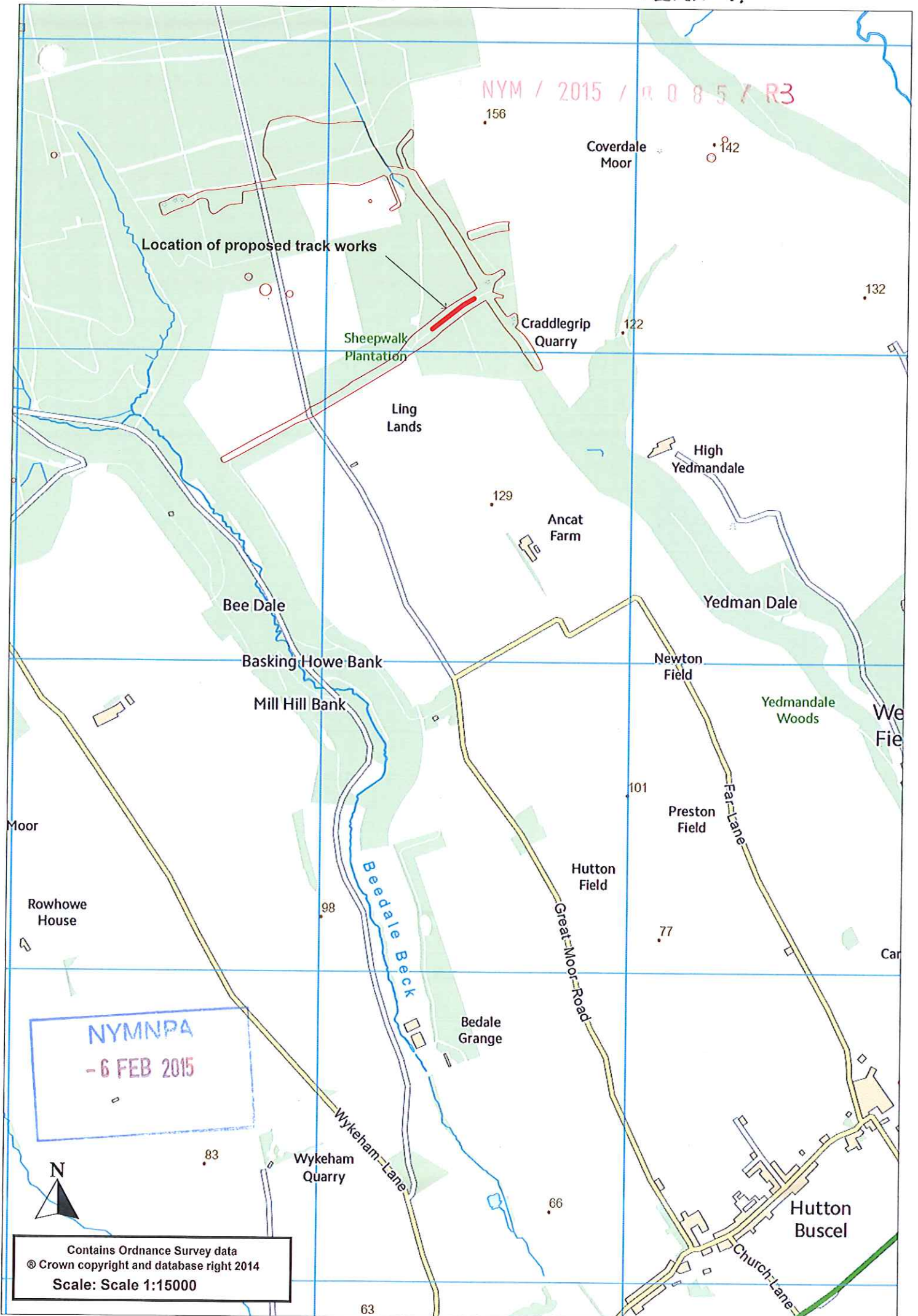
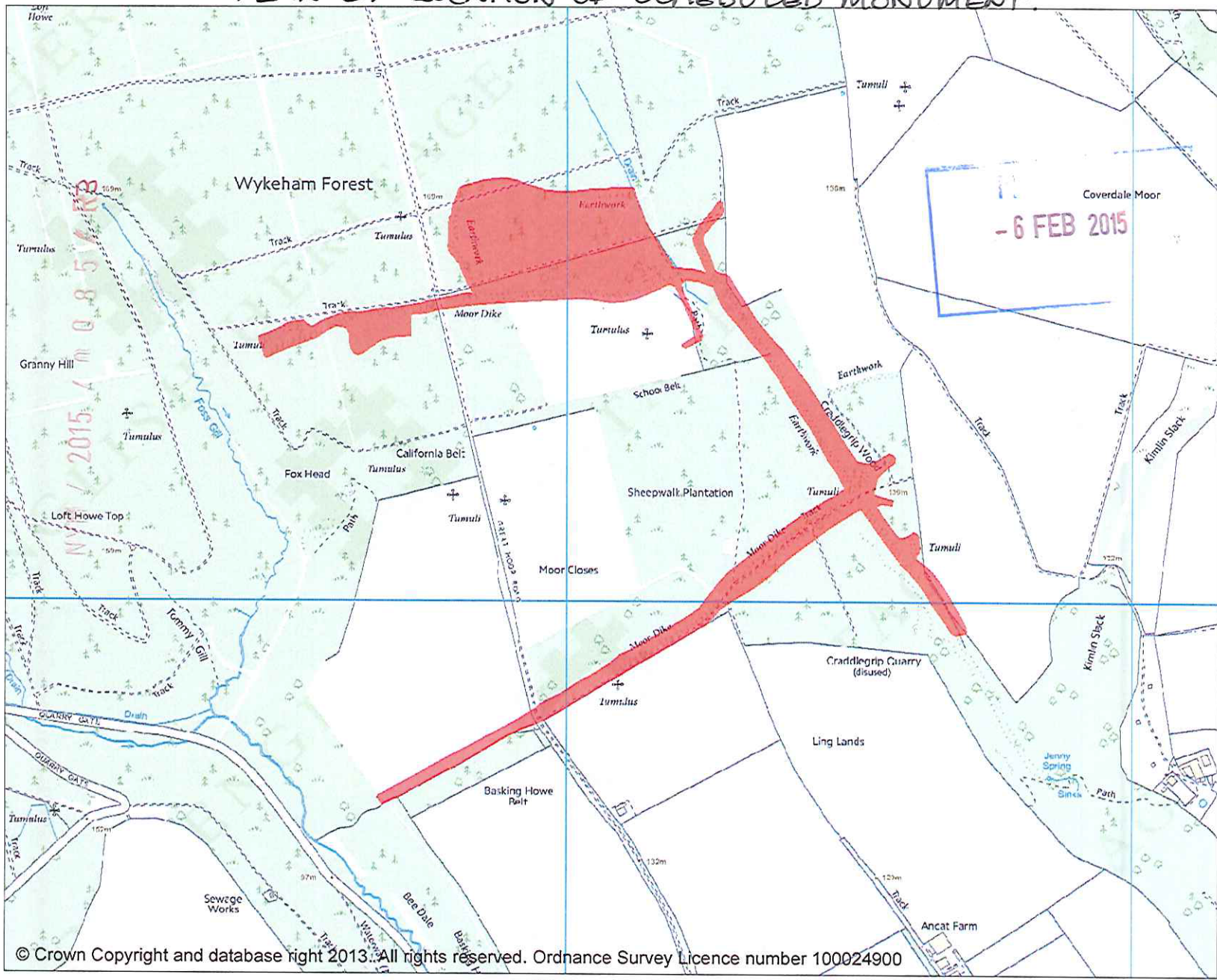


LOCATION OF WORK.

PLAN 1.



PLAN 2. LOCATION OF SCHEDULED MONUMENT.



© Crown Copyright and database right 2013. All rights reserved. Ordnance Survey Licence number 100024900

Heritage Category: Scheduling
List Entry No : 1017164

County: North Yorkshire
District: Scarborough
Parish: Hutton Buscel, West Ayton

Each official record of a scheduled monument contains a map. New entries on the schedule from 1988 onwards include a digitally created map which forms part of the official record. For entries created in the years up to and including 1987 a hand-drawn map forms part of the official record. The map here has been translated from the official map and that process may have introduced inaccuracies. Copies of maps that form part of the official record can be obtained from English Heritage.

This map was delivered electronically and when printed may not be to scale and may be subject to distortions. All maps and grid references are for identification purposes only and must be read in conjunction with other information in the record.

List Entry NGR: SE 96079 86875
Map Scale: 1:10000
Print Date: 5 February 2015

Name: The Moor Dikes and Cradlegrip Dike prehistoric linear boundaries and other prehistoric remains in Wykeham Forest


ENGLISH HERITAGE
 1 Waterhouse Square, 138-142 Holborn, EC1N 2ST
www.english-heritage.co.uk

PLAN 3. DETAIL PLAN OF WORK.

NYM / 2015 / 1085 / R3

© English Heritage 2014. Contains Ordnance Survey data.
© Crown copyright and database right 2014.
The English Heritage GIS contained in this material was obtained on 16/12/2013.
The most publically available up to date English Heritage GIS Data can be obtained from <http://www.english-heritage.org.uk>

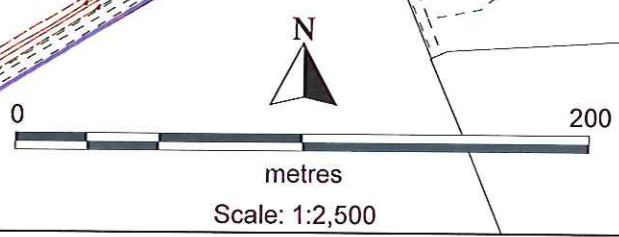
NYMNPA
- 6 FEB 2015

Scheduled Monument boundary

Length of track to have surface dressing

A
B

3700
3700
Scheduled Monument boundary



© Crown copyright and database rights 2014
You are not permitted to copy, sub-license, distribute or sell any of this data to third parties in any form.
North York Moors National Park Authority
Ordnance Survey 100021930