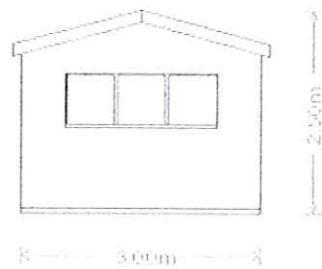
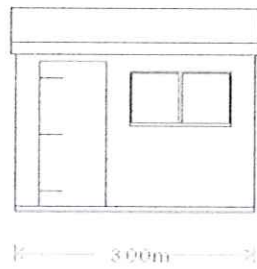
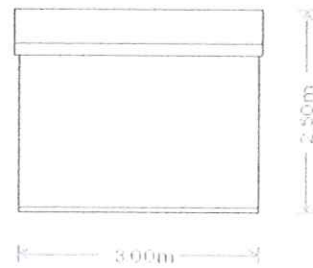
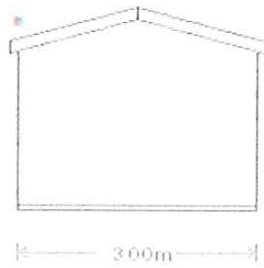
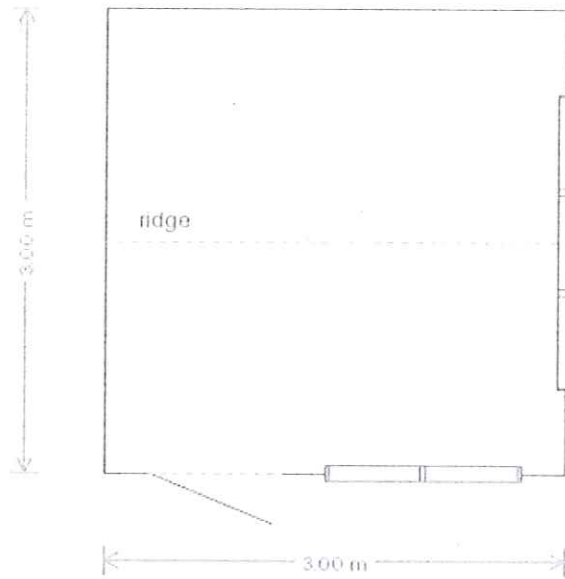


NM/MNPA

- 2 APR 2015

Quote Number: 191285

Floorplan & Elevations



2) Bluebell Cottage: Erection of summer house.

We have removed two derelict sheds and wish to replace them with single structure (see Plan 1). It would be supplied by Cranes.

Product Specification

- Dimensions: H2.4m x W3.0m x L3.0m
- Height: 2.0m to eaves
- Side walls: 19 x 125mm shiplap cladding on 38 x 75mm planed framing, using high-grade Scandinavian redwood
- Door: Fully-glazed joinery-made door, 1900 x 750mm
- Door frame: 75 x 75mm planed
- Windows: Joinery-made window frame fitted with 4-6-4 double-glazed unit
- Floor: 19 x 125mm tongue and groove floorboards on 38 x 75mm tanalized planed floor joists set at no more than 450mm centres
- Roof: 19 x 125mm tongue and groove matchboarding on 38 x 75mm planed framing, covered with 3.5kg per m torch on roofing felt with nylon back
- Internal lining: Breathable membrane paper, fibreglass insulation, internally cladded with 19 x 100mm tongue and groove matchboarding
- Finished in natural wood or dark paint

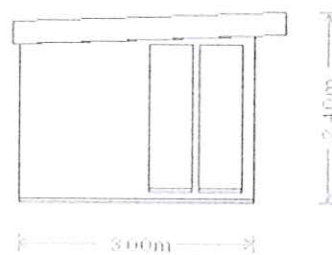
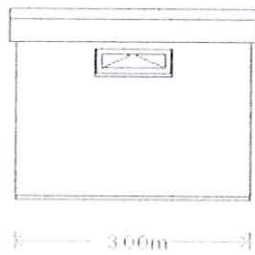
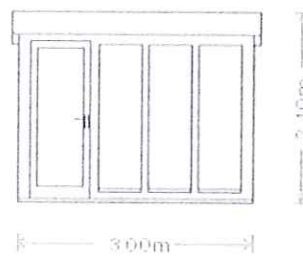
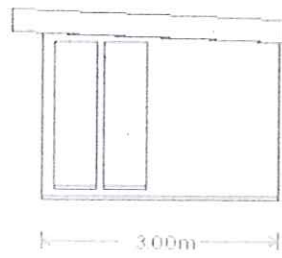
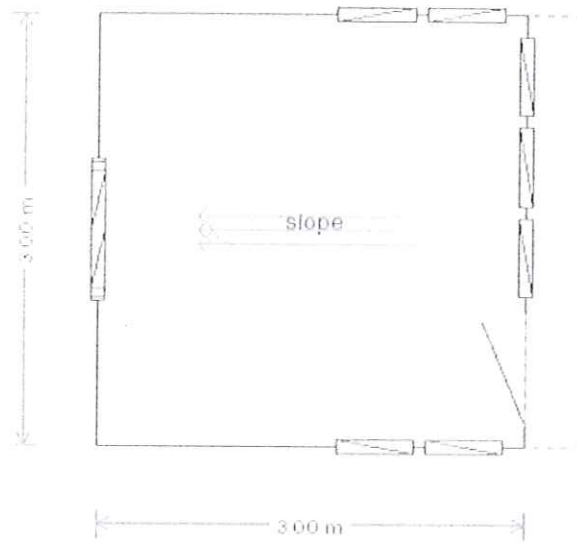
MM
-2 APR 2015

IPA

- 2 APR 2015

Quote Number: 197416

Floorplan & Elevations



Jonathan Finch/Nicky Milner