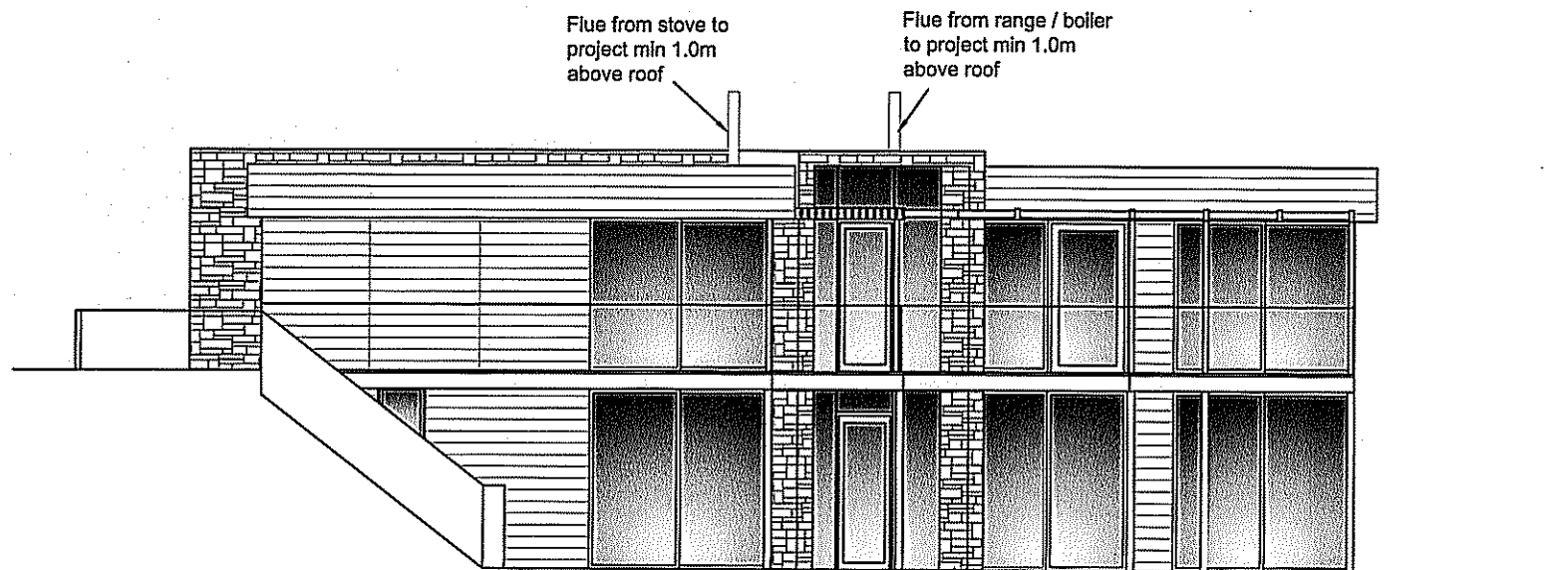


Proposed West Elevation



Proposed South Elevation

Timber Cladding manufactured from European Redwood, treated at high temperature to reduce sap and resin levels offering a 30-year service life and carrying the environmental safeguard of FSC or PEFC certification. Profile to be machined square edge from ex 150mm face timber.

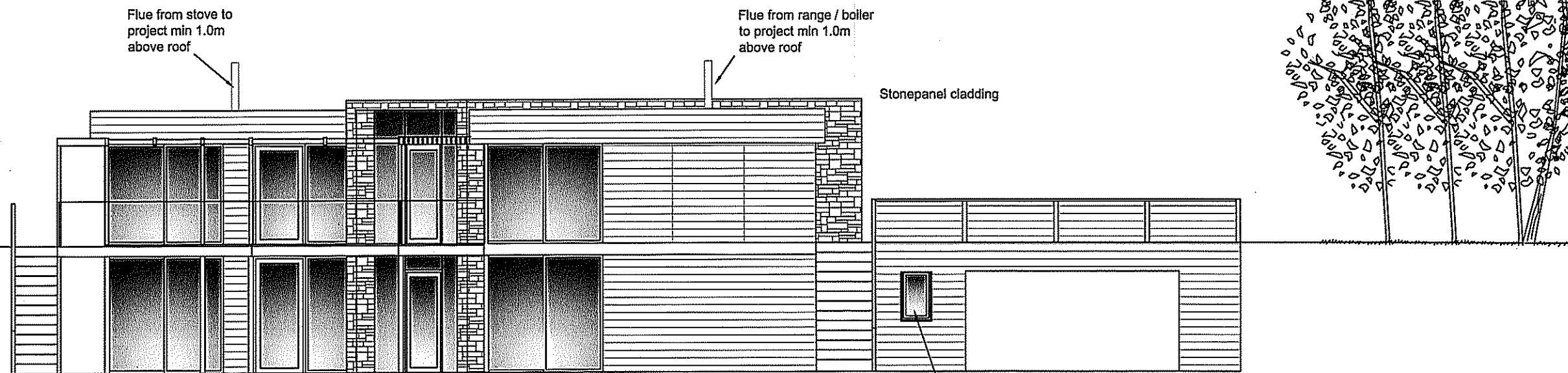
Cladding to be fixed using pairs of silicon bronze or stainless steel countersunk screws in matching face fixed min. 20mm dia cup min 60mm long. Fixings to be at max 600mm horizontal centres and are to be vertically and horizontally aligned.

Stonepanel system from Cupa Natural Materials. Panels made from sandstone mounted on a cement base reinforcement with a lightweight metallic frame.

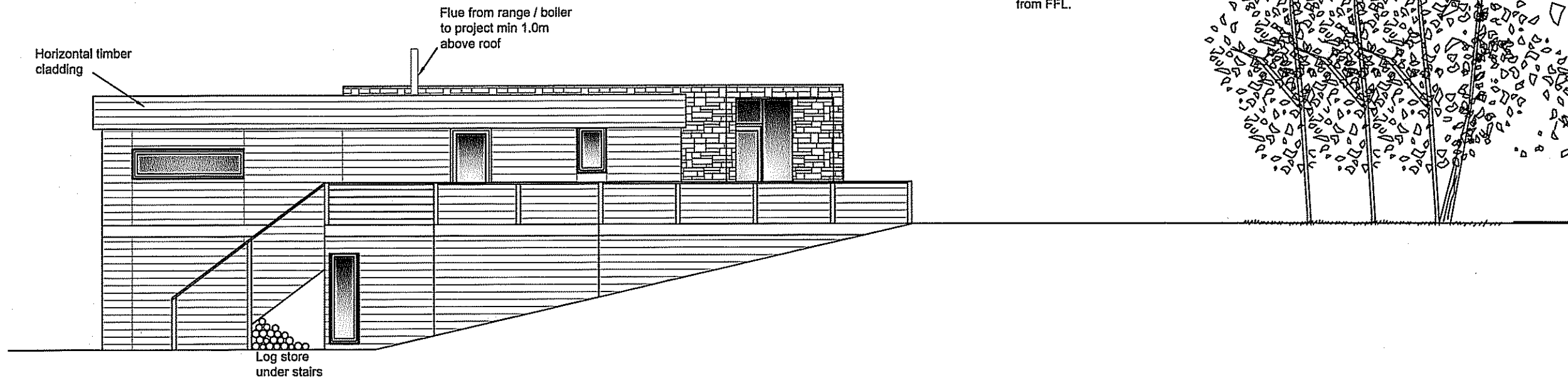
NYMNEA
30 JAN 2012

For Construction

John Cotterill BA (Hons) Arch.			
Wallnook Mount Pleasant Allendale Northumberland NE47 9PA			
Proj.	Dalby Beck, North Yorkshire		
Title	West and South Elevations		
Scale	1:100 @ A3	Date	Feb 10
Dwg No.	03		Rev. G



Proposed East Elevation



Proposed North Elevation

Timber Cladding manufactured from European Redwood, treated at high temperature to reduce sap and resin levels offering a 30-year service life and carrying the environmental safeguard of FSC or PEFC certification. Profile to be machined square edge from ex 150mm face timber.

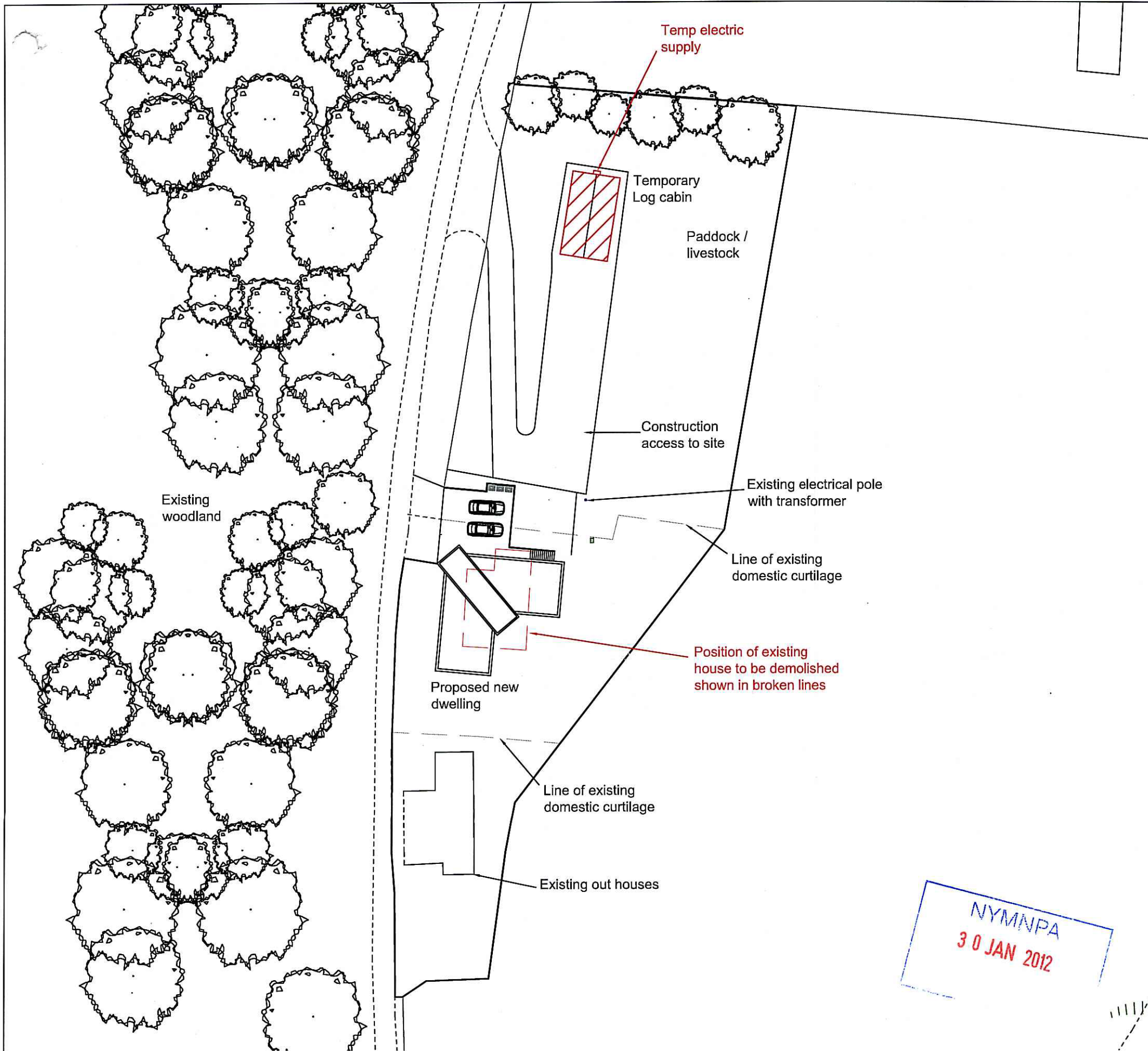
Cladding to be fixed using pairs of silicon bronze or stainless steel countersunk screws in matching face fixed min. 20mm dia cup min 60mm long. Fixings to be at max 600mm horizontal centres and are to be vertically and horizontally aligned.

Stonepanel system from Cupa Natural Materials. Panels made from sandstone mounted on a cement base reinforcement with a lightweight metallic frame.

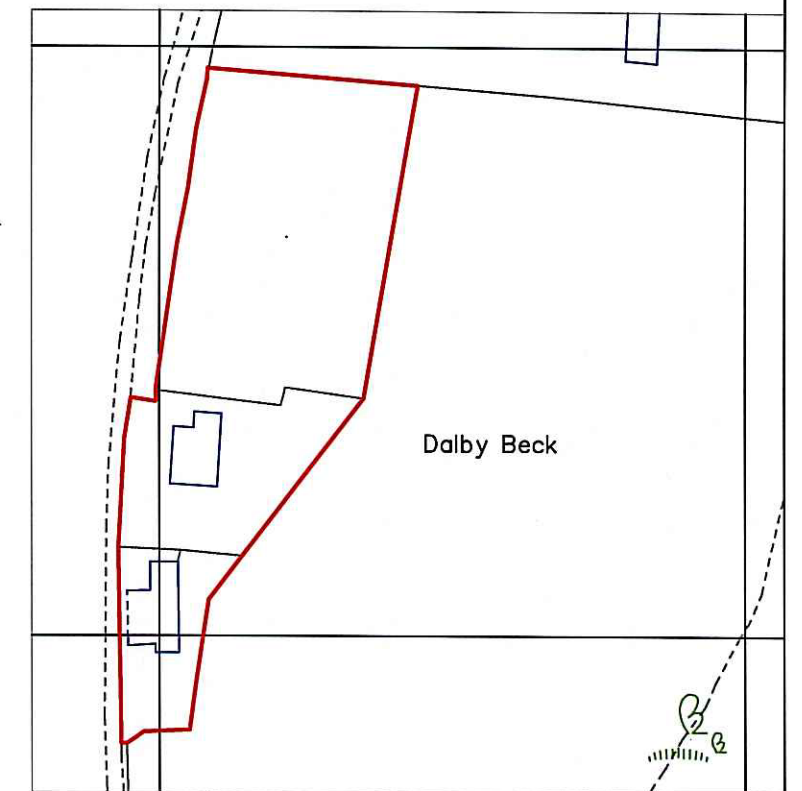
NYM/NPA
30 JAN 2012

For Construction

John Cotterill BA (Hons) Arch.			
Wallnook Mount Pleasant Allendale Northumberland NE47 9PA			
Proj.	Dalby Beck, North Yorkshire		
Title	East and North Elevations		
Scale	1:100 @ A3	Date	Feb 10
Dwg No.	04		Rev. J



Proposed Site Plan



Location Plan Scale 1:1250

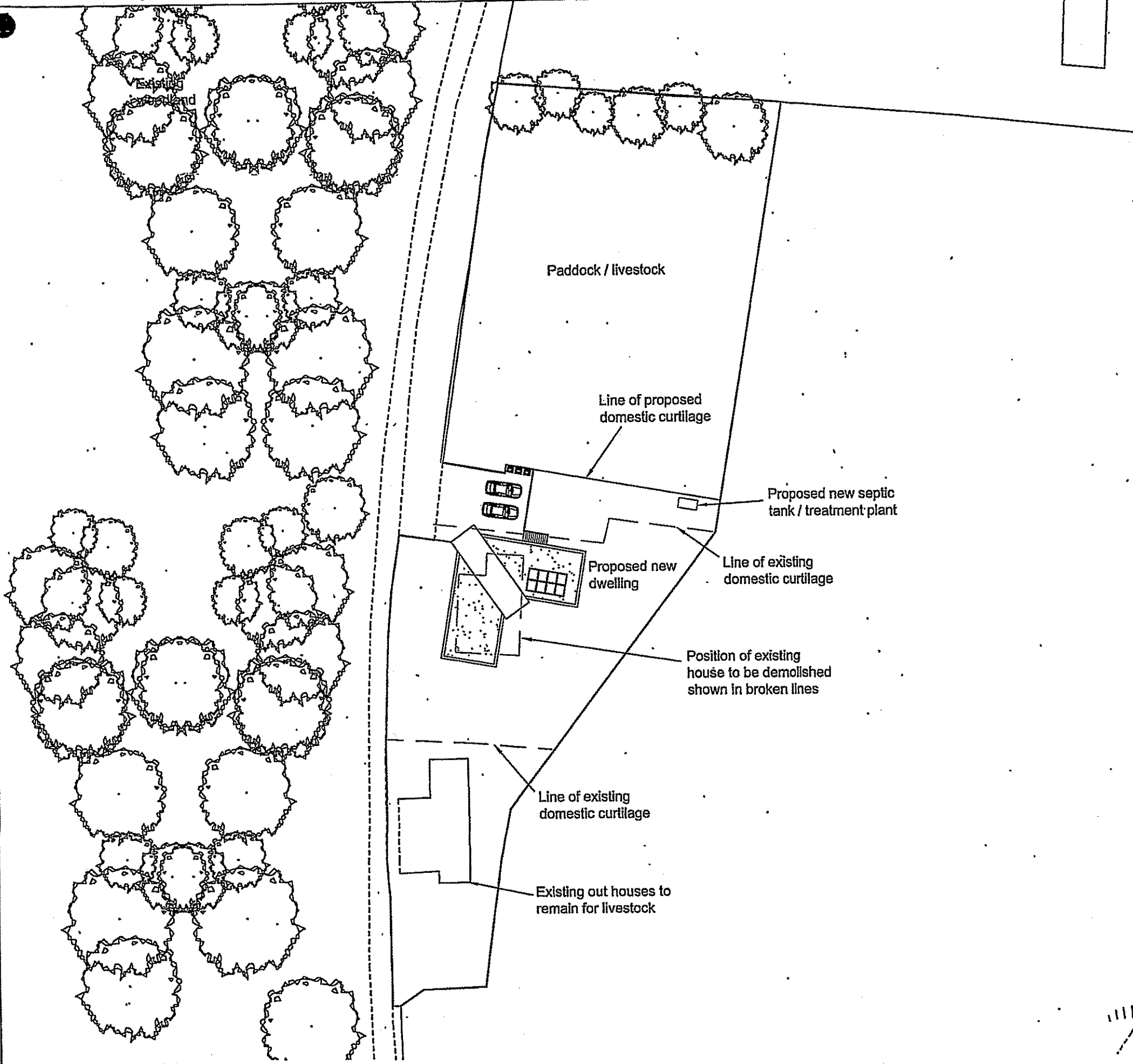
For Construction

John Cotterill BA (Hons) Arch. Wallnook Mount Pleasant Allendale Northumberland NE47 9PA			
Proj.	Dalby Beck, North Yorkshire		
Title	Site Plan		
Scale	1:500 @ A3	Date	June 10
Dwg No.	11		Rev. F

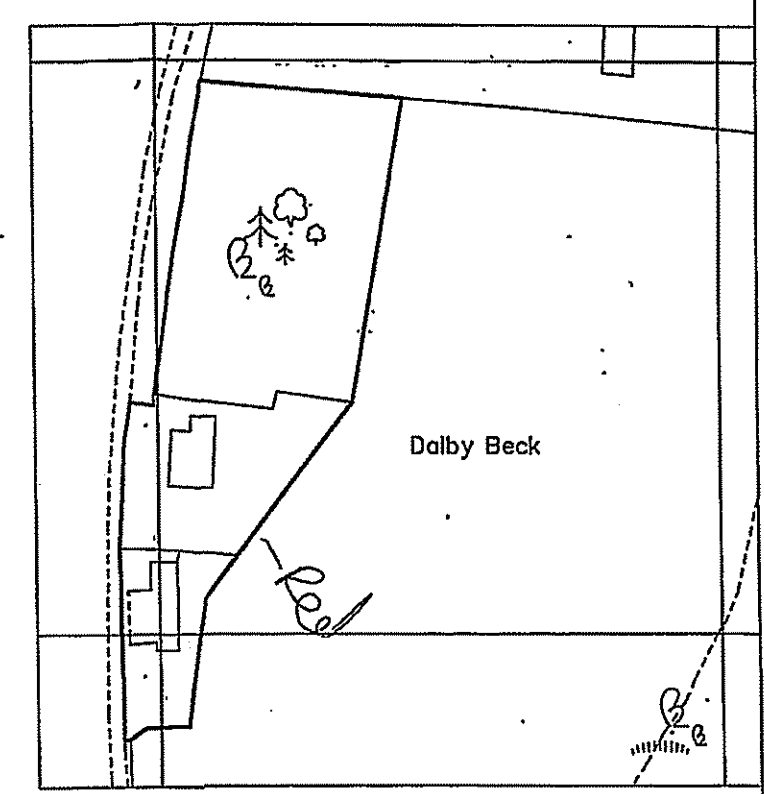
NYMNPA
 30 JAN 2012

AS appraed

NYM / 2012 / 0 0 6 6 / NM



Proposed Site Plan



Proposed Location Plan Scale 1:1250

NYMINPA
14 JUL 2010

John Cotterill BA (Hons) Arch.			
Wallnook Mount Pleasant Allandale, Northumberland NE47 9PA			
Proj.	Jon & Clair Gascoign		
Title	Alternative Site Plan		
Scale	1:500 @ A3	Date	June 10
Dwg No.	11		Rev. A