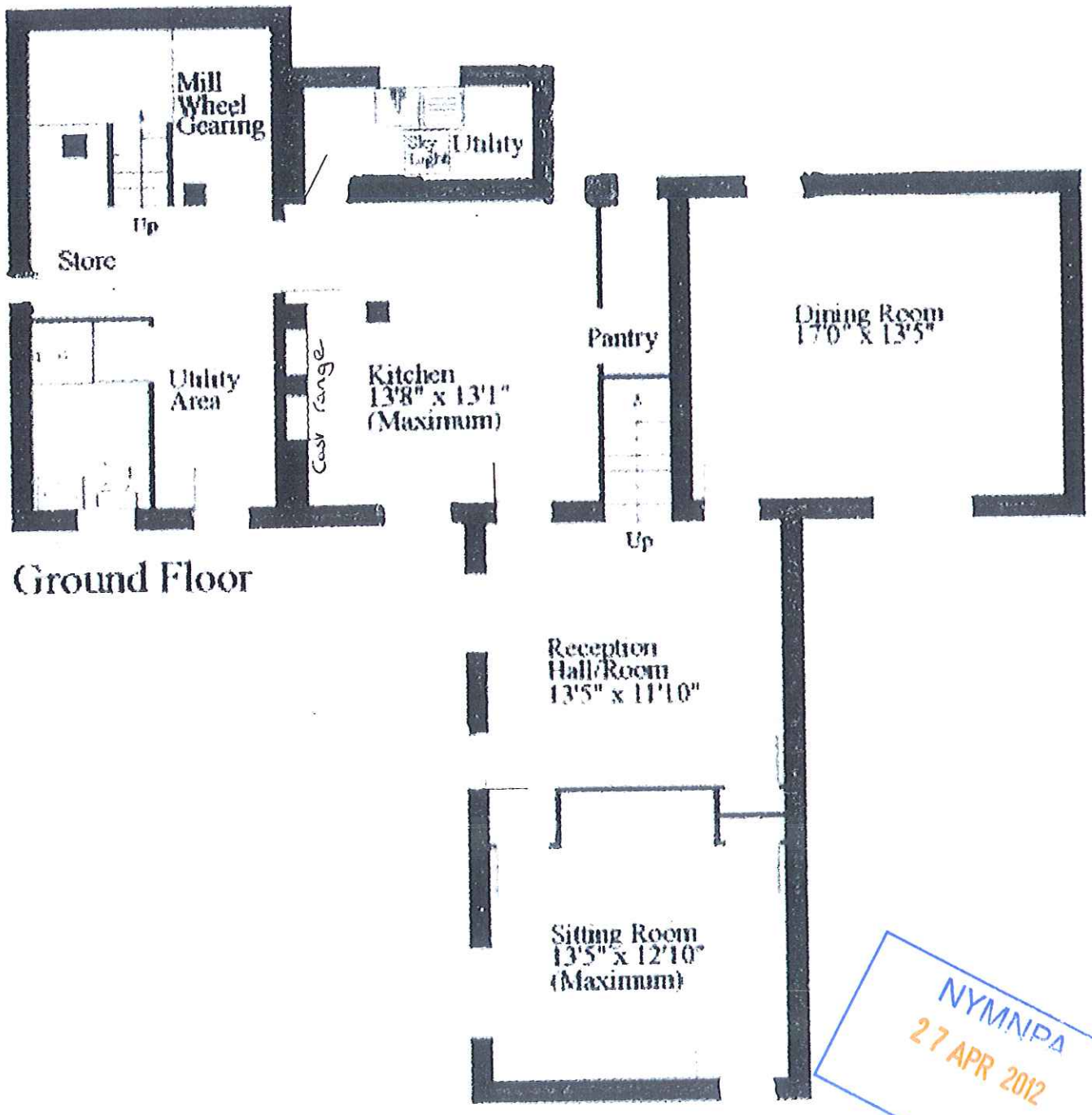


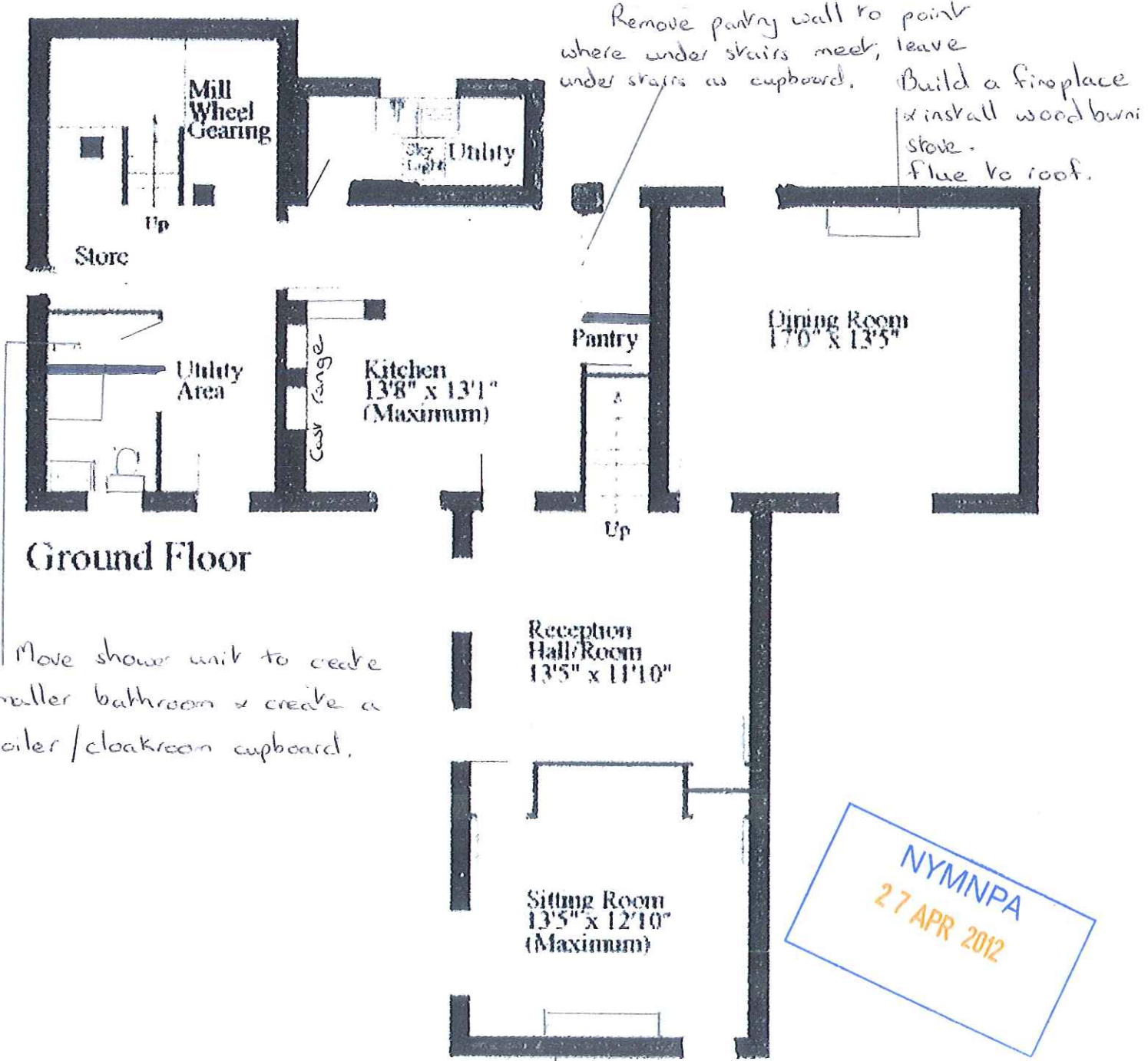
Troutsdale Mill Existing Ground Floor plan



Ground Floor

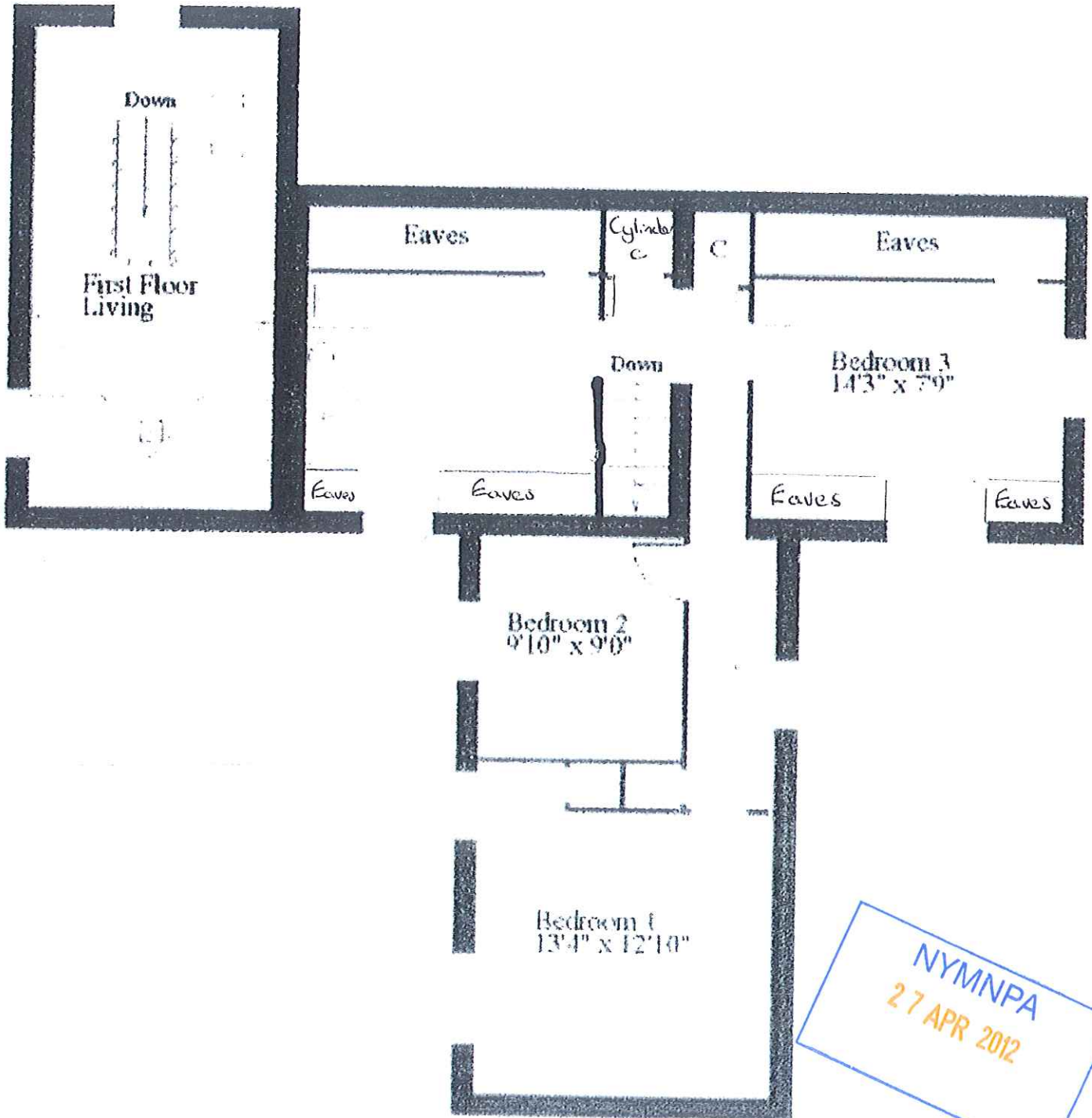
NYM NPA
27 APR 2012

Troutsdale Mill Proposed Ground Floor Plan



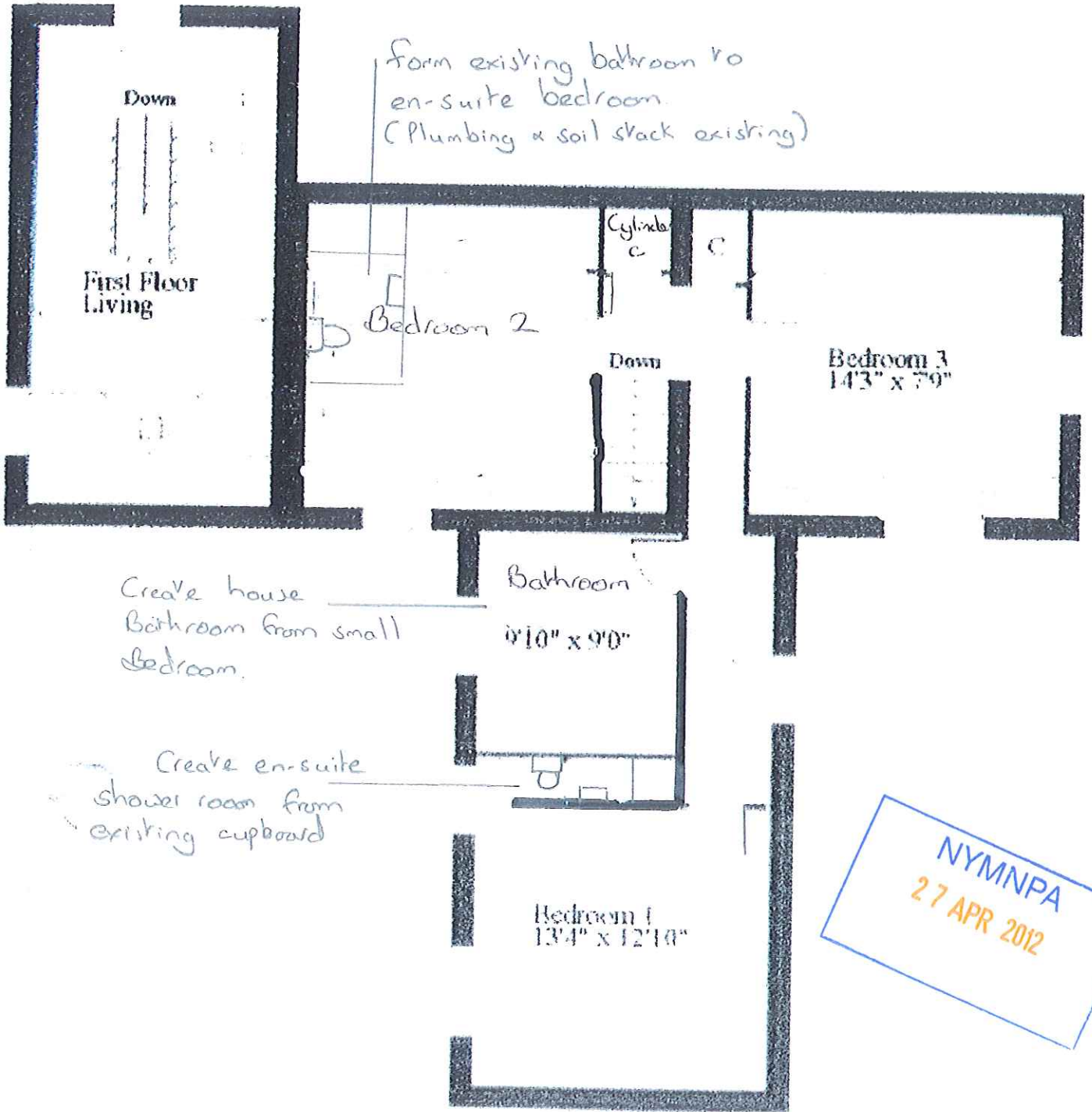
Ground Floor

Troutsdale Mill Existing 1st Floor plan



NYMNP
27 APR 2012

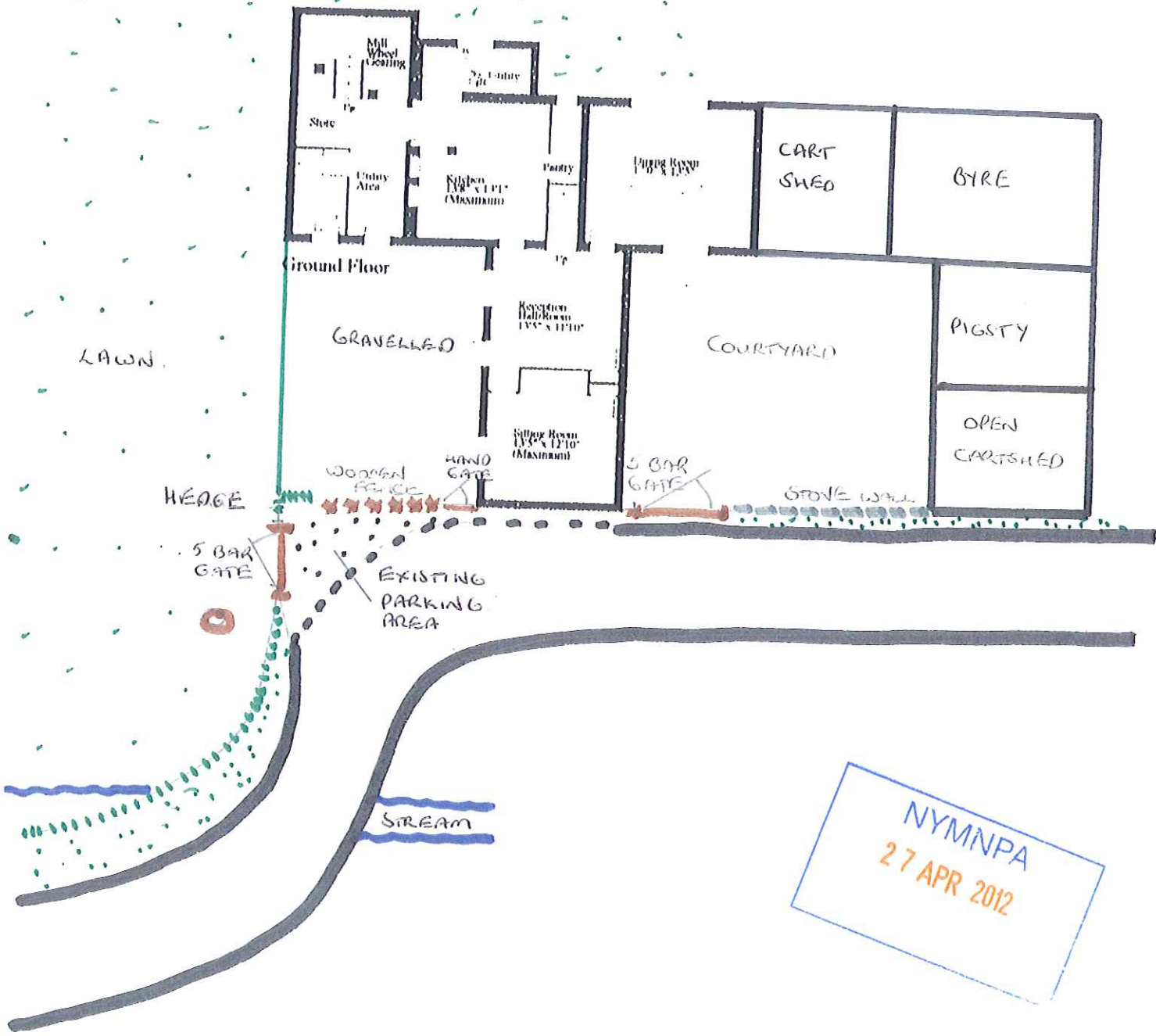
Troutsdale Mill
Proposed First Floor Plan



PLAN OF EXISTING EXTERIOR AREA

Plan no: EXT 01

Troutsdale Mill



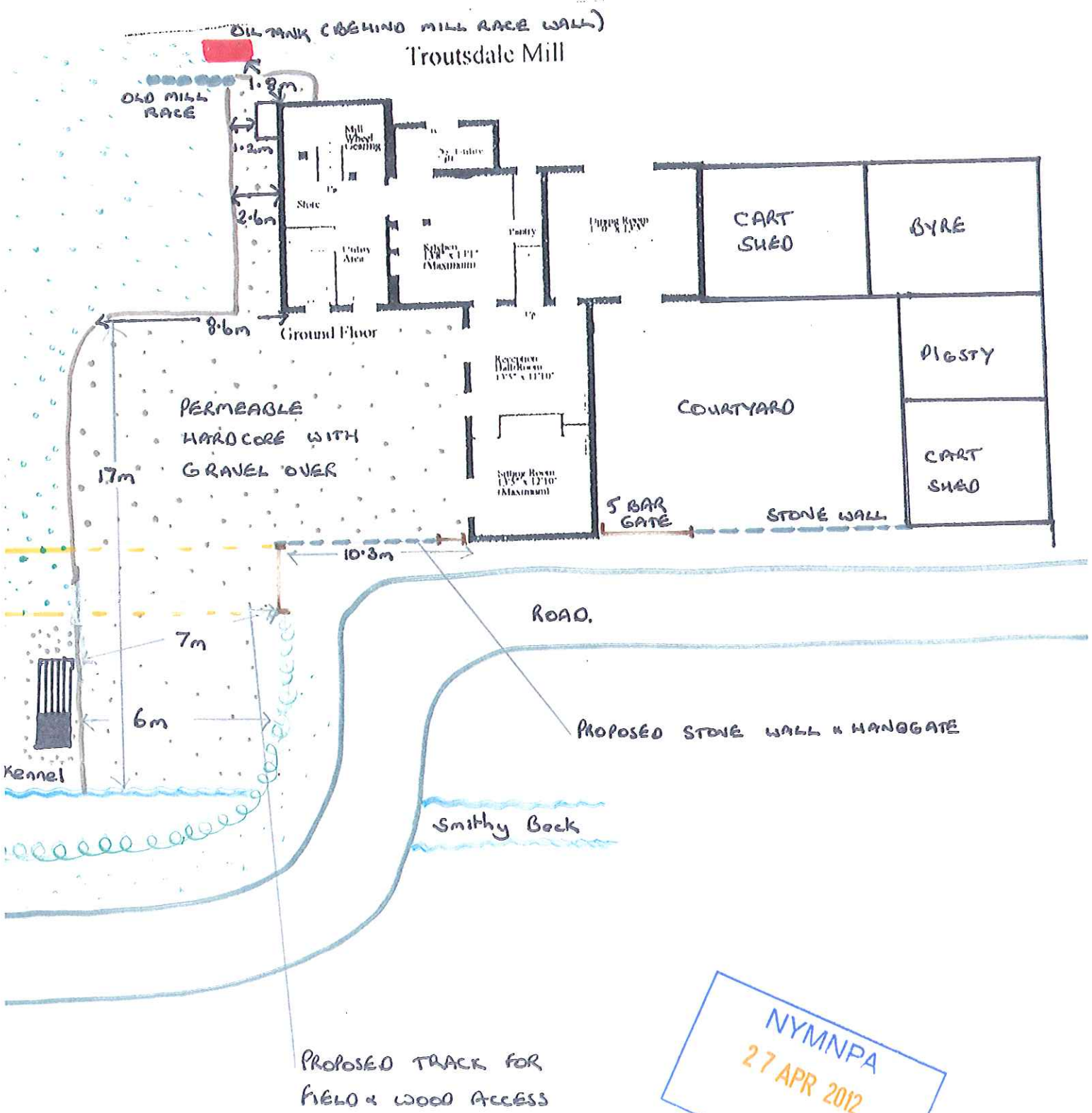
NYMNPA
27 APR 2012

○ Position of diseased old apple tree - propose to fell

Plan of proposed exterior area

NYM / 2012 / 0278 / FL 1

Plan number ext02

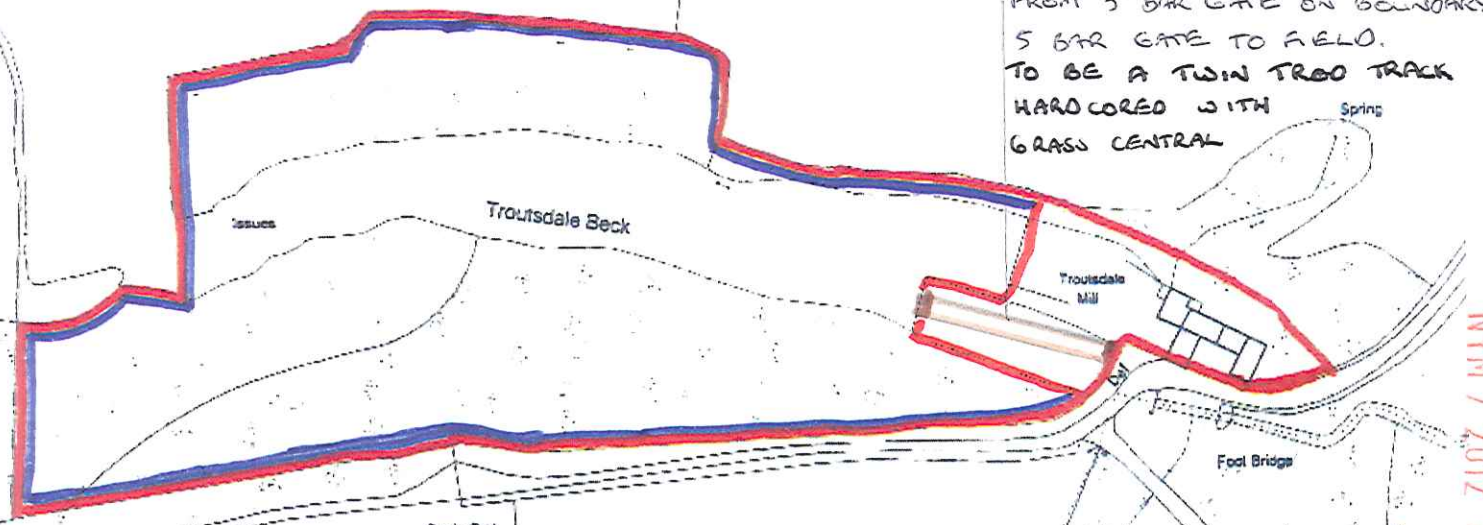




Plan no: EXT 03

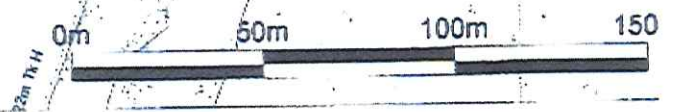
PLAN OF PROPOSED TRACK

POSITION OF PROPOSED TRACK FROM 5 BAR GATE ON BOUNDARY TO 5 BAR GATE TO FIELD. TO BE A TWIN TROD TRACK HARD CORED WITH GRASS CENTRAL

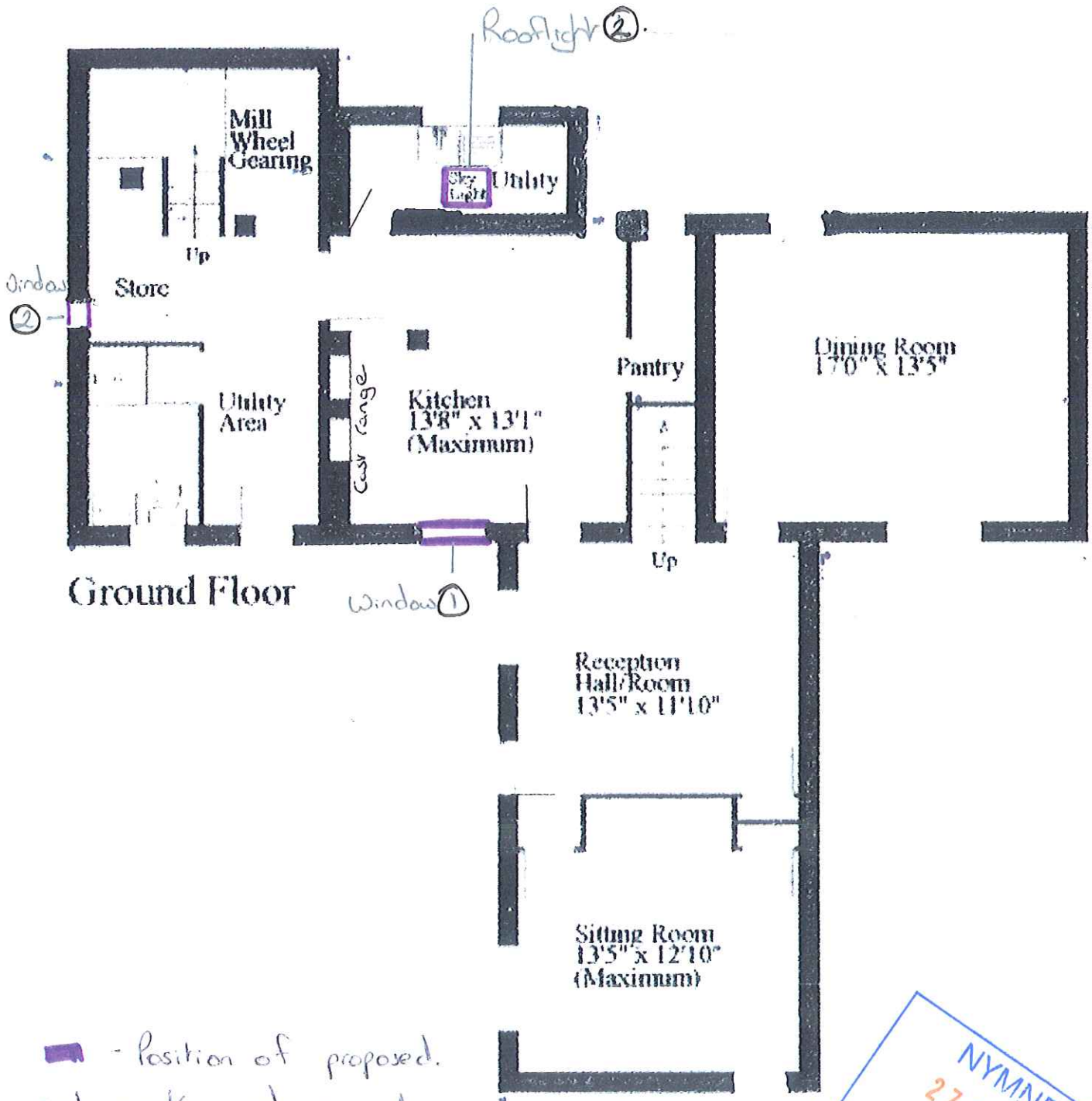


NYMANBA
27 APR 2012

NYM / 2012 / 0278 / FL



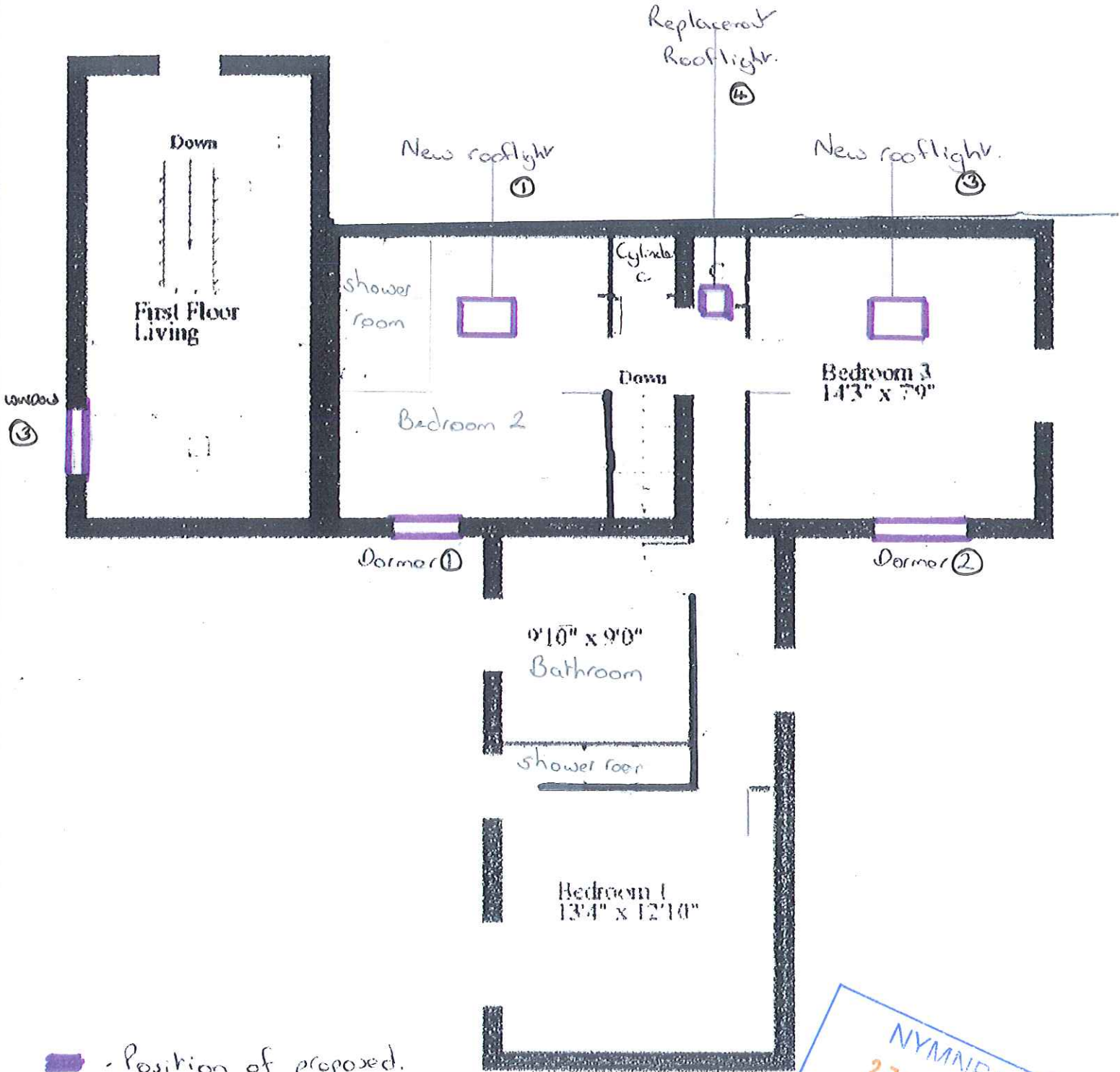
Troutsdale Mill
Proposed Ground Floor Plan showing replacement window positions



■ - position of proposed replacement windows and
no replacement rooflights.

NYM/NPA
27 APR 2012

Troutsdale Mill
Proposed First Floor Plan showing replacement window positions

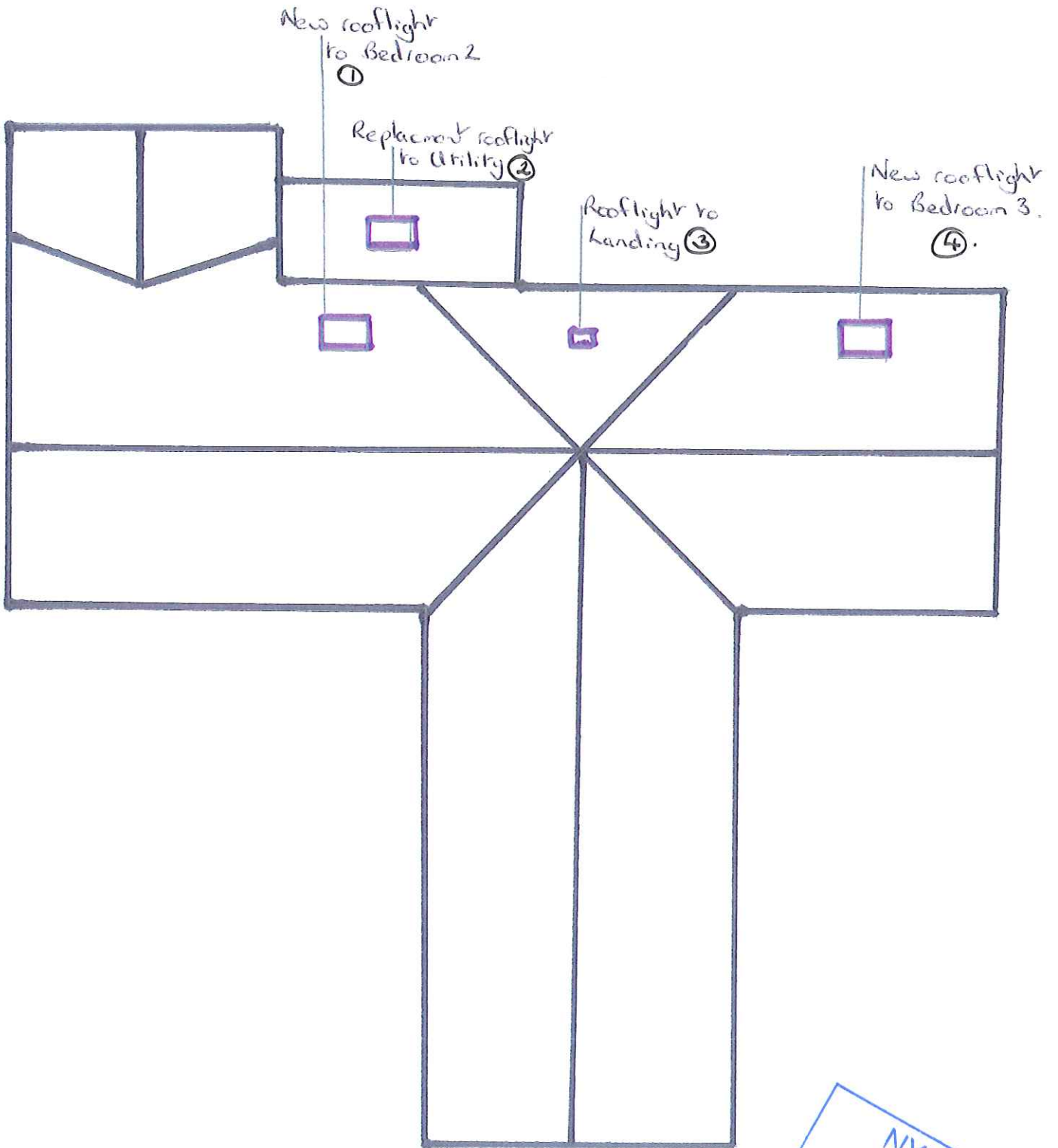


■ - Position of proposed replacement windows and 3 no. rooflight windows.

See accompanying photographs.
" " profiles from R. Taylors.

NYMNE
27 APR 2012

Troutsdale Mill
Proposed Roof Plan showing rooflight positions



NYM NPA
27 APR 2012

PLAN NO: W/01

S. TAYLOR & SON LTD

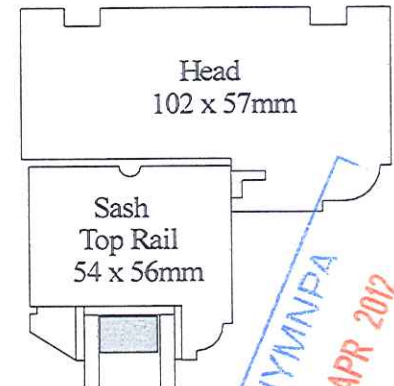
Hungate Joinery Works, Pickering, North Yorkshire. YO18 7DL

Tel: 01751 472143

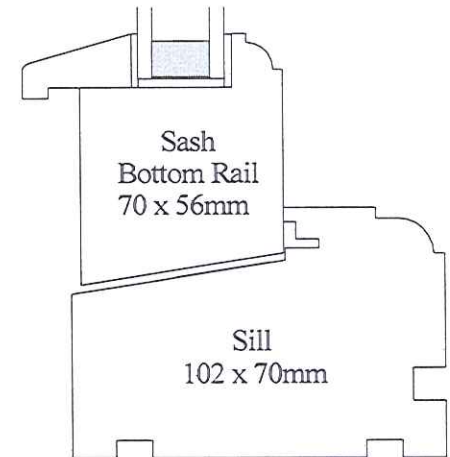
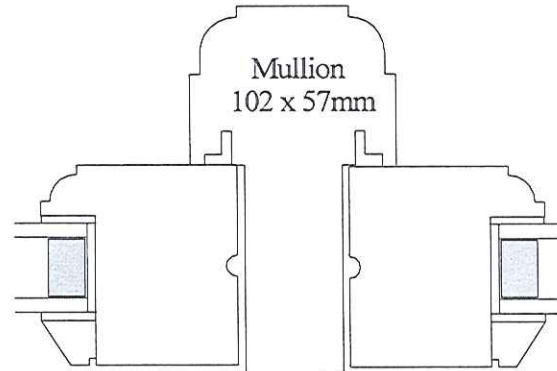
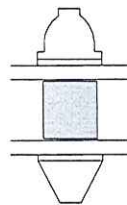
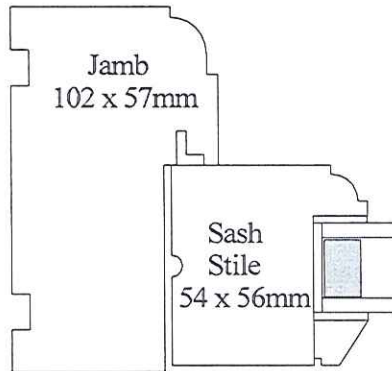
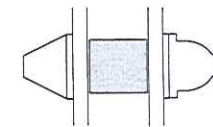
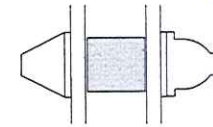
Fax: 01751 477036

Timber sections for our standard casement windows
Showing opening sash (Fixed sash required in non-opening sections)
Applied glazing bars
4/16/4 (24mm) Planitherm low E Double Glazing.
No Trickle Vent - Please confirm with Building Control / Planners

NYM / 2012 / 0278 / FL



NYM/NPA
27 APR 2012



Scale 1:2

PLAN NO: W/02.

S. TAYLOR & SON LTD

Hungate Joinery Works, Recreation Road, Pickering, North Yorkshire. YO18 7DA

Tel: 01751 472143

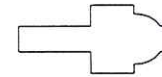
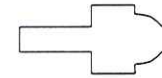
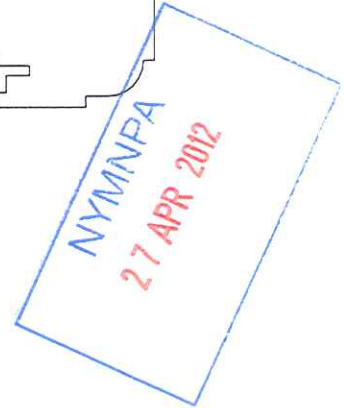
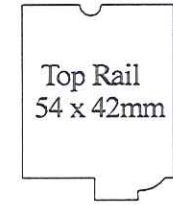
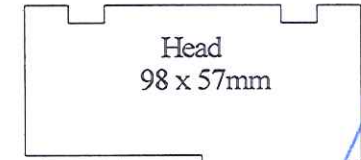
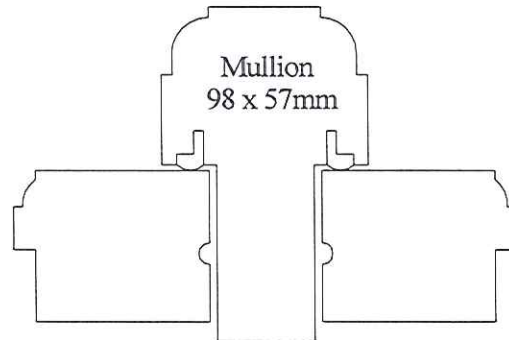
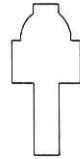
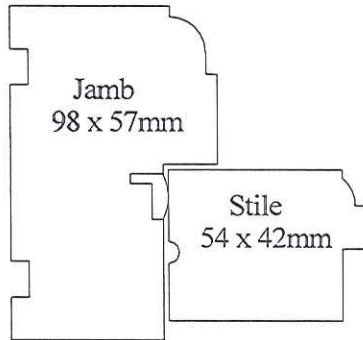
Fax: 01751 477036

Drawing showing sections of our casement windows

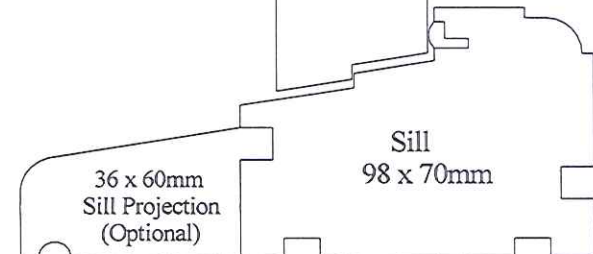
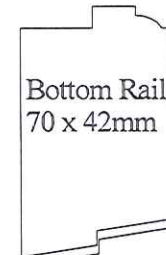
With inset sashes

Rebated for single glazing.

NYM/2012/0278/FL



Glazing Bar
42 x 19mm

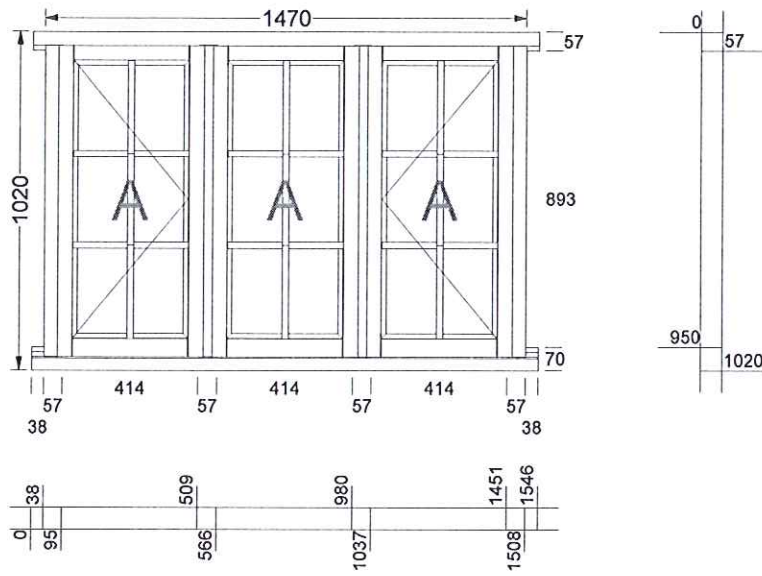


Scale 1 : 2

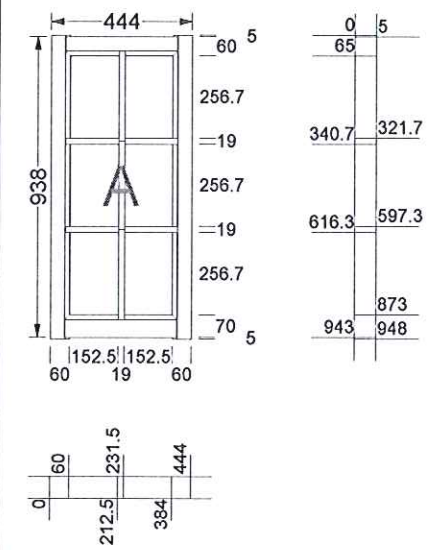
S. Taylor & Son Ltd

Mid size Diagrams with setting out

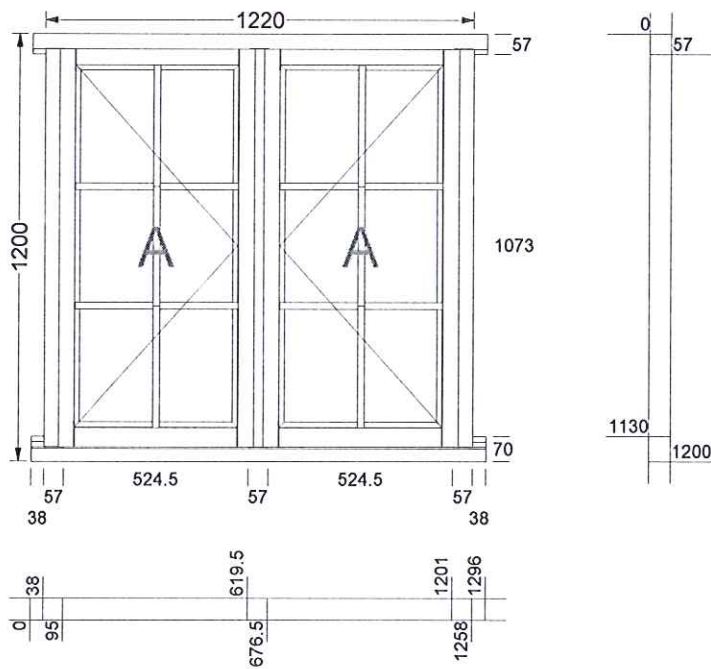
1 X Window - C (Kitchen)



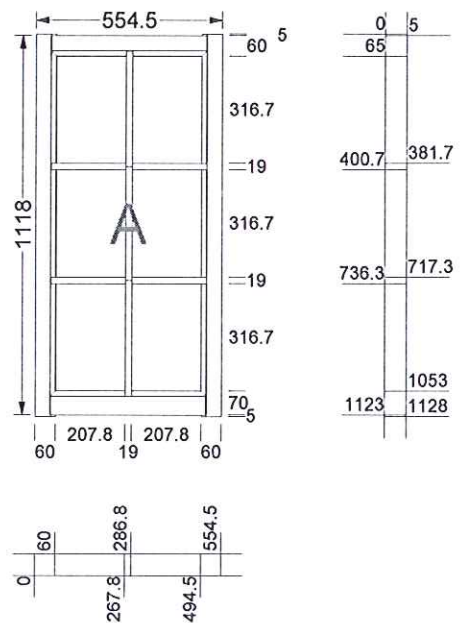
C Side vent left sash, Side vent right sash, Fixed sash



2 X Window - D,E (Dormers)



D,E Side vent left sash, Side vent right sash



NYM NPA
27 APR 2012

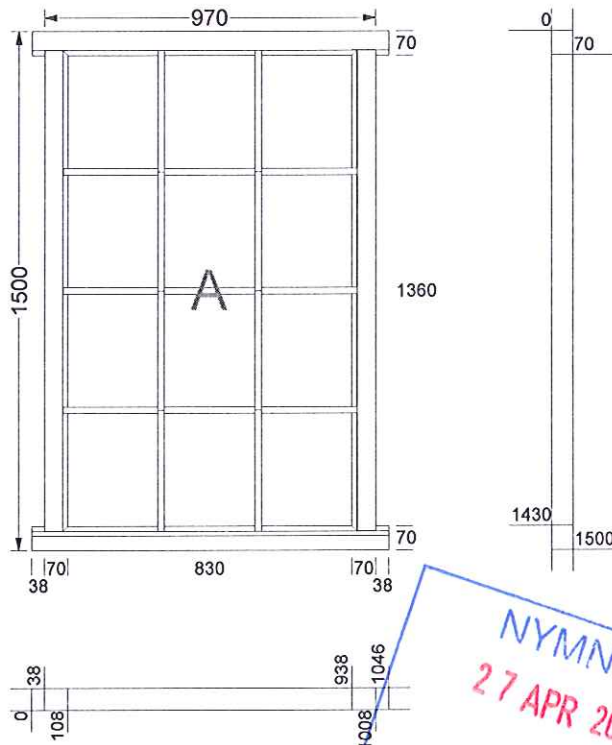
S. Taylor & Son Ltd

Mid size Diagrams with setting out

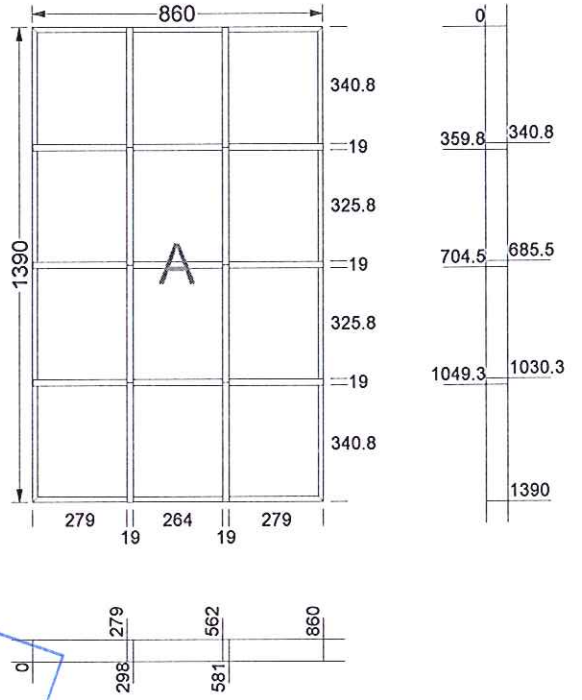
Client Mr Kendall Andrew

Job

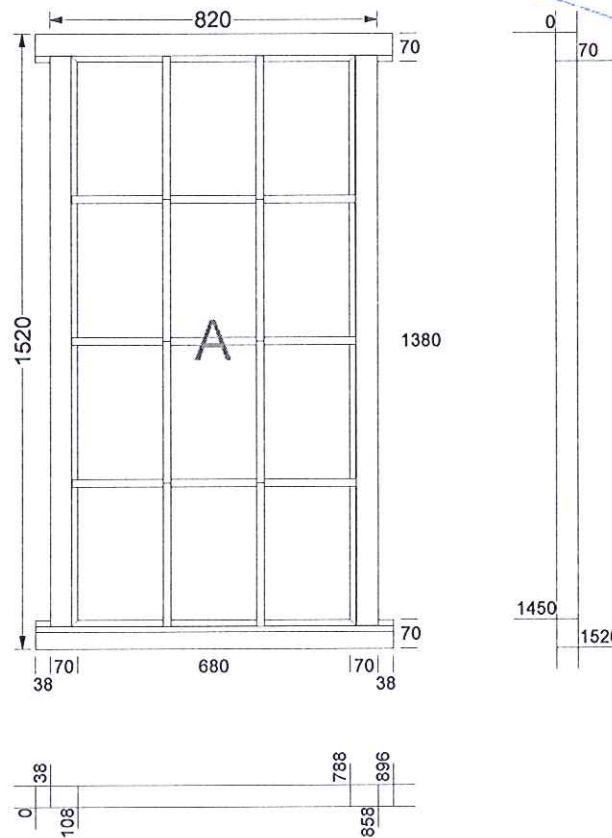
1 X Window - A (Gable)



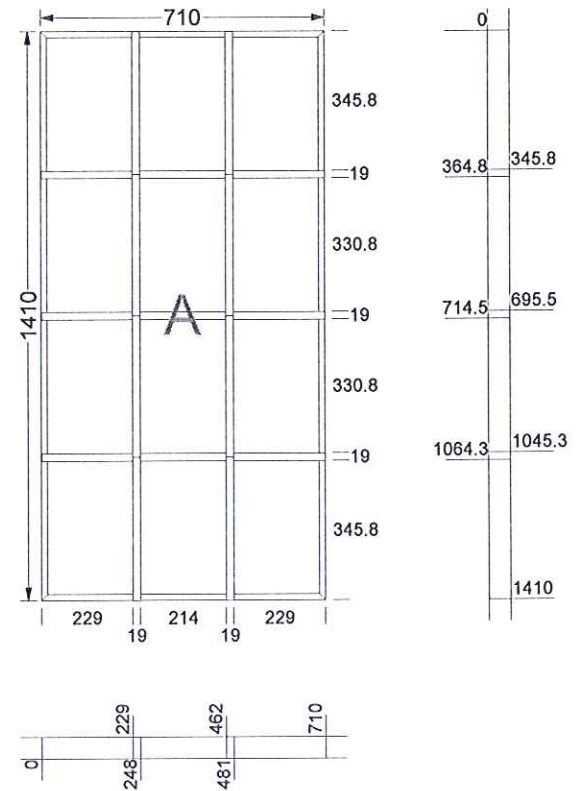
A Direct glazing



1 X Window - B (Gable)



B Direct glazing



[Request a Quote](#)

NYM / 2012 / 0 2 7 8 / FL

the Conservation Rooflight®

"Conservation continues to have a high profile in the building profession and the Rooflight Company's commitment to excellence in this field is well-recognised."

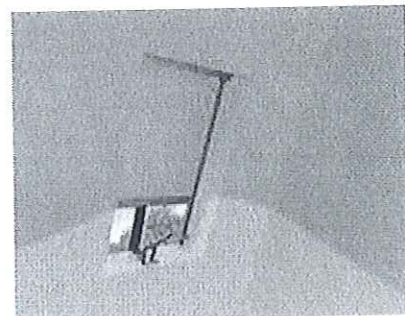
Jack Pringle, Past President of the RIBA

the Conservation Rooflight® remains faithful to its Victorian heritage whilst embracing technical developments to stay ahead of Building Regulations.

Why specify the Conservation Rooflight®?

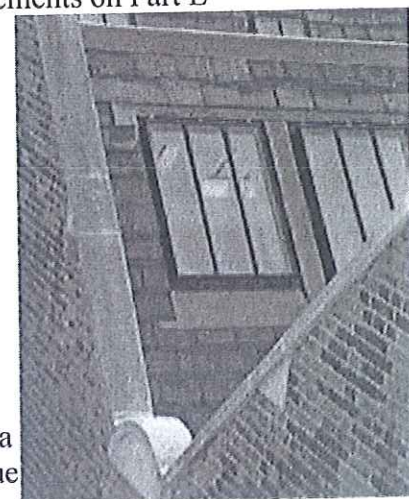
the Conservation Rooflight® is the original low profile skylight, combining the highest modern performance standards with an authentic traditional appearance. Favoured by English Heritage, the National Trust and planning / conservation officers, it is available in a wide range of standard sizes, along with the Bespoke Design Service.

- Traditional appearance and approval by Planning Authorities
- Faithful reproduction of Victorian cast iron rooflight
- Ultra-low profile, fine lines of steel and genuine glazing bar
- Complies with planning requirements for listed buildings and conservation areas
- Sizes for any application and a specials design service
- Favoured by the National Trust and English Heritage
- Silicone fronting replicating traditional putty
- Stepped glazing detail to give appearance of single glazing
- The Rooflight Company offers the widest range of sizes available with 17 top-hinged and 2 side-hinged options
- Now available – moisture resistant linings (for painting on-site) create a warm to the touch internal surface
- Now available – sleek blind system offering total blackout



High standards of performance

- Standard double glazed unit exceeds current building regulation requirements on Part L
- High performance thermal lining (the patented Thermoliner®) helps reduce condensation
- Exceeds weather tightness test BS 6375: Part 1:2009 up to Hurricane Force 12
- High degree of air tightness
- The Conservation Rooflight® can provide ventilation in accordance with Part F of the Building Regulations



Glazing specification

We are currently changing our standard IGU specification to 4mm SGG PLANITHERM® TOTAL+ toughened inner with a 16mm argon cavity and a 4mm SGG PLANILUX® toughened outer, giving a glass centre pane U-value of 1.2W/m²K.

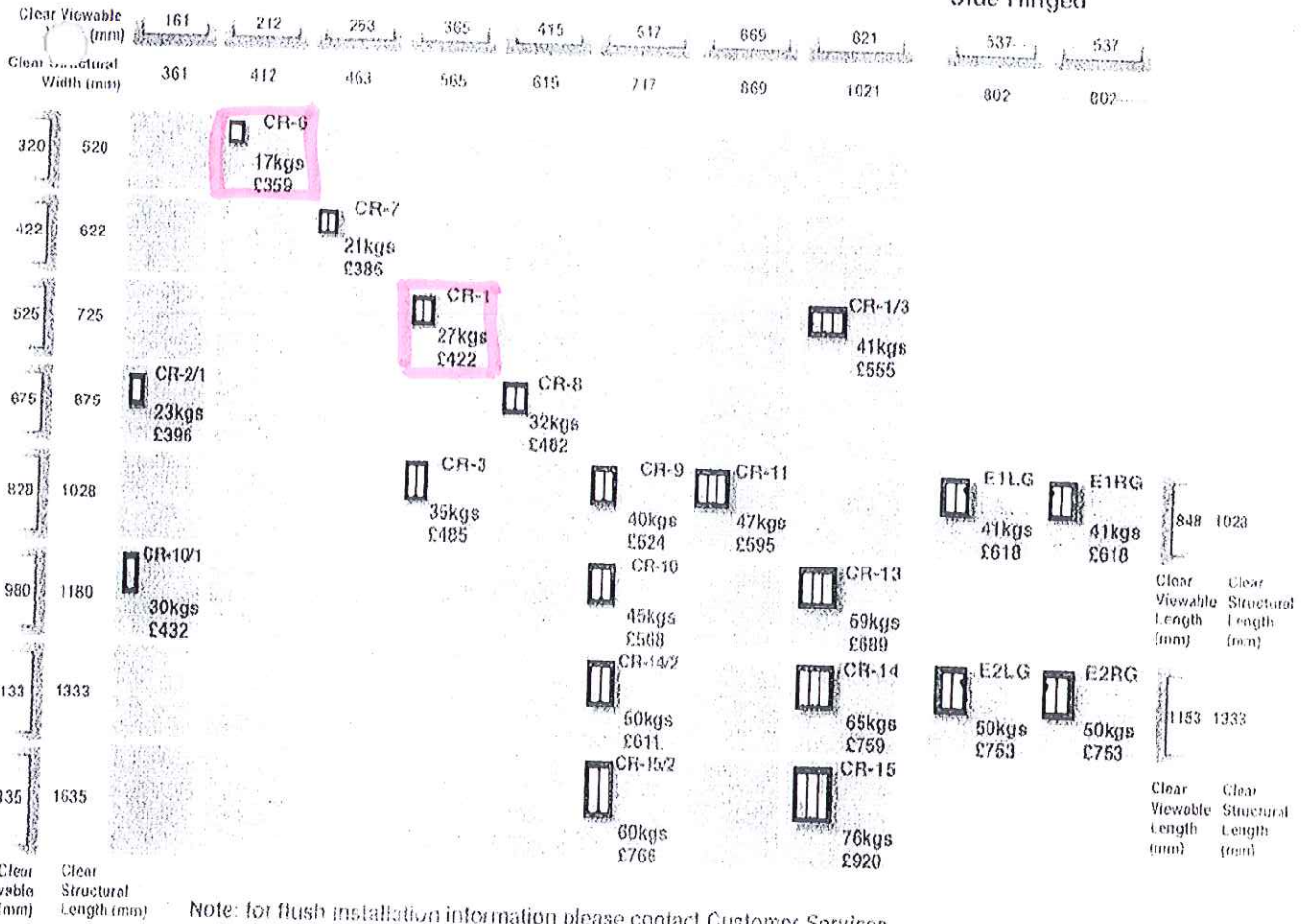
Other glazing specifications offering for example, improved thermal, acoustic or security properties as well as decorative finishes are also available.

Top Hinged

RV1 / 2012 / 0278 / 517

Egress/Access

Side Hinged



Rooflight sizes

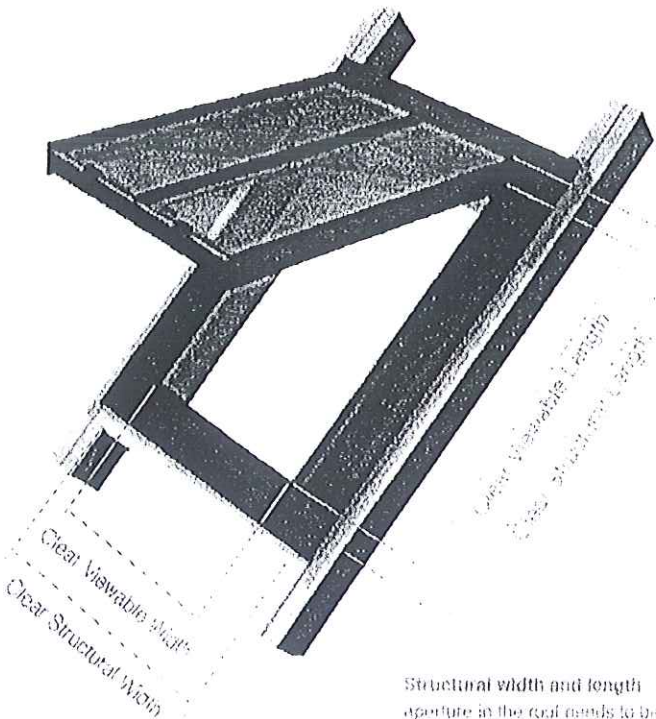
Rooflight numbers 1, 2, 3

Structural width 565mm
 Structural length 725mm
 Viewable width 365mm
 Viewable length 525mm

Rooflight number 4

Structural width 412mm
 Structural length 520mm
 Viewable width 212mm
 Viewable length 320mm

NV1000
 27 APR 2012



Structural width and length - this is the aperture in the roof needs to be formed to

Rooflight