

SPECIMEN TREES

Species	Size(cm)	Type	Density	No.
Acer campestre 'Elsrijk'	14-16 cm Girth	EHS RB	AS SHOWN	19
Betula pendula	14-16 cm Girth	EHS RB	AS SHOWN	5
Betula pendula	12-14 cm Girth	HS RB	AS SHOWN	11
Pyrus 'Chanticleer'	14-16 cm Girth	EHS RB	AS SHOWN	15
Quercus robur	14-16 cm Girth	EHS RB	AS SHOWN	20
Sorbus aucuparia	12-14 cm Girth	HS RB	AS SHOWN	3
TOTAL				3670

NB. Refer to planting Details 1 & 2 on Golder Associates Dwg No. GA/05588358/WHIT/P/002 and outline specification notes.

ORNAMENTAL SHRUBS

Species	Size(cm)	Type	Density (m ²)	No.
Berberis atropurpurea 'Nana'	40-60	3Lr	5	189
Cornus 'Midwinter Fire'	40-60	3Lr	3	67
Cornus 'White Gold'	40-60	3Lr	3	57
Lonicera 'Maygreen'	40-60	3Lr	3	207
Mahonia 'Apollo'	20-30	3Lr	5	170
Pinus mugo 'Mughus'	30-40	4Lr	3	21
Photinia 'Red Robin'	40-60	3Lr	3	31
Potentilla 'Abbotswood'	20-30	3Lr	5	202
Rosemarinus 'Severn Seas'	30-40	3Lr	3	33
Spiraea 'Anthony Waterer'	30-40	3Lr	3	91
Spiraea 'Firelight'	30-40	3Lr	3	67
Vinca minor 'Bowles Variety'	20-30	3Lr	7	358
Vinca minor 'Variegata'	20-30	3Lr	7	50
TOTAL				335

NB. Refer to planting Details 4 & 5 on Golder Associates Dwg No. GA/05588358/WHIT/P/002 and outline specification notes.

ORNAMENTAL HEDGEROW

Species	Size(cm)	Type	Spacing	No.
Carpinus betulus	40-60cm	1u1	12 per lin mtr	3670
TOTAL				3670

NB. Refer to planting Detail 7 on Golder Associates Dwg No. GA/05588358/WHIT/P/002 and outline specification notes.

ORNAMENTAL MIX (OM)

Species	Size(cm)	Type	Spacing	No.
Betula pendula	200-250cm	Fthd	2.5m centres	55
Ilex aquifolium	40-60cm	2Ltr	1m centres	280
TOTAL				335

NB. Refer to planting Details 4 & 5 on Golder Associates Dwg No. GA/05588358/WHIT/P/002 and outline specification notes.

WILDFLOWER MEADOW (WF)

Species Mix (Based on MG5 Traditional Hay Meadow)	%	Sowing Rate
Festuca rubra	20	5 grms per m ²
Cynosurus cristatus	10	5 grms per m ²
Agrostis capillaris	10	5 grms per m ²
Anthoxanthum odoratum	10	5 grms per m ²
Holcus lanatus	10	5 grms per m ²
Carex flacca	5	5 grms per m ²
Luzula campestris	5	5 grms per m ²
Trifolium pratense	5	5 grms per m ²
Centaura nigra	5	5 grms per m ²
Lotus corniculatus	2	5 grms per m ²
Lathyrus pratensis	2	5 grms per m ²
Prunella vulgaris	2	5 grms per m ²
Leucanthemum vulgare	2	5 grms per m ²
Leontodon autumnalis	2	5 grms per m ²
Agrimonia eupatoria	2	5 grms per m ²
Centaurium erythraea	2	5 grms per m ²
Hypericum perforatum	2	5 grms per m ²
Ranunculus acris	2	5 grms per m ²
Plantago lanceolata	2	5 grms per m ²
Festuca rubra	2	5 grms per m ²

NB. Refer to outline specification notes.

WOODLAND MIX (WM): STANDARD TREES

Species	Size(cm)	Type	Spacing	WM1	WM2	WM3
Acer campestre	250-300cm	Std	4m centres	10	135	120
Betula pendula	250-300cm	Std	4m centres	15	135	120
Alnus glutinosa	250-300cm	Std	4m centres	20	235	220
Quercus robur	250-300cm	Std	4m centres	20	235	220
Sorbus aucuparia	250-300cm	Std	4m centres	10	135	100
TOTAL				75	875	780

NB. Refer to planting Detail 3 on Golder Associates Dwg No. GA/05588358/WHIT/P/002 and outline specification notes.

WOODLAND MIX (WM): TRANSPLANTS

Species	Size(cm)	Type	Spacing	WM1	WM2	WM3
Betula pendula	40-60cm	1u1	1m centres	45	660	580
Corylus avellana	40-60cm	1u1	1m centres	30	440	390
Crataegus monogyna	40-60cm	1u1	1m centres	30	440	390
Alnus glutinosa	40-60cm	1u1	1m centres	65	875	785
Pinus sylvestris	40-60cm	1u1	1m centres	45	660	585
Quercus robur	40-60cm	1u1	1m centres	65	875	785
Sorbus aucuparia	40-60cm	1u1	1m centres	30	440	380
TOTAL				305	3515	3115

NB. Refer to planting Detail 5 on Golder Associates Dwg No. GA/05588358/WHIT/P/002 and outline specification notes.

AMENITY GRASS SEED MIX (S)

Seed Mix	Sowing Rate
S1: British Seed House A4 Mix	25 grams per m ²
S2: British Seed Houses A3 Mix	25 grams per m ²

NB. Refer to outline specification notes.

AMENITY TURF (T)

Turf
Tillers Arena Amenity grade turf

NB. Refer to outline specification notes.

WOODLAND EDGE MIX (EM): FEATHERED TREES

Species	Size(cm)	Type	Spacing	EM1	EM2	EM3	EM4	EM5	EM6	EM7	EM8	EM9	EM10	EM11
Acer campestre	200-250cm	Fthd	4m centres	30	25	37	6	5	5	5	5	5	5	5
Betula pendula	200-250cm	Fthd	4m centres	35	35	42	6	15	15	10	5	5	5	60
Crataegus monogyna	200-250cm	Fthd	4m centres	25	20	32	6	10	10	10	5	5	5	5
Alnus glutinosa	200-250cm	Fthd	4m centres	40	45	52	11	10	10	15	5	10	5	5
Sorbus aucuparia	200-250cm	Fthd	4m centres	25	25	37	6	10	10	10	5	5	5	5
TOTAL				155	150	200	40	50	50	50	25	35	20	60

NB. Refer to planting Detail 4 on Golder Associates Dwg No. GA/05588358/WHIT/P/002 and outline specification notes.

WOODLAND EDGE MIX (EM): TRANSPLANTS

Species	Size(cm)	Type	Spacing	EM1	EM2	EM3	EM4	EM5	EM6	EM7	EM8	EM9	EM10	EM11
Acer campestre	40-60cm	1u1	1m centres	195	230	240	50	75	25	70	40	50	30	-
Betula pendula	40-60cm	1u1	1m centres	195	230	240	50	75	25	70	40	50	30	-
Corylus avellana	40-60cm	1u1	1m centres	380	380	475	95	125	50	120	60	80	50	-
Crataegus monogyna	40-60cm	1u1	1m centres	380	380	475	95	125	50	125	65	85	55	-
Ilex aquifolium	40-60cm	P9	1m centres	-	-	-	-	-	-	-	-	-	-	225
Quercus robur	40-60cm	1u1	1m centres	270	305	340	70	100	40	95	50	65	40	-
Sorbus aucuparia	40-60cm	1u1	1m centres	-	-	-	-	-	-	-	-	-	-	-
TOTAL				1420	1375	1770	360	450	190	430	230	295	185	225

NB. Refer to planting Detail 5 on Golder Associates Dwg No. GA/05588358/WHIT/P/002 and outline specification notes.

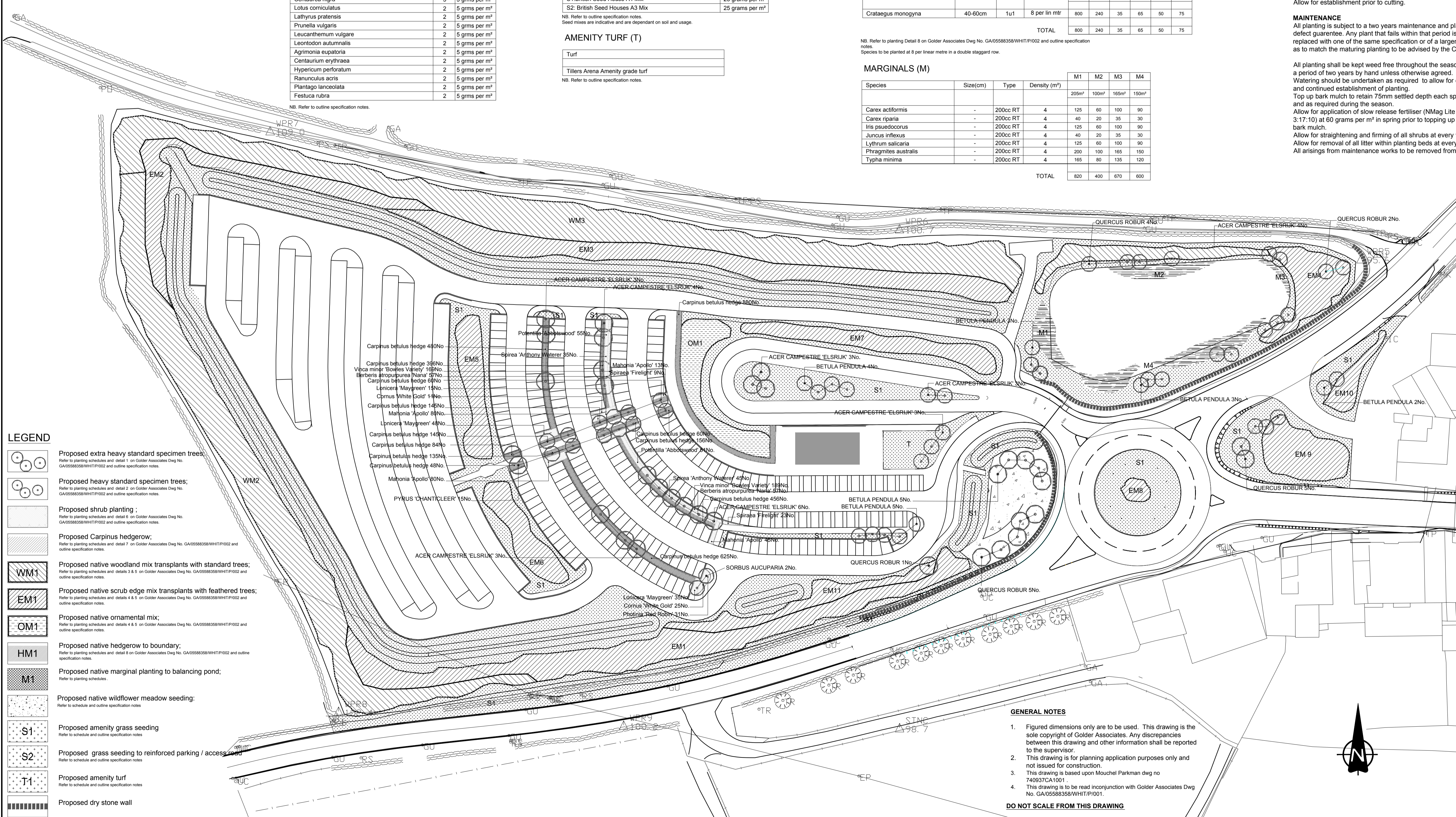
HEDGEROW MIX (HM): TRANSPLANTS

Species	Size(cm)	Type	Spacing	HM1	HM2	HM3	HM4	HM5	HM6
Crataegus monogyna	40-60cm	1u1	8 per lin mtr	800	240	35	65	50	75
TOTAL				800	240	35	65	50	75

NB. Refer to planting Detail 8 on Golder Associates Dwg No. GA/05588358/WHIT/P/002 and outline specification notes.

MARGINALS (M)

Species	Size(cm)	Type	Density (m ²)	M1	M2	M3	M4
Carex actiformis	-	200cc RT	4	125	60	100	90
Carex riparia	-	200cc RT	4	40	20	35	30
Iris pseudocorus	-	200cc RT	4	125	60	100	90
Juncus inflexus	-	200cc RT	4	40	20	35	30
Lythrum salicaria	-	200cc RT	4	125	60	100	90
Phragmites australis	-	200cc RT	4	200	100	165	150
Typha minima	-	200cc RT	4	165	80	135	120
TOTAL				820	400	670	600



LEGEND

- Proposed extra heavy standard specimen trees: Refer to planting schedules and detail 1 on Golder Associates Dwg No. GA/05588358/WHIT/P/002 and outline specification notes.
- Proposed heavy standard specimen trees: Refer to planting schedules and detail 2 on Golder Associates Dwg No. GA/05588358/WHIT/P/002 and outline specification notes.
- Proposed shrub planting: Refer to planting schedules and detail 6 on Golder Associates Dwg No. GA/05588358/WHIT/P/002 and outline specification notes.
- Proposed Carpinus hedgerow: Refer to planting schedules and detail 7 on Golder Associates Dwg No. GA/05588358/WHIT/P/002 and outline specification notes.
- Proposed native woodland mix transplants with standard trees: Refer to planting schedules and details 3 & 5 on Golder Associates Dwg No. GA/05588358/WHIT/P/002 and outline specification notes.
- Proposed native scrub edge mix transplants with feathered trees: Refer to planting schedules and details 4 & 5 on Golder Associates Dwg No. GA/05588358/WHIT/P/002 and outline specification notes.
- Proposed native ornamental mix: Refer to planting schedules and details 4 & 5 on Golder Associates Dwg No. GA/05588358/WHIT/P/002 and outline specification notes.
- Proposed native hedgerow to boundary: Refer to planting schedules and detail 8 on Golder Associates Dwg No. GA/05588358/WHIT/P/002 and outline specification notes.
- Proposed native marginal planting to balancing pond: Refer to planting schedules.
- Proposed native wildflower meadow seeding: Refer to schedule and outline specification notes.
- Proposed amenity grass seeding: Refer to schedule and outline specification notes.
- Proposed grass seeding to reinforced parking / access road: Refer to schedule and outline specification notes.
- Proposed amenity turf: Refer to schedule and outline specification notes.
- Proposed dry stone wall

GENERAL NOTES

- Figured dimensions only are to be used. This drawing is the sole copyright of Golder Associates. Any discrepancies between this drawing and other information shall be reported to the supervisor.
- This drawing is for planning application purposes only and not issued for construction.
- This drawing is based upon Mouchel Parkman dwg no 749837CA1001
- This drawing is to be read in conjunction with Golder Associates Dwg No. GA/05588358/WHIT/P/001.

DO NOT SCALE FROM THIS DRAWING

OUTLINE SPECIFICATION NOTES CON'D

SHRUB BEDS
Cultivation / Amelioration / Planting
 All planting areas to be cultivated to a full depth of 450mm where possible.
 Make up levels with imported approved topsoil where insufficient to make up 450mm depth.
 Apply 60grams per m² of NMag Lite NPK 3:17:10 or similar approved to entire shrub beds, cultivate in.
 Supply and spread minimum 50mm depth approved mushroom compost or similar approved to all shrub beds, thoroughly cultivate to full depth leaving a level surface and fine planting tith. Remove all debris, stones etc greater than 50mm and remove from site.

Mulch
 Supply and spread 75mm settled depth amenity grade bark mulch (or similar approved) to entire area of shrub beds. Allow for topping up after settlement. Make sure bark mulch is kept away from immediate area to base of shrubs as per the detail.

TURF AREAS
 Cultivate area prior to turfing to a depth of 100mm. Remove all stones, debris etc greater than 50mm. Gently consolidate prior to final cultivation.
 Apply Scotts Pre seeder fertiliser (or similar approved) NPK 9:7:7 at 70grams per m² prior to final cultivation.
 Final cultivation to be undertaken when soil is dry and workable. Cultivate to 25mm removing all clods, stone debris etc greater than 30mm.
 Allow for 25mm above adjacent kerb to allow for settlement. Leave a level area with no hollows or bumps.
 Turf area with Tillers Arena (or similar approved) amenity grade turf using accepted horticultural practices. Avoid walking on turf after completion.
 Allow for watering when required to aid early and continued establishment throughout the season.
 Allow for establishment prior to cutting.

MAINTENANCE
 All planting is subject to a two years maintenance and plant defect guarantee. Any plant that falls within that period is to be replaced with one of the same specification or of a larger size as to match the maturing planting to be advised by the CA.
 All grasses are to be kept weed free throughout the season for a period of two years by hand unless otherwise agreed.
 Watering should be undertaken as required to allow for early and continued establishment of planting.
 Top up bark mulch to retain 75mm settled depth each spring and as required during the season.
 Allow for application of slow release fertiliser (NMag Lite NPK 3:17:10) at 60 grams per m² in spring prior to topping up of bark mulch.
 Allow for straightening and firming of all shrubs at every visit.
 Allow for removal of all litter within planting beds at every visit.
 All arisings from maintenance works to be removed from site.

MAINTENANCE
 All planting is subject to a two years maintenance and plant defect guarantee. Any plant that falls within that period is to be replaced with one of the same specification or of a larger size as to match the maturing planting to be advised by the CA.
 All grasses are to be kept weed free throughout the season for a period of two years by hand unless otherwise agreed.
 Watering should be undertaken as required to allow for early and continued establishment of planting.
 Top up bark mulch to retain 75mm settled depth each spring and as required during the season.
 Allow for application of slow release fertiliser (NMag Lite NPK 3:17:10) at 60 grams per m² in spring prior to topping up of bark mulch.
 Allow for straightening and firming of all shrubs at every visit.
 Allow for removal of all litter within planting beds at every visit.
 All arisings from maintenance works to be removed from site.

MAINTENANCE
 All planting is subject to a two years maintenance and plant defect guarantee. Any plant that falls within that period is to be replaced with one of the same specification or of a larger size as to match the maturing planting to be advised by the CA.
 All grasses are to be kept weed free throughout the season for a period of two years by hand unless otherwise agreed.
 Watering should be undertaken as required to allow for early and continued establishment of planting.
 Top up bark mulch to retain 75mm settled depth each spring and as required during the season.
 Allow for application of slow release fertiliser (NMag Lite NPK 3:17:10) at 60 grams per m² in spring prior to topping up of bark mulch.
 Allow for straightening and firming of all shrubs at every visit.
 Allow for removal of all litter within planting beds at every visit.
 All arisings from maintenance works to be removed from site.

NATIVE TREES, TRANSPLANTS & HEDGEROW
 All planting shall be kept weed free throughout the season for a period of two years. Allow for a 500mm radius weed free area to each transplant and tree throughout the season. Apply an approved translocated herbicide a minimum of three times per season.
 Allow for strimming all grass areas between plants within plantations a minimum of three times during the season or as required to prevent grass growing above 75mm. Leave arisings. All hedgerows shall be kept in a weed free condition along its entire length and a minimum of 500mm from the outer edge of the hedgerow line. Apply an approved translocated herbicide a minimum of three times per season.
 All Tubex guards / spiral guards are to be kept free from weed growth throughout the season by hand, removing arisings from site. All build up of soils within guards are to be cleaned out as required.
 All guards / ties / stakes are to be checked for damage at every visit or after strong winds.
 All guards should be straightened and broken stakes replaced as required.
 Tree ties shall be checked for damage or potential rubbing at every visit.
 Hedgerows should be 'topped' after their second season if required to promote bushy growth. Remove arisings.
 Watering should be undertaken as required to allow for early and continued establishment of planting if there is a prolonged period of drought.
 All arisings from maintenance works to be removed from site.
 All fencing is to be checked for damage at every visit. Allow for restraining and replacing any damage as required.

WILDFLOWER MEADOW
 Year 1: Sow in mid to early September. Allow to establish within the following season and cut once (topping growth) in late August to approx 80mm leaving the arisings. Carry out selective herbicide spot treatment of weeds as required.
 Year 2: Allow to establish and cut to approx. 80mm in April and late August leaving the arisings. Carry out selective herbicide spot treatment of weeds as required.
 Year 3: Allow to establish and cut in mid August, remove arisings after two weeks.

GENERAL

ALL PLANTING
 All planting is to be carried out during the next available planting season following completion of construction works subject to agreement with North York Moors National Park in order to ensure survival rates and availability of stock.

ALL PLANTING
 All trees and shrubs shall be to BS3936 and handled in accordance with BS4428. Sizes as indicated on drawing. Planting to be carried out in accordance with and as per details shown on the drawing. Regular monitoring of the planting should be carried out, including straightening refirming at every visit.

OUTLINE SPECIFICATION NOTES

NATIVE STANDARD AND FEATHERED TREES
 All trees are to be planted in random odd numbered groups of 3, 5, 7 & 9 throughout the native woodland and scrub edge mix at an average of 4m centres as instructed on site by the CA. Allow for native transplants to be planted between groups of trees. Avoid large regular groups or straight lines. Refer to schedules for numbers.

NATIVE TRANSPLANTS
 All native transplant to be planted in accordance with and as per Detail 4 on Golder Associates Dwg No. GA/0629264_RES_A_001.