

Wendy Strangeway

From: Helen Webster
Sent: 17 November 2015 15:53
To: Planning
Subject: FW: NYM/2012/0796/FL - Fox and Rabbit Holiday Cottages, Lockton
Attachments: 20151117154441015.pdf; ATT00001.htm

From: Margaret Mackinder
Sent: 17 November 2015 15:03
To: Helen Webster
Cc: Gill Hymas
Subject: Re: NYM/2012/0796/FL - Fox and Rabbit Holiday Cottages, Lockton

17 NOV 2015
OK

Dear Helen

We have previously spoken about the issue of the proximity to the pub and I believe you felt that in the wider overall context this was not a major issue. The more recent issue over the Farm Access needs some clarification as the assumptions that are made about it in the letter from the Environmental Health Department are incorrect.

I attach an annotated aerial view of the farm showing the various access options..

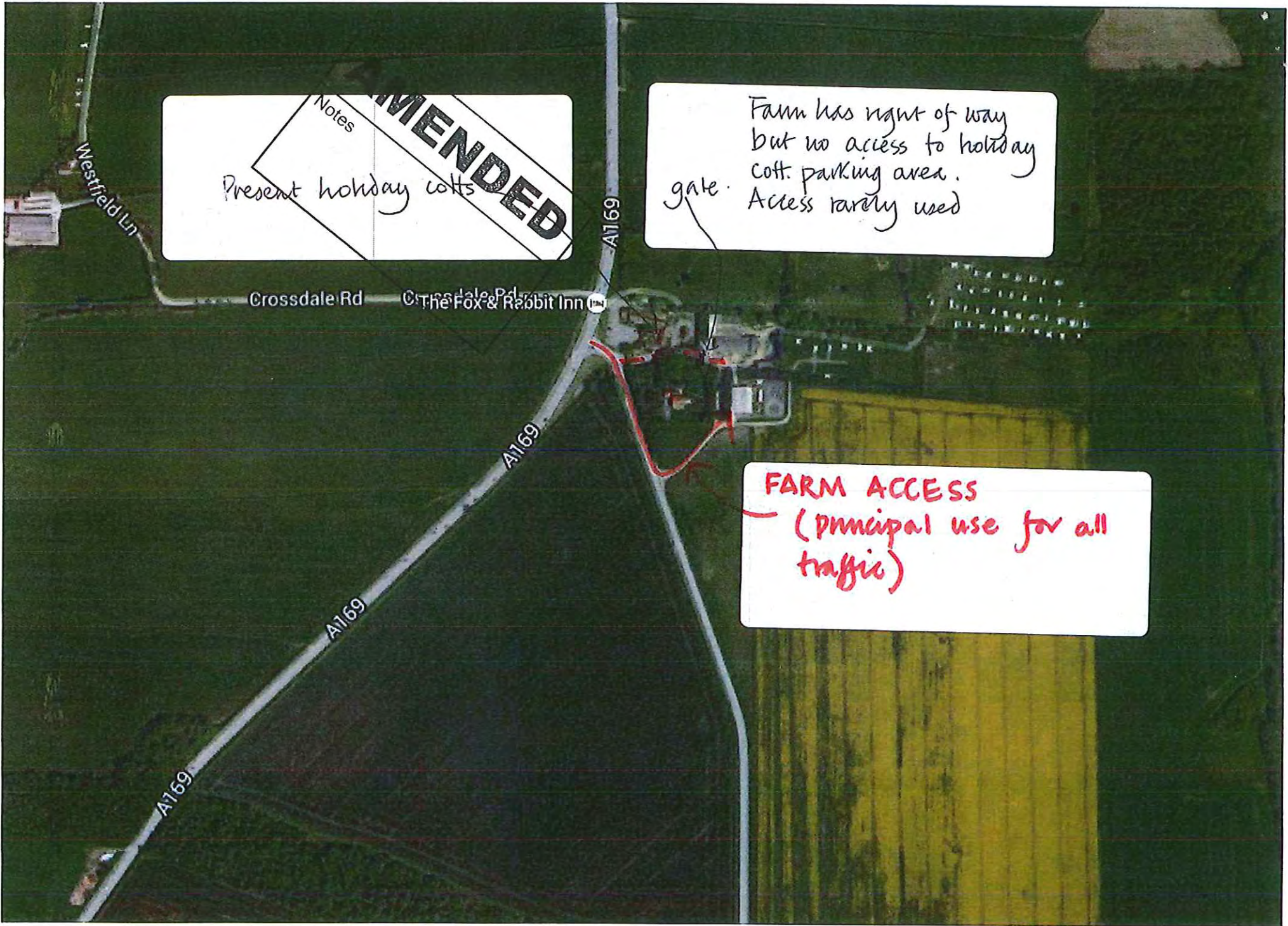
The principal established access to the farm is via the road which leads southeastwards (I believe to Dalby). This is the better access into the farm and is always used by farm vehicles because it is straighter and wider. The farm does have an historic right of access via a more northerly access shown dotted in red but this leads through a gate which is kept shut and is rarely used because it is of inferior quality. The farm has no rights whatever to turn or use the area designated as part of the application relating to the existing holiday cottages for any use, including parking and turning.

I hope this clarifies the matter. Please contact me if you need further information
kind regards

Margaret
Margaret Mackinder RIBA

For and on behalf of
Stone and Associates
RIBA Chartered Architects & Designers

| |
|----------------|
| AMENDED |
| Notes |



Notes
Present holiday cottages
RECOMMENDED

Farm has right of way
but no access to holiday
cott. parking area.
Access rarely used
gate.

FARM ACCESS
(principal use for all
traffic)