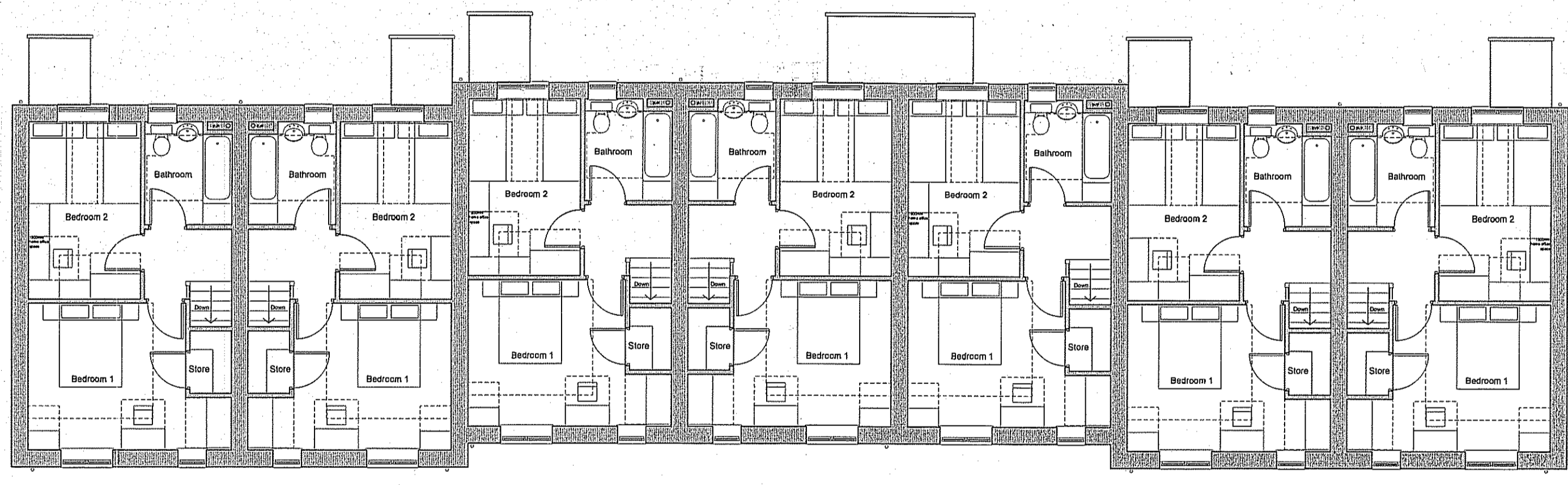


Schedule of Materials

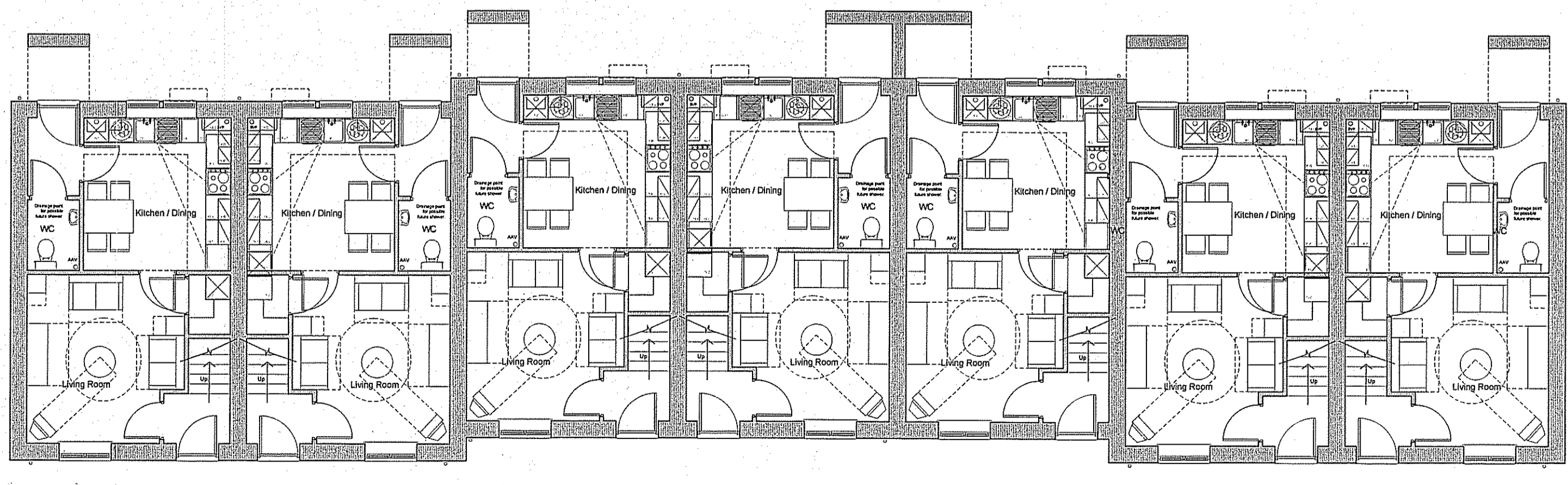
1. Natural local dressed and toolled stone in variety of 140, 215 and 290mm course heights, flush pointed with hydraulic lime mortar.
2. Red facing brick chimneys flush pointed with hydraulic lime mortar.
3. Natural grey slate roof tiles.
4. Clay Pantile roof tiles.
5. Stone heads, sills & mullions.
6. White gloss painted timber double glazed sash look-a-like windows. Allan Brothers vertical slide and tilt or similar.
7. Coloured engineered timber door. Masterdor or similar approved.
8. Black GRP look-a-like cast iron gutters with galvanized metal brackets.
9. Traditional external lantern style security light on PIR.
10. Air source heat pump.

Revisions:

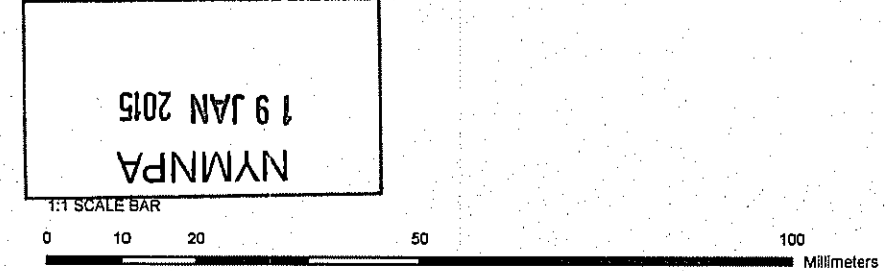
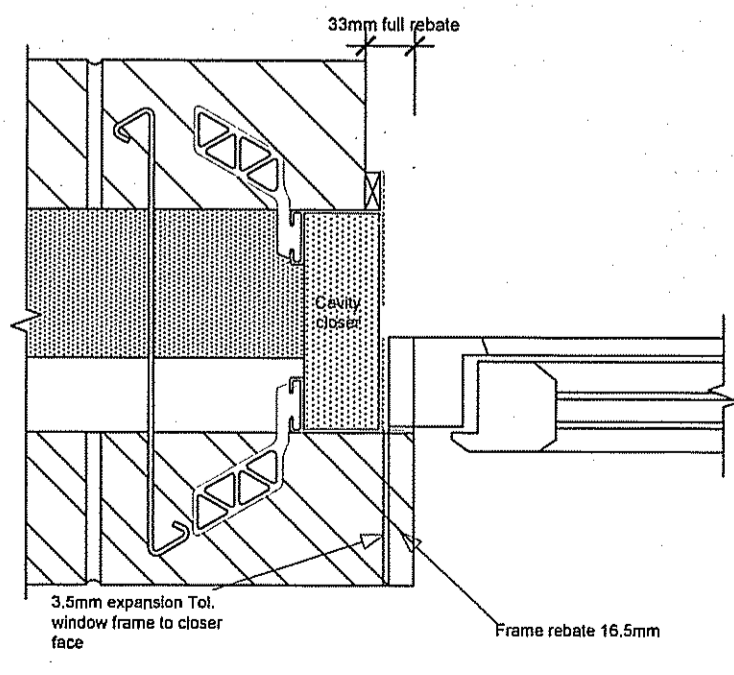
Rev.	Date	By/Chk	Note
Rev A	14/01/2013	TSP/PG	Exterior lighting added. Ground source heat pumps indicated. Window detail added.
Rev B	22/01/2013	TSP/PG	Exterior lighting amended. Door styles amended.
Rev C	13/03/2013	TSP/PG	Materials amended on elevations. Materials schedule updated.
Rev D	15/03/2013	TSP/PG	Materials schedule amended.
Rev E	09/04/2013	TSP/PG	Water tabling detail added to roof between plots 4 and 5.
Rev F	17/04/2013	TSP/PG	Water tabling detail removed from roof between plots 4 and 5. Chimney Retained.
Rev G	01/07/2014	TSP/PG	Eaves and ridge dimensions added.
Rev H	18/01/2015	TSP/PG	Air source heat pump locations amended.



First Floor Plan
Plot 1 - 2B4P Plot 2 - 2B4P Plot 3 - 2B4P Plot 4 - 2B4P Plot 5 - 2B4P Plot 6 - 2B4P Plot 7 - 2B4P



Ground Floor Plan
Plot 1 - 2B4P Plot 2 - 2B4P Plot 3 - 2B4P Plot 4 - 2B4P Plot 5 - 2B4P Plot 6 - 2B4P Plot 7 - 2B4P



Plans & Elevations
for Plots 1 to 7
High Street, Egton
Home Group

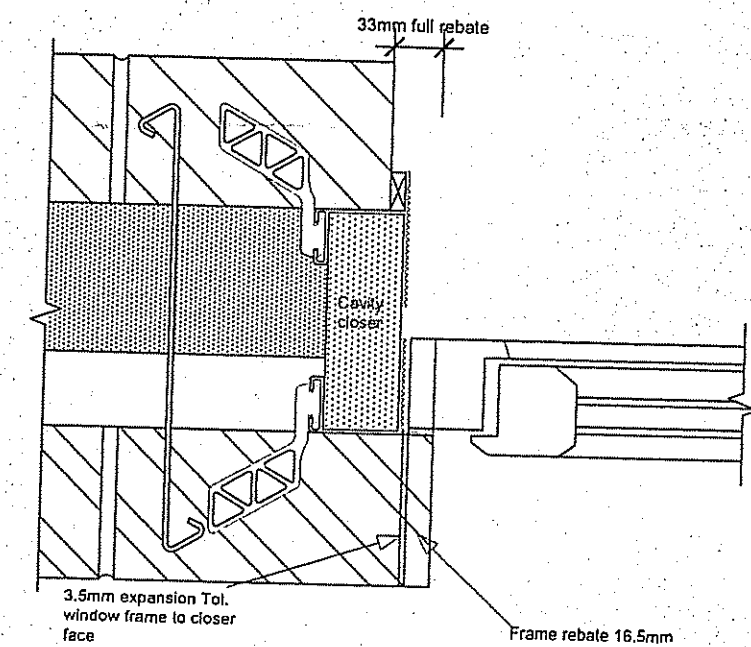
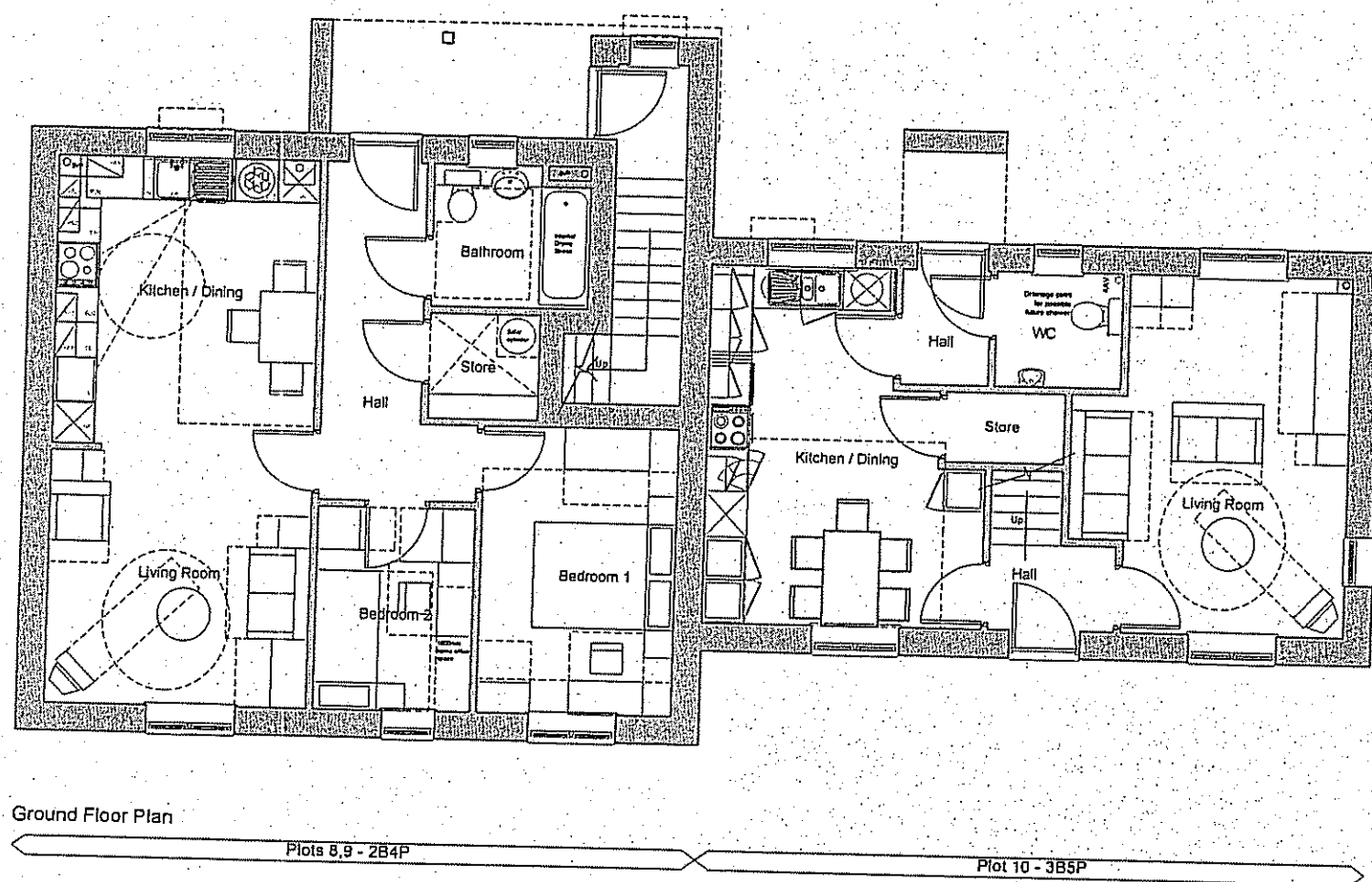
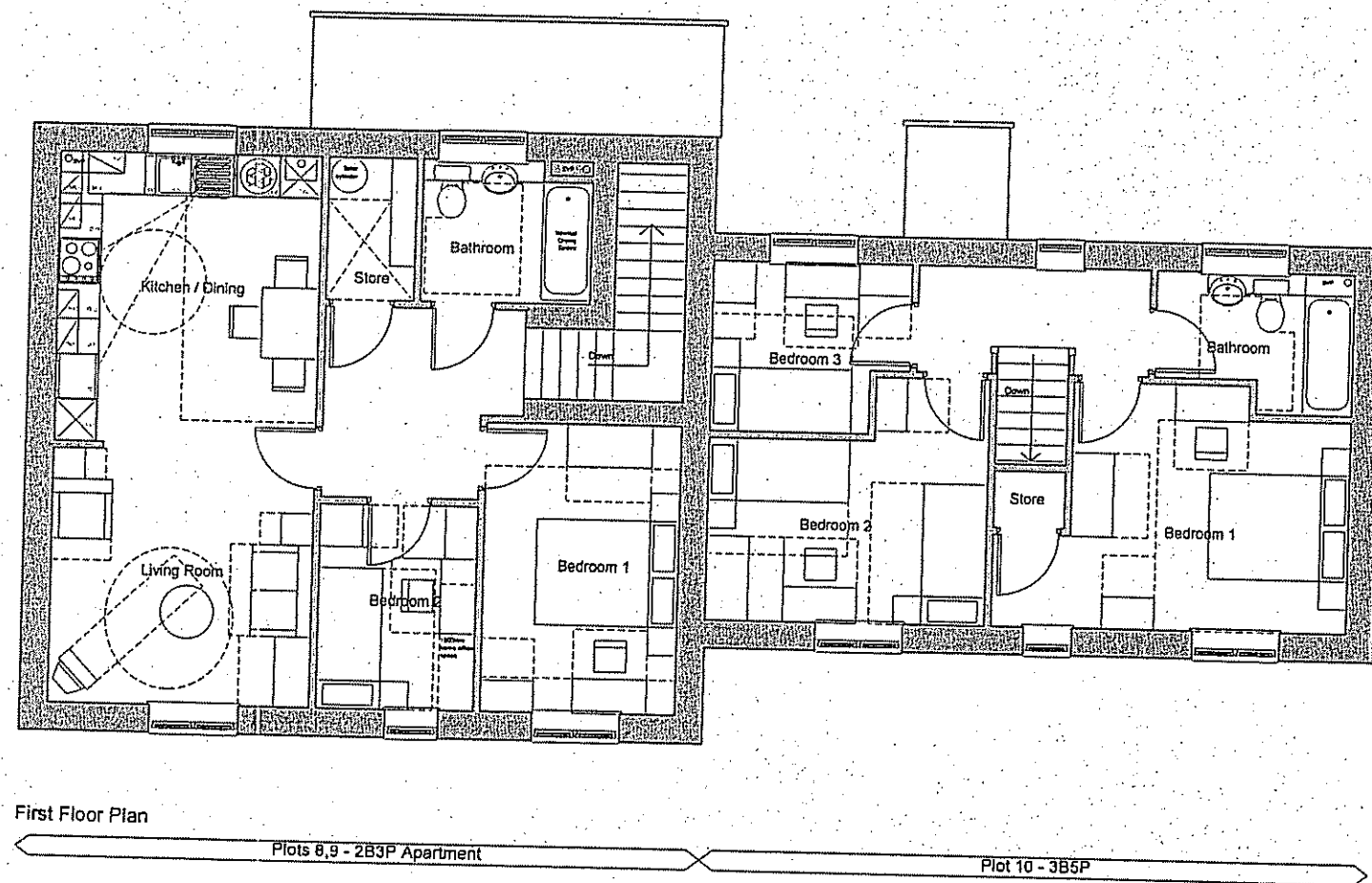
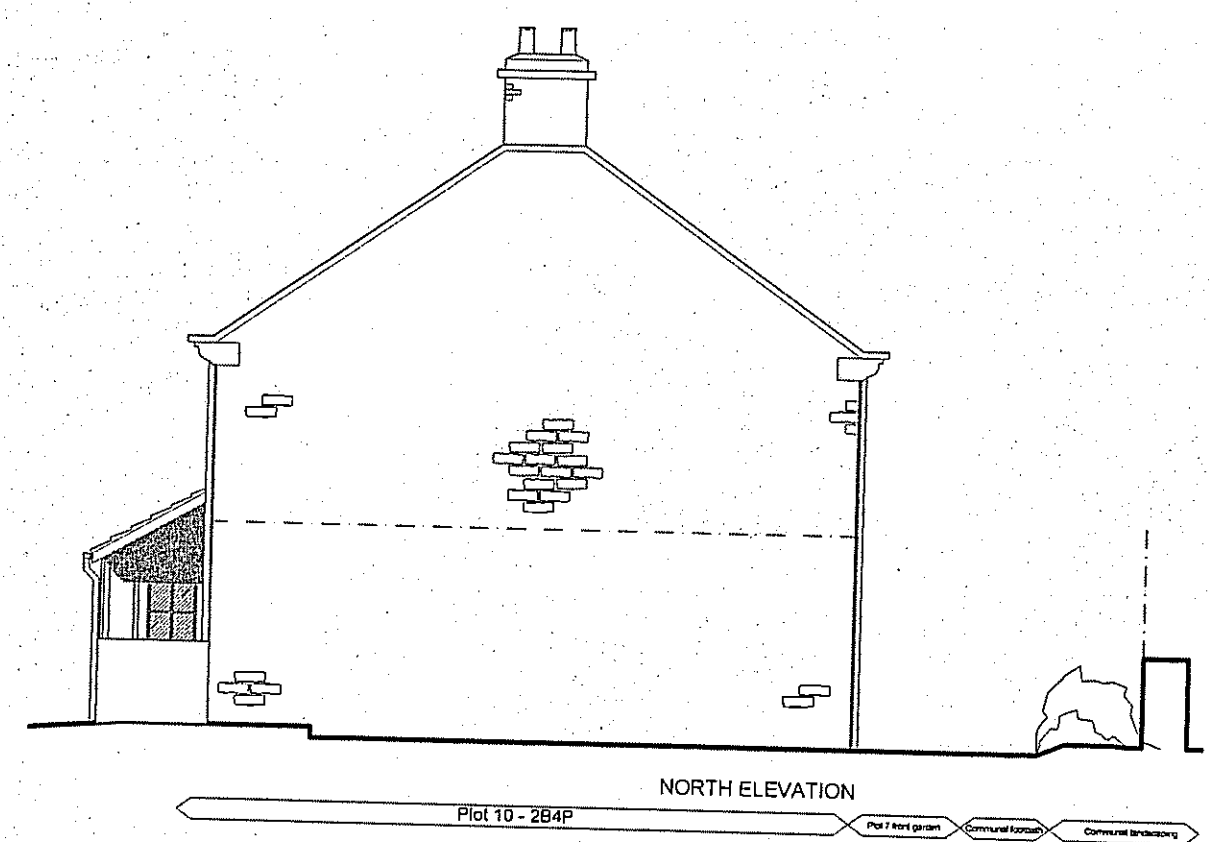
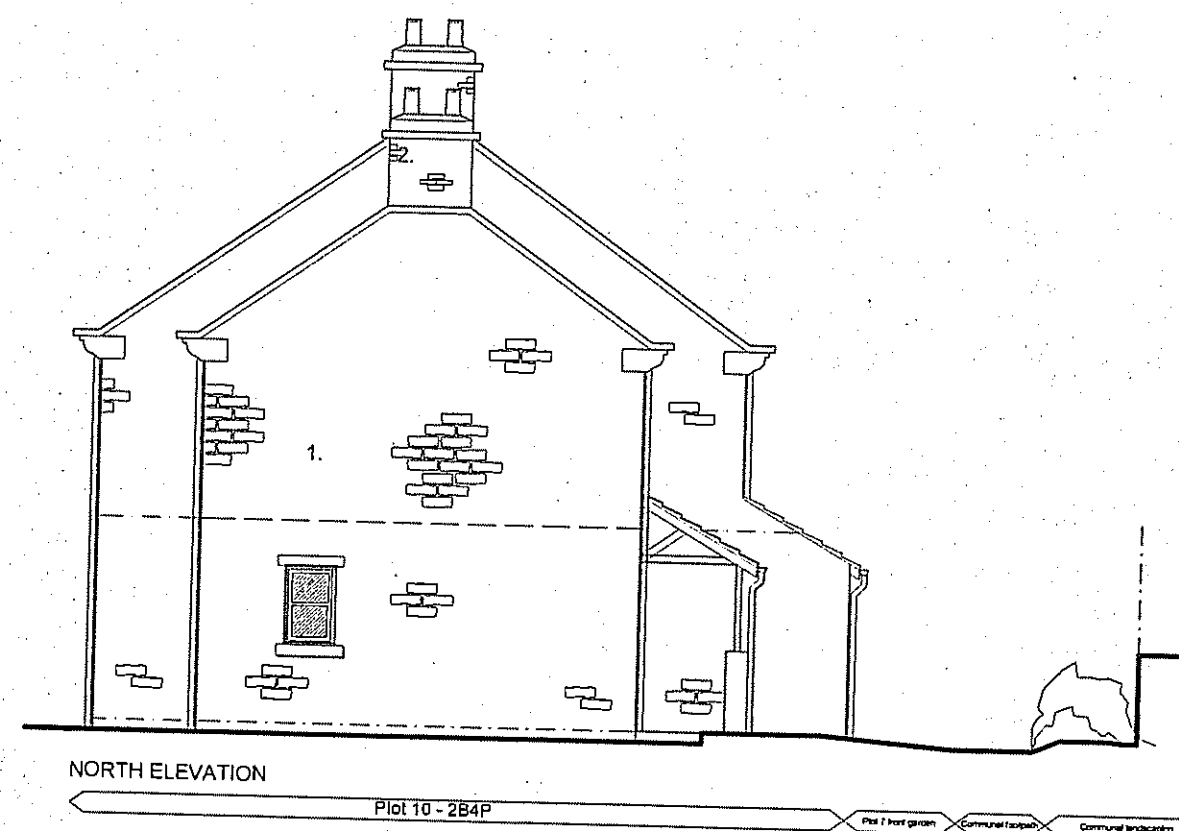
home group

Drawing Status

<input checked="" type="checkbox"/> preliminary	<input type="checkbox"/> planning
<input type="checkbox"/> information	<input type="checkbox"/> tender
<input type="checkbox"/> comment	<input type="checkbox"/> construction
<input type="checkbox"/> approval	<input type="checkbox"/> record/as built

Scale 1:100 @ a1
Date Sept 2012
Drawn/Checked TS/PDG
Dwg.No 1700.63.115J

Acanthus WSM Architects
Woodhall, Woodhall Lane, Leeds LS28 5NY.



- Schedule of Materials**
1. Natural local dressed and tooled stone in variety of 140, 215 and 290mm course heights, flush pointed with hydraulic lime mortar.
 2. Red facing brick chimneys flush pointed with hydraulic lime mortar.
 3. Natural grey slate roof tiles.
 4. Clay Pantile roof tiles.
 5. Stone heads, cills & mullions.
 6. White gloss painted timber double glazed sash look-a-like windows. Alan Brothers vertical slide and tilt or similar.
 7. Coloured engineered timber door. Masterdoor or similar approved.
 8. Black GRP look-a-like cast iron gutters with galvanized metal brackets.
 9. Traditional external lantern style security light on PIR.
 10. Air source heat pump.

- © Acanthus WSM Architects
- The general contractor is responsible for the verification of all dimensions on site and the architect is to be informed of any discrepancy.
- The status of information contained in a computer copy of this drawing shall be limited to that conveyed by the paper copy.
- Design Criteria
- Site to comply with the following design criteria subject to confirmation of the form of construction and assessment by an external accredited assessor.
- Design and Quality Standards: (NA)
 - Code for Sustainable Homes Level: (NA)
 - BREEM Rating: (NA)
 - Lifetime Homes: (No)
 - Building For Life Minimum Score: (NA)
 - Secured by Design: (NA)

Revisions:

Rev. No	Date	By/Chk
Rev B	14/01/2013	TS/DPG
Exterior lighting added. Ground source heat pumps indicated. Window detail added.		
Rev C	22/01/2013	TS/DPG
Exterior lighting amended. Door styles amended.		
Rev D	13/03/2013	TS/DPG
Materials amended on elevations. Materials schedule updated.		
Rev E	15/03/2013	TS/DPG
Materials schedule amended.		
Rev F	01/07/2014	TS/DPG
Eaves and ridge dimensions added.		
Rev G	19/01/2015	TS/DPG
Air source heat pump locations amended.		

NYMNP
19 JAN 2015

home group

Drawing Status

<input checked="" type="checkbox"/> preliminary	<input type="checkbox"/> planning
<input type="checkbox"/> information	<input type="checkbox"/> tender
<input type="checkbox"/> comment	<input type="checkbox"/> construction
<input type="checkbox"/> approval	<input type="checkbox"/> records/built

Scale: 1:100 @ a1
Date: Sept 2012
Drawn/Checked: TS/DPG
Dwg No: 1700.63.116G

Acanthus WSM Architects

Woodhall, Woodhall Lane, Leeds LS28 5NY.

Plans & Elevations
for Plots 8 to 10
High Street, Egton
Home Group

