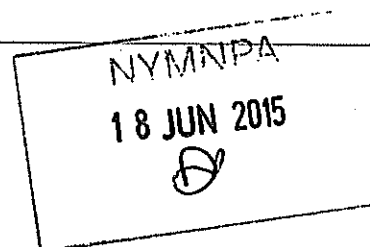


**Wendy Strangeway**

**From:** Jill Bastow  
**Sent:** 22 June 2015 15:42  
**To:** Planning  
**Subject:** FW: York House Caravan Park  
**Attachments:** 777.20150618.SK001a.pdf

Please book in and print off for 2015/0198, thanks.

**From:** Chris Megson  
**Sent:** 18 June 2015 11:21  
**To:** Jill Bastow  
**Subject:** FW: York House Caravan Park



Hi Jill,

Please find attached the layout drawing demonstrating accordance with the Highway Authority's comments. From my understanding, it looks like we may be required to provide additional information concerning the exact nature of surface water discharge. Could you indicate whether this could be secured by condition?

Also, do we need to extend the determination date again while you re-consult?

Thanks,

Chris

**From:** Terry Dale  
**Sent:** 18 June 2015 10:29  
**To:** Chris Megson  
**Subject:** RE: York House Caravan Park

Hi Chris,

As discussed, please find attached the layout drawing showing the revised location of the proposed access. The relocation of the access is as a consequence of meeting the highway authorities requirement to achieve a 45m visibility splay to the right, in fact, we can only achieve 43m without impacting on third party land.

In order to achieve to the 33m to the left, the splay encroaches into the adjacent access which, as we discussed is assumed not to be third party land. The level difference is such, however, that the embankment will need to be set back and potentially retained.

With regards to the surface water discharge and reference to the Yorkshire Water correspondence, there is no capacity to discharge into the existing surface water system. In any event, however, the hierarchy for discharge is to soak away, infiltration system and then to a watercourse. Testing of subsoil infiltration and soak away design will be required to be submitted and agreed with the drainage and highway authorities.

There is also a requirement, as a consequence of the re-sited access, to relocate the telegraph pole. The relocation and siting will need to be agreed with the British Telecom. It is advisable the Utility enquiries are undertaken to establish the implications of the providing the access on all services including electrical, communications and gas infrastructure. Diversions/protection of these services may be required in order to facilitate the access.

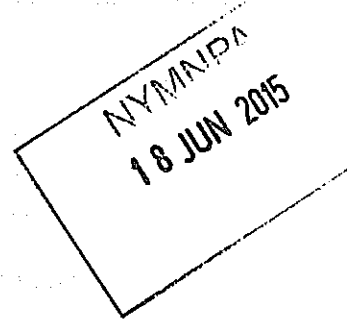
As discussed, these are not construction drawings but are indented to demonstrate that the access can be accommodated in accordance the LHA officer's original comments. If construction drawings are required, we would be happy to provide you with a fee proposal, this would include for collection of utility information and liaison with their representatives to determine the requirements for service diversion.

I trust the drawing meets with your approval.

Kind regards

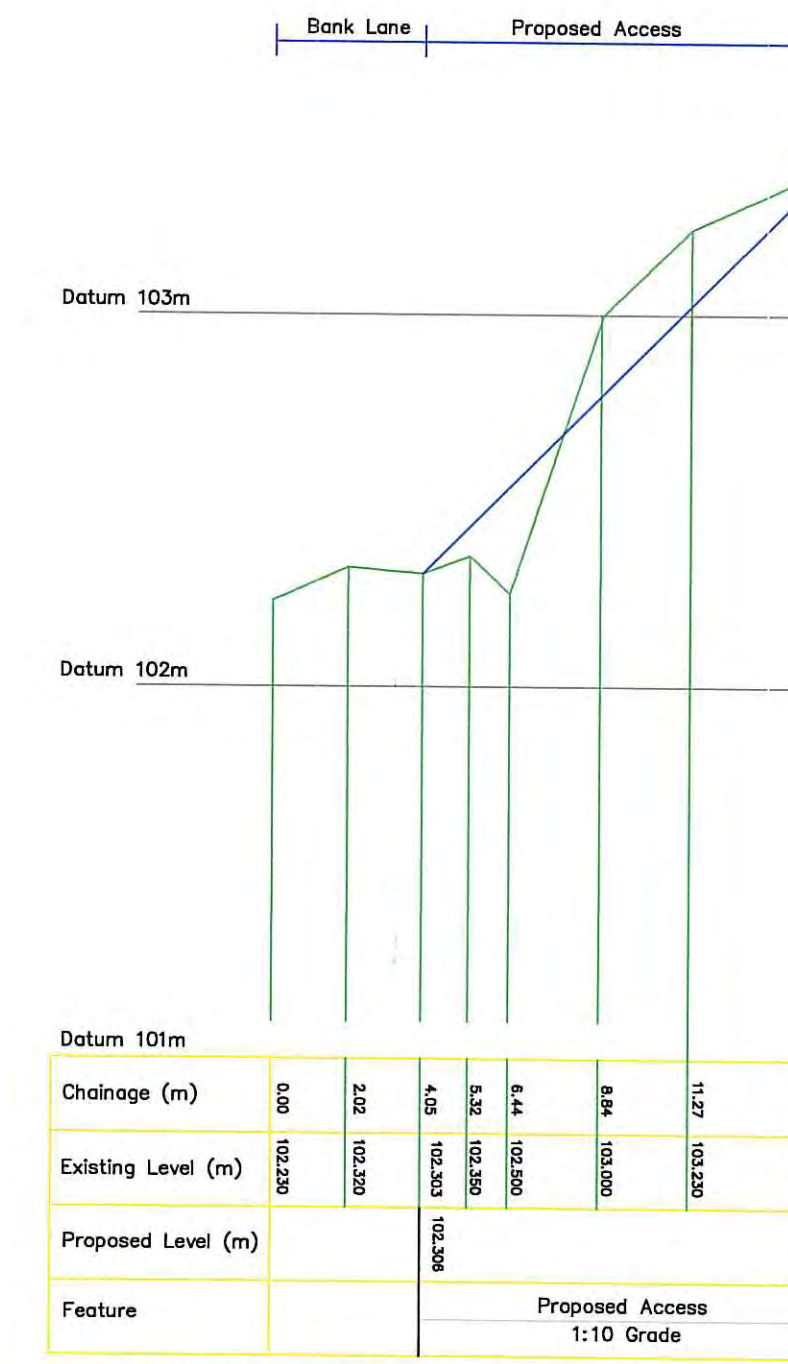
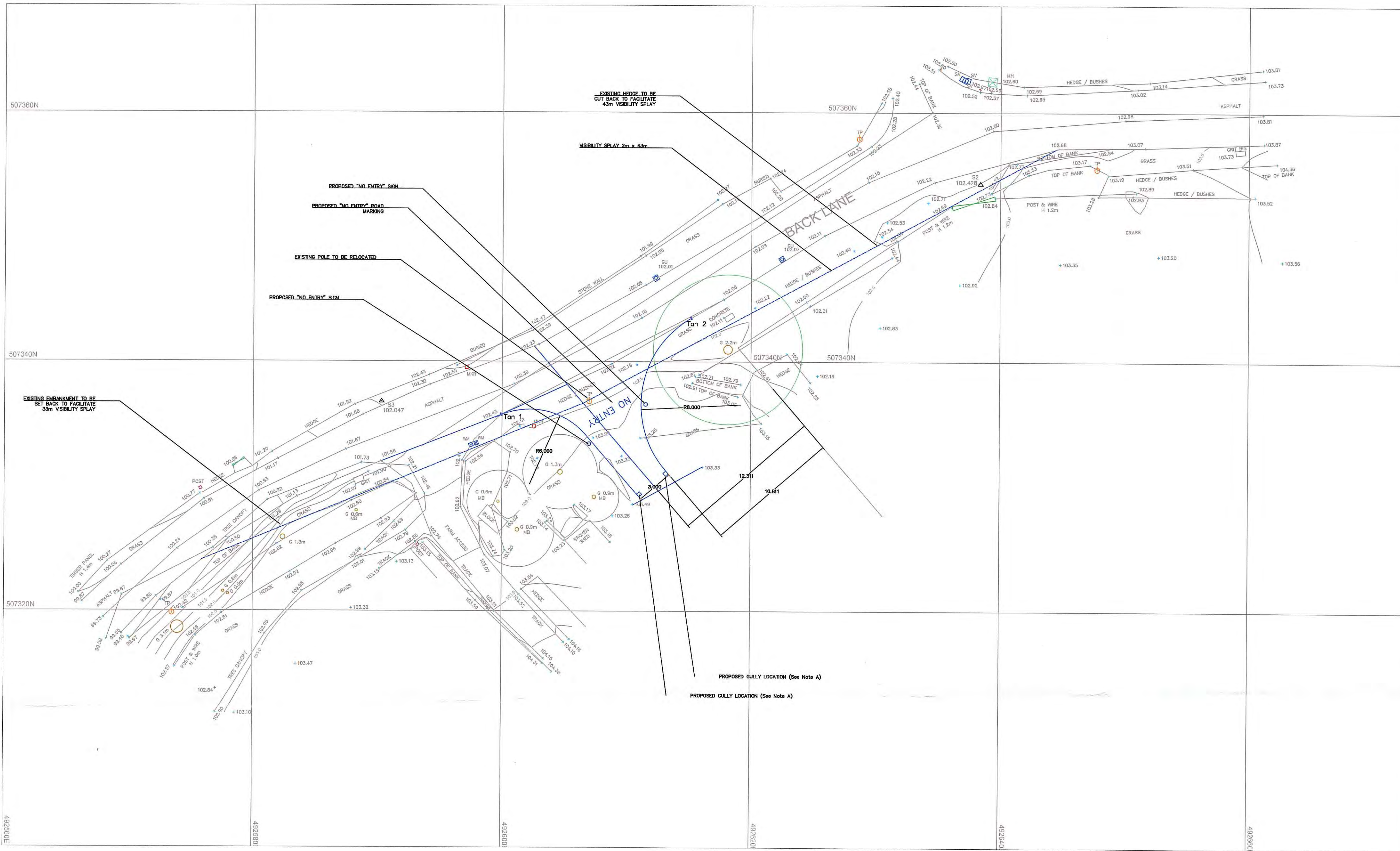
Terry

Terry Dale  
Director



Travel Plan Services Ltd  
The Loft, Dearden Gallery, Dearden Street, Ossett, Wakefield, WFS 8NR \*NEW\*

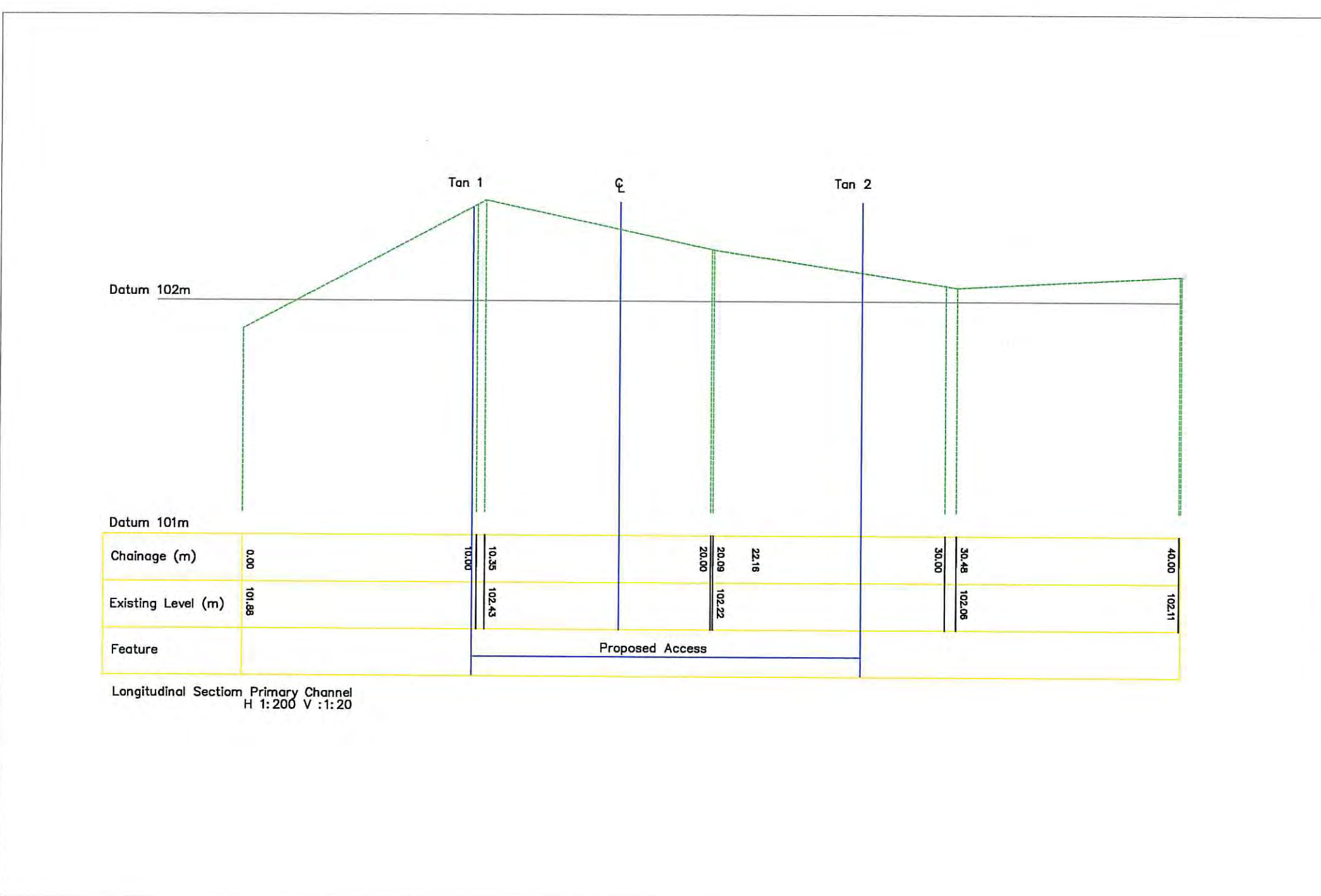




Longitudinal Section Proposed Access Road Centerline  
H 1:200 V 1:20

**AMENDED**

Notes



Longitudinal Section Primary Channel  
H 1:200 V 1:20

## Notes

- Surface water drainage to discharge to Soakaway unless otherwise agreed. The hierarchy for discharge shall be soakaway, infiltration system and then to a watercourse. Consultation and agreement with Yorkshire Water is required.
- Utility enquiries should undertaken to establish the need for service diversion or protection
- Not for construction purposes.

## York House Caravan Park Bank Lane Whitby Proposed Access Road Arrangement

DWG. 777.20150618.SK001

Scale 1:200 @ A1

Travel Plan Services Ltd  
The Loft  
Dearden Gallery  
Dearden Street  
Ossett  
Wakefield  
WF5 8NR

**Travel Plan  
Services**

NYM/NPA  
18 JUN 2015