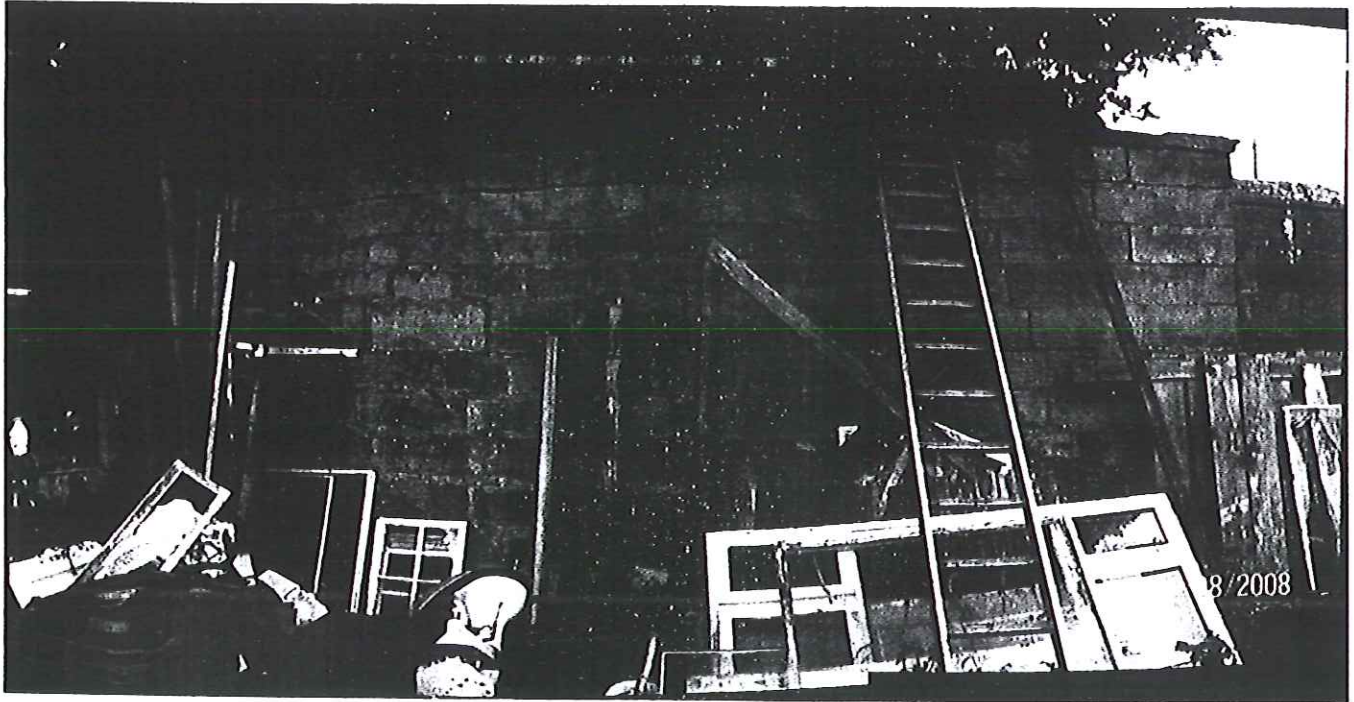
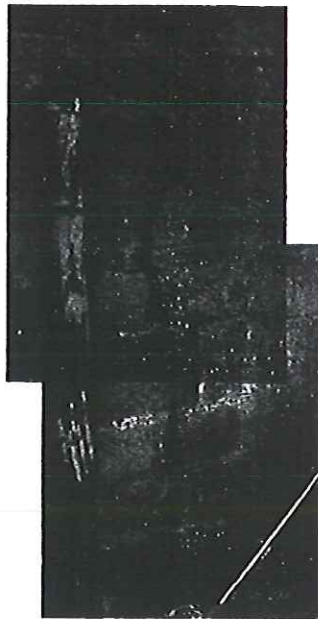


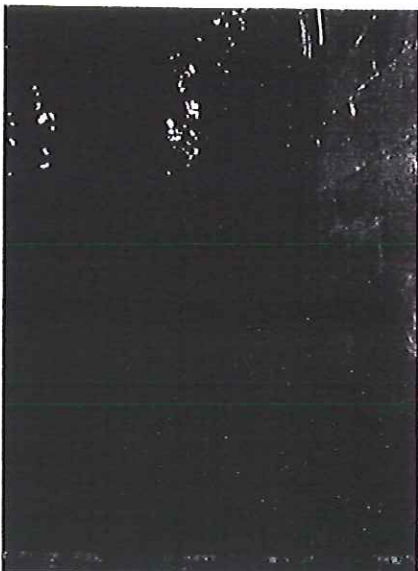
PHOTOGRAPHS
SHOWING TYPICAL TREE DAMAGE TO WALL AT PARK HALL AISLABY



There are at least 7nr. Significant vertical cracks along the short length of wall shown above. Even on this small photograph the cracks are quite clearly visible.



10A
- 8 JUL 2015



Close proximity of mature tree

