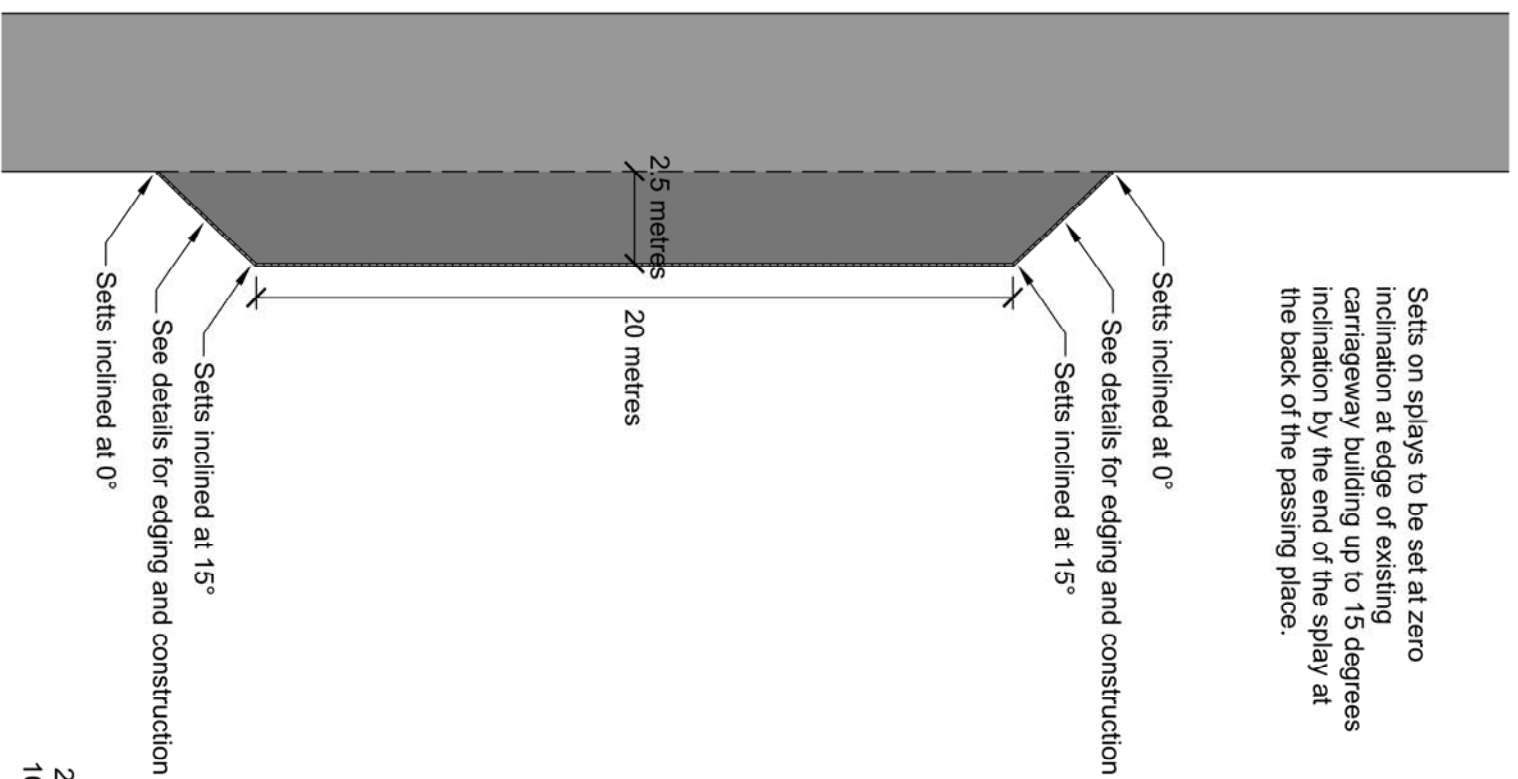


Setts on splay to be set at zero inclination at edge of existing carriageway building up to 15 degrees inclination by the end of the splay at the back of the passing place.



### Typical Layby Construction Plan

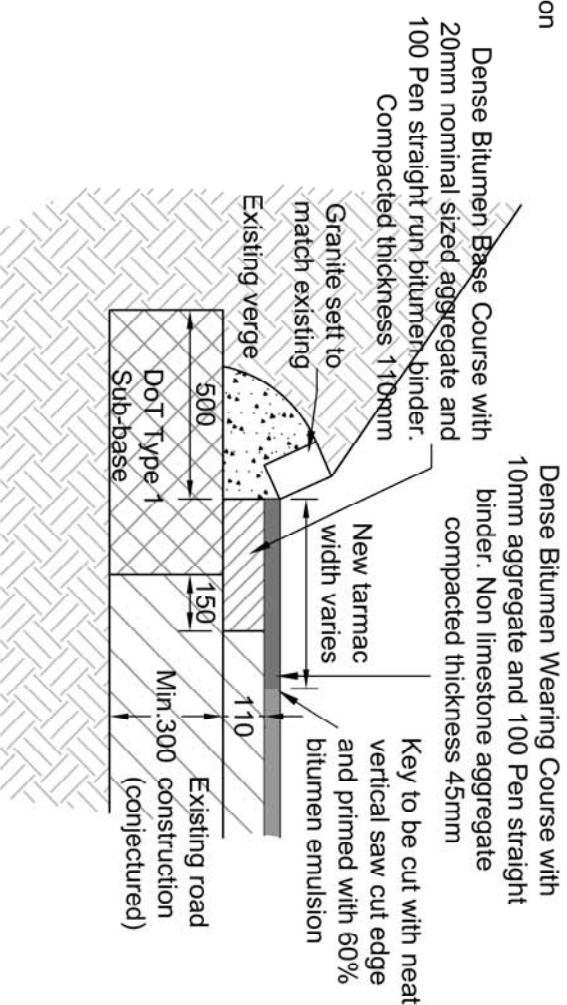
Scale 1:200

See details for edging and construction

Setts inclined at 15°

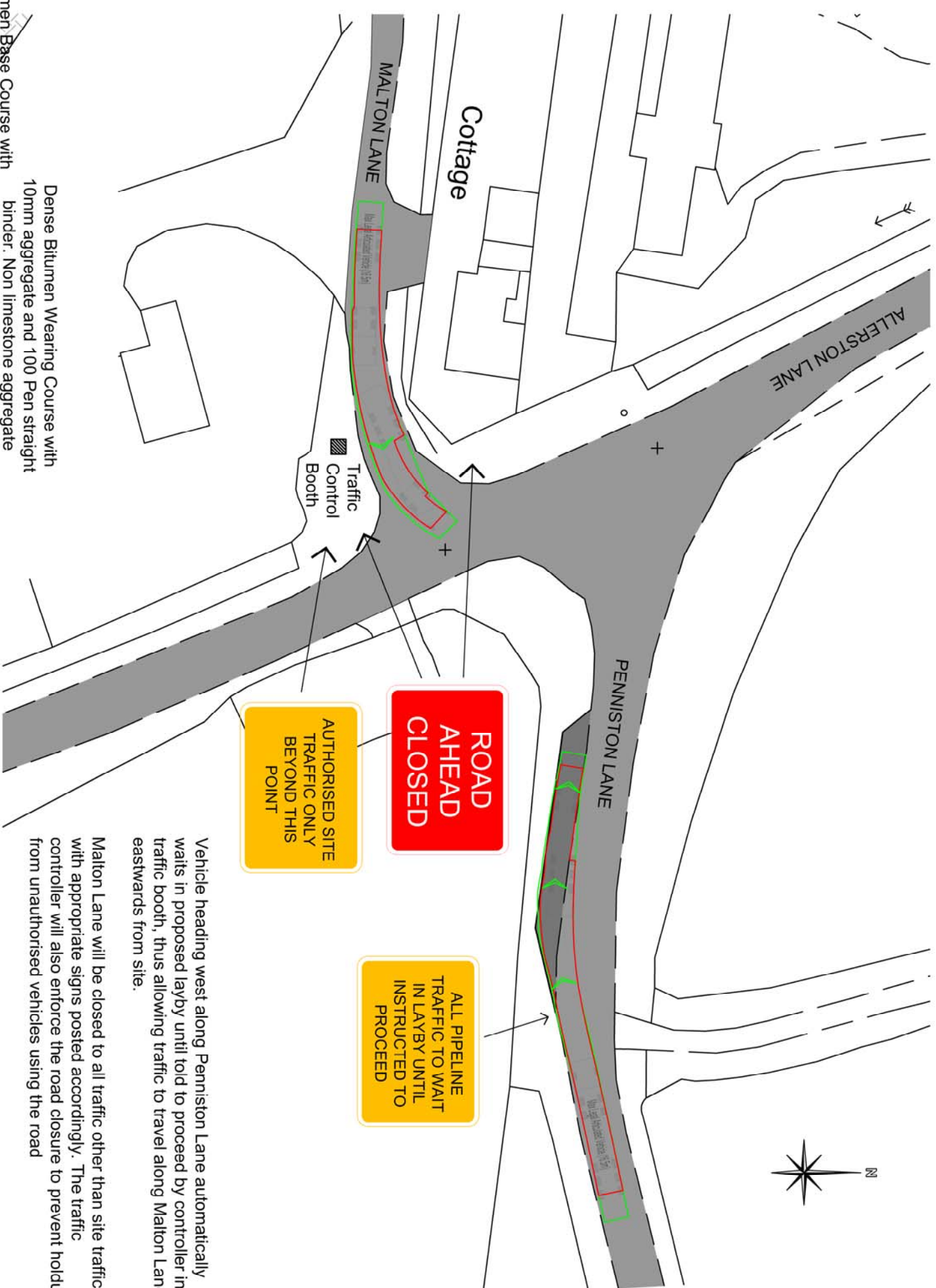
Setts inclined at 0°

2.5 metres  
20 metres



### Proposed Layby Construction Details

Scale 1:20



### Proposed Traffic Control on Malton Lane

Scale 1:500

Vehicle heading west along Penniston Lane automatically waits in proposed layby until told to proceed by controller in traffic booth, thus allowing traffic to travel along Malton Lane eastwards from site.

Malton Lane will be closed to all traffic other than site traffic with appropriate signs posted accordingly. The traffic controller will also enforce the road closure to prevent holdups from unauthorised vehicles using the road



Figure 8.8 - Proposed Layby on Penniston Lane

