



Notes:
 Unless indicated, this drawing is for information only.
 Do not scale from this drawing for purposes other than
 planning application ref: Doves Nest Farm Mine and
 MFS Application September 2014.
 All dimensions to be checked on site.
 0 75m
 Drwg. original size: A0

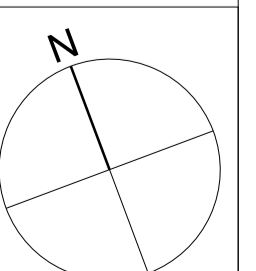
Revisions:	
Date:	Rev: Note:
25.09.14	0 Planning Issue
10.02.15	1 Updated in accordance with NLP's Schedule of Changes for the SEI submission.
11.02.15	2 Existing trees added to site plan.

Revisions:			
Check:	Date:	Rev:	Note:
PC			
RW			
RW			

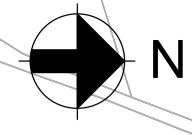
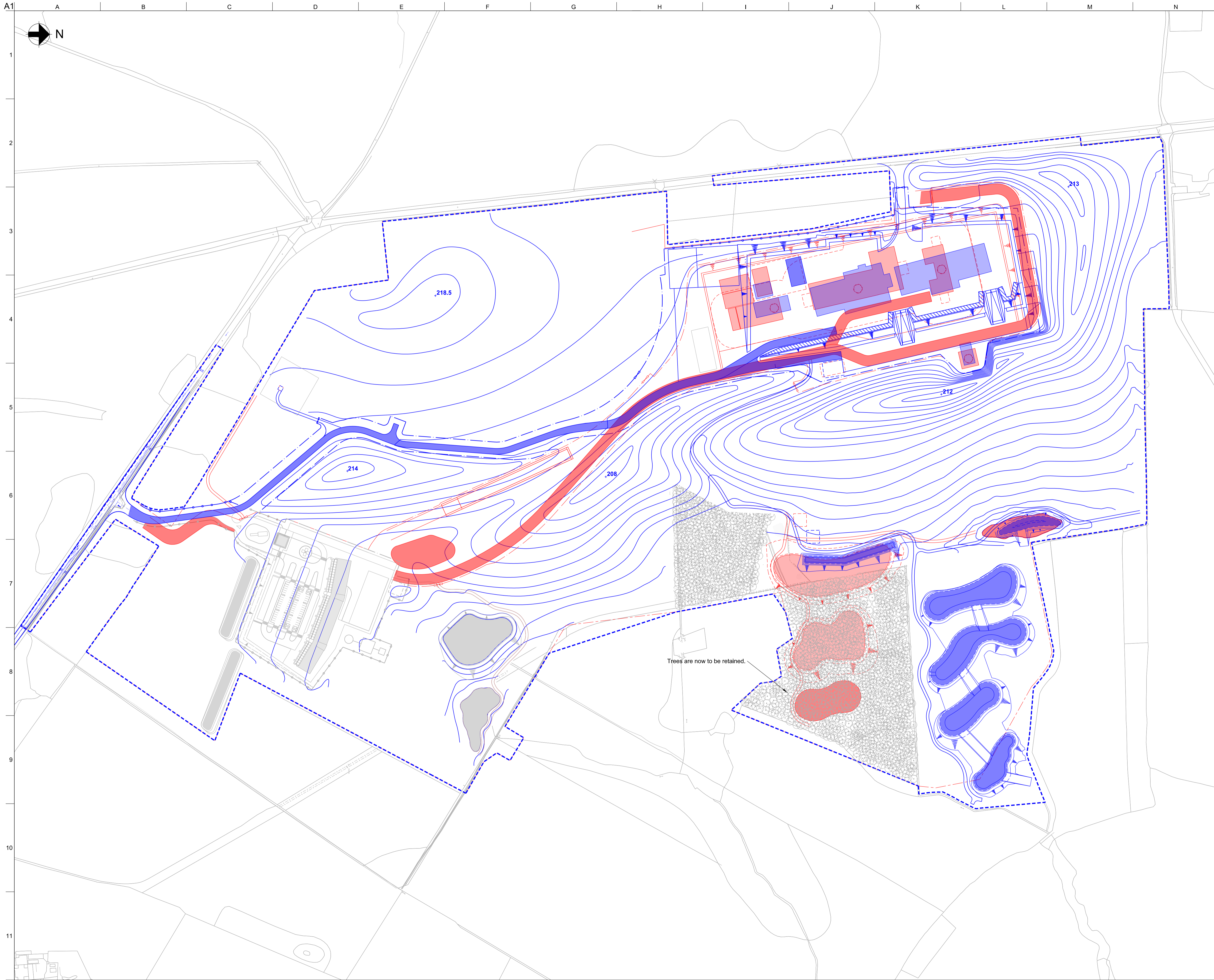
cartwright pickard architects
 Round Foundry Media Centre
 Foundry Street
 Leeds
 LS11 5GP
 tel 0113 394 4380
 e-mail mail@cartwrightpickard.com

Project: **653 York Potash**
 Drawing Title: **Doves Nest Farm Existing Site Plan**
 Scale: **1:1500 @ A0**
 Drwg. Created: **28 September 2012**

KEY:	— Extent of proposed surface development
Drwg. No:	653-AP-0002
Status:	Issue (Not for Construction)
Revision:	2



Appendix 3: Plan Identifying the Proposed Amendments to the Approved Development (Ref: YP-P2-CX-560 Rev 4)



Key:
— Section 73 Layout
— Approved layout

4	15/05/17	JB	CW	AH
Planning issue				
3	12/05/17	JB	CW	CW
Planning issue				
2	05/05/17	JB	CW	AH
Planning issue				
1	24/02/17	KK	CW	AG
Planning issue				
0	24/02/17	KK	CW	AG
Planning issue				
Issue	Date	By	Chkd	Appd

ARUP
 Admiral House, Rose Wharf,
 75 East Street, Leeds, LS9 8EE
 Tel +44(0)113 242 8498 Fax +44(0)113 242 8573
 www.arup.com

Client
Sirius Minerals Plc

Job Title
York Potash

**Minehead Site
 General Arrangement
 Comparison of Layouts**

Scale at A1 1:2000

Discipline Highways

Job No 253285 Drawing Status Issue

Drawing No YP-P2-CX-560 Issue 4

C:\global\arup\leeds\jobs\2500025285\0117\2_Arup - P10 Platform Redesign\20 CAD P10 - Platform Redesign\YP-P2-CX-560.dwg
 © Arup

Bristol
0117 403 1980
bristol@lichfields.uk

Cardiff
029 2043 5880
cardiff@lichfields.uk

Edinburgh
0131 285 0670
edinburgh@lichfields.uk

Leeds
0113 397 1397
leeds@lichfields.uk

London
020 7837 4477
london@lichfields.uk

Manchester
0161 837 6130
manchester@lichfields.uk

Newcastle
0191 261 5685
newcastle@lichfields.uk

Thames Valley
0118 334 1920
thamesvalley@lichfields.uk