

Appendix 4: Updated Plans Submitted as part of s73 Application

Schedule of Approved Plans to Identify those being replaced as part of the s73 Application
 [Copies of all replacement plans provided as part of this Appendix and immediately after this Schedule]

Approved Plans		Status as part of s73 Application	Revised Plan/Dwg Number	Comments (where applicable)	Copy provided in SES (July 2017)
Plan Name	Plan/Dwg Number				
Mine and MTS Planning Boundary	Y5154-0102M-CJD1 rev 2	Unchanged			No
Site Location Plan	YP-P2-CX-550 rev 1	Unchanged			Appendix 2
Woodsmith Mine Site (was Doves Nest Farm Site)					
Existing Site Plan	653-AP-0002 rev 2	Unchanged			No
Existing Utilities and Borehole Locations	YP-P2-CX-510 rev 0	Unchanged			No
Proposed Site Plan and Block Plan	653-AP-0005 rev 1	Replaced	653-AP-0005 rev 4		Appendix 4
Proposed Welfare Buildings Site Plan	653-AP-0006 rev 1	Replaced	653-AP-0006 rev 3		Appendix 4
Proposed Mine Buildings Site Plan	653-AP-0007 rev 1	Replaced	653-AP-0007 rev 11		Appendix 4
Proposed Hard Landscaping Plan	653-AP-0060 rev 1	Replaced	653-AP-0060 rev 4		Appendix 4
Gatehouse – Proposed Plans, Sections and Elevations - Colour	653-AP-0032 rev 0	Replaced	653-AP-0032 rev 1		Appendix 4
Miner's Welfare Facility - Proposed Floor and Roof Plans - Colour	653-AP-0033 rev 0	Unchanged			No
Miner's Welfare Facility - Proposed Sections & Elevations - Colour	653-AP-0034 rev 0	Unchanged			No
Miner's Welfare Facility - Elevation Study - Sheet 01	653-AP-0035 rev 0	Unchanged			No
Miner's Welfare Facility - Elevation Study - Sheet 02	653-AP-0036 rev 0	Unchanged			No
Mine Building 04 – Back-up Generator Plan, Section and Elevations - Colour	653-AP-0051 rev 3	Replaced	653-AP-0051 rev 5		Appendix 4
Mine Building 05 – Intake Ventilation Shaft Plan, Section and Elevations - Colour	653-AP-0052 rev 3	Replaced	653-AP-0052 rev 5		Appendix 4
Mine Building 06 – Substation Plan, Section and Elevations - Colour	653-AP-0053 rev 3	Replaced	653-AP-0053 rev 5		Appendix 4

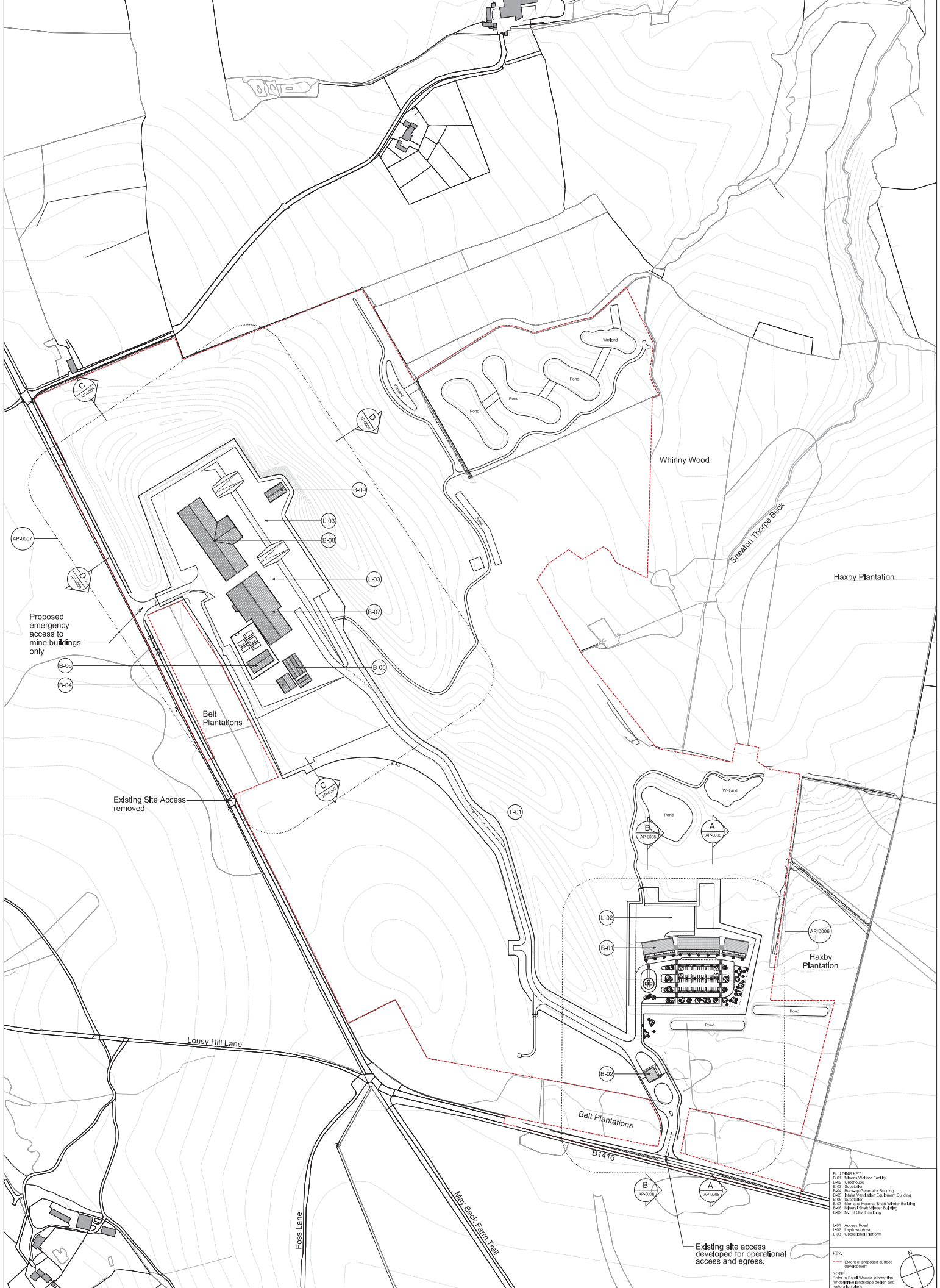
Approved Plans		Status as part of s73 Application	Revised Plan/Dwg Number	Comments (where applicable)	Copy provided in SES (July 2017)
Plan Name	Plan/Dwg Number				
Mine Building 07 – Men and Material Shaft Winder Plan, Section and Elevations - Colour	653-AP-0054 rev 3	Replaced	653-AP-0054 rev 5		Appendix 4
Mine Building 08 – Mineral Shaft Winder Plan, Section and Elevations - Colour	653-AP-0055 rev 3	Replaced	653-AP-0055 rev 6		Appendix 4
Mine Building 09 – MTS Shaft Building Plan, Section and Elevations - Colour	653-AP-0056 rev 4	Replaced	653-AP-0056 rev 6		Appendix 4
Mine Building - Elevation Study - Colour	653-AP-0058 rev 3	Replaced	653-AP-0058 rev 4		Appendix 4
Existing Site Sections Sheet 01	653-AP-0003 rev 0	Unchanged			No
Existing Site Sections Sheet 02	653-AP-0004 rev 0	Unchanged			No
Proposed Site Sections Sheet 01	653-AP-0008 rev 1	Replaced	653-AP-0008 rev 3		Appendix 4
Proposed Site Sections Sheet 02	653-AP-0009 rev 3	Replaced	653-AP-0009 rev 14		Appendix 4
MTS Scheme Construction Masterplan	YP-P2-CX-030 rev 11	Replaced	n/a	Replaced with Illustrative Annual Progress Plans (see below)	n/a
MTS Scheme Operation Masterplan	YP-P2-CX-031 rev 12	Replaced	YP-P2-CX-031 rev 12B		Appendix 4
MTS Scheme Earthworks Strategy Earthworks Bunds and Ponds	YP-P2-CX-032 rev 7	Replaced	YP-P2-CX-032 rev 8B	Plan now provided for illustrative purposes only	Appendix 4
MTS Scheme Earthworks Strategy Construction Platforms	YP-P2-CX-033 rev 7	Replaced	YP-P2-CX-033 rev 7B		Appendix 4
Pyritic Mudstone Facilities and Temporary NHNI Waste Storage Facility	YP-P2-CX-036 rev 3	Replaced	YP-P2-CX-036 rev 4B	Plan now provided for illustrative purposes only	Appendix 4
Hours of Working	YP-P2-CX-080 rev 1	Replaced	YP-P2-CX-080 rev 1B		Appendix 4
Surface Water Drainage, General Arrangement	YP-P2-CD-080 rev 9	Replaced		Plans removed to avoid repetition with detail provided on plan ref: YP-P2-CX-509 rev 2B (see below).	n/a
Earthworks Strategy Groundwater Drainage Design	YP-P2-CD-200 rev 6	Replaced			n/a
Phasing Strategy -	YP-P2-CX-500	Replaced	Replaced with	Replacement plans provided for	Appendix 4

Approved Plans		Status as part of s73 Application	Revised Plan/Dwg Number	Comments (where applicable)	Copy provided in SES (July 2017)
Plan Name	Plan/Dwg Number				
Phase 1, Months 1-6.5	rev 2		five illustrative plans:-	illustrative purposes only showing annual progress at in Spring 2018, Spring 2019, Spring 2020, Spring 2021 and Final Landforms. Detail otherwise being agreed and determined via submission pursuant to planning condition on the York Potash planning permission.	
Phasing Strategy - Phase 2, Months 6.5-16	YP-P2-CX-501 rev 2	Replaced	40-ARI-WS-71-CI-DR-1030 Rev 1		
Phasing Strategy - Phase 3, Months 17-25	YP-P2-CX-502 rev 1	Replaced	40-ARI-WS-71-CI-DR-1031 Rev 1		
Phasing Strategy - Phase 4, Months 26-32	YP-P2-CX-503 rev 1	Replaced	40-ARI-WS-71-CI-DR-1032 Rev 0		
Phasing Strategy - Phase 5, Months 33-40	YP-P2-CX-504 rev 2	Replaced	40-ARI-WS-71-CI-DR-1033 Rev 1		
Phasing Strategy - Phase 6, Month 41-51	YP-P2-CX-505 rev 1	Replaced	40-ARI-WS-71-CI-DR-1034 Rev 0		
Phasing Strategy - Phase 7, Removal of all non-hazardous non inert material off site	YP-P2-CX-506 rev 1	Replaced			
Minehead Site Working Plan - General Arrangement and Earthworks	YP-P2-CX-508 rev 3	Replaced	YP-P2-CX-508 rev 9B		Appendix 4
Minehead Site Working Plan - Surface Water Drainage	YP-P2-CX-509 rev 1	Replaced	YP-P2-CX-509 rev 2B		Appendix 4
Minehead Site Working Plan - Lighting	YP-P2-CX-511 rev 1	Replaced	YP-P2-CX-511 rev 1A		Appendix 4
Proposed Minehead - Existing Landscape Features	2309.MH01 rev 02	Replaced	2309.MH01 rev 04		Appendix 4
Proposed Minehead - Removal of Existing Landscape Features	2309.MH02 rev 02	Replaced	2309.MH02 rev 04		Appendix 4
Proposed Minehead - Restoration Proposals	2309.MH03 rev 05	Replaced	2309.MH03 rev 07		Appendix 4
Proposed Minehead - Restoration Proposals – Cross Sections	2309.MH04 rev 04	Replaced	2309.MH04 rev 06		Appendix 4
Proposed Minehead - Restoration Proposals – Cross Sections	2309.MH05 rev 04	Replaced	2309.MH05 rev 06		Appendix 4
Proposed Minehead - Restoration Proposals – Cross Sections	2309.MH06 rev 04	Replaced	2309.MH06 rev 06		Appendix 4
Proposed Minehead – External Lighting Strategy Plans	YP-P2-EL-201-208	Removed		Further details of the construction phase lighting strategy is provided in Chapter 6 (LVIA) of this SES and associated appendices. Details	n/a

Approved Plans		Status as part of s73 Application	Revised Plan/Dwg Number	Comments (where applicable)	Copy provided in SES (July 2017)
Plan Name	Plan/Dwg Number				
				are being agreed pursuant to condition 94 of the York Potash planning permission.	
Tree protection measures for works in highways at A171/B1416 right turn	2556.473.AIA. Whitby.YPL	Unchanged			No
From ES Appendix 3.3 Minehead Site Welfare Entrance General Arrangement	YP-P2-CX-043 Issue 0	Unchanged			No
From ES Appendix 3.3 Minehead Site Access Junction	YP-P2-CX-042 Issue 0	Removed		Plan no longer necessary as right hand turn access removed as part of earlier s96A application	n/a
Proposed Mine and MTS Sub-Surface Structures	1000-ENV-DFS-DWG-005 Rev 2	Replaced	1000-ENV-DFS-DWG-005 Rev 4		Appendix 4
Lady Cross Plantation Site					
Existing Site Plan	653-LC-AP-0201 rev 2	Unchanged			No
Existing Site Sections	653-LC-AP-0202 rev 0	Unchanged			No
Proposed Site Plan	653-LC-AP-0203 rev 2	Unchanged			No
Proposed Compound Site Plan and Block Plan	653-LC-AP-0204 rev 2	Unchanged			No
Proposed Site Sections	653-LC-AP-0205 rev 0	Unchanged			No
MTS Building Proposed Plan, Section, Elevation	653-LC-AP-0207 rev 0	Unchanged			No
Proposed Hard Landscaping Plan	653-LC-AP-0208 rev 3	Unchanged			No
Proposed Site Earthworks – Ladycross Plantation, Spoil Phasing	YP-P2-CX-443 rev 7	Unchanged			No
Drainage working plan	YP-P2-CX-528 rev 2	Unchanged			No
Proposed Phasing Strategy: Phases 1 - 5	YP-P2-CX-542 rev 2	Unchanged			No
Proposed Phasing Strategy: Phase 6	YP-P2-CX-543 rev 2	Unchanged			No
Working Plan: General Arrangement and Earthworks	YP-P2-CX-525 rev 2	Unchanged			No
Ladycross Plantation	YP-P2-CX-445	Unchanged			No

Approved Plans		Status as part of s73 Application	Revised Plan/Dwg Number	Comments (where applicable)	Copy provided in SES (July 2017)
Plan Name	Plan/Dwg Number				
				are being agreed pursuant to condition 94 of the York Potash planning permission.	
Tree protection measures for works in highways at A171/B1416 right turn	2556.473.AIA. Whitby.YPL	Unchanged			No
From ES Appendix 3.3 Minehead Site Welfare Entrance General Arrangement	YP-P2-CX-043 Issue 0	Unchanged			No
From ES Appendix 3.3 Minehead Site Access Junction	YP-P2-CX-042 Issue 0	Removed		Plan no longer necessary as right hand turn access removed as part of earlier s96A application	n/a
Proposed Mine and MTS Sub-Surface Structures	1000-ENV-DFS-DWG-005 Rev 2	Replaced	1000-ENV-DFS-DWG-005 Rev 4		Appendix 4
Lady Cross Plantation Site					
Existing Site Plan	653-LC-AP-0201 rev 2	Unchanged			No
Existing Site Sections	653-LC-AP-0202 rev 0	Unchanged			No
Proposed Site Plan	653-LC-AP-0203 rev 2	Unchanged			No
Proposed Compound Site Plan and Block Plan	653-LC-AP-0204 rev 2	Unchanged			No
Proposed Site Sections	653-LC-AP-0205 rev 0	Unchanged			No
MTS Building Proposed Plan, Section, Elevation	653-LC-AP-0207 rev 0	Unchanged			No
Proposed Hard Landscaping Plan	653-LC-AP-0208 rev 3	Unchanged			No
Proposed Site Earthworks – Ladycross Plantation, Spoil Phasing	YP-P2-CX-443 rev 7	Unchanged			No
Drainage working plan	YP-P2-CX-528 rev 2	Unchanged			No
Proposed Phasing Strategy: Phases 1 - 5	YP-P2-CX-542 rev 2	Unchanged			No
Proposed Phasing Strategy: Phase 6	YP-P2-CX-543 rev 2	Unchanged			No
Working Plan: General Arrangement and Earthworks	YP-P2-CX-525 rev 2	Unchanged			No
Ladycross Plantation	YP-P2-CX-445	Unchanged			No

Approved Plans		Status as part of s73 Application	Revised Plan/Dwg Number	Comments (where applicable)	Copy provided in SES (July 2017)
Plan Name	Plan/Dwg Number				
Drainage - Construction	rev 7				
Ladycross Plantation Drainage - Operation	YP-P2-CX-446 rev 7	Unchanged			No
Ladycross Plantation – Proposed Earthworks	YP-P2-CX-447 rev 6	Unchanged			No
Lady Cross Plantation Site Plan – Existing Utilities and Borehole Locations	YP-P2-CX-532 rev 0	Unchanged			No
Working Plan: Lighting	YP-P2-EL-503 rev 2	Unchanged			No
Ladycross Plantation - Existing Landscape Features	2322.LCP01 rev 3	Unchanged			No
Ladycross Plantation - Removal of Existing Vegetation	2322.LCP02 rev 5	Unchanged			No
Restoration Proposals	2322.LCP03 rev 4	Unchanged			No
Restoration Proposals – Cross Sections	2322.LCP04 rev 1	Unchanged			No
Ladycross Plantation – Construction Masterplan	YP-P2-CX-440 rev 8	Unchanged			No
Ladycross Plantation – Operational Masterplan	YP-P2-CX-441 rev 8	Unchanged			No
Ladycross Plantation - Alternative access junction	YP-P2-SK-030 rev 0	Unchanged			No



- BUILDING KEY:**
 B-01 Mine's Welfare Facility
 B-02 Washhouse
 B-03 Substation
 B-04 Backhoe Operator Building
 B-05 Scale Verification Equipment Building
 B-06 Substation
 B-07 Material Handling Shed with Air Building
 B-08 Material Shed
 B-09 M.T.S. Shed Building
- KEY:**
 - - - Extent of proposed surface development
- NOTE:**
 Refer to East Warden Information for further landscape design and restoration plans.
- KEY:**
 L-01 Access Road
 L-02 Laydown Area
 L-03 Operational Platform

Notes:
 Unless indicated, this drawing is for information only. Do not scale from this drawing for purposes other than planning and/or for Woodrigh Mine Section 23 applications. June 2017.
 All dimensions to be checked on site.
 Drawn by: [Signature]

Revisions:

Rev	Date	By	Check	Notes
1	2017.06.27	PL	PL	Final design
2	2017.06.27	PL	PL	Updated to incorporate with NPPC Schedule of Changes for the SEI submission.
3	2017.06.27	PL	PL	Updated to incorporate with Section 23 applications - M.T.S. shed location.
4	2017.06.27	PL	PL	Updated for Section 23 Application June 2017 in accordance with Planning Review dated 26.05.17.
5	2017.06.27	PL	PL	Updated for Section 23 Application June 2017 in accordance with comments dated 27.05.17.

Revisions:

Rev	Date	By	Check	Notes
1	2017.06.27	PL	PL	Final design
2	2017.06.27	PL	PL	Updated to incorporate with NPPC Schedule of Changes for the SEI submission.
3	2017.06.27	PL	PL	Updated to incorporate with Section 23 applications - M.T.S. shed location.
4	2017.06.27	PL	PL	Updated for Section 23 Application June 2017 in accordance with Planning Review dated 26.05.17.
5	2017.06.27	PL	PL	Updated for Section 23 Application June 2017 in accordance with comments dated 27.05.17.

Revisions:

Rev	Date	By	Check	Notes
1	2017.06.27	PL	PL	Final design
2	2017.06.27	PL	PL	Updated to incorporate with NPPC Schedule of Changes for the SEI submission.
3	2017.06.27	PL	PL	Updated to incorporate with Section 23 applications - M.T.S. shed location.
4	2017.06.27	PL	PL	Updated for Section 23 Application June 2017 in accordance with Planning Review dated 26.05.17.
5	2017.06.27	PL	PL	Updated for Section 23 Application June 2017 in accordance with comments dated 27.05.17.

Revisions:

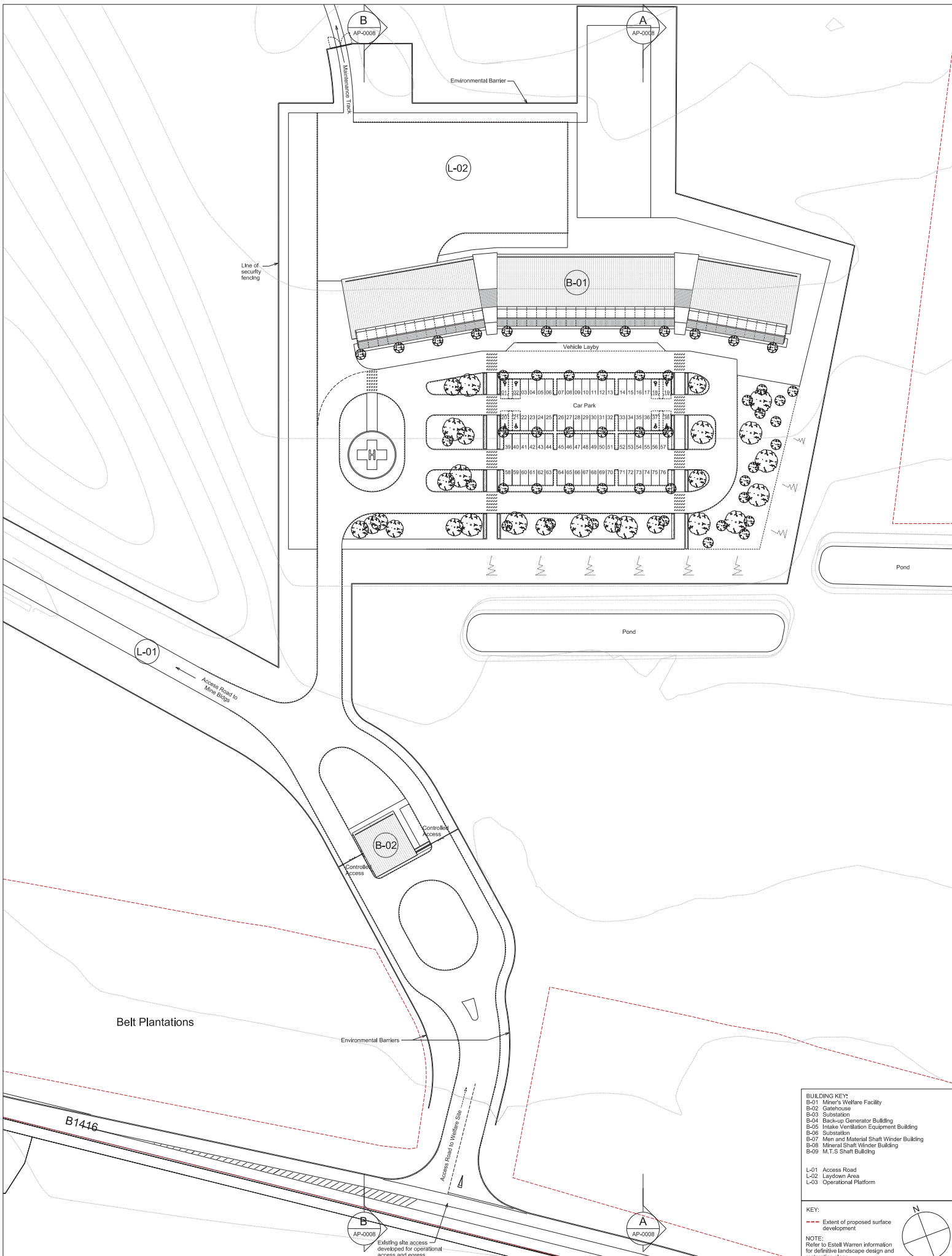
Rev	Date	By	Check	Notes
1	2017.06.27	PL	PL	Final design
2	2017.06.27	PL	PL	Updated to incorporate with NPPC Schedule of Changes for the SEI submission.
3	2017.06.27	PL	PL	Updated to incorporate with Section 23 applications - M.T.S. shed location.
4	2017.06.27	PL	PL	Updated for Section 23 Application June 2017 in accordance with Planning Review dated 26.05.17.
5	2017.06.27	PL	PL	Updated for Section 23 Application June 2017 in accordance with comments dated 27.05.17.

cartwright pickard architects
 Round Foundry Mole Cote
 Priority Street
 Leeds
 LS2 1QZ
 Tel: 0113 394 4380
 Email: info@cartwrightpickard.com

Project: 653 York Potash
 Drawing Title: Woodrigh Mine Proposed Site and Block Plan
 Scale: 1:1500 @ A0
 Drawn: [Signature]
 Date: 28 September 2012

Drawn:	653-AP-0005
Status:	Issue (Not for Construction)
Revision:	4





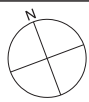
BUILDING KEY:

- B-01 Miner's Welfare Facility
- B-02 Galehouse
- B-03 Substation
- B-04 Backup Generator Building
- B-05 Intake Ventilation Equipment Building
- B-06 Substation
- B-07 Men and Material Shaft Winder Building
- B-08 Mineral Shaft Winder Building
- B-09 M.T.S Shaft Building

L-01 Access Road
L-02 Laydown Area
L-03 Operational Platform

KEY:
 --- Extent of proposed surface development

NOTE:
 Refer to Estell Warren information for definitive landscape design and restoration plans.



Notes:
 Unless indicated, this drawing is for information only. Do not scale from this drawing for purposes other than planning application ref: Woodsmith Mine Section 73 Application June 2017.
 All dimensions to be checked on site

0 25m
 Drwg. original size: A1

Copyright Cartwright Pickard Architects Ltd.

Revisions:		Check:
Date:	Rec:	Note:
25.09.14	0	PC
10.02.15	1	IWA
26.06.17	2	IWA
29.06.17	3	JS

cartwright pickard architects
 Round Foundry Media Centre
 Foundry Street
 Leeds
 LS11 5QP

Tel 0113 394 4380
 e-mail mail@cartwrightpickard.com

Project: 653
York Potash

Drawing Title: Proposed Welfare Buildings Site Plan

Scale: 1:500 @ A1
Drwg. Created: 03 October 2012

Drwg. No:	653-AP-0006
Status:	Issue (Not for Construction)
Revision:	3