

KEY

- Extent of works
- Existing contours
- Proposed contours (at 2m intervals, unless otherwise indicated)
- Existing broadleaved woodland / scrub
- Existing coniferous plantation
- Existing hedgerow
- Existing watercourse
- Proposed woodland planting
- Proposed open scrub and grassland
- Proposed species rich grassland
- SuDS retention ponds & wildlife ponds
- Surface water drainage features (pipes/land drains/swales)
- SuDS maintenance track

Whinny Wood

Sneaton Thorpe Beck

Haxby Plantation

Haxby Plantation

Revision 07: 28/06/2017 Amendments to text.
 Revision 06: 13/06/2017 Updated to latest scheme.
 Revision 05: 03/02/2015 General amendments.
 Revision 04: 22/01/2015 General amendments.
 Revision 03: 01/06/2014 Updated to architect layout.
 Revision 02: 26/06/2014 Site boundary & existing contours updated, & graphic amendments.
 Revision 01: 27/06/2014 Minor amendments.

Estell Warren
 Planning & Environmental
 1001 1st Street
 Suite 101
 York, YO1 1EP
 Tel: 01904 616161
 Fax: 01904 616162
 Email: info@estellwarren.co.uk

SIRIUS
 Environmental
 1001 1st Street
 Suite 101
 York, YO1 1EP
 Tel: 01904 616161
 Fax: 01904 616162
 Email: info@siriusenv.co.uk

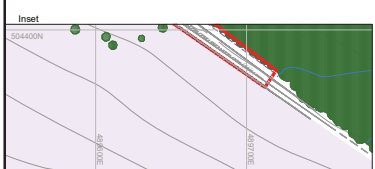
Project:
Woodsmith Mine

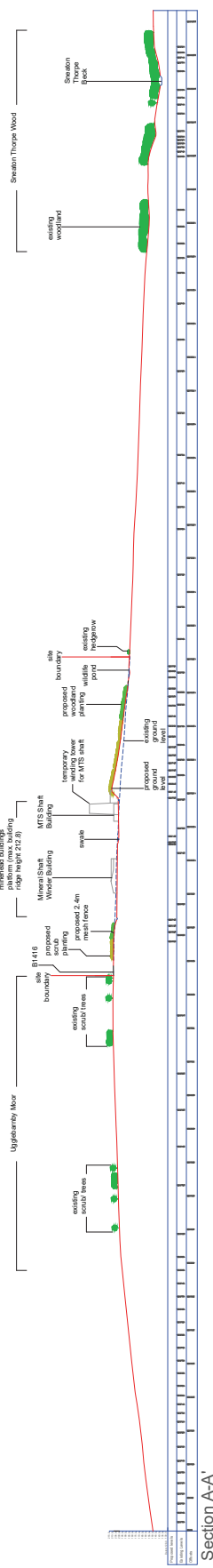
Drawing Title:
Restoration Proposals

Drawing Number: 2309 MH03
 Revision: 07

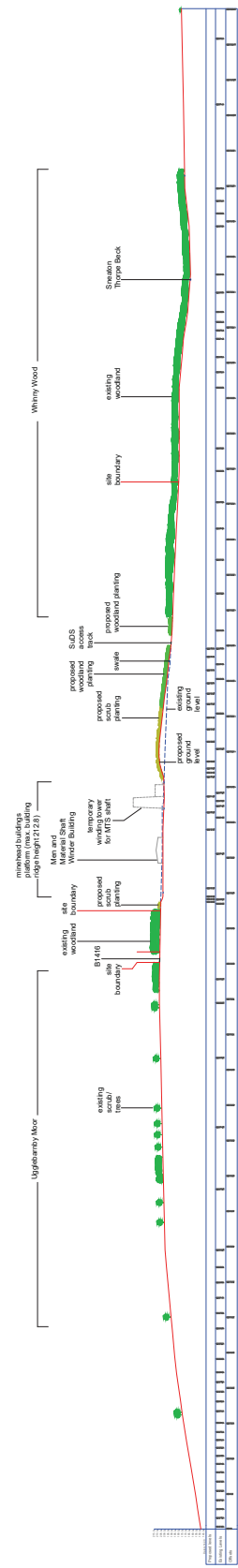
Scale: 1:1250 @ A0
 Date: June 2017

Drawn: ME
 Checked: SW

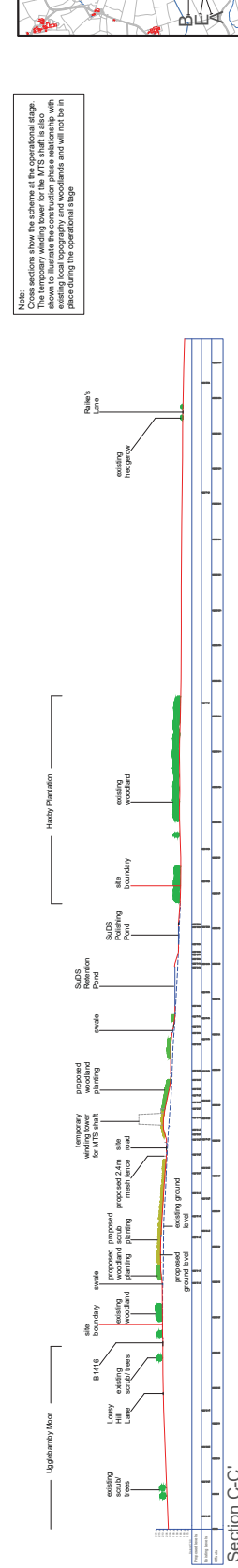




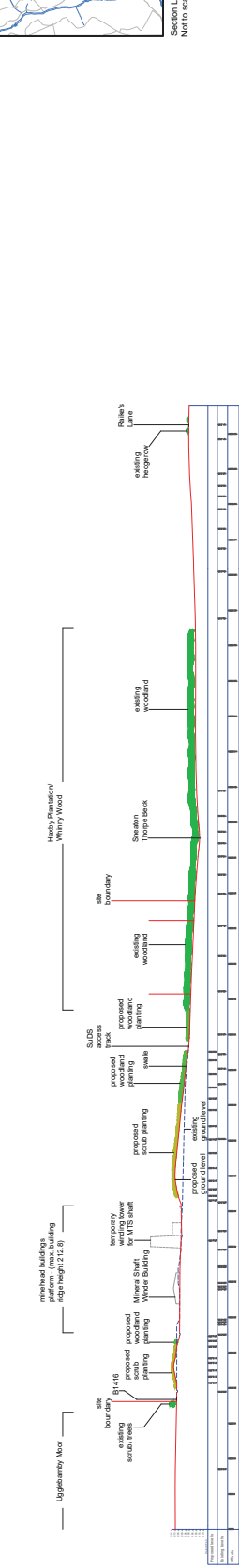
Section A-A'



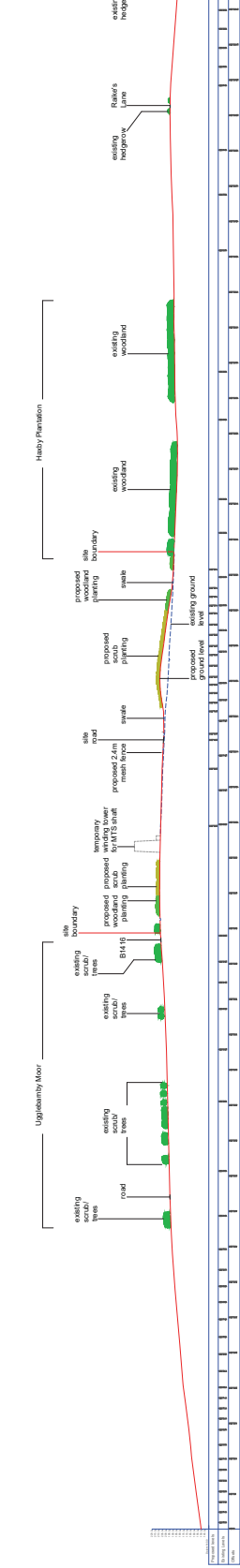
Section B-B'



Section C-C'

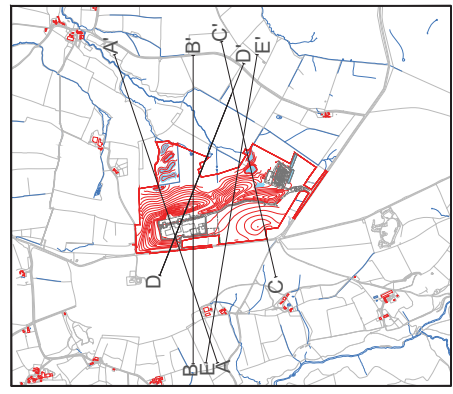


Section D-D'



Section E-E'

Note: sections show the substrate at the operational edge. The temporary working tower for the MIS shaft is also shown to illustrate the construction phase relationship with the existing ground levels and will not be in place during the operational stage.



Section Locations. Not to scale.

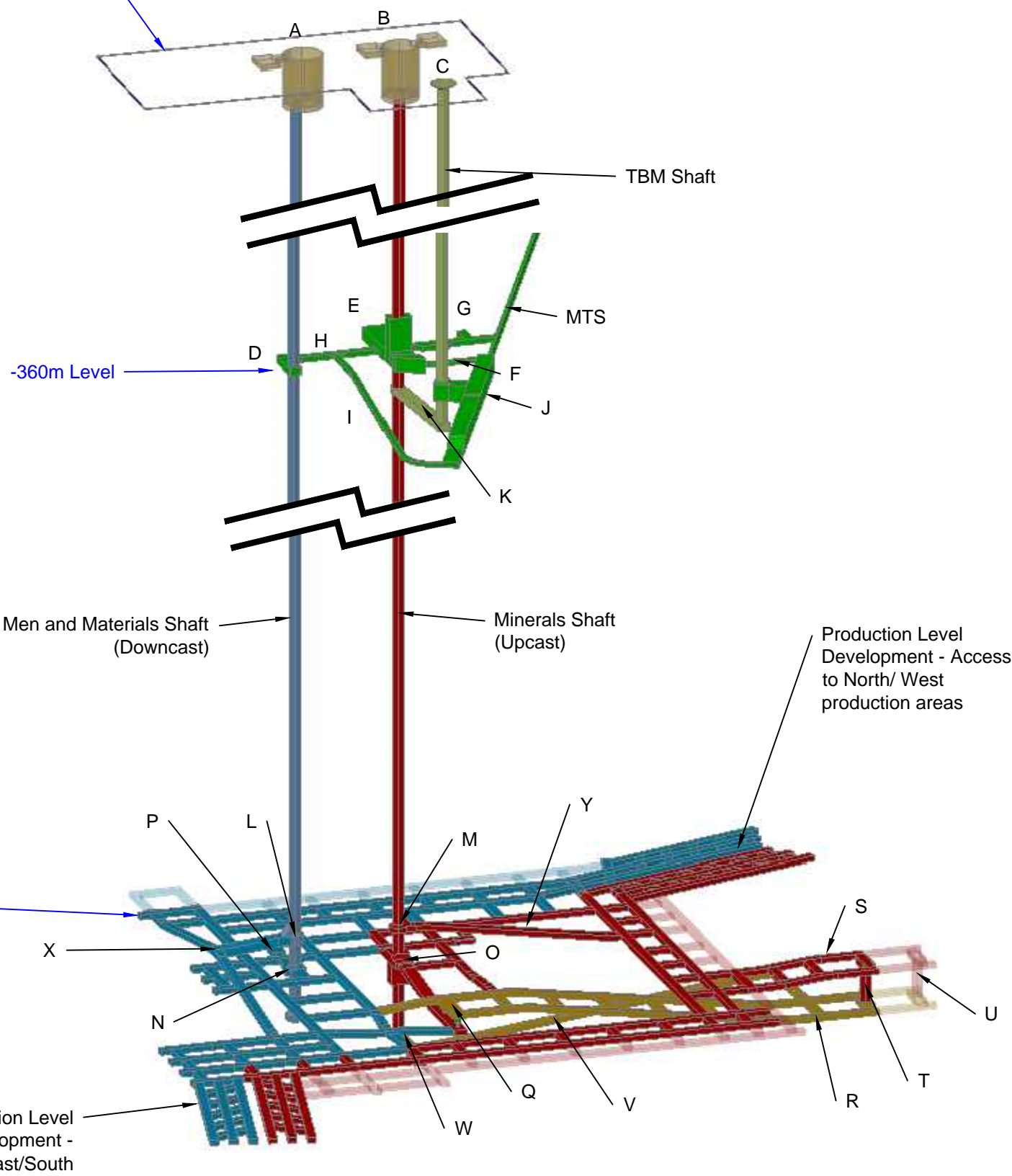
Revision 06: 26/05/2017. Amendment 6
 Revision 05: 20/05/2015. Amendment 5 to scheme
 Revision 04: 20/05/2014. Amendment 4 to scheme
 Revision 03: 26/05/2014. Updated the boundary
 Revision 02: 27/05/2014. Amendment 2 to scheme

Estell Warren
 CONSULTANTS
 100, 102, 104, 106, 108, 110, 112, 114, 116, 118, 120, 122, 124, 126, 128, 130, 132, 134, 136, 138, 140, 142, 144, 146, 148, 150, 152, 154, 156, 158, 160, 162, 164, 166, 168, 170, 172, 174, 176, 178, 180, 182, 184, 186, 188, 190, 192, 194, 196, 198, 200, 202, 204, 206, 208, 210, 212, 214, 216, 218, 220, 222, 224, 226, 228, 230, 232, 234, 236, 238, 240, 242, 244, 246, 248, 250, 252, 254, 256, 258, 260, 262, 264, 266, 268, 270, 272, 274, 276, 278, 280, 282, 284, 286, 288, 290, 292, 294, 296, 298, 300, 302, 304, 306, 308, 310, 312, 314, 316, 318, 320, 322, 324, 326, 328, 330, 332, 334, 336, 338, 340, 342, 344, 346, 348, 350, 352, 354, 356, 358, 360, 362, 364, 366, 368, 370, 372, 374, 376, 378, 380, 382, 384, 386, 388, 390, 392, 394, 396, 398, 400, 402, 404, 406, 408, 410, 412, 414, 416, 418, 420, 422, 424, 426, 428, 430, 432, 434, 436, 438, 440, 442, 444, 446, 448, 450, 452, 454, 456, 458, 460, 462, 464, 466, 468, 470, 472, 474, 476, 478, 480, 482, 484, 486, 488, 490, 492, 494, 496, 498, 500, 502, 504, 506, 508, 510, 512, 514, 516, 518, 520, 522, 524, 526, 528, 530, 532, 534, 536, 538, 540, 542, 544, 546, 548, 550, 552, 554, 556, 558, 560, 562, 564, 566, 568, 570, 572, 574, 576, 578, 580, 582, 584, 586, 588, 590, 592, 594, 596, 598, 600, 602, 604, 606, 608, 610, 612, 614, 616, 618, 620, 622, 624, 626, 628, 630, 632, 634, 636, 638, 640, 642, 644, 646, 648, 650, 652, 654, 656, 658, 660, 662, 664, 666, 668, 670, 672, 674, 676, 678, 680, 682, 684, 686, 688, 690, 692, 694, 696, 698, 700, 702, 704, 706, 708, 710, 712, 714, 716, 718, 720, 722, 724, 726, 728, 730, 732, 734, 736, 738, 740, 742, 744, 746, 748, 750, 752, 754, 756, 758, 760, 762, 764, 766, 768, 770, 772, 774, 776, 778, 780, 782, 784, 786, 788, 790, 792, 794, 796, 798, 800, 802, 804, 806, 808, 810, 812, 814, 816, 818, 820, 822, 824, 826, 828, 830, 832, 834, 836, 838, 840, 842, 844, 846, 848, 850, 852, 854, 856, 858, 860, 862, 864, 866, 868, 870, 872, 874, 876, 878, 880, 882, 884, 886, 888, 890, 892, 894, 896, 898, 900, 902, 904, 906, 908, 910, 912, 914, 916, 918, 920, 922, 924, 926, 928, 930, 932, 934, 936, 938, 940, 942, 944, 946, 948, 950, 952, 954, 956, 958, 960, 962, 964, 966, 968, 970, 972, 974, 976, 978, 980, 982, 984, 986, 988, 990, 992, 994, 996, 998, 1000

SIRIUS
 CONSULTANTS
 100, 102, 104, 106, 108, 110, 112, 114, 116, 118, 120, 122, 124, 126, 128, 130, 132, 134, 136, 138, 140, 142, 144, 146, 148, 150, 152, 154, 156, 158, 160, 162, 164, 166, 168, 170, 172, 174, 176, 178, 180, 182, 184, 186, 188, 190, 192, 194, 196, 198, 200, 202, 204, 206, 208, 210, 212, 214, 216, 218, 220, 222, 224, 226, 228, 230, 232, 234, 236, 238, 240, 242, 244, 246, 248, 250, 252, 254, 256, 258, 260, 262, 264, 266, 268, 270, 272, 274, 276, 278, 280, 282, 284, 286, 288, 290, 292, 294, 296, 298, 300, 302, 304, 306, 308, 310, 312, 314, 316, 318, 320, 322, 324, 326, 328, 330, 332, 334, 336, 338, 340, 342, 344, 346, 348, 350, 352, 354, 356, 358, 360, 362, 364, 366, 368, 370, 372, 374, 376, 378, 380, 382, 384, 386, 388, 390, 392, 394, 396, 398, 400, 402, 404, 406, 408, 410, 412, 414, 416, 418, 420, 422, 424, 426, 428, 430, 432, 434, 436, 438, 440, 442, 444, 446, 448, 450, 452, 454, 456, 458, 460, 462, 464, 466, 468, 470, 472, 474, 476, 478, 480, 482, 484, 486, 488, 490, 492, 494, 496, 498, 500, 502, 504, 506, 508, 510, 512, 514, 516, 518, 520, 522, 524, 526, 528, 530, 532, 534, 536, 538, 540, 542, 544, 546, 548, 550, 552, 554, 556, 558, 560, 562, 564, 566, 568, 570, 572, 574, 576, 578, 580, 582, 584, 586, 588, 590, 592, 594, 596, 598, 600, 602, 604, 606, 608, 610, 612, 614, 616, 618, 620, 622, 624, 626, 628, 630, 632, 634, 636, 638, 640, 642, 644, 646, 648, 650, 652, 654, 656, 658, 660, 662, 664, 666, 668, 670, 672, 674, 676, 678, 680, 682, 684, 686, 688, 690, 692, 694, 696, 698, 700, 702, 704, 706, 708, 710, 712, 714, 716, 718, 720, 722, 724, 726, 728, 730, 732, 734, 736, 738, 740, 742, 744, 746, 748, 750, 752, 754, 756, 758, 760, 762, 764, 766, 768, 770, 772, 774, 776, 778, 780, 782, 784, 786, 788, 790, 792, 794, 796, 798, 800, 802, 804, 806, 808, 810, 812, 814, 816, 818, 820, 822, 824, 826, 828, 830, 832, 834, 836, 838, 840, 842, 844, 846, 848, 850, 852, 854, 856, 858, 860, 862, 864, 866, 868, 870, 872, 874, 876, 878, 880, 882, 884, 886, 888, 890, 892, 894, 896, 898, 900, 902, 904, 906, 908, 910, 912, 914, 916, 918, 920, 922, 924, 926, 928, 930, 932, 934, 936, 938, 940, 942, 944, 946, 948, 950, 952, 954, 956, 958, 960, 962, 964, 966, 968, 970, 972, 974, 976, 978, 980, 982, 984, 986, 988, 990, 992, 994, 996, 998, 1000

Project: Woodminth Mine
 Drawing Title: Restoration Proposals - Cross Sections
 Sheet 1 of 3
 Drawing No: 2303.M104
 Scale: 1:2500 @ A0
 Date: February 2014
 Author: ME
 Checker: BW

Split Level Platform
Elevations: 204.1m and 200.7m AOD

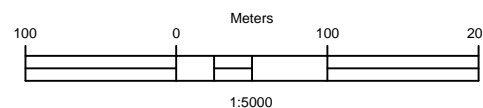


Feature Identification	
ID	Description
A	Men and materials shaft winder and headframe chamber
B	Minerals shaft winders and headframe chamber
C	TBM shaft evasee
D	Men and materials shaft inset (-360m Level)
E	Minerals shaft inset and rope changing chamber (-360m Level)
F	Conveyor link from minerals shaft to MTS
G	Men/Machine access from MTS to minerals shaft
H	Men/Machine access from minerals shaft to men and materials shaft
I	Men/Machine access from men and materials shaft to end of bunker
J	-360 TBM Launch Chamber (future run of mine ore bunkering)
K	Upcast air tunnel between minerals shaft and TBM shaft (-390m Level)
L	Men and materials shaft ventilation inset
M	Minerals shaft ventilation shaft inset
N	Men and materials shaft production level inset
O	Minerals shaft production level inset
P	Machine build up bay
Q	Surge Bins
R	Bunker bottom drift development
S	Bunker top development
T	Run of Mine Bunker
U	Potential second run of mine bunker for future development
V	Minerals shaft sump drift
W	Minerals shaft sump
X	Intake ventilation drift connecting the men and materials shaft vent inset to the production level
Y	Exhaust ventilation drift connecting the minerals shaft vent inset to the production level

Pit bottom workings key:

- Potential future development
- Intake airway development
- Return airway development
- Potential future development
- Surge/Bunker bottom/Sump drift development
- Potential bunker bottom extension

Drawing Number	Title	No.	Status	Description	Date	Dr.	Ch.	AE	EM
		4		Labels amended	30/06/2017	MW			
		3		Near surface structures updated	07/06/2017	MW			
		2		Workings amended to latest thinking at each level	11/12/2014	MW			
		1		Revised as per NLP requirements (scale bar added)					
		0		Issued for external review					
Reference Documents		Revisions							



Drawn By:	Date:
Check By:	Date:
Area Eng:	Date:
Eng Mgr:	Date:
Other Size:	Scale:

SIRIUS
MINERALS PLC

Sirius Minerals Plc | 7 - 10 Manor Court | Manor Gate | Scarborough | YO11 3TU | North Yorkshire
T +44 (0) 1752 850051 | W www.siriusminerals.co.uk

THIS DRAWING IS A PRIVATE AND CONFIDENTIAL COMMUNICATION AND THE PROPERTY OF YORK POTASH LIMITED AND MUST NOT BE COPIED OR LOANED WITHOUT THE PRIOR WRITTEN CONSENT OF SIRIUS MINERALS PLC

Drawing Location: X:\Project Studies\Design Office\3.0 Mine Doves Nest

Proposed mine and MTS subsurface structures	
Drawing Number: 1000-ENV-DFS-DWG-005	Revision: 4