

NOTES:

- Do not scale for purposes other than planning ref: Woodsmith Mine and MTS. These plans only show the illustrative progress of the above ground infrastructure works.

Key:

- Completed earthworks bund including surface water drainage provision
- Ongoing earthworks / temporary storage bund
- Laydown area / construction platform
- Construction Welfare facility and car parking
- Drip platform
- Dwell
- Access road / haul road
- Attenuation pond / wetland
- Surface water drainage
- Existing Yorkshire Water main
- Extent of proposed surface development
- 2.4m high black mesh construction fence
- 3m high acoustic fence

| Issue | Date     | By | Checked | Approved |
|-------|----------|----|---------|----------|
| 1     | 13/07/17 | JB | CW      | AH       |
|       |          |    | S73 B&M |          |

**ARUP**

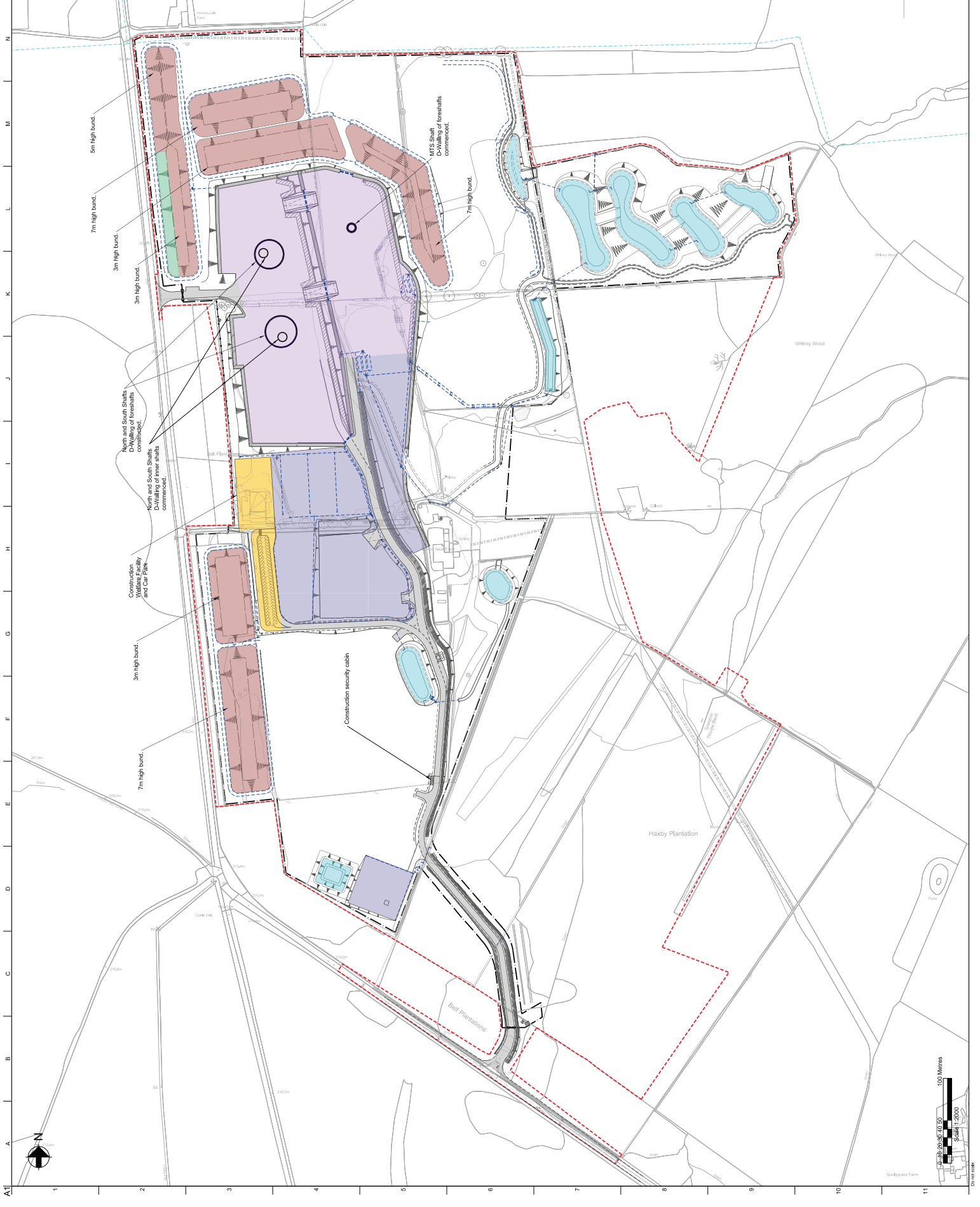
Arup  
 Arup House, Rose Wharf,  
 100 Boulevard,  
 The Landmark, 200888, Fax: +44(0)113 242 8973  
 www.arup.com

Client  
 Sirius Minerals Plc

Job Title  
 Woodsmith Mine  
 Minehead

Illustrative Annual  
 Progress Plans  
 Spring 2016

|              |                         |
|--------------|-------------------------|
| Scale: A1    | 1:2000                  |
| Drawn by     | Highways                |
| Checked by   | Construction            |
| Drawn No.    | 253285                  |
| Checked No.  | Issue                   |
| Contract No. | 40-ARI-WS-71-CI-DR-1030 |
| Revision     | 1                       |



NOTES:

- Do not scale for purposes other than planning ref: Woodsmith Mine and MTS. These plans only show the illustrative progress of the above ground infrastructure works.
- Completed earthworks bund including surface water drainage provision
- Ongoing earthworks / temporary storage bund
- Laydown area / construction platform
- Construction Welfare facility and car parking
- Dwell platform
- Dwell
- Access road / haul road
- Attenuation pond / wetland
- Surface water drainage
- Existing Yorkshire Water main
- Extent of proposed surface development
- 2.4m high black mesh construction fence
- 3m high acoustic fence

| Item    | Date     | By | CHKD | Revd |
|---------|----------|----|------|------|
| 1       | 13/07/17 | KK | CW   | AH   |
| S73 B&M |          |    |      |      |

**ARUP**  
 Arup  
 Arup House, Rose Wharf,  
 100 Boulevard,  
 The Landmark, 200 Bishopsgate,  
 London EC2M 4PU, UK  
 Tel: +44 (0)20 7466 8000 Fax: +44 (0)20 7466 8073  
 www.arup.com

Client: **Sirius Minerals Plc**

Job Title: **Woodsmith Mine Minehead**

Illustrative Annual Progress Plans Spring 2019

Scale: A1 1:2000  
 Drawn: Highways  
 Checked: [ ]  
 Contract No: **253285**  
 Contract Status: [ ]  
 Issue: **Issue**  
 Issue No: **40-ARI-WS-71-CI-DR-1031**  
 Issue Date: **1**

