

0 01/07/17 JB CW AH
S73 18400

- NOTES:**
- Do not scale for purposes other than planning ref: Woodsmith Mine and MTS. These plans only show the illustrative progress of the above ground infrastructure works.
- Key:**
- Completed earthworks bund including surface water drainage provision
 - Ongoing earthworks / temporary storage bund
 - Laydown area / construction platform
 - Construction Welfare facility and car parking
 - Shaft platform
 - Shaft position
 - Access road / haul road
 - Attenuation pond / wetland
 - Surface water drainage
 - Existing Yorkshire Water main
 - Extent of proposed surface development
 - 2.4m high black mesh construction fence
 - 3m high acoustic fence
 - Brillifery

ARUP

Architectural, Royal Warrant
15, The Quadrant, London W1 8UJ
Tel: +44 (0)20 7654 3200 Fax: +44 (0)20 7654 3202
www.arup.com

Client: **Sirius Minerals Plc**

Job Title: **Woodsmith Mine Minehead**

Scale: A1 1:2000

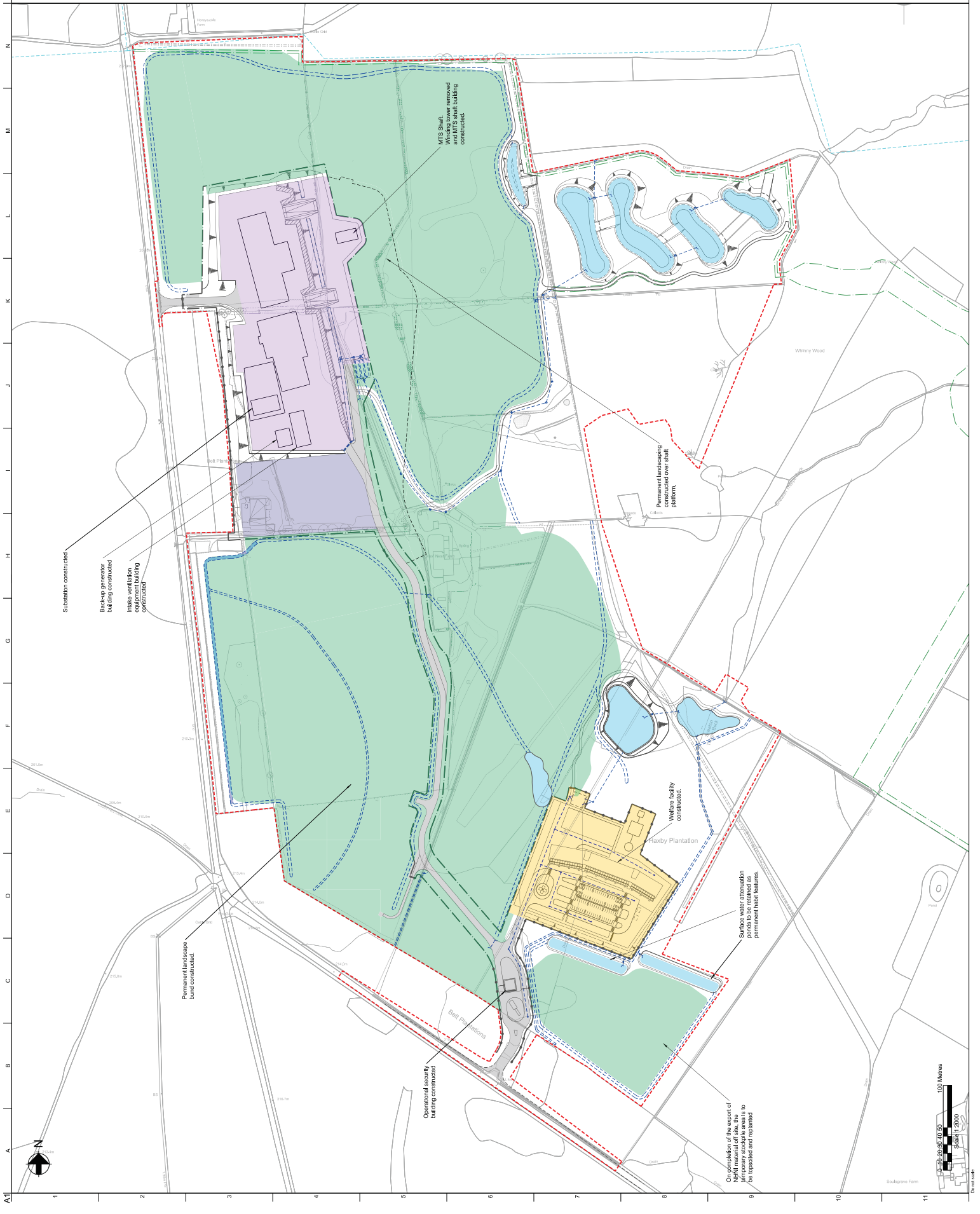
Date: Highways

Contract No: **253285**

Contract Status: **Issue**

Issue No: **40-ARI-WS-71-CI-DR-1034**

Issue: **0**



On completion of the export of NPNI material off site, the NPNI material to be retained as per updated and replaced.

Surface water attenuation ponds to be retained as permanent habitat features.

Welfare facility constructed.

Permanent landscaping constructed over shaft platform.

Operational security building constructed

Permanent landscape bund constructed.

Intake ventilation building constructed

Back-up generator building constructed

Substation constructed

MTS Shaft. Windmill tower removed and MTS shaft building constructed.

Flaxby Plantation

Whitby Wood

Sodgroye Farm

Ball Plantations

100 Metres
Scale 1:2000

0 10 20 30 40 50

North arrow

© 2017

Notes:
 1. Do not scale for purposes other than planning application of: Woodsmith Mine and MTS.
 2. For operational lighting refer to drawing YP-P2-CX-511.

- Key:
- - - - - Extent of proposed Surface Development
 - - - - - Topographical Survey
 - - - - - Site Earthworks Contours
 - - - - - Earthworks bund
 - - - - - Operational Building Layout
 - - - - - Surface Water Attenuation Pond / Wetland Area
 - - - - - Platform / laydown areas
 - - - - - Welfare Facility and Carpark
 - - - - - 2.4m High Black Mesh Fence
 - - - - - 3m High Environmental Barrier
 - - - - - Existing Watercourses
 - - - - - Existing High Voltage Overhead Cables
 - - - - - Surface water discharge attenuation pond
 - - - - - Surface water drainage wetland
 - - - - - Maximum bund height 214.5

| Issue | Date | By | Checked | Approved |
|----------|----------|----|---------|----------|
| 10 | 07/07/17 | KK | JB | CW |
| S73 B840 | | | | |

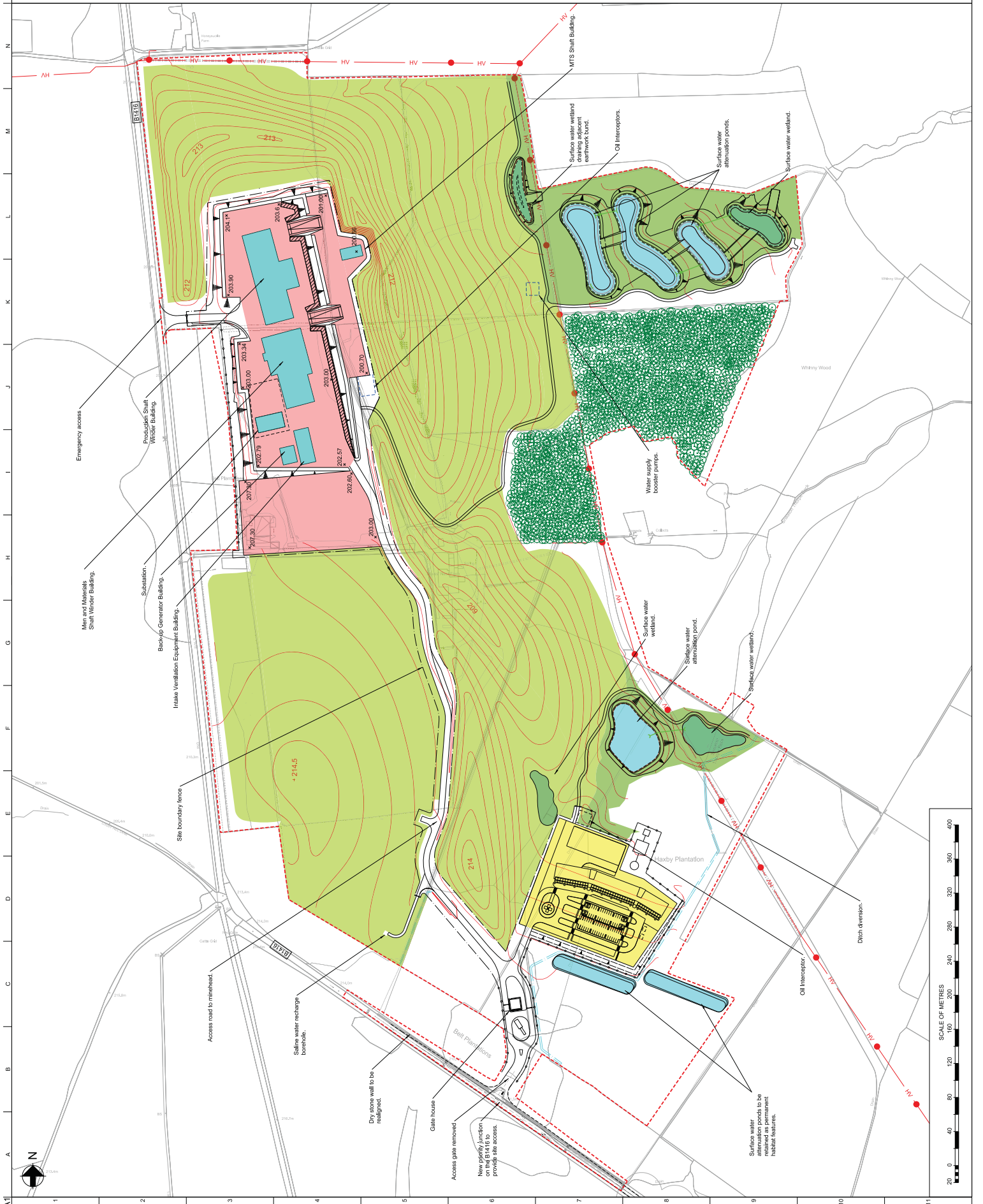
ARUP
 Australasia, Rose Street,
 Melbourne, Victoria, Australia
 Tel: +61 (0)3 2298 8888 Fax: +61 (0)3 2298 8923
 www.arup.com

Client:
Sirius Minerals Plc

Job Title:
**Woodsmith Mine
 Minehead**

Woodsmith Mine
 Woodsmith Mine
 General Arrangement
 and Earthworks

Scale: A1 1:2000
 Drawn By: Highways
 Issue No: 253285
 Contract No: YP-P2-CX-508
 Issue: 10



© 2017