

Ebberston Moor South Wellsite - Knapton Gas Pipeline  
Ebberston, North Yorkshire

# Statement of Community Involvement



August 2014

## Statement of Community Involvement

### Ebberston Moor South Well Site to Knapton Gas Pipeline, North Yorkshire

<b>Project Ref:</b>	23428/A5/P2/PF/SO	23428/A5/P2a/PF/SO	
<b>Status:</b>	Draft	Draft	
<b>Issue/Rev:</b>	1	2	
<b>Date:</b>	July 2014	August 2014	
<b>Prepared by:</b>	Paul Foster	Paul Foster	
<b>Checked by:</b>	Adrian James		

Barton Willmore  
St Andrews House  
St Andrews Road  
Cambridge  
CB4 1WB

Tel: 01223 345 555  
Fax: 01223 345 550

Ref: 23428/A5/P2a/PF/SO  
File Ref: 23428.P2a.SOCI.PF  
Date: August 2014

#### COPYRIGHT

The contents of this document must not be copied or reproduced in whole or in part without the written consent of Barton Willmore Planning LLP.

All Barton Willmore stationery is produced using recycled or FSC paper and vegetable oil based inks.

## **CONTENTS**

- 1.0 Introduction
- 2.0 Legislative Background
- 3.0 Pre-Application Stakeholder Consultation
- 4.0 Pre-Application Public Consultation
- 5.0 Summary and Conclusion

## **APPENDICES**

- Appendix 1: Invitations
- Appendix 2: Newspaper Advert
- Appendix 3: A-Board Sign
- Appendix 4: Information Brochure

## 1.0 INTRODUCTION

- 1.1 This Statement of Community (SCI) has been prepared by Barton Willmore LLP on behalf of Third Energy UK Limited and Moorland Energy Limited (hereby referred to as “the Applicant”) to accompany a planning application submitted to both the North York Moors National Park Authority (NYMNPA) and North Yorkshire County Council (NYCC) under the Town and Country Planning Act 1990 as amended by the Planning and Compulsory Purchase Act 2004. The application seeks full planning permission for the exploitation of conventional hydrocarbon resources only for the production of energy, including: gas production from the existing Ebberston Moor South Well Site; water production and re-injection; and construction of a 13.9 km long 12” diameter steel underground pipeline from Ebberston Moor South Well site to Knapton Generating Station (KGS) for the purpose of delivering natural gas and condensate from Ebberston Moor ‘A’ Well site to KGS where it will be used as a fuel-gas to generate power. These activities are collectively referred to hereafter as the “Proposed Development”.
- 1.2 Full details of the proposals are set out in the application documentation and accompanying Environmental Statement (ES). This SCI describes the level and nature of community engagement and participation undertaken to date in the preparation of the planning application.

## 2.0 LEGISLATIVE BACKGROUND

### National

- 2.1 On the 27 March 2012 the National Planning Policy Framework (NPPF) was published which, with the exception of PPS 10 'Planning for Sustainable Waste Management', replaces the majority of Planning Policy Statements. The NPPF states at paragraph 188 that:

**“early engagement has significant potential to improve the efficiency and effectiveness of the planning application system for all parties. Good quality pre-application discussion enables better coordination between public and private resources and improved outcomes for the community”.**

- 2.2 Section 4 of the Planning Practice Guidance (PPG), entitled “Before submitting an application”, published in March 2014, advises that pre-application engagement by prospective applicants offers significant potential to improve the efficiency and effectiveness of the planning application system. This can be achieved in a number of ways, including working collaboratively with interested parties at an early stage to identify, understand and seek to resolve issues associated with a proposed development. Statutory consultees have an important role to play at the pre-application stage. The PPG advises that statutory consultees need to take an early, pro-active approach and provide advice in a timely manner. Pre-application engagement with the community is encouraged where it adds value to the process and outcome.

### North York Moors National Park Authority

- 2.3 North York Moors National Park Authority (NYMNP) Statement of Community Involvement (SCI) was adopted in August 2006 with addendums added in September 2012 and March 2013. The SCI sets out NYMNP's plans for effective community consultation and how the community should be involved in the process of a planning application. It states at paragraphs 12.2-3:

**Pre-Application Discussions:**

**“For certain schemes which are likely to be contentious or have wider community impacts, the applicant will be expected to undertake more formal pre-application consultation with the local community and stakeholders and submit a supporting statement with any formal application setting out the issues relating to the development, the methods used to consult local people and how the issues raised have been addressed in the proposals. Applicants should hold discussions with the Authority to establish what method and scale of consultation would be appropriate. Such community consultation is expected for the following types of applications:**

- **Development requiring Environmental Impact Assessment which are accompanied by an Environmental Statement;**
- **Proposals which depart from the Development Plan; and**
- **Any development proposals which the Authority thinks will have significant implications for planning policy.**

**Where such consultation takes place it should be based on the following methods:**

- **Contact with the Parish Council(s);**
- **Public meeting/ display/ exhibition;**
- **Distribution of leaflets to residents; and**
- **Local press coverage”.**

2.4 In April 2014, the NYMNPA published a draft revised SCI for public consultation. Entitled “Involving People in Planning”, section 4 deals with development management. The document reiterates many of the messages in the current SCI. Pre-application discussions are encouraged to assess whether the principle of development is acceptable. For contentious schemes, more formal pre-application documents are

required as referred to above. In addition to the four methods of consultation above, 'use of social media' has been added.

### **North Yorkshire County Council**

2.5 North Yorkshire County Council (NYCC) Minerals and Waste Plan Statement of Community Involvement (SCI) was adopted in July 2006 and updated in 2013. The SCI sets out the plans of NYCC for effective community involvement in minerals and waste planning across the County. NYCC aims to encourage more people to get involved in the process so that decisions may be balanced and take into account the views of the whole community. It states:

**“Early community engagement can help identify new issues, help allay concerns, and allow for amendments to the proposals before formal submissions which can speed up the planning application process.**

**The Council will encourage prospective applications for major or sensitive development to carry out pre-submission publicity and consultation with the local community. While the methods to be used will be at the discretion of the applicant, the Council will encourage the use of such methods as public meetings, public exhibitions and presentations, presentations to Parish Councils, leaflet drops and publicity in local media. Applicants are encouraged to take into account any feedback received when finalising their proposals”.**

2.6 The Applicant undertook public engagement in line with the recommendations outlined above, the detail of which is described in the following section. In summary, invitations were distributed to publicise the date, time and venue of the public exhibition. A private viewing was scheduled for key stakeholders prior to the event opening to the public. All those who attended were able to discuss the proposals with representatives of the Applicant and their advisers and completed feedback forms.

### 3.0 PRE-APPLICATION STAKEHOLDER CONSULTATION

- 3.1 Third Energy UK Energy is a subsidiary of Third Energy Holdings Limited, an energy company with a comprehensive approach to the development and production of its existing portfolio of gas reserves in the UK. Third Energy Holdings Limited has several wholly owned subsidiaries, Third Energy Limited, and UK Energy Systems. Moorland Energy is the licence holder of PEDL 120 in which Ebberston Moor South Well Site falls. Third Energy is the owner of the Knapton Generating Station (KGS) in North Yorkshire.
- 3.2 The Proposed Development is part of a phased approach to the development of Ebberston Moor gas field. This planning application seeks permission for “Natural gas production from the existing Ebberston Moor South Wellsite, the drilling of a borehole for water production and re-injection, the construction of a 13.9km 12” diameter underground pipeline from the Ebberston Moor South Wellsite to the Knapton Generating Station at East Malton, Knapton and the construction of ancillary works at the Generating Station.”
- 3.3 The Proposed Development falls within Schedules 2d and 2e of the Town and Country Planning (Environmental Impact Assessment) Regulations 2011 as it involves deep drilling and surface industrial installation for the extraction of natural gas where the area of the development exceeds 0.5 ha. Consequently, it has the potential to have environmental effects and is considered to be Environmental Impact Assessment (EIA) development. The Applicant has therefore prepared an Environmental Statement (ES) which accompanies the application and provides a detailed description of the project and its environmental impacts.
- 3.4 A key element of the pre-application stakeholder consultation was meeting and engaging with the landowners and tenants on whose land the pipeline is proposed to cross. Bell Ingram and John Margesson were appointed as land agents, on behalf of the Applicant, to identify a potential pipeline route which avoided sensitive landscape, ecological and archaeological areas on land whose owners and tenants were willing in principle to allow access for surveys to determine a route for the gas pipeline to be constructed in return for compensation. An initial route was identified by the Applicant on the advice of the appointed land agents in April 2014 and, following agreement by the Applicant, access agreements were secured from each of the agents representing the various landowners and tenants.



3.5 As part of the pre-application consultation process, key meetings were held with the Director of Planning and the Head of Development Management at the NYMNP, the Head of Planning at NYCC and the Head of Planning at Ryedale DC in May 2014. Discussions were also held with the Environment Agency about ground water protection areas close to the Well Site. These discussions assisted the Applicant in addressing relevant policies in the supporting planning documentation. Alongside the pre-application discussions with the mineral planning authorities and the EA, arrangements were made for a public consultation exercise involving the local community within the vicinity of the Proposed Development. Chapter 4 summarises how the Applicant has engaged with the local community and residents of the area in order to fully explain what is being proposed and to seek their views.

## 4.0 PRE-APPLICATION PUBLIC CONSULTATION

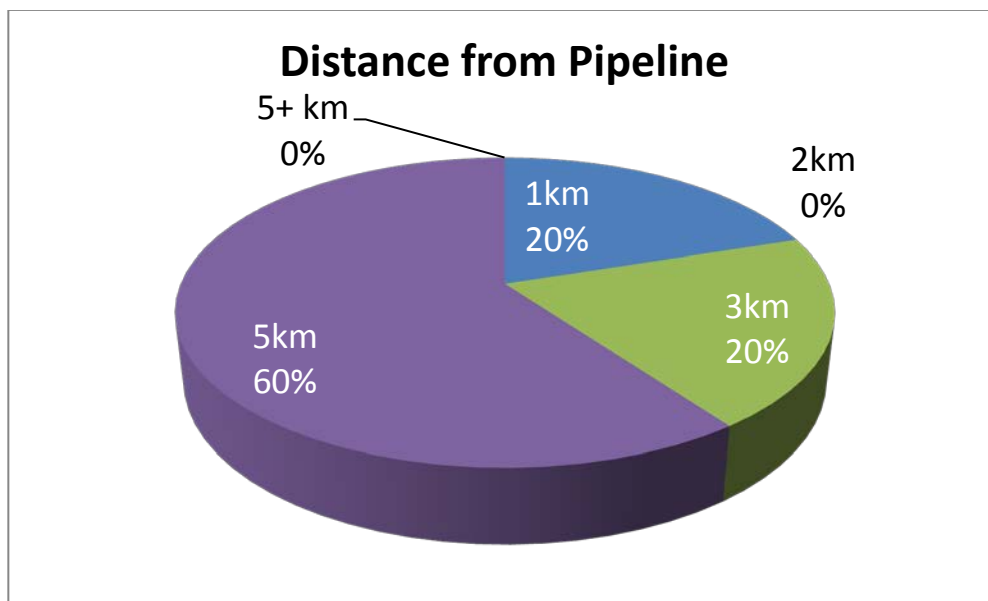
- 4.1 The Applicant undertook a programme of pre-application public consultation in order to inform the local community about the Proposed Development and provide an opportunity for those affected by the proposal to express their concerns and engage directly with company officials.
- 4.2 A public exhibition event took place to provide information to the public about the project. The exhibition events were promoted locally through the distribution of invitations (**see Appendix 1**) to some 4060 residents within a 5km radius of the pipeline route. The Applicant also promoted the public exhibition events locally by placing a prominent advert in three newspapers – the Scarborough News, the Malton and Pickering Mercury and the Malton Gazette and Herald (**Appendix 2**). Signs were erected on lamp posts in villages within 5km of the pipeline to promote the public exhibition events, and A-board signs (**Appendix 3**) were placed in prominent positions in the villages where the exhibitions were taking place.
- 4.3 The Applicant also publicised the exhibition events by contacting key local stakeholders via email or 'phone call which included the local MP, local ward councillors, neighbouring ward councillors, National Park Authority Planning Officers, portfolio holders, the local parish council and all neighbouring parish councils.
- 4.4 The public exhibition events were held at Allerston Village Hall on Wednesday 2 July 2014 opening at 1.00pm with a private viewing for key stakeholders and opening at 2.00pm to the general public. An information brochure was produced (**see Appendix 4**), to accompany the exhibition events. The brochure containing all the information from the exhibition panels was made available for everyone to take away.
- 4.5 In order to make the exhibition event accessible to the local community, Allerston village hall was chosen as it is one of the nearest public halls to the pipeline route, subject to availability, and is also within close walking distance of a public transport route.
- 4.6 The Applicant provided a number of different forms of information at the exhibition events which included:
- **Exhibition Display** - A display comprising 12 panels outlining the background to the company, details of the Proposed Development and what residents could expect to see during construction and operation of the proposed scheme;

- **A summary booklet** - containing all the information from the exhibition panels which residents could take away them;
- **Maps of the area** - indicating the proposed site and access routes; and
- **Third Energy and Moorland Energy staff and their advisers** –staff were available to answer any questions and expand on information displayed on the panels.

4.7 A total of 70 people registered their attendance at the event in Allerston. Owing to the high footfall at the Allerston event, it was not possible to capture all the attendees' names and, therefore, the actual attendance at Allerston may have been slightly higher. The events were attended by representatives of local parish councils and Ryedale District Council.

4.8 Those attending the exhibition events were asked to place dots on the chart to give an indication of how far they lived from the Proposed Development site. A map with distance circles at 1 mile intervals was provided to assist attendees in locating where they lived in relation to the proposed pipeline. **Figure 1** below illustrates the results which show that the majority of the attendees at the exhibition events (50%) live between 3 and 5 km from the proposed route of the pipeline. Figure 1 also shows that 20% of the attendees lived within 1 km of the route and 20% within 2 and 3 km. There were no attendees that lived more than 5 km from the route.

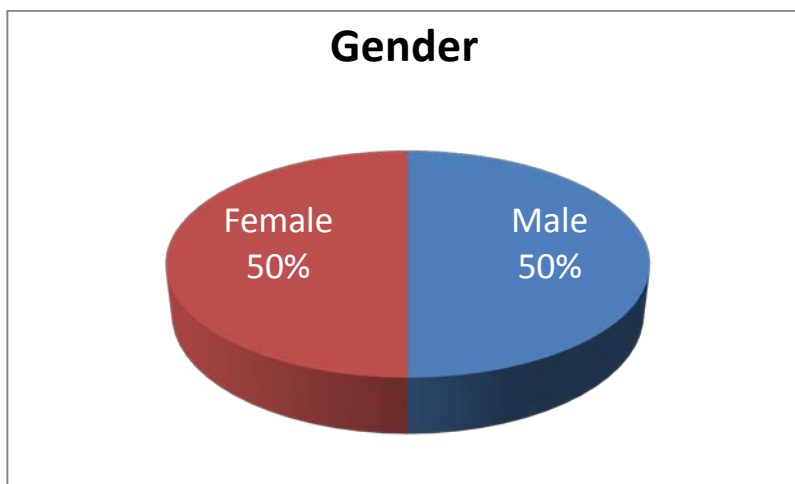
**Figure 1 – Distance from the Pipeline**



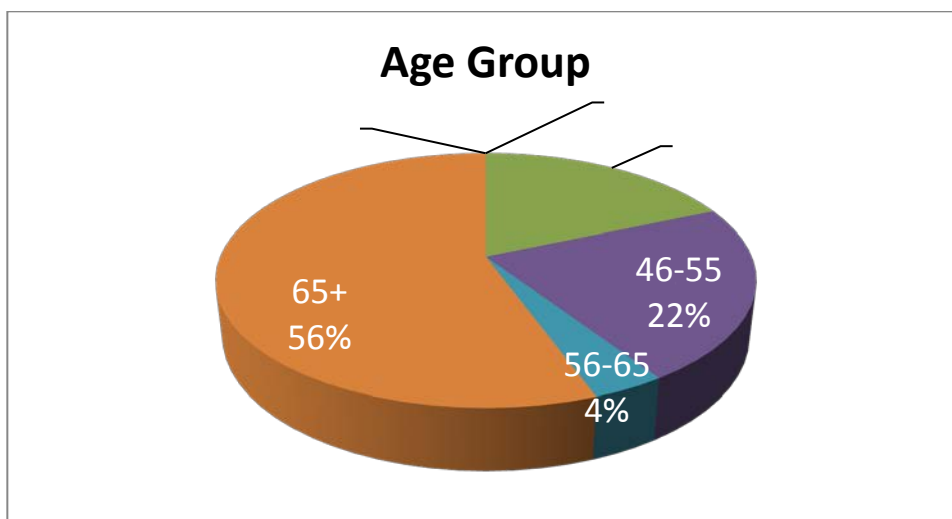
4.9 Attendees were also asked to give an indication of the age category they fitted into in order to understand the demographics of those attending the exhibition. Male visitors were given a blue dot and female visitors a red dot. Sticky dots were used in order to make the process of data collection anonymous and fully accessible to those who attended.

4.10 **Figures 2 and 3** show the results of the information collected about the local community at the exhibition events. **Figure 2** illustrates the gender of the exhibition attendees which shows that the attendees were split equally. **Figure 3** illustrates the age of the attendees which shows that the majority of the attendees (56%) were aged 65+, followed by 46-55 year olds (22%) and 36-45 year olds (18%). **Figure 3** also shows that very few under 26's attended the event (5%), despite the fact that the Allerston event remained open until after 6.30pm in the evening. This may reflect the age profile of residents within the villages.

**Figure 2 – Gender**



**Figure 3 – Age**



- 4.11 During the exhibition event feedback was obtained from the attendees on their views of the exhibition and the proposal itself. Feedback obtained from the residents was largely positive in that they found the exhibition helpful. The main concerns centred around water injection well, the effects on tourism and traffic during construction of the pipeline.
- 4.12 Specific issues raised were:
- Any potential for the water injection well to create problems for the aquifer as the villages in the area are all well fed
  - Effect on tourism if construction is undertaken during summer months
  - Traffic on Ebberston Common Lane
  - Potential problems caused by a shortage of passing places along the road
  - Increased traffic on the A170
  - Any potential impacts on wildlife during construction
  - Opportunities to supply products and services to the project
  - More input for the parish council into the scheme
- 4.13 Due to the busy nature of the event, it was not possible to get every visitor to log their details so the attendance stats below represent a random sample of visitors.
- 4.14 Most visitors, however, were positive about the proposals and welcomed the abandonment of the Ryedale Gas Project (RGP). Members of the opposition groups formed to fight the RGP said they would be writing to their local planning authorities confirming their support for the scheme and a number of residents asked about employment and supply chain opportunities on the project.
- 4.15 In accordance with the key principles outlined in the North Yorkshire County Council and the North York Moors National Park Authority Statements of Community Involvement, the proposal has taken into account the relevant comments in order to finalise the planning application.
- 4.16 In addition, the Applicant has provided an email address ([info@third-energy.com](mailto:info@third-energy.com)) for the members of the public affected by the Proposed Development to request any further information or to express an opinion.

## 5.0 SUMMARY AND CONCLUSION

5.1 This Statement of Community Involvement summarises the background and programme which has been undertaken by the Applicant in connection with the Proposed Development. A comprehensive range of activities has been carried out including:

- Liaison meetings with NYMNP, North Yorkshire County Council, and Ryedale DC;
- One public exhibition event;
- Media advertising in the local newspapers; and
- Pre-application consultation draft documentation.

5.2 The objectives of the consultation event was to inform local stakeholders of the proposals and seek their views on the scheme. The event was aimed at giving local people a better understanding of what Third Energy and Moorland Energy and proposing, and what people can expect to see.

5.3 The consultation event took place at a location as close as possible to the pipeline route given availability of venues.

5.4 The event allowed attendees to browse the information panels, technical documents and maps, ask questions of the team, as well as take away information to browse at their leisure. In total, 70 people registered their attendance at the event although staff believe the actual attendance was slightly higher than recorded due to some people not registering their details during busy periods.

5.5 Feedback from the event was largely positive. The vast majority of people attending were supportive of the scheme and attended out of curiosity, to see how close the pipeline would be to their houses or to confirm that the Thornton le Dale project was not now proceeding. Very few people expressed any real concerns, although the issues that were raised more frequently were the implication of the water injection well, potential effects on tourism during the summer months and any potential increase in traffic, although no-one said they objected to the scheme in principle.

5.6 In summary, the overall public view was very positive. Residents viewed the removal of the need for the Thornton le Dale processing plant as the main benefit of the new proposals, although supply chain opportunities, preservation of jobs and energy security were also mentioned.

- 5.7 The Applicant has undertaken consultation in which discussions have helped formed the planning application. Once the final application is submitted the Applicant has a statutory to publicise the details of the project and the planning application documentation which will be available for public inspection and comment. The Applicant will also be responding to matters raised by the statutory agencies, the non-statutory bodies, and the public on the details of the Proposed Development planning application as may be necessary.
- 5.8 In addition to the public consultation that has been undertaken to date, it is anticipated that there will be some continued public interest in the progress of the application.

# **APPENDIX 1**

## **Invitation**



# ADVANCE NOTICE PUBLIC INFORMATION DAY



## Third Energy UK Gas Ltd has plans to connect the Eberston Moor South Gas Field to the Knapton Generating Station.

Last year Third Energy UK Gas Ltd consulted local residents on plans to develop the conventional Eberston Moor gas field and link it to the Knapton Generating Station via an underground pipeline. Planning permission was granted earlier this year. In 2012, Moorland Energy also received planning permission for their Eberston South development along with a pipeline to a new processing plant at Thornton le Dale.

The two companies have been in discussions and propose to jointly construct a single pipeline connecting the Eberston Moor field to the Knapton Generating Station. This means that the proposed Thornton le Dale processing plant will not now be needed. We believe the new proposals fully comply with local planning policies since they make use of existing infrastructure.

Consultation has taken place with all local authorities and residents are invited to come along to a public consultation event to inspect and comment on the plans, and ask questions of the specialists who will be on hand.

This will be held at:

**Allerston Village Hall**  
**Wednesday 2nd July 2014**  
**between 2pm and 6.30pm**

Management and technical specialists from Third Energy UK Gas Ltd will be on hand to explain what the work will involve and answer any questions you may have. Further information is available at:

[www.third-energy.com](http://www.third-energy.com)



# **APPENDIX 2**

## **Newspaper Advert**

# ADVANCE NOTICE PUBLIC INFORMATION DAY



## Third Energy UK Gas Ltd has plans to connect the Ebberston Moor South Gas Field to the Knapton Generating Station.

Last year Third Energy UK Gas Ltd consulted local residents on plans to develop the conventional Ebberston Moor gas field and link it to the Knapton Generating Station via an underground pipeline. Planning permission was granted earlier this year. In 2012, Moorland Energy also received planning permission for their Ebberston South development along with a pipeline to a new processing plant at Thornton le Dale.

The two companies have been in discussions and propose to jointly construct a single pipeline connecting the Ebberston Moor field to the Knapton Generating Station. This means that the proposed Thornton le Dale processing plant will not now be needed. We believe the new proposals fully comply with local planning policies since they make use of existing infrastructure.

Consultation has taken place with all local authorities and residents are invited to come along to a public consultation event to inspect and comment on the plans, and ask questions of the specialists who will be on hand.

This will be held at:

**Allerston Village Hall**  
**Wednesday 2nd July 2014**  
**between 2pm and 6.30pm**

Management and technical specialists from Third Energy UK Gas Ltd will be on hand to explain what the work will involve and answer any questions you may have. Further information is available at:

[www.third-energy.com](http://www.third-energy.com)



# **APPENDIX 3**

## **A-Board Sign**



**PUBLIC EXHIBITION**

**HERE TODAY 2PM-6.30PM**

# **APPENDIX 4**

## **Information Brochure**



# **THIRD ENERGY & MOORLAND CONSULTATION EVENT**



## WELCOME

Welcome to the Third Energy & Moorland consultation event.

This exhibition outlines our plans and proposals to install a pipeline to connect the existing Ebberston Moor South Well site to the existing Knapton Generating Station.

Last year Third Energy UK Gas Ltd consulted local residents on plans to develop the conventional Ebberston Moor gas field and link it to the Knapton Generating Station via an underground pipeline. Planning permission was granted earlier this year. In 2012, Moorland Energy also received planning permission for their Ebberston South development along with a pipeline to a new processing plant at Thornton le Dale.

## ABOUT THIRD ENERGY GAS LTD

Third Energy Gas Ltd, formally known as Viking UK Gas Ltd, will construct and operate the facility on behalf of the joint venture. It has been operating in North Yorkshire for some 20 years and has worked hard to ensure it does so with minimal impact on the local community. It has licence acreage in North Yorkshire, including producing fields.

Assets in North Yorkshire include licences and gas fields in the Vale of Pickering that have been producing gas for a long time. The gas is transferred through underground pipes to the Knapton Generating Station (KGS), which was opened on 22 May 1995.

The two companies have been in discussions and propose to jointly construct a single pipeline connecting the Ebberston Moor field to the Knapton Generating Station. This means that the proposed Thornton le Dale processing plant will not now be needed. We believe the new proposals fully comply with local planning policies since they make use of existing infrastructure.

The Pipeline will be designed, constructed and buried according to regulations and will have minimal environmental impact on the area. This exhibition is aimed at giving local people a better understanding of what we are doing, why we are doing it and what you can expect to see.

We hope that you find the exhibition informative, but if you have any questions, or comments please feel free to ask or speak with one of our team members.

KGS is located near East Knapton on a secluded site which is sheltered by trees on all sides.

The site passes largely unnoticed by the local community. Third Energy Gas Ltd has an excellent safety and environment record, having operated in the local area without any significant incidents for the last 20 years.

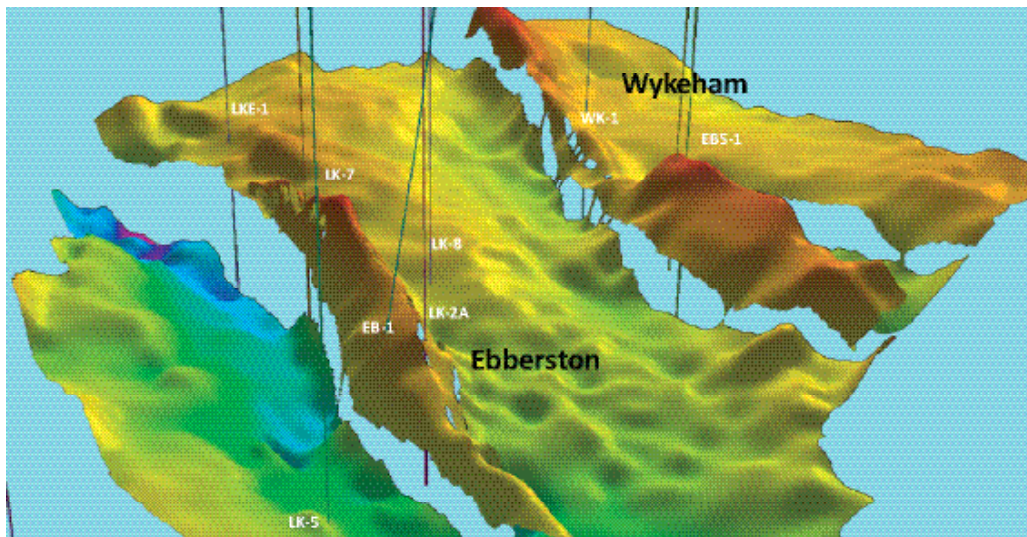
The existing pipelines network, which cannot be seen once construction has finished, has similarly been operating safely for that time.



## THE NEED FOR GAS

- Demand for gas in the UK is predicted to continue to rise to meet the greater demand from business and consumers as the economy recovers
- Natural gas is a far cleaner burning and more efficient fuel than coal or oil. Natural gas emits only two thirds as much nitrogen oxides as coal, 57 per cent of the carbon emissions of coal and 70 per cent of the emissions of oil.
- Currently more than two-thirds of the energy used to heat our homes and for cooking comes from gas distributed through the National Grid, and this is unlikely to change for the foreseeable future.
- Britain currently sources just half of its gas supplies from the North Sea and is becoming increasingly reliant on overseas supplies from places like Norway, the Middle East and Russia
- In 2004 the UK became a net importer of oil and gas for the first time. Since then demand has continued to rise with the UK currently importing around one third of its gas. It is anticipated that by 2020 this could increase to 70 per cent or more.
- Energy regulator Ofgem's recently-published Project Discovery report states that while supplies are thought to be secure for the next three years, it has concerns regarding supplies for 2015 onwards
- The report calls for action to deliver secure supplies and environmental objectives at affordable prices, warning that unprecedented levels of investment will need to be sustained over many years
- It is now more important than ever to extract reserves from new sites to ensure that a range of new energy supplies are brought online as soon as possible
- The cost of transporting gas long distances increases the gas price charged to consumers. The greater the quantities imported, the more impact this will have on increased gas prices.





## HISTORY OF GAS PRODUCTION IN THE AREA

This area of North Yorkshire has a long history of gas development and production, originally going back to the early 1970s. From the mid-1980s onwards, gas has been produced from the Ryedale Gas Fields. Many of the Ryedale Gas Fields were originally discovered by Taylor Woodrow Exploration Limited and subsequently developed by Kelt UK Limited. Kelt sold its interest in the Ryedale Gas Fields to Tullow Oil. Viking UK Gas Ltd acquired the interests of the Ryedale Gas Fields from Tullow Oil in 2003 and has subsequently undertaken an active drilling and workover programme to enhance gas production from the producing fields located at Kirby Misperton, Pickering, Marishes and Malton.

## THE EBERSTON MOOR GAS FIELD

The Eberston Moor gas field (originally called Lockton) was discovered in 1966 and produced gas between May 1971 and 1974. Since the 1970s further discoveries of gas have been made in the area.

In 2011 Viking UK Gas Limited was acquired by Third Energy. Since acquiring the company, Third Energy has continued to undertake work on the existing wellsites and evaluate the gas fields in the northern part of its licenced acreage, known as Eberston Moor.

Third Energy & Moorland are using the latest technology to unlock the potential of these gas fields, creating a boost to the local economy and helping to secure indigenous UK gas supplies.

The interpretation of 3D seismic data acquired over the fields in 2007 was re-interpreted in 2012 which has improved the understanding of the reservoirs' structure. In addition further sub-surface studies have improved the understanding of the reservoirs' behaviour.

## OUR PROPOSAL

### Background

In 2009, Moorland (formally known as Moorland Energy) acquired and drilled a well from Eberston South Site, south of Wykeham Forest and 4km north of the village of Eberston. The well was tested, proved to be successful and demonstrated that commercially attractive reserves of gas were sufficient to justify the development.

### Our proposal

The Proposed Development aims to carry out the following activities:

- Conventional gas production from the existing well at the Eberston Moor South Well Site; and
- Construction of one 12" diameter steel underground pipelines from the existing Eberston Moor South Well Site to deliver hydrocarbons to the KGS at East Knapton where the gas will be combusted to produce electricity
- Drill an additional water production/disposal well at Eberston South Well Site
- Install water separation and gas control equipment at Eberston Moor South Well Site

## PROPOSED ROUTE

The proposed length of the pipeline is 13.9km. The proposed pipeline route has been developed taking into account a number of different factors and constraints including:

- Environmental issues
- Archaeological sites
- Roads and waterways
- Public footpaths
- Land ownership

One underground 12" diameter pipeline will be constructed from Eberston Moor South Well Site to KGS to transport gas. The pipeline will be accompanied by a fibre optic cable within the construction working width. Normally, the construction working width will be 30m across although in some sensitive locations, this may need to be reduced.

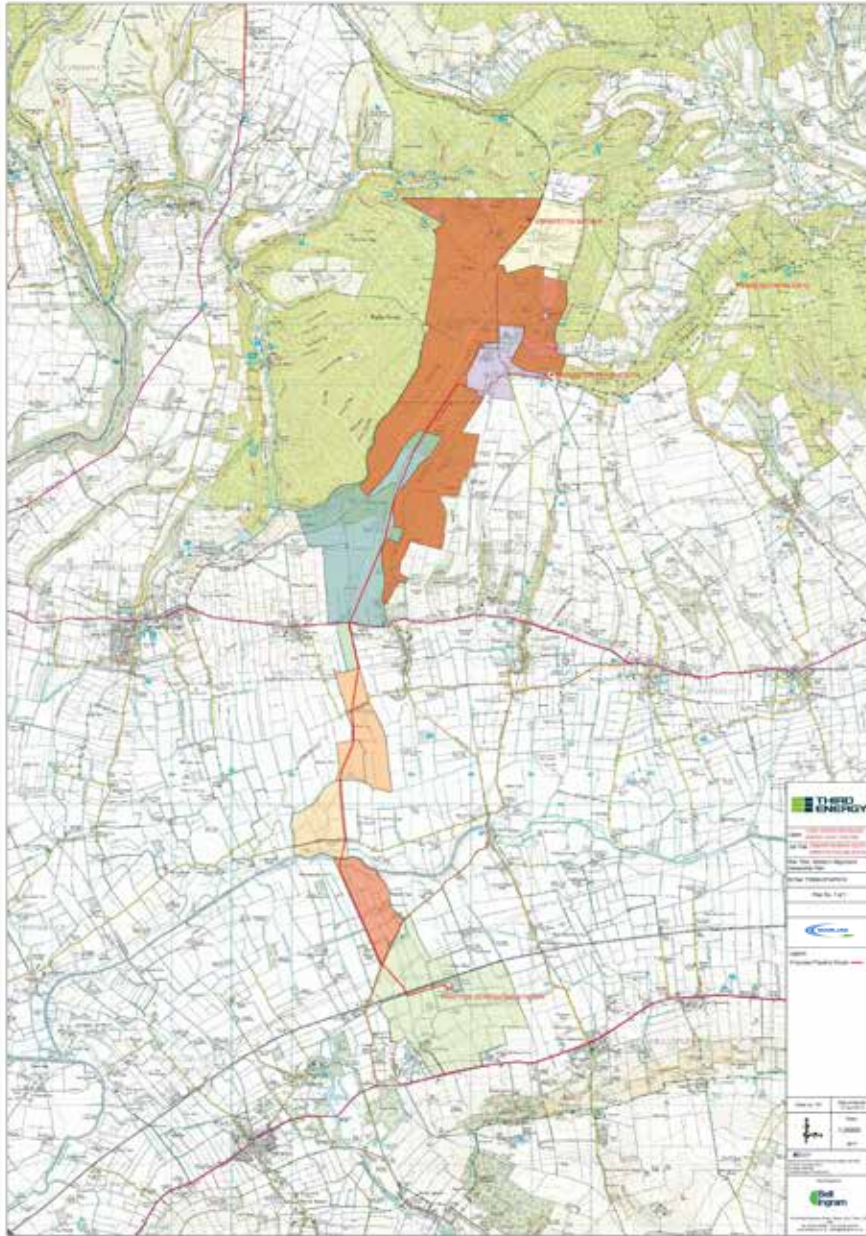
After construction the pipeline will be buried in accordance with regulations. Once construction has been completed, a 10m easement will be maintained during the operational lifetime of the proposed pipeline for maintenance purposes.

### Access

Access to the Eberston Moor South Well Site is from the A170 via Eberston Lane and Eberston Common Lane. No unauthorised vehicles associated within the Proposed Development will use the Dalby Forest Drive. Eberston Common Lane is an unclassified road with passing places. Approximately 100m north of Givendale Head Farm, the road becomes an unimproved public highway (gravel track). There is already an established access using this route to Eberston Moor South Well Site and the adjacent LTZ Lockton Compound.

Access to the pipeline corridor is from the local road network including: A170; B1415 Penniston Lane; Allerston Lane; Marishes Lane and B1258 Malton Road where the pipeline crosses these roads.

## PROPOSED ROUTE



## WHAT YOU CAN EXPECT TO SEE

The 12" diameter steel pipeline 13.9km in length will be laid from the Eberston Moor South Well Site to KGS using an open trench for the majority of the length. However, where crossing railways, the River Derwent and roads, auger boring will be used to limit surface disturbance.

Normally, the construction working width for the pipeline will be 30m across although in some sensitive locations, this may need to be reduced. The working corridor will be required to allow for the laying down of pipe work, the movement of construction vehicles and the use of machinery required for the construction of the pipelines. Lengths of pipe will be transported to the working width from the laydown area and strung out along the line parallel to the proposed trench. The pipes will then be welded together to make a continuous pipeline.

### Topsoil stripping

Great emphasis will be placed on creating the least possible disturbance to the land by limiting any potential adverse effects of the construction process and to ease the process of reinstating the land. Topsoil and subsoil will be stripped and left in individual rows along the edge of the right of way to be redistributed upon completion of the right of way section.

### Trenching

A trench will be excavated to a depth sufficient to provide in excess of one metre cover of the pipe.

Crossings of existing high pressure pipelines, HV electricity or other third party services will be clearly identified by the owner of the service and hand excavated within the last meter on both sides. The work to enable the pipeline to cross the services will only be undertaken in line with the requirements of the asset owners.

### Lowering in of the pipe and backfilling

The pipeline will be lowered into the trench using side boom tractors or equivalent plant. Extreme care will be taken to avoid damaging the pipe coating. The trench will then be backfilled with the excavated subsoil, which will be graded to avoid damage to the pipeline coating. The subsoil will be carefully compacted around and over the pipe up to the top of the trench.

The final cover of topsoil will be crowned over the pipeline to account for future settlement. This is not a major issue in arable land as the topsoil is usually ploughed back into the rest of the field. The expected duration for fabrication and installation will be approximately three months, but the various sections of pipeline will be completed as quickly as possible and long lengths of ditch will not be left lying open.



## CONSTRUCTION

Construction of the proposed scheme will include the following activities:

Site Preparation (including excavating and grading) Prior to the onset of the main construction phase, an initial programme of work will be required to make the site ready. This will include:

- Construction of temporary compounds and lay down areas
- Temporary site fencing
- Temporary surface water management
- Ground modelling works
- Workshop facilities for the construction equipment

### Construction Phase

Once the site has been prepared, the main construction phase can begin. This will include:

- Trench excavation and construction
- Installation of below and above ground services and pipelines
- Construction of the main building envelopes on Eberston Moor South Well Site.



### Landscaping

Where needed, landscaping works will involve some ground modelling works. The works will include soil preparation, tree and vegetation planting and seeding. The ground modelling works will be undertaken concurrently with the site preparation and below ground works outlined above. The sequence of works will be:

- Clear felling of woodland and clearance of other vegetation;
- Stripping and stockpiling of existing topsoil;
- Placement of materials recovered from excavations for foundations, roadways and pipeline and services trenches;
- Placement of topsoil; and
- Tree and vegetation planting and seeding.

### Hours of work

NYCC and NYMNPA may wish to stipulate the hours of work prior to the commencement of the construction works. It is anticipated that these may for example be 07:00 to 18:00 Monday to Friday and 07:00 to 13.00 on Saturdays. All work outside these hours will be subject to prior agreement, and/or reasonable notice, by NYCC and NYMNPA which may impose certain restrictions. Night time working beyond the drilling operations will be restricted to exceptional circumstance.



## REINSTATEMENT AND OPERATION

Reinstatement of the surface of the land is normally carried out within the same season as construction. Walls and fences will be reinstated and hedges replanted between protective fences. Permanent pipeline markers and cathodic protection test posts will be installed at agreed locations. Finally, any temporary fencing along the working width will be removed. In conservation areas, reinstatement may be modified to suit special conditions found there.

### Operation

Once the pipeline has been constructed and tested, it will be handed over to the competent staff at the Knpton Generating Station for operation and maintenance. The staff will monitor the performance of the pipeline and will be able to respond to any issues and carry out routine inspection and maintenance on a regular basis.

### Decommissioning and Restoration

At the end of the life of Proposed Development, all the wells will be abandoned and Eberston Moor South Well Site will be restored unless planning permission for future use of the site is secured. The general aim of restoration would be to return the site to forestry in a condition as close as practicable to its original state or to a combination of forestry and amenity uses.

The finished contours on Eberston Moor South Well Site will be close to the original site contours. Any hedgerow or trees removed during construction or operation will be replanted with good nursery stock plants guarded with stock and rabbit proof fences during the first year.

The pipeline between Eberston Moor South Well Site and KGS will be left in situ with the ends capped to avoid further disturbance of the ground. There will be no decommissioning or restoration required at KGS.



## RESPECTING THE ENVIRONMENT

All developments in the North York Moors National Park are strictly controlled by the North York Moors National Park Authority. In addition, the field development plan has to be approved by the Department for Energy and Climate Change. The Environment Agency also plays an important role in providing advice and acceptance to both the North York Moors National Park Authority and the Department for Energy and Climate Change.

An Environmental Statement and an Environmental Risk Assessment have to be conducted prior to the planning submission which requires individual studies on:

- Ecology;
- Landscape and Visual Amenity;
- Air Quality;
- Noise;
- Transport and Traffic;
- Flood Risk, Hydrology and Drainage;
- Archaeology and Cultural Heritage;
- Economics; and
- Ground Conditions and Contamination.

It will also highlight where our proposals will provide potential benefits to the area.

In addition to all of the above, one of the most important parts of the planning process is you – the public. We have invited you here today to listen to your views and help us shape the project. It is your Park, and we want to be good neighbours.

## FREQUENTLY ASKED QUESTIONS:

**Q. Why was this proposed pipeline route selected?**

A. The route proposed is the shortest route between the Ebberston Moor South well site and the Knapton Generating Station, taking into account the various environmental, physical, technical and practical constraints.

**Q. Moorland Energy has obtained planning permission for gas production at Ebberston South and a pipeline to a new processing facility near Thornton-le-Dale. How will this proposal affect this scheme?**

A. The two companies have been in discussions and propose to jointly construct the single pipeline connecting the Ebberston Moor South Field to the Knapton Generating Station. This means that the proposed Thornton le Dale processing plant will not now be needed. We believe the new proposals fully comply with local planning policies since they make use of existing infrastructure.

**Q. How has Third Energy & Moorland considered the possible environmental impacts?**

A. Third Energy has commissioned the production of an Environmental Statement which includes detailed assessments on ecology, noise, transport, landscape and visual impact, archaeology and cultural heritage, flood risk, hydrology and drainage, ground conditions and contamination and economics.

**Q. Does Third Energy & Moorland require planning permission to build the pipeline?**

A. Third Energy is required to secure planning permission from the North York Moors National Park Authority and North Yorkshire County Council under the Town and Country Planning Act 1990.

**Q. When does Third Energy & Moorland expect to be ready to submit a planning application?**

A. Third Energy intends to submit a planning application in August 2014 subject to this public consultation and responses. The application will be accompanied by an Environmental Statement which describes the proposed development in detail and outlines the likely environmental, social and economic impact upon the surrounding area.

**Q. How will Third Energy & Moorland manage vehicle movements?**

A. Third Energy will implement a traffic management plan during all phases of the development and subsequent operations. This will require all vehicles associated with the proposals to follow specified routes. The plan will be developed in conjunction with advice from the Planning Authorities.

**Q. What noise will be generated from this development?**

A. Noise levels at the nearest sensitive receptors are predicted to be very low so that the impact upon visitors and users of the National Park as well as residents will be negligible and well within approved limits. This will be covered in the Environmental Statement.

**Q. What noise will be generated from this development?**

A. Noise levels at the nearest sensitive receptors are predicted to be very low so that the impact upon visitors and users of the National Park as well as residents will be negligible and well within approved limits. This will be covered in the Environmental Statement.

**Q. Is this anything to do with fracking?**

A. No. This proposal concerns the development of the conventional Ebberston Moor South Field and the transportation of gas back to the Knapton Generating Station via an underground pipeline.

Thank you for attending today's exhibition.  
We hope you found it informative and helpful.

If you think of anything later on that you wish  
you had asked us, please email us at:

[info@third-energy.com](mailto:info@third-energy.com)

or write to us at:

General Manager,  
Knapton Generating Station,  
East Knapton,  
N Yorks  
YO17 8JF

